



FOR LEASE

1335 S. LA BREA AVE

LOS ANGELES, CA 90019

STEVE RAVAN

Tel - 323-782-1262 | steveravan@southparkgroup.com
DRE License #01747222

MANE AJARYAN

Tel - 818-523-4997 | mane@southparkgroup.com
DRE License #02099173

SASHA SOOFER

Tel - 424-888-3695 | sasha@southparkgroup.com
DRE License #02221169

Property Overview

FOR LEASE

**1335 S. LA BREA AVENUE
LOS ANGELES, CA 90029**

3,200 SF warehouse / office / showroom space along the highly trafficked La Brea corridor. High bow-truss ceilings, roll-up gates, flexible layout, and strong street presence make this an ideal fit for creative, production, light industrial, or auto-oriented users. Centrally located with easy access to Mid-Wilshire, Beverly Grove, Hollywood, and West Hollywood—directly across from Target, Sprouts, and Starbucks. Approx. 5–6 on-site parking spaces, plus a rare opportunity to include a spray booth on the lot.

USE

WAREHOUSE / OFFICE

SIZE

± 3,200 SF



RENT

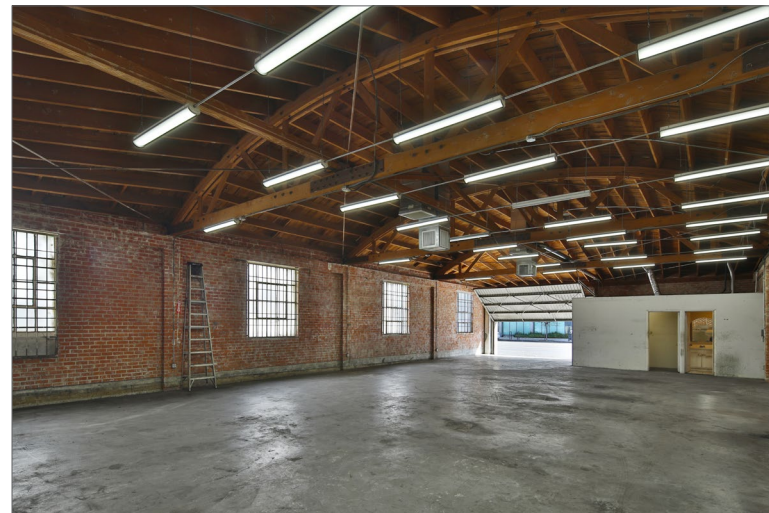
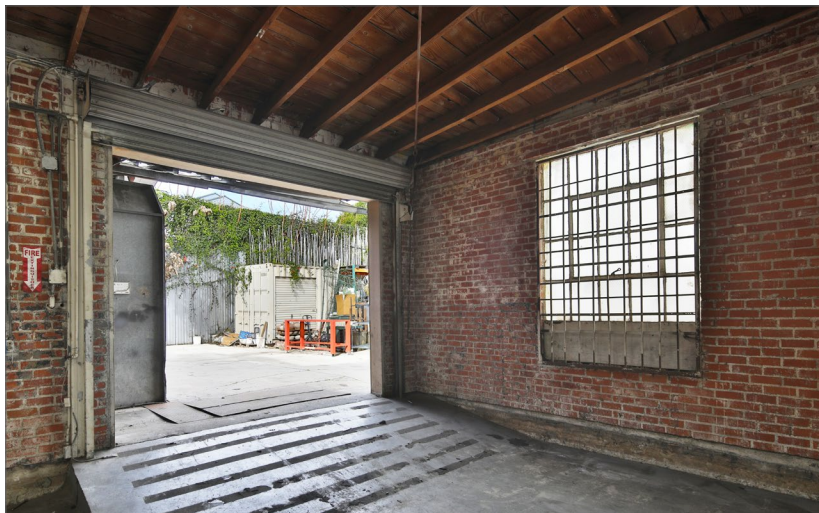
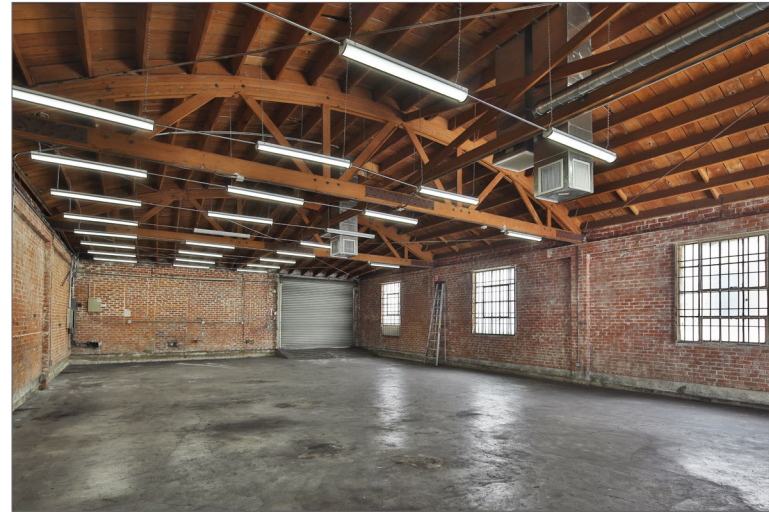
\$3.65/SF MODIFIED GROSS

PARKING

5 SPACES ON SITE



Interior Photos





Map Overview



PACE

DAVID
KORDANSKY
GALLERY

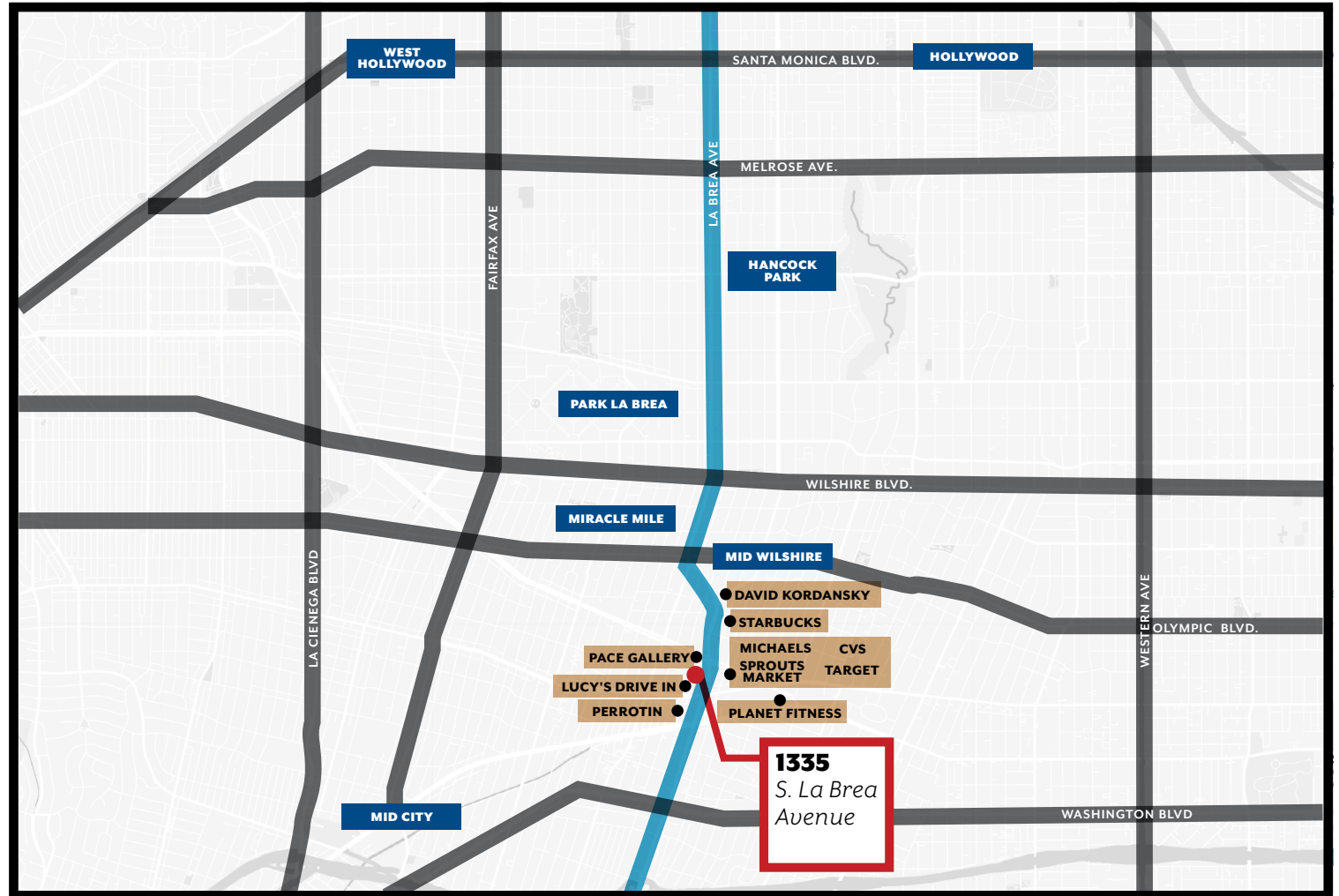
Michaels



PERROTIN



SPROUTS
FARMERS MARKET



Contact Us



STEVE RAVAN

Tel - 323-782-1262

steveravan@southparkgroup.com

DRE License #01747222

MANE AJARYAN

Tel - 818-523-4997

mane@southparkgroup.com

DRE License #02099173

SASHA SOOFER

Tel - 424-888-3695

sasha@southparkgroup.com

DRE License #02221169