

# INDIO PLAZA | NEC HIGHWAY 111 & MONROE STREET | INDIO, CA



## ±4,000 SF TO ±18,089 SF AVAILABLE

- Join Food 4 Less, dd's Discounts, US Bank, Denny's, and many others at this busy neighborhood center in the heart of Indio.
- Junior Anchor Space divisible to 10,778 SF.
- Located at the high-traffic intersection at Highway 111 and Monroe Street.
- Monument Signage on Highway 111 and Monroe Street.
- 78.2% Hispanic population in the trade area

DEMOGRAPHICS	1MI	3MI	5MI
Population	23,750	109,476	184,473
Average Daytime Population	13,879	54,011	98,940
Average Household Income	\$69,947	\$107,125	\$117,761

Median Household net worth of \$1.4 million within a 5 mile radius

# INDIO PLAZA | NEC HIGHWAY 111 & MONROE STREET | INDIO, CA

## AVAILABLE RETAIL SPACE



UNIT #	TENANT	SIZE
118	US Bank (NAP)	7,200
120	Dennys	3,750
124	Food 4 Less	58,000
126A	Furniture	6,000
126B	Nailworks	1,600
128	Pho of the Desert	4,000
132	Aladino's	±3,000
136	Available	±4,000
140	Sally's Beauty	12,000
150	Available 6/1/26 - Divisible	±18,089
152	Available	±4,033
154	DD's Discounts	23,410
158	Boost Mobile (Coming Soon)	1,300
162	Subway	1,200
166	CigZone	1,500
170	Flame Broiler	1,250
180 & 182	Don Roberto's	2,050
184	Donut	1,000



**LEE & ASSOCIATES**  
COMMERCIAL REAL ESTATE SERVICES

73000 Highway 111, Suite 200  
Palm Desert, CA 92260  
[www.LeePalmDesert.com](http://www.LeePalmDesert.com)

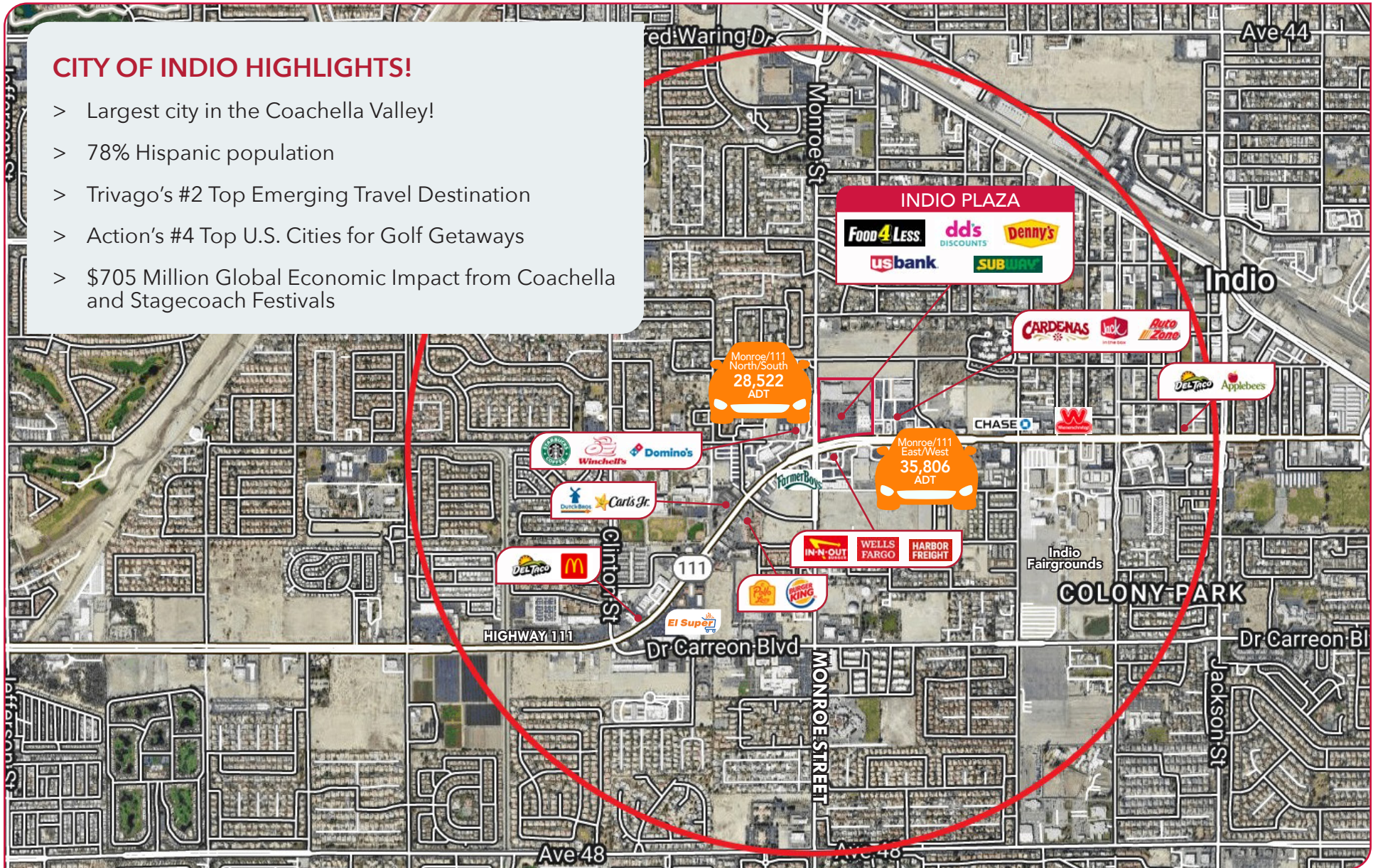
**Maggie Montez**  
[mmontez@leedesert.com](mailto:mmontez@leedesert.com)  
760.346.2520  
LIC #01070683

**Shawna Strange**  
[sstrange@leedesert.com](mailto:sstrange@leedesert.com)  
760.346.2533  
LIC #01718495

# INDIO PLAZA | NEC HIGHWAY 111 & MONROE STREET | INDIO, CA

## CITY OF INDIO HIGHLIGHTS!

- > Largest city in the Coachella Valley!
- > 78% Hispanic population
- > Trivago's #2 Top Emerging Travel Destination
- > Action's #4 Top U.S. Cities for Golf Getaways
- > \$705 Million Global Economic Impact from Coachella and Stagecoach Festivals



**LEE & ASSOCIATES**  
COMMERCIAL REAL ESTATE SERVICES

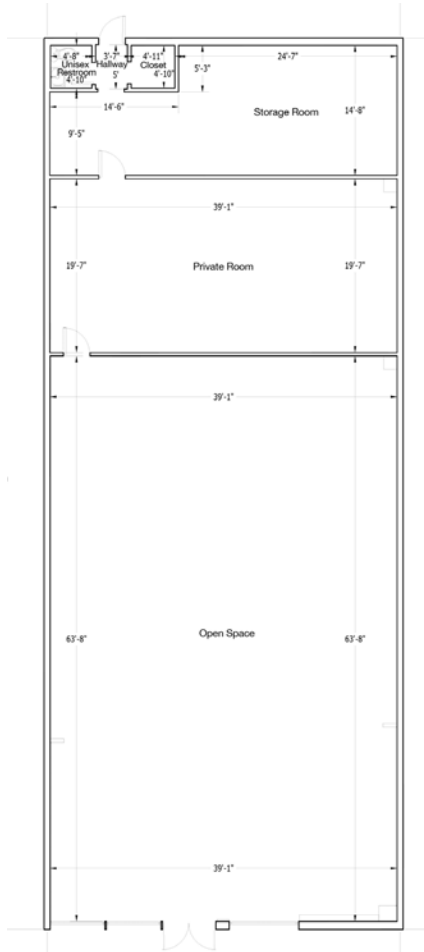
73000 Highway 111, Suite 200  
Palm Desert, CA 92260  
[www.LeePalmDesert.com](http://www.LeePalmDesert.com)

**Maggie Montez**  
[mmontez@leedesert.com](mailto:mmontez@leedesert.com)  
760.346.2520  
LIC #01070683

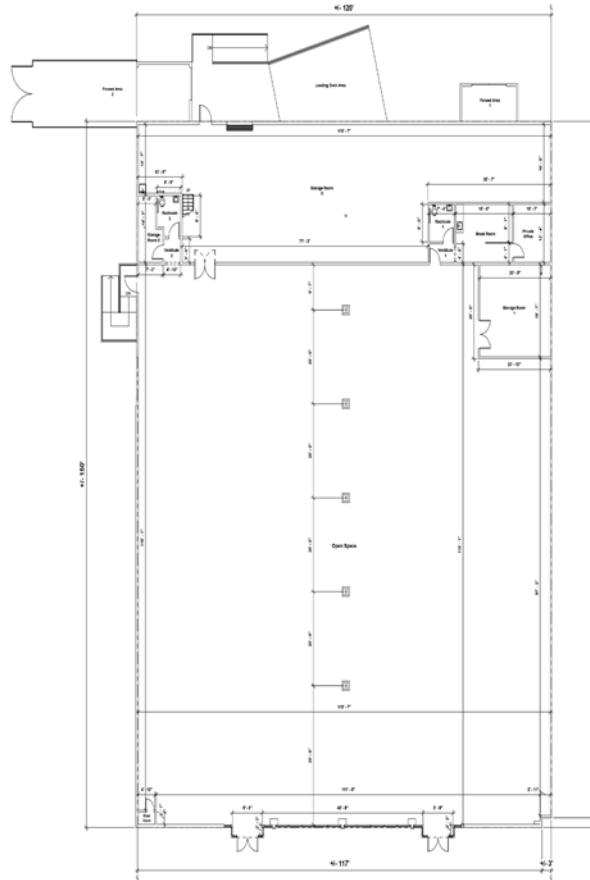
**Shawna Strange**  
[sstrange@leedesert.com](mailto:sstrange@leedesert.com)  
760.346.2533  
LIC #01718495

FLOOR PLANS

UNIT 136 4,000 SF



UNIT 150 18,089 SF



UNIT 152 4,033 SF

