



CENTERPOINT

MISSION VALLEY



3110 & 3160
CAMINO DEL RIO SOUTH
SAN DIEGO, CA 92108



BROKER BONUS

\$1.00 Per Square Foot
for a 3-year lease
or longer



CENTERPOINT

MISSION VALLEY

AVAILABILITY

3110 CAMINO DEL RIO SOUTH

SUITE	SF	AVAILABLE	LEASE RATE	NOTES
A-219	841	Now	\$2.35 + E	Reception, 3 Offices, and Break Room

3160 CAMINO DEL RIO SOUTH

SUITE	SF	AVAILABLE	LEASE RATE	NOTES
B-118	1,384	Now	\$2.35 + E	Reception, 2 Offices, Conference Room, Break Room, and Open Area
B-312	1,160	Now	\$2.35 + E	3 Offices, Conference Room, & Break Room

Virtual Tour



3110 CAMINO DEL RIO SOUTH



3160 CAMINO DEL RIO SOUTH



PROPERTY HIGHLIGHTS



Lease Rate

\$2.35 /SF + Electric



Spec Suites

Available



Parking Ratio

Excellent at 3.5/1,000



Elevator-Served

Greater accessibility and convenience



Unparalleled Freeway Access

Near five major arterial freeways



Renovated Common Areas

Fosters a modern and inviting atmosphere

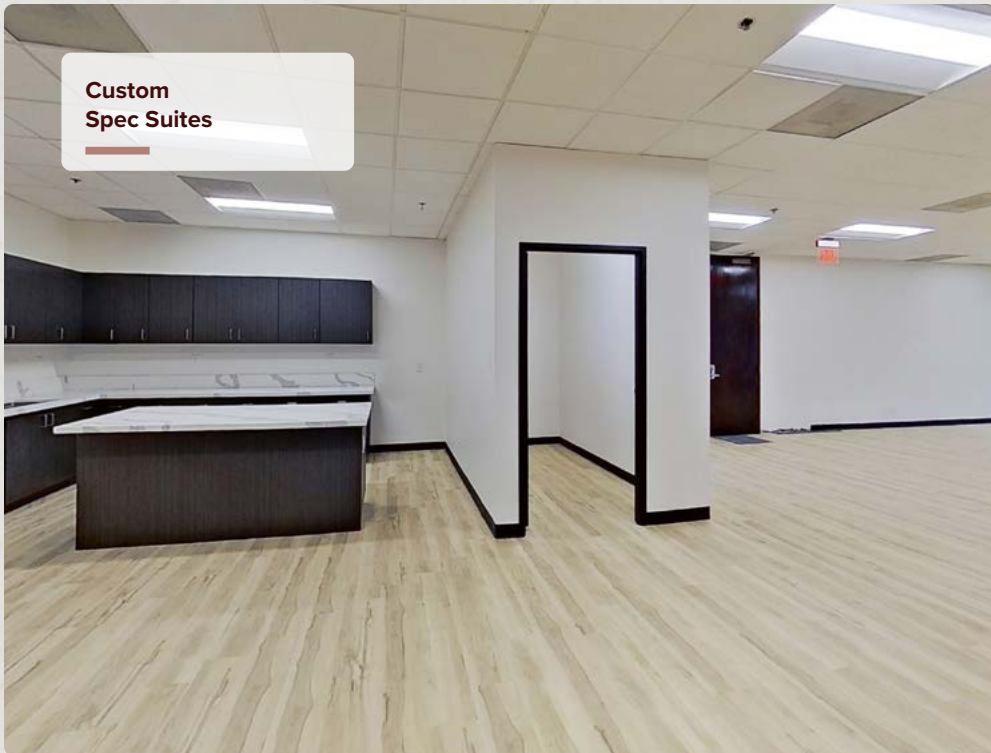
**Renovated
Common Areas**



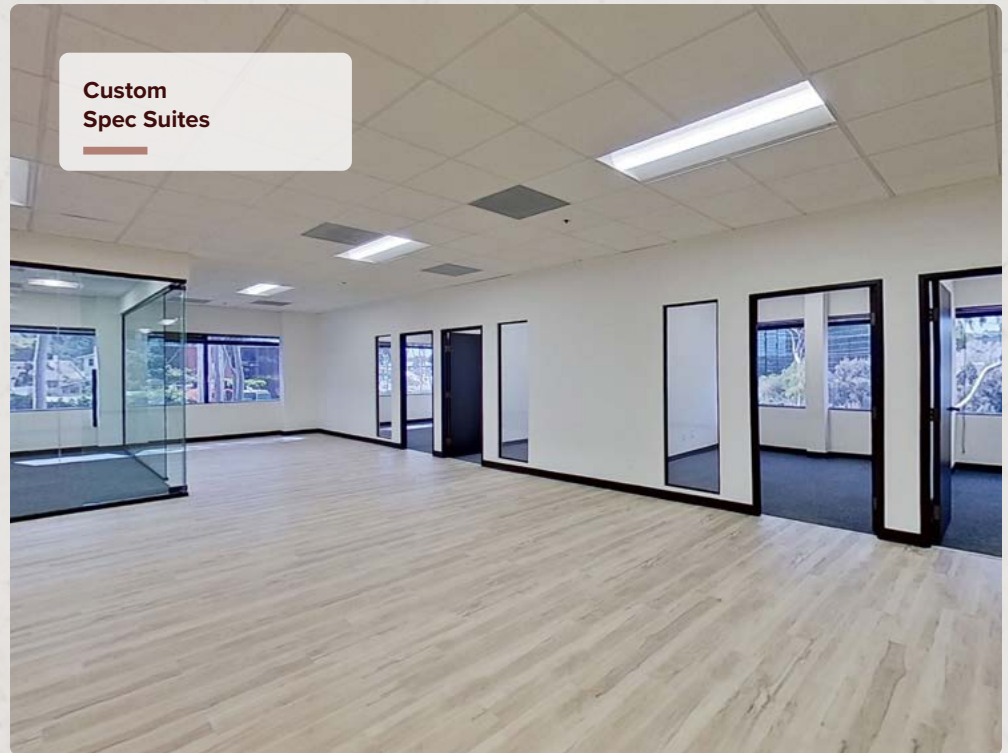
**Elevator-Served
Building**



**Custom
Spec Suites**

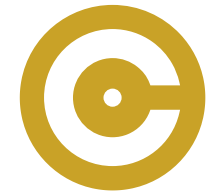


**Custom
Spec Suites**

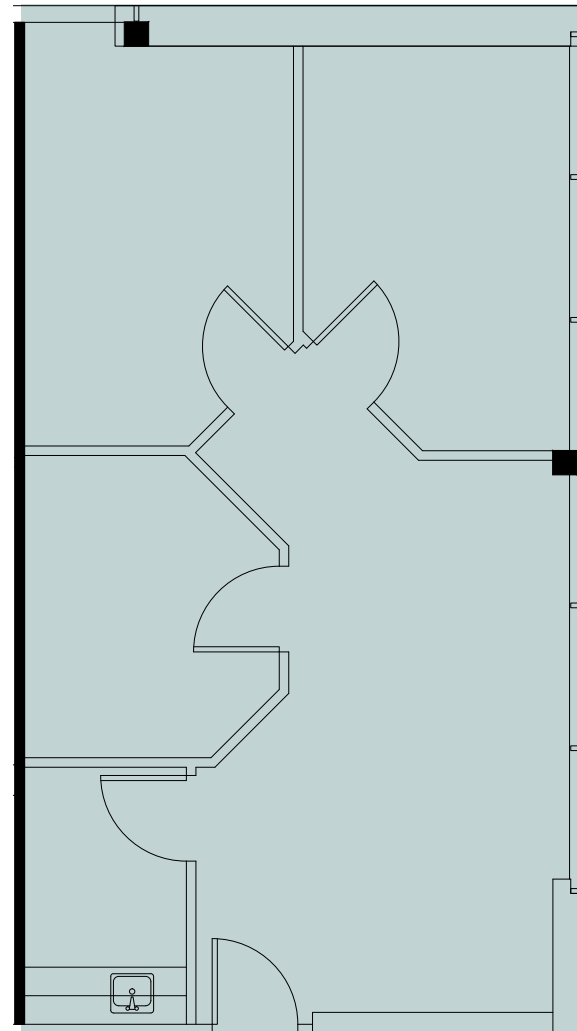


3110 CAMINO DEL RIO SOUTH

SECOND FLOOR



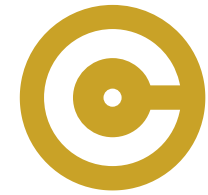
SUITE	A-219
SIZE	841 SF
AVAILABLE	NOW
NOTES	RECEPTION, 3 OFFICES, AND BREAK ROOM



SUITE A-219

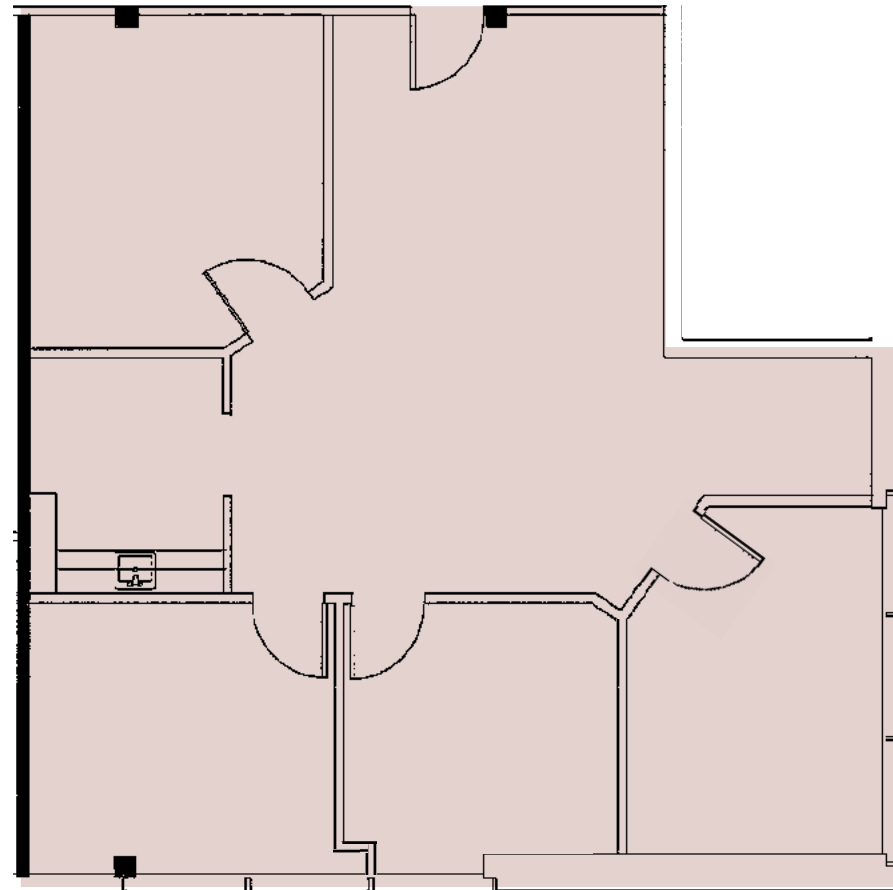
3160 CAMINO DEL RIO SOUTH

FIRST FLOOR



SUITE	B-118
SIZE	1,384 SF
AVAILABLE	NOW

NOTES
RECEPTION, 2 OFFICES,
CONFERENCE ROOM,
BREAK ROOM, &
OPEN AREA



Click To
Tour Suite

SUITE B-118

SUITE B-312

SIZE 1,160 SF

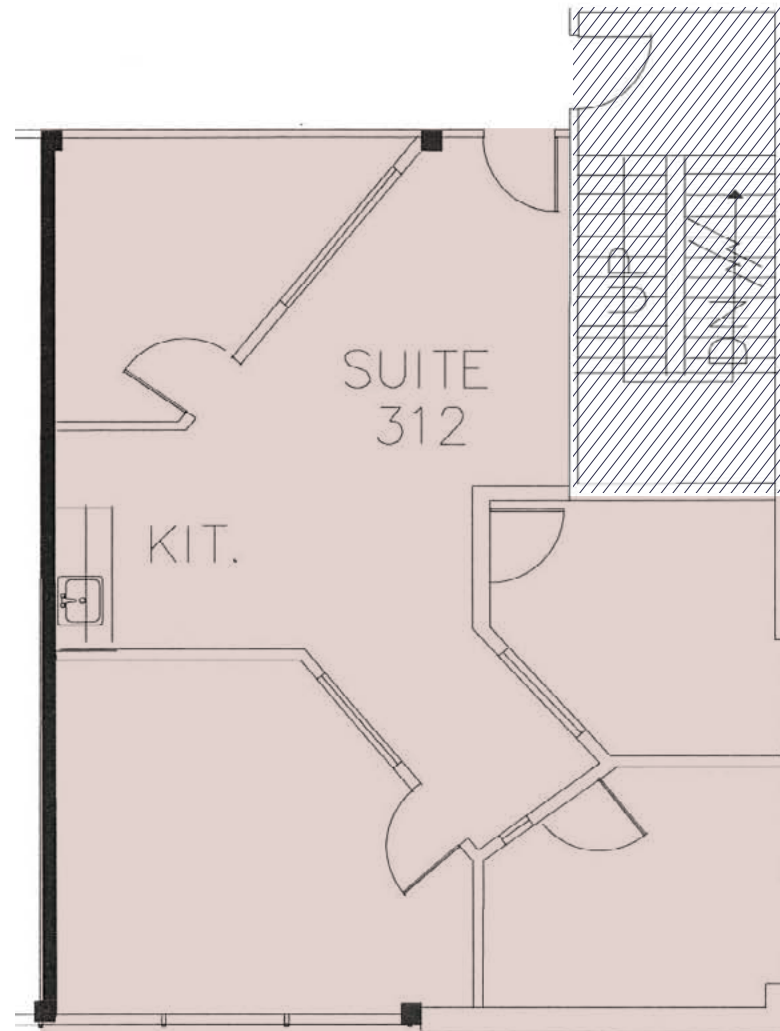
AVAILABLE NOW

NOTES 3 OFFICES,
CONFERENCE ROOM,
AND BREAK ROOM



3160 CAMINO DEL RIO SOUTH

THIRD FLOOR



SUITE B-312

MISSION VALLEY
MALL
1.6 MILES

RIO VISTA
TROLLEY
STATION
1.7 MILES



I-15

2 Minutes

I-8

4 Minutes

SR-163

4 Minutes

I-805

7 Minutes

Mission Valley Mall

5 Minutes

Fashion Valley Mall

8 Minutes

San Diego Intl Airport

10 Minutes

3110
CDRS



3160
CDRS

CAMINO DEL RIO SOUTH

COMMUTER HIGHLIGHTS

Over 600

MULTIFAMILY UNITS UNDER CONSTRUCTION

At the geographic midpoint of San Diego, Mission Valley is experiencing a coming of age. Under construction throughout its 2,400 acres are an array of residential, retail, and commercial, projects — making the area a walkable, bikeable, riverside utopia.

AREA DEMOGRAPHICS

240,923

Population

\$108,533

Average Household Income

34

Median Age

60%

Percent of Population with Degrees

**Values for 2023*

MISSION VALLEY LOCATION HIGHLIGHTS



Boasting unparalleled access to five major freeway routes

Mission Valley: San Diego's Thriving **Business Epicenter**

Experience the energy of a central business district with the convenience of ample parking and world-class amenities in Mission Valley. Seamlessly connected to major freeways, Mission Valley provides a direct link to a diverse talent pool from surrounding communities. With a flourishing atmosphere and unparalleled accessibility, Mission Valley is San Diego's premier business destination.



**3110 & 3160
CAMINO DEL RIO SOUTH
SAN DIEGO, CA 92108**



CENTERPOINT

MISSION VALLEY

OFFICE SUITES
FOR LEASE

CONTACT

DEREK APPLBAUM

Senior Vice President

+1 619 851 2628

derek.applbaum@colliers.com

CA RE Lic. #01280412

