



Ground Floor

Latham House, 33-34 Paradise Street, Birmingham, B1 2AJ

**Superb ground floor
commercial retail, office,
Class E accommodation**

3,731 sq ft
(346.62 sq m)

- 3,731 sq ft (346.62 sq m)
- Parking
- Cycle Rack
- Upper floor offices also available

Ground Floor, Latham House, 33-34 Paradise Street, Birmingham, B1 2AJ

Summary

Available Size	3,731 sq ft
Rent	£25 per sq ft
Rates Payable	£8.60 per sq ft
Service Charge	£7.50 per sq ft A service charge will be payable in respect of the landlord's services provided
Car Parking	£2,000 per space / annum
VAT	Applicable
Legal Fees	Each party to bear their own costs
Estate Charge	N/A
EPC Rating	C (73)

Description

Superb ground floor commercial retail/office/Class E accommodation.

Upper floor offices from 951 sq ft available in addition if required.

Location

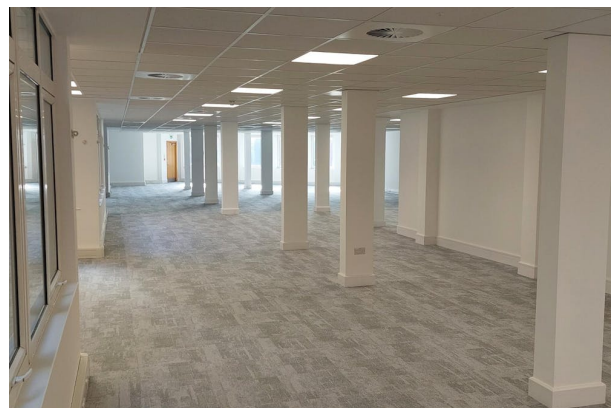
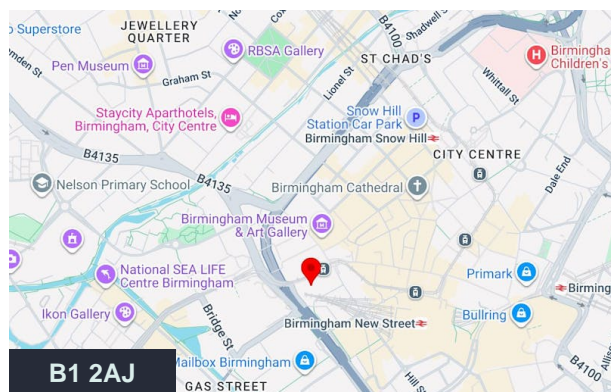
Latham House is superbly situated, being opposite both the brand new Paradise Office Development and Birmingham Town Hall.

Being situated in the city core, it is close to all of the main amenities and transport infrastructure. There is a tram stop opposite the property.

Accommodation

The accommodation comprises the following areas:

Name	sq ft	sq m	Availability
Ground - Ground Floor	3,731	346.62	Available
Total	3,731	346.62	



Viewing & Further Information



Charles Warrack

0121 561 7885 | 07977 512965

charles.warrack@fishergerman.co.uk