

# For Lease

## Key Location Retail Space Opportunity



### Location

3189 King George Blvd  
Redwood Square |  
Surrey

### McGladery Commercial

RE/MAX Commercial  
Advantage

### Contact

**Rachel McGladery**

604.290.8777

rachel@mcgladery.ca

**Joshua McGladery**

604.418.2690

jmcgladery@gmail.com

## Perfect Size, Perfect Price



## HIGHLIGHTS

- RETAIL - Right Size & Right Price
- Busy Strip Mall on King George Blvd
- Ample Parking for Customers
- Anchored by Rona and Anytime Fitness
- Nearby retailers: Cactus Club, Choices Market, Starbuck's, Save-On Foods & HomeSense



#500-889 West Pender St. Vancouver



# For Lease

**Redwood Square**  
South Surrey  
3189 King George Blvd



- Numerous new Housing Developments within walking distance

**Rachel McGladery\***  
rachel@mcgladery.ca  
\* Personal Real Estate Corporation  
604.290.8777

**Joshua McGladery**  
jmcgladery@gmail.com  
604.418.2690

RE/MAX Commercial Advantage



Disclaimer: Although the information contained within is from sources believed to be reliable, no warranty or representation is made as to its accuracy being subject to errors, omissions, conditions, prior lease, withdrawal or other changes without notice and same should not be relied upon without independent verification. RE/MAX Commercial Advantage

# For Lease

## Redwood Square

### South Surrey

#15 - 3189 King George Blvd



## DEMOGRAPHICS

	3 km Ring	5 km Ring	10 km Ring
<b>Population</b>	48,645	83,308	273,744
<b>Households</b>	20,012	36,629	94,389
<b>Household Income</b>	130,451	123,214	119,764

## AVAILABILITY

Unit #	Area (sq. ft.)	Base Rent (per sq.ft.)	Additional Rent (per sq.ft.)	Monthly Rent
15	1,100	\$45.00	\$16.20	\$5,592 + GST

\*First Year Introductory Rate

Rachel McGladery\*  
rachel@mcgladery.ca  
\* Personal Real Estate Corporation  
604.290.8777

Joshua McGladery  
joshua@mcgladery.c  
604.418.2690

RE/MAX Commercial Advantage



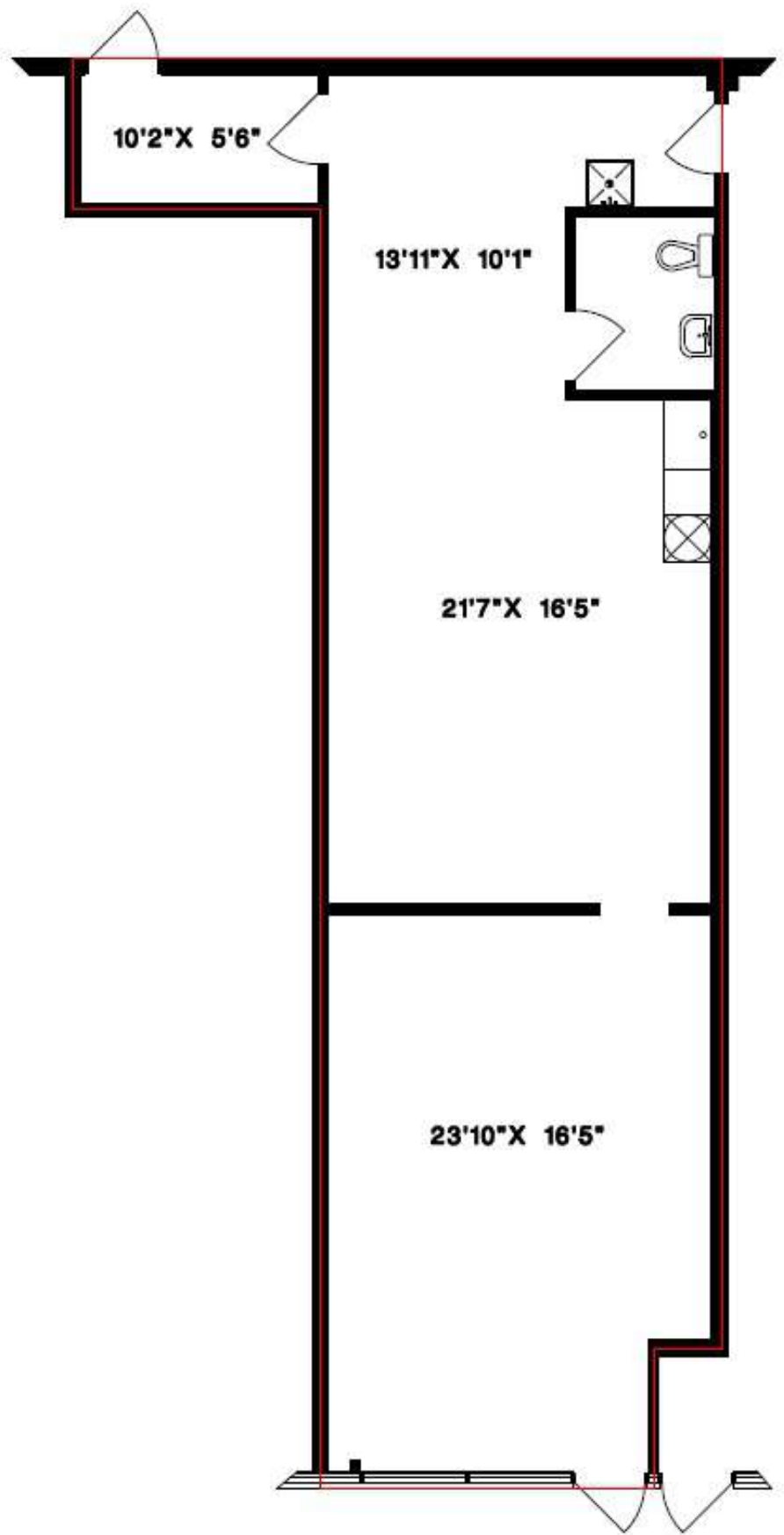
Disclaimer: Although the information contained within is from sources believed to be reliable, no warranty or representation is made as to its accuracy being subject to errors, omissions, conditions, prior lease, withdrawal or other changes without notice and same should not be relied upon without independent verification. RE/MAX Commercial Advantage

# For Lease

**Redwood Square**  
South Surrey  
#15 - 3189 King George Blvd

## UNIT PLAN

---



**Rachel McGladery\***  
rachel@mcgladery.ca  
\* Personal Real Estate Corporation  
604.290.8777

**Joshua McGladery**  
jmcgladery@gmail.com  
604.418.2690

RE/MAX Commercial Advantage **RE/MAX**

Disclaimer: Although the information contained within is from sources believed to be reliable, no warranty or representation is made as to its accuracy being subject to errors, omissions, conditions, prior lease, withdrawal or other changes without notice and same should not be relied upon without independent verification. RE/MAX Commercial Advantage