

# BANK STREET CENTRE



IN THE CENTER OF DOWNTOWN SUMMIT, NJ



## OFFICE OR NEWLY-DEMISED STOREFRONT RETAIL FOR LEASE

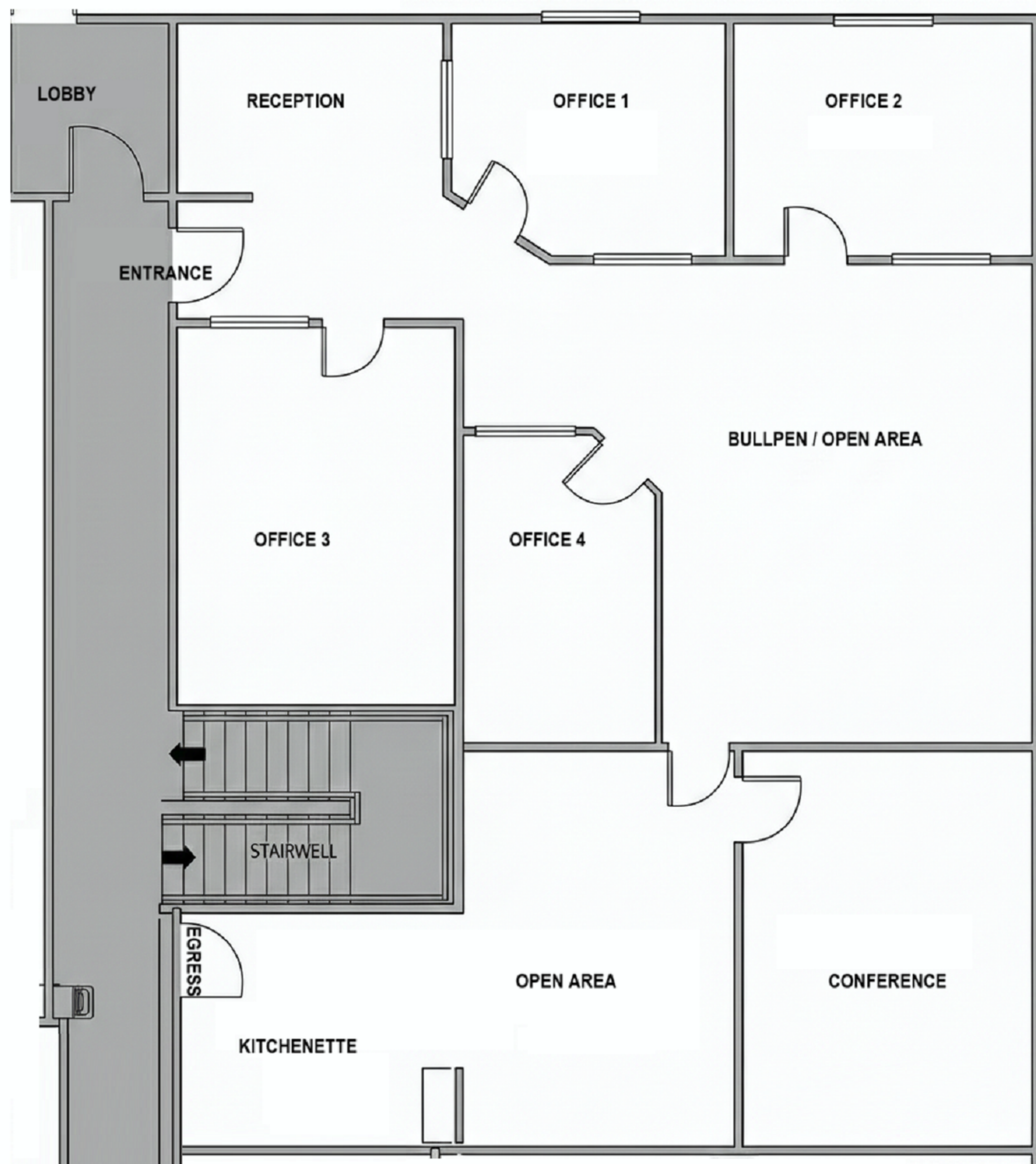
**SUITE 100 aprox. 1700sf**

- **Class A Executive Office Suite, or Storefront Retail with Display Window and Street-side Private Entry**
- **Conference/Storage Room**
- **Kitchenette**
- **Quality Professional Building Overlooking Bank Street**
- **On-Site Building Management**
- **One Block to NJ Transit Station to NYC**
- **Three Blocks to Post Office, One Block to UPS and FedEx Stores**
- **Four Blocks to Library and YMCA**
- **All the Amenities of Unparalleled Downtown Summit at your Fingertips**

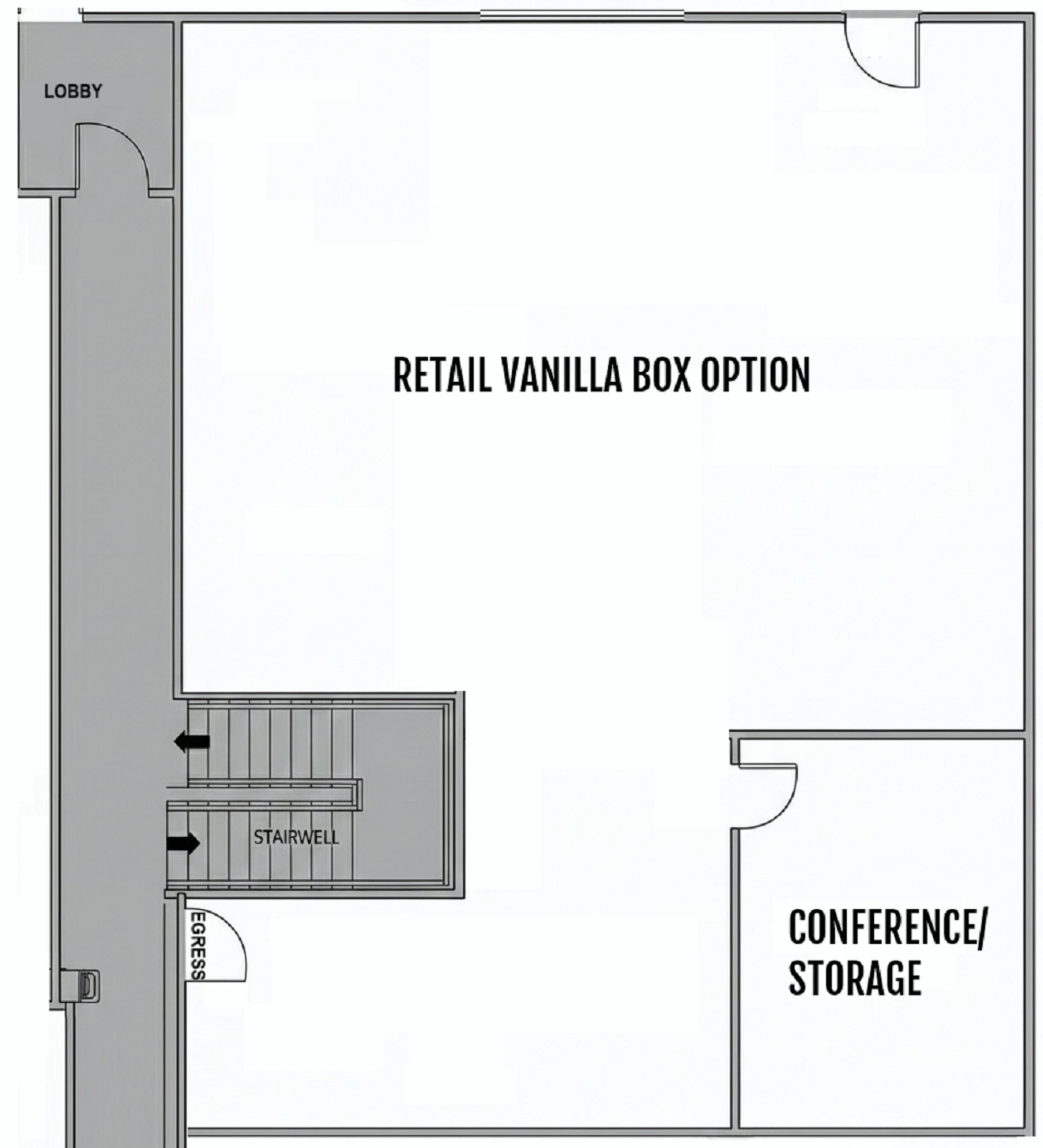
**CONTACT PARAS AND PARAS FOR MORE INFORMATION AND SHOWINGS  
BRANDON SNOOK - 785.218.5143 - [bsnook@parasandparas.com](mailto:bsnook@parasandparas.com)**

**18-22 BANK STREET**

**BANK STREET**



**BANK STREET**



- **Current office space accommodates 8-15 people**
- **Ideal for financial, consulting, law, client-facing firms**
- **New retail space can be delivered as vanilla box, with ample floor space in front, and storage / office / kitchenette space in back**
- **Ideal for boutique retail, wellness, counseling**

**CONTACT PARAS AND PARAS  
FOR MORE INFORMATION AND SHOWINGS**



**BRANDON SNOOK**  
Realtor / Property Manager  
785-218-5143  
bsnook@parasandparas.com  
25 DeForest Ave, Summit, NJ 07901

**PARAS AND PARAS**  
Brokerage - Property Management - Appraisals - Expert Advice



**18-22 BANK STREET**