



FOR LEASE

Office Space on Indiantown Rd

675 W Indiantown Rd

Jupiter, FL 33458

PROPERTY OVERVIEW

Recently renovated professional office building located directly on highly trafficked Indiantown Road in Jupiter, Florida, with exposure to approximately 40,000 vehicles per day and convenient access to I-95, Florida's Turnpike, area beaches, restaurants, and retail amenities. The property features updated landscaping, fresh exterior paint, new impact windows and doors, covered reserved parking, abundant natural light throughout each suite, and second-floor balcony access. Available suites include flexible office layouts ranging from $\pm 1,200$ SF to $\pm 3,300$ SF, ideal for professional, executive, medical-adjacent, or general office users.

OFFERING SUMMARY

Available Size:	1,200 - 3,300 SF
Land Use:	Commercial
Zoning:	C2 - General Commercial
Traffic Count:	42,500 AADT

LEASE RATE

\$22 SF/yr (NNN)



TYLER RAYNES

VICE PRESIDENT/BROKER

Mobile 772.418.1946

tyler@slccommercial.com

772.220.4096 | slccommercial.com



SLC Commercial
Realty & Development

The information contained herein has been obtained from sources believed to be reliable, but no warranty or representation, expressed or implied, is made. All sizes and dimensions are approximate. Any prospective buyer should exercise prudence and verify independently all significant data and property information. This is NOT an offer of sub-agency or co-brokerage.

Property Details

EXECUTIVE SUITES ON INDIANTOWN RD

FOR LEASE

LEASE RATE

\$22 SF/YR (NNN)

Building Information

Building Size	15,833 SF
Year Built	1984
Condition	Excellent
Number Of Elevators	1
Number Of Floors	2

Location Information

Building Name	Office Space on Indiantown Rd
Street Address	675 W Indiantown Rd
City, State, Zip	Jupiter, FL 33458
County/Township	Palm Beach

Zoning / Land Use Details

Zoning	C2 - General Commercial
Land Use	Commercial
Permitted Use	See Below

Utilities & Amenities

Handicap Access	Yes
Number Of Elevators	1

Parking & Transportation

Parking Type	Surface
--------------	---------

Property Details

Property Type	Office
Property Subtype	Office Building
Traffic Count	42,500 AADT
Traffic Count Street	Indiantown Rd

Location Overview

Located along highly trafficked Indiantown Road in the heart of Jupiter, Florida, 975 W Indiantown Rd offers exceptional visibility and convenient access to I-95 and Florida's Turnpike. Surrounded by professional offices, medical users, retail centers, restaurants, and affluent residential communities, the property provides an ideal location for professional and executive office users seeking a prominent business address in one of Palm Beach County's most established commercial corridors.

Available Suites & Location Overview

EXECUTIVE SUITES ON INDIANTOWN RD

FOR LEASE



RECENTLY COMPLETED
RENOVATION AND
MODERNIZATION



COVERED RESERVED
PARKING
AVAILABLE



CONTINUOUS WINDOWS
PROVIDING AMPLE
NATURAL LIGHT TO
EACH SUITE



SECOND-FLOOR
BALCONY ACCESS

AVAILABLE SPACES



SUITE OPTION 1 – ±1,200 SF

Second-floor corner unit with open floor plan and plenty of natural light and balcony access.



SUITE OPTION 2 – ±1,200 SF

Second-floor space with open floor plan and balcony access.



SUITE OPTION 3 – ±3,300 SF

Second-floor unit with a large open work area, conference room, 4 offices, two bathrooms, large breakroom, and balcony access.



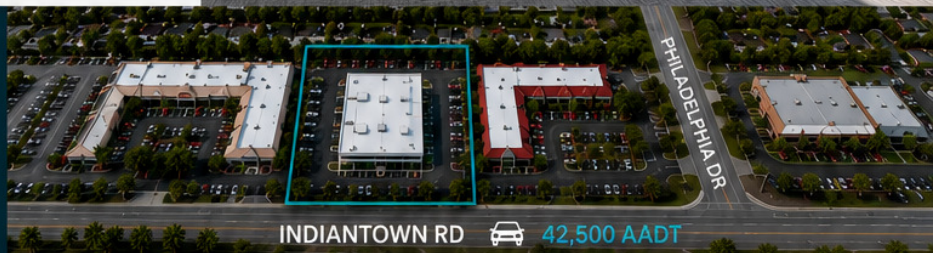
LOCATION



INDIANTOWN RD
42,500 AADT



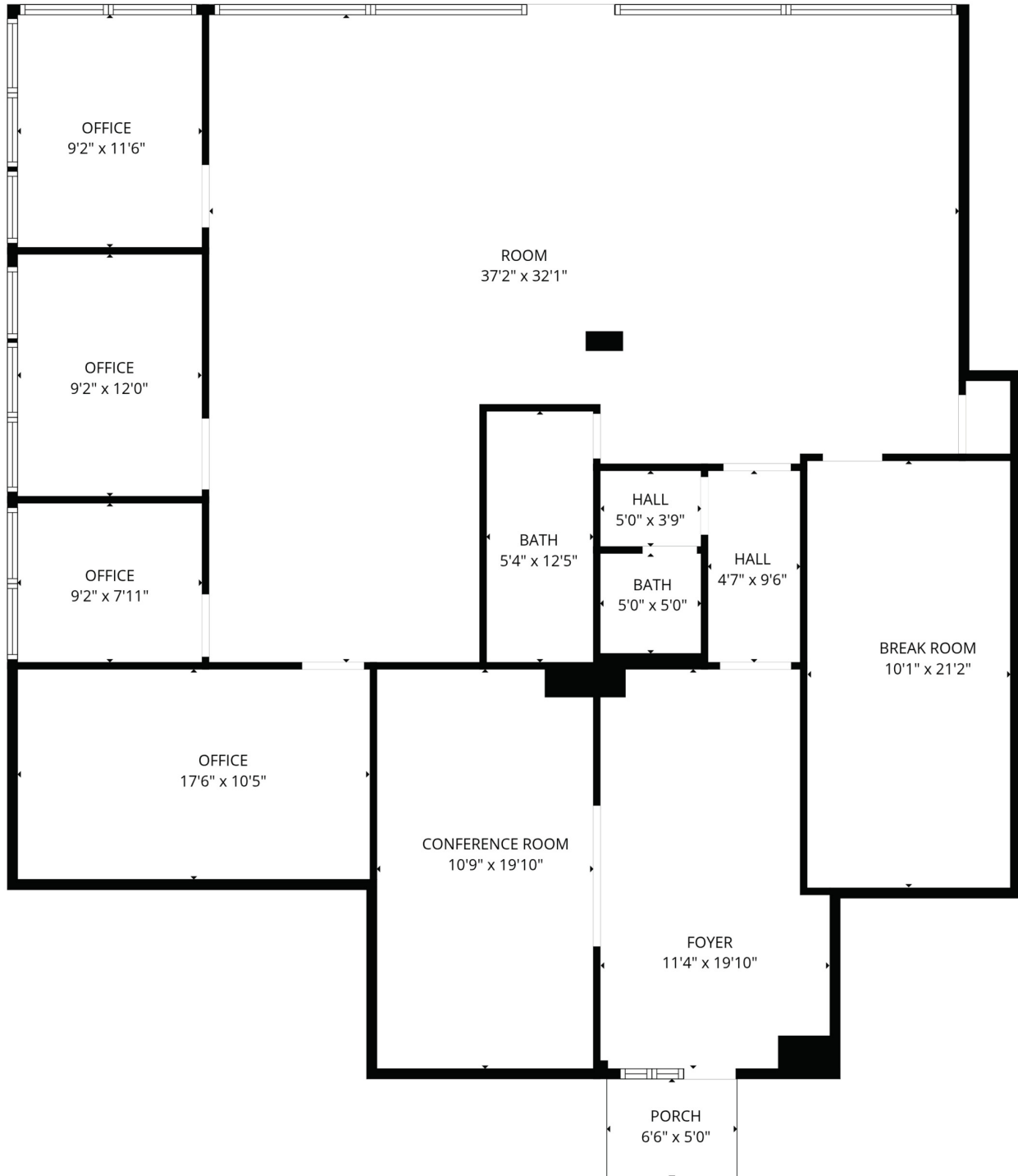
PHILADELPHIA DR
12,300 AADT



Suite 200-202 3,300SF

EXECUTIVE SUITES ON INDIANTOWN RD

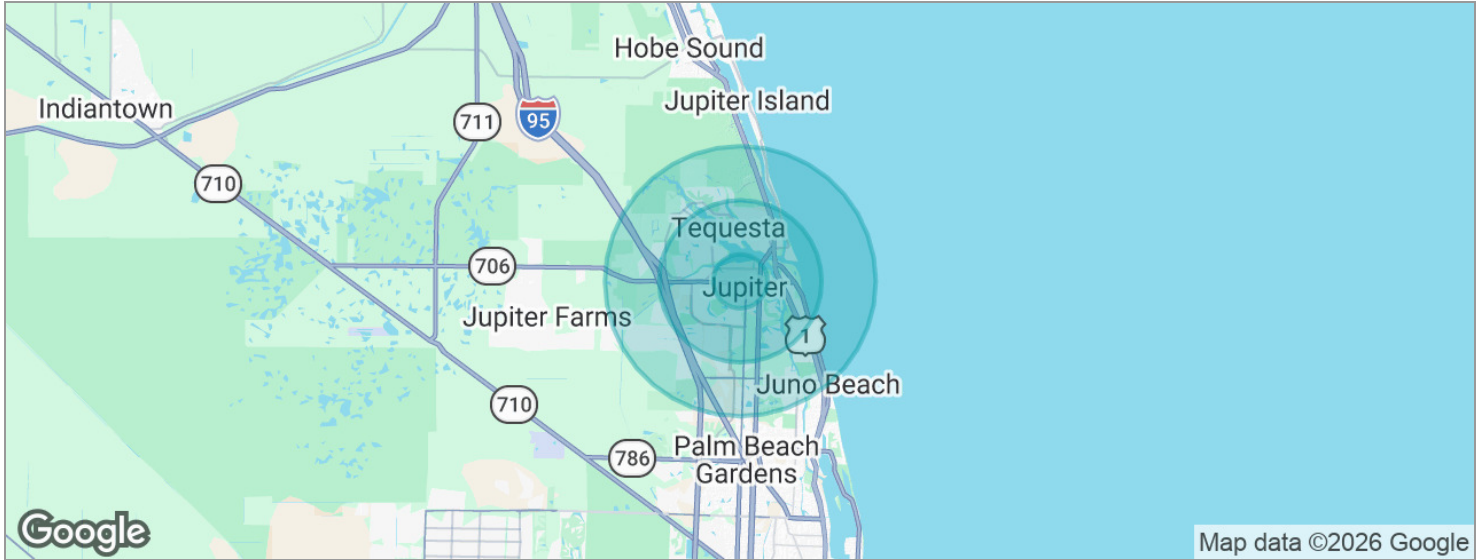
FOR LEASE



Demographics Map

EXECUTIVE SUITES ON INDIANTOWN RD

FOR LEASE



POPULATION	1 MILE	3 MILES	5 MILES
Total population	11,407	68,447	100,295
Median age	38.4	47.3	48.6
Median age (Male)	35.2	45.5	47.3
Median age (Female)	41.6	48.8	49.4
HOUSEHOLDS & INCOME	1 MILE	3 MILES	5 MILES
Total households	4,120	28,195	41,922
# of persons per HH	2.8	2.4	2.4
Average HH income	\$115,078	\$160,843	\$181,777
Average house value	\$554,945	\$760,912	\$774,376

* Demographic data derived from 2020 ACS - US Census

Disclaimer

EXECUTIVE SUITES ON INDIANTOWN RD

FOR LEASE

This presentation package has been prepared by the company representing the property for informational purposes only and does not purport to contain all information necessary to reach a purchase decision.

The information herein has been given by the Owner or other sources believed to be reliable, but it has not necessarily been independently verified by the Company representing the property and neither its accuracy nor its completeness is guaranteed.

This information is subject to errors, omissions, changes, prior sale or withdrawal without notice by the Company representing the property and does not constitute a recommendation, endorsement or advice as to the value for the purchase of any property. Each prospective lessee or purchaser is to rely upon his/her own investigation, evaluation and judgment as to the advisability of leasing or purchasing the property.

Furthermore, any financial information and calculations presented in this analysis are believed to be accurate, but are not guaranteed and are intended for the purposes of projection and analysis only. The user of this financial information contained herein should consult a tax specialist concerning his/her particular circumstances before making any investment.