

57,521 SF DOCK-HEIGHT WAREHOUSE

with 2,524 SF office



Seagis Doral @ 25th
Dock-height warehouse

FOR LEASE

10005 NW 21st Street | Doral, FL 33172



Highlights

- 57,521 total SF
- 54,997 warehouse SF
- 2,524 office SF
- Heavy power 800A, 3Phase, 277V/480V
- 40' x 40' column spacing
- 10 - 9'x10' dock-high doors
- 1 - 9' x 16' dock-high doors
- 1 - 12'x16' drive-in door with oversized concrete ramp
- ESFR sprinkler system
- 30' clear height
- 123 parking spaces
- Available October 1, 2026

seagisdoralat25th.com

PROPERTY DETAILS

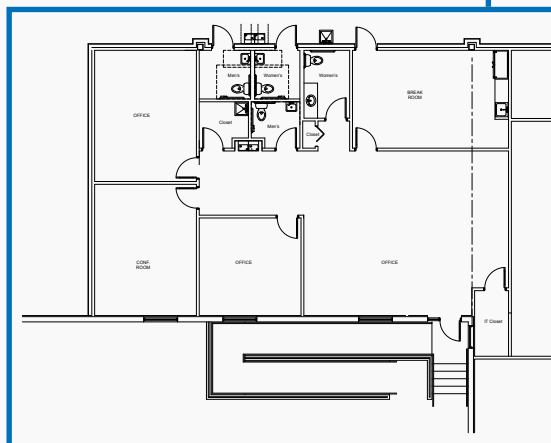
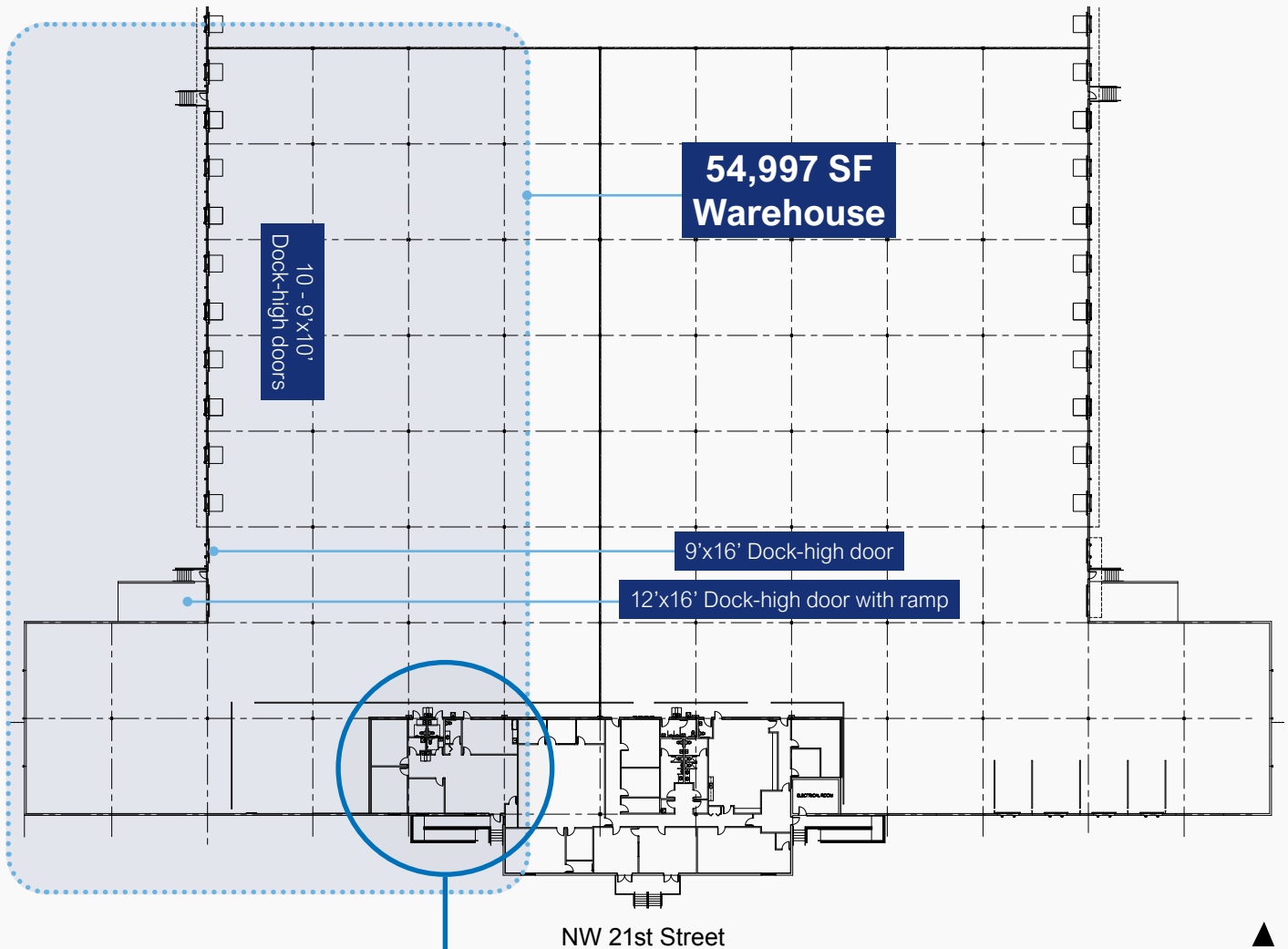
Overall site plan

10005 NW 21st Street, | Doral, FL 33172



seagisdorlat25th.com

57,521 SF Total



2,524 SF office

PROPERTY DETAILS

Image gallery

10005 NW 21st Street, | Doral, FL 33172



seagisdoralat25th.com

57,521 SF Total



PROPERTY DETAILS

Location overview

10005 NW 21st Street, | Doral, FL 33172



seagisdoralat25th.com



Location details

- Direct access to NW 25th Street
- NW 25th Street viaduct provides immediate access to major throughfares
- Proximity to Miami International Airport enhances connectivity and distribution efficiency

FOR LEASING INQUIRIES, PLEASE CONTACT:

Ana Rivera
305 778 7652
ana.rivera@jll.com

Brian Smith
305 960 8403
smith.brian@jll.com

Audley Bosch
305 960 8404
audley.bosch@jll.com

