



OFFICE FOR LEASE

4,128 SF Available

1680 Lyell Ave,
Rochester, NY 14606

Prime second-floor office space conveniently located just minutes from downtown and the western suburbs. Easy access to I-490 and I-390, right on major truck Route 31. Ample parking and close to restaurants and shopping make this a highly accessible and convenient location.

PROPERTY

highlights

- ✓ Ample Parking on Surface Lot
- ✓ Easy Access to I-490 and I-390
- ✓ Close to Downtown
- ✓ Off of Truck Route 31



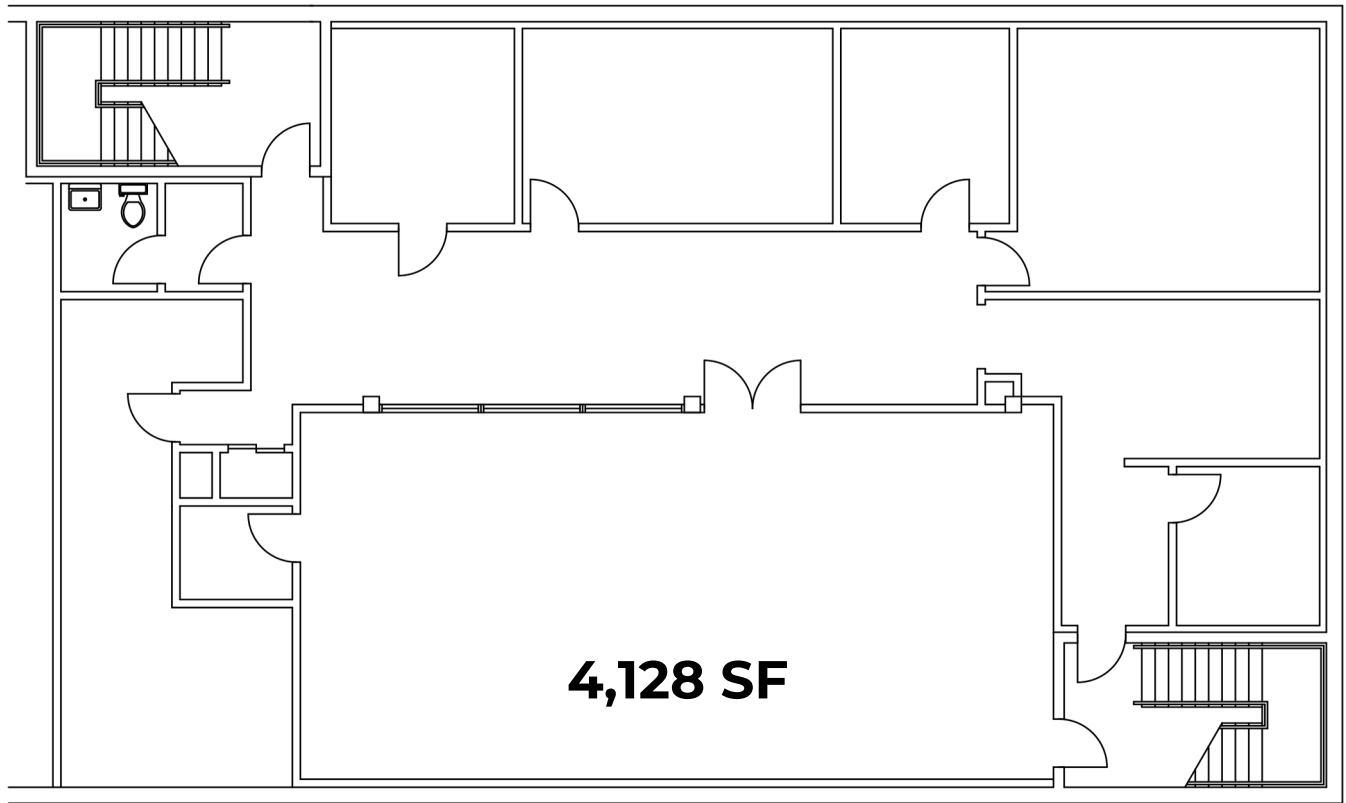
BUCKINGHAM
PROPERTIES



TOM LATTA

VP of Leasing & Tenant Relations

(585) 478-7824 | tlatta@buckprop.com



BUCKINGHAM
PROPERTIES



TOM LATTA

VP of Leasing & Tenant Relations

(585) 478-7824 | tlatta@buckprop.com