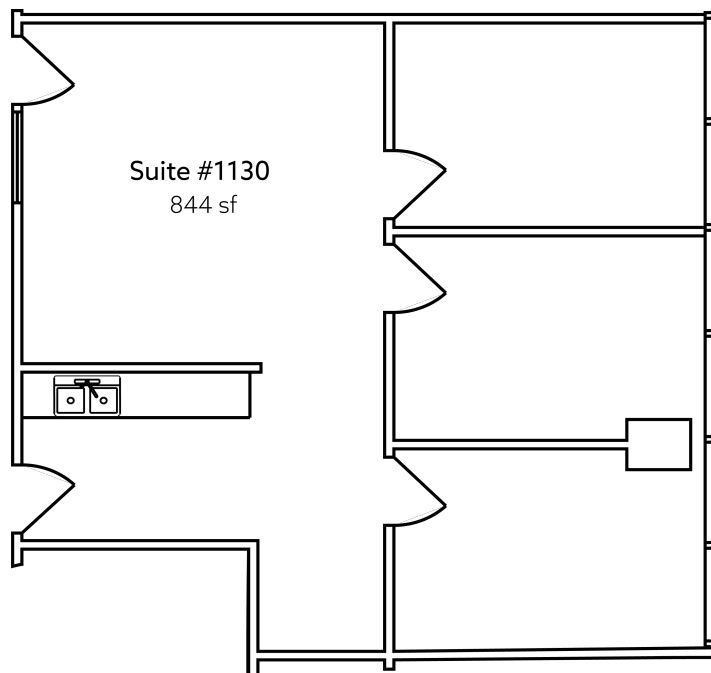


# | Unit 1130

**Rentable Area:** 844 SF

**Availability:** May 1, 2026

Efficient layout featuring three private offices, a welcoming reception area, and a kitchenette.



**LENIA CALICO**  
**SENIOR LEASING MANAGER**  
604.220.9519  
lcalico@warringtonpci.com

E. & O.E.: The information contained herein was obtained from sources which we deem reliable, and while thought to be correct, is not guaranteed by Warrington PCI Management.