

ROYAL ARSENAL RIVERSIDE

AVAILABLE
COMMERCIAL UNITS



ROYAL ARSENAL RIVERSIDE
Royal Borough of Greenwich, London

CFC

Berkeley
Designed for life

Building 10

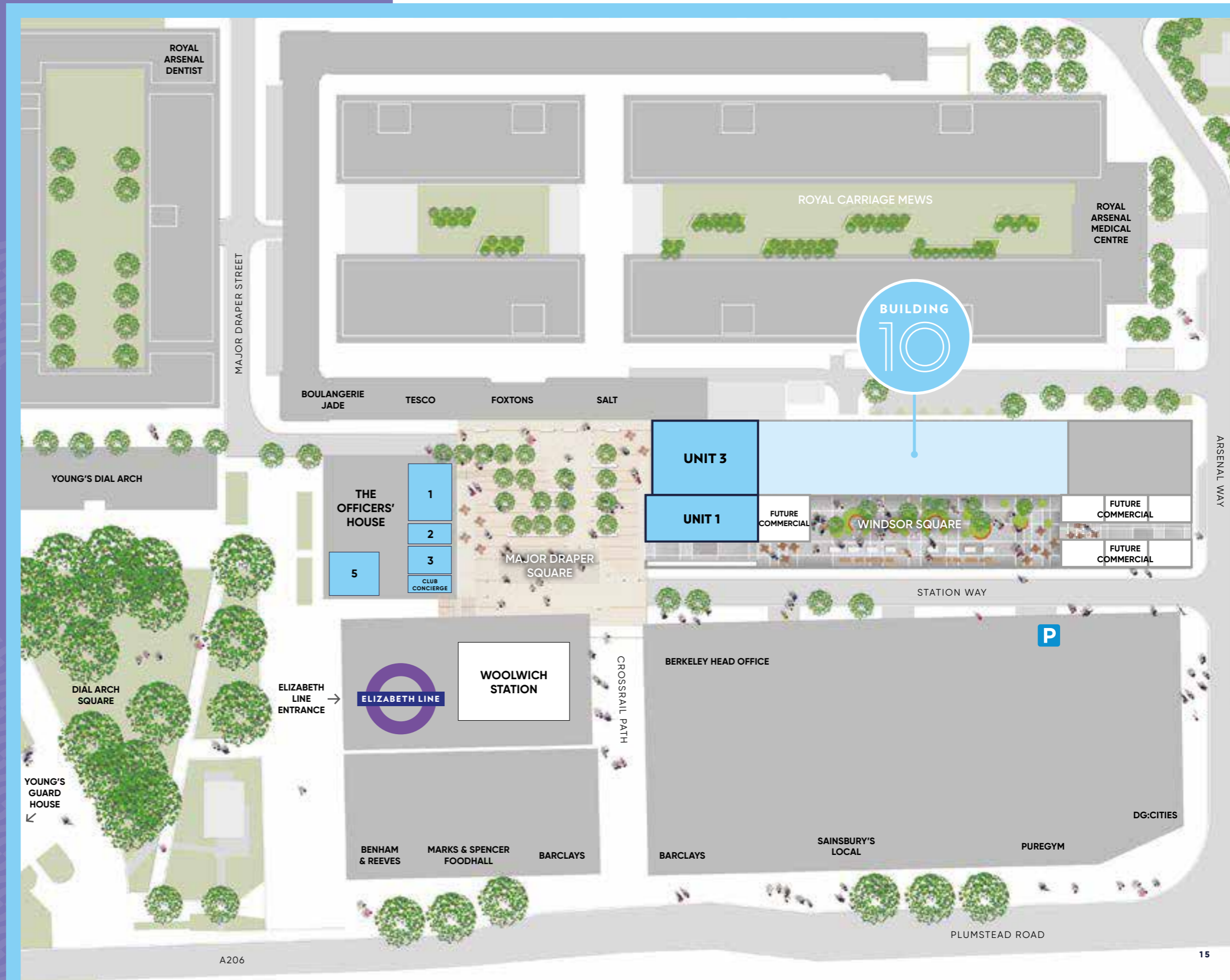
Building 10 is adjacent to Major Draper Square, which is already surrounded on all sides by a host of blue chip and independent businesses, eateries, bars and shops. Already well-established are places such as the Dial Arch Pub with its classic British fare, Boulangerie Jade serving up coffee and fresh pastries or PureGym.

The opportunity for retailers, especially for food and drink-related businesses, is unprecedented, and with so many businesses already thriving, you will be in good company. Dedicated spaces with huge potential for passing customers, the units in Building 10 offer exceptional potential for sustained, long-term commercial success. On a practical level, both units include mezzanine levels, as well as kitchen extract flues installed to the roof, but it is the heritage features and the sheer size of the spaces that give these units the wow-factor.



Photography of Building 10 at Royal Arsenal Riverside.

The site plan is indicative only, subject to change and subject to planning. In line with our policy of continuous improvement we reserve the right to alter the layout, building style, landscaping and specification at anytime without notice.





Both commercial units open out onto Major Draper Square, which provides half an acre of central public realm, with access to nearby commercial tenants such as Salt and M&S, attracting high footfall at all times of the day.

UNIT 3

UNIT 1

BUILDING

10

Available units

Berkeley currently have two commercial units available, which fall under classes: A1, A2, A3, A4, B1, D1 & D2, ideally suited for a range of uses including food and beverage, retail or gym. These two new commercial units will compliment the already existing businesses at Royal Arsenal Riverside.

UNIT 1

MEASURES APPROXIMATELY

GROUND – 1,722 SQFT
MEZZANINE – 1,076 SQFT
TOTAL – 2,798 SQFT

UNIT 3

MEASURES APPROXIMATELY

GROUND – 2,939 SQFT
MEZZANINE – 1,894 SQFT
TOTAL – 4,833 SQFT



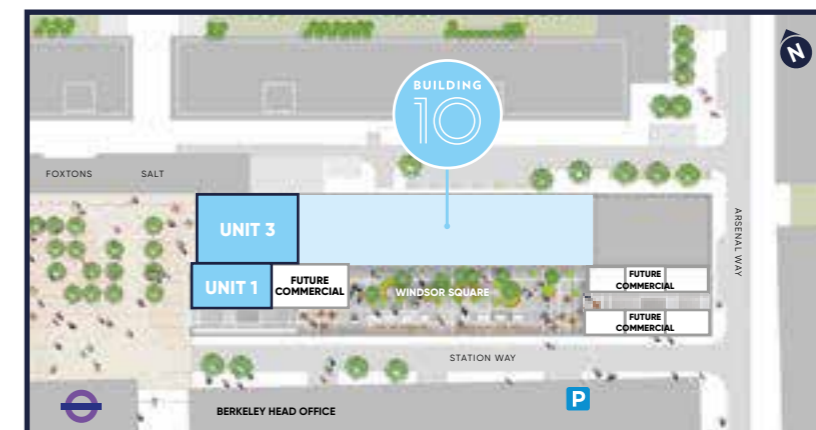
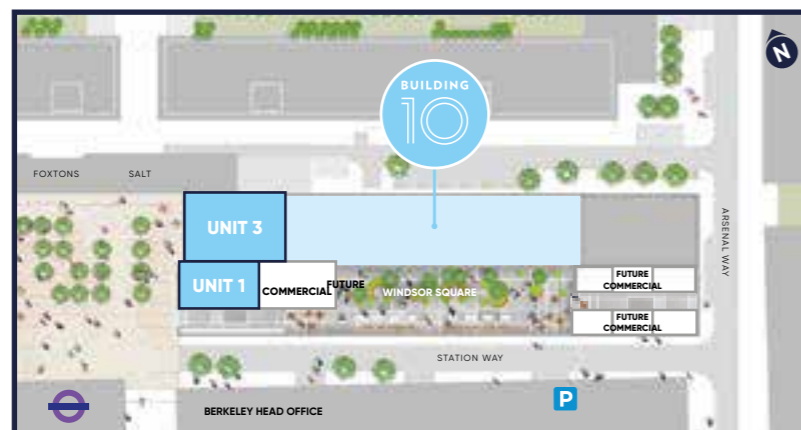
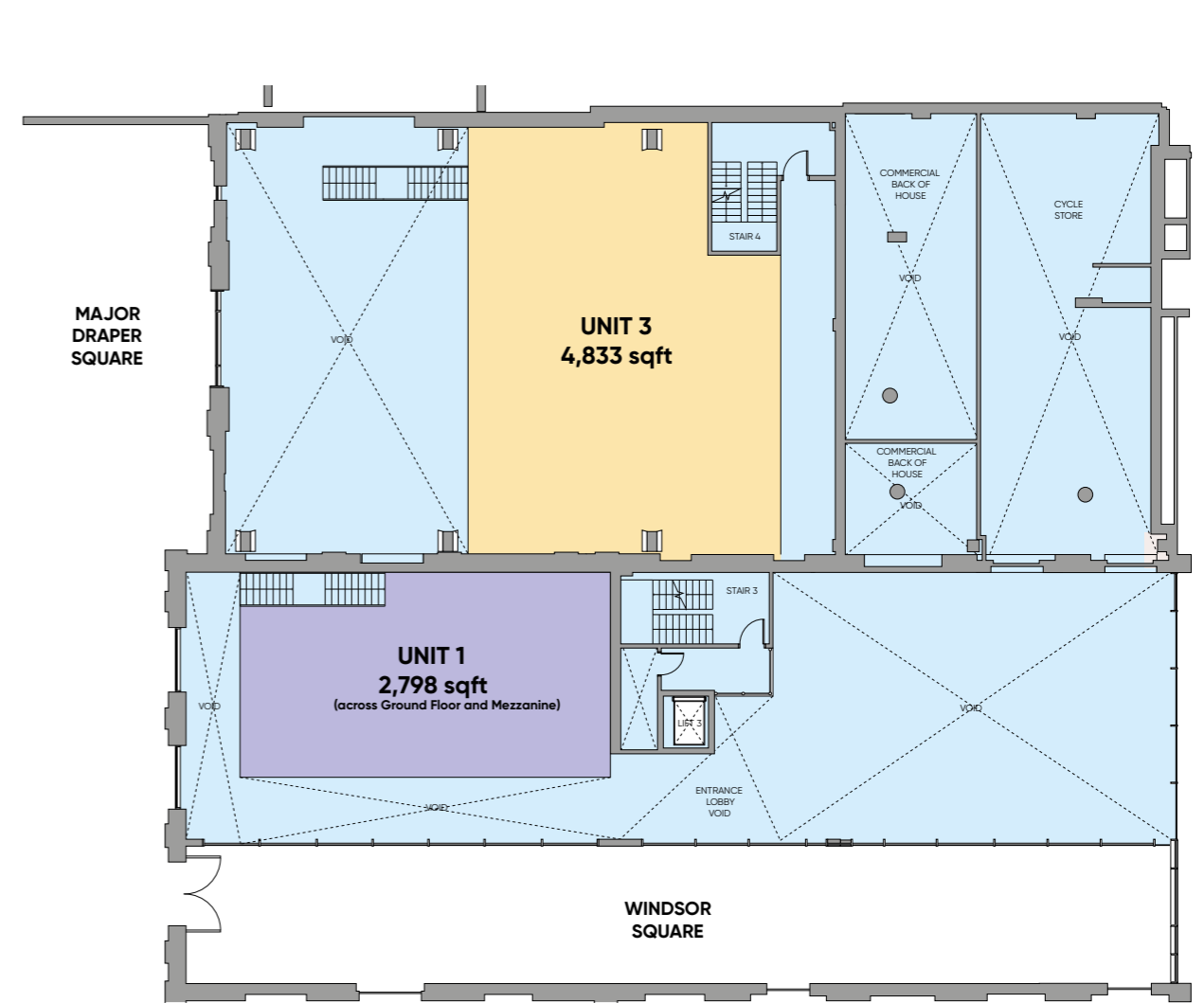
Photography of Dial Arch (Young's)



Photography of SALT (Ossett Brewery)



Photography of Building 10 Windsor Square



CONTACT INFORMATION

ALEX LOWRY

Email: alex@cfcommercial.co.uk

CATHERINE JOHNSON

catherine@cfcommercial.co.uk

Tel: 0203 370 4334

CFC

Alphabeta Building
2 Worship Street Shoreditch,
London EC2A 2AH
www.cfcommercial.co.uk



ROYAL ARSENAL RIVERSIDE
Royal Borough of Greenwich, London

OUR VISION
2030
TRANSFORMING TOMORROW

Berkeley
Designed for life

The information in this document is indicative and is intended to act as a guide only as to the finished product. Accordingly, due to Berkeley's policy of continuous improvement, the finished product may vary from the information provided. These particulars should not be relied upon as statements of fact or representations and applicants must satisfy themselves by inspection or otherwise as to their correctness. This information does not constitute a contract or warranty. The dimensions given on plans are subject to minor variations and are not intended to be used for carpet sizes, appliance sizes or items of furniture. Royal Arsenal Riverside and Building 10 are marketing names and will not necessarily form part of the approved postal address. Applicants are advised to contact Berkeley to ascertain the availability of any particular property.