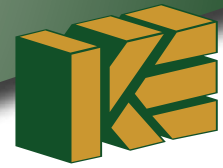


Winters Run

1118 Bel Air Road, Bel Air, MD 21014

Harford County



KLEIN ENTERPRISES

DEVELOPMENT • ACQUISITIONS • BROKERAGE • MANAGEMENT

Generations of experience, decades of success.



ABOUT THE PROPERTY

- Located between Bel Air Bypass (US Route 1) and Bel Air Road (US Business Route 1) in Bel Air, MD.
- Fallston submarket, which has seen steady growth over the last 15 years.
- 1.49 acre Historic building
- B-3 Zoning (General Business District).
- Adjacent to 288 Class "A" rental apartment community
- Households in the area have a median income of \$79,427
- New traffic signal at Bel Air Road and Old Joppa Road.
- 4 miles from I-95 Exit #77 A-B
- 2 miles from UM Upper Chesapeake Medical Center
- 16 miles from Aberdeen Proving Ground Gate
- 35 miles from BWI Thurgood-Marshall Airport



Market Aerial



WINTERS RUN
1118 Belair Road

84 LUMBER

TOYOTA
Jeep
HYUNDAI
DODGE

Wawa

enterprise

HONDA

Ford

Walmart

DUNKIN' DONUTS

CVS/pharmacy

McDonald's

TEXAS ROADHOUSE

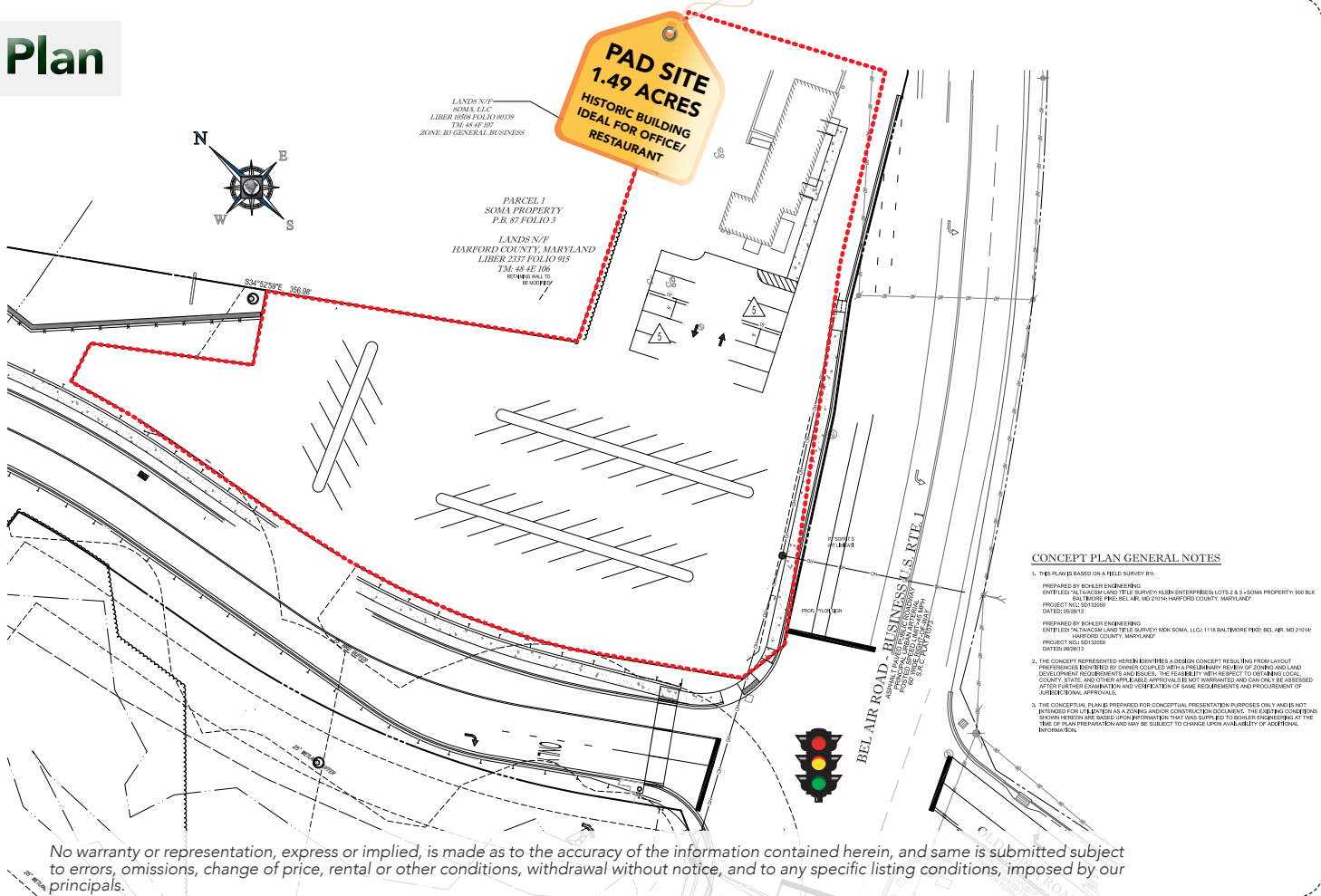
BURGER KING

The Mallet
GRUB HOUSE & SPORTS BAR

ROYAL FARMS

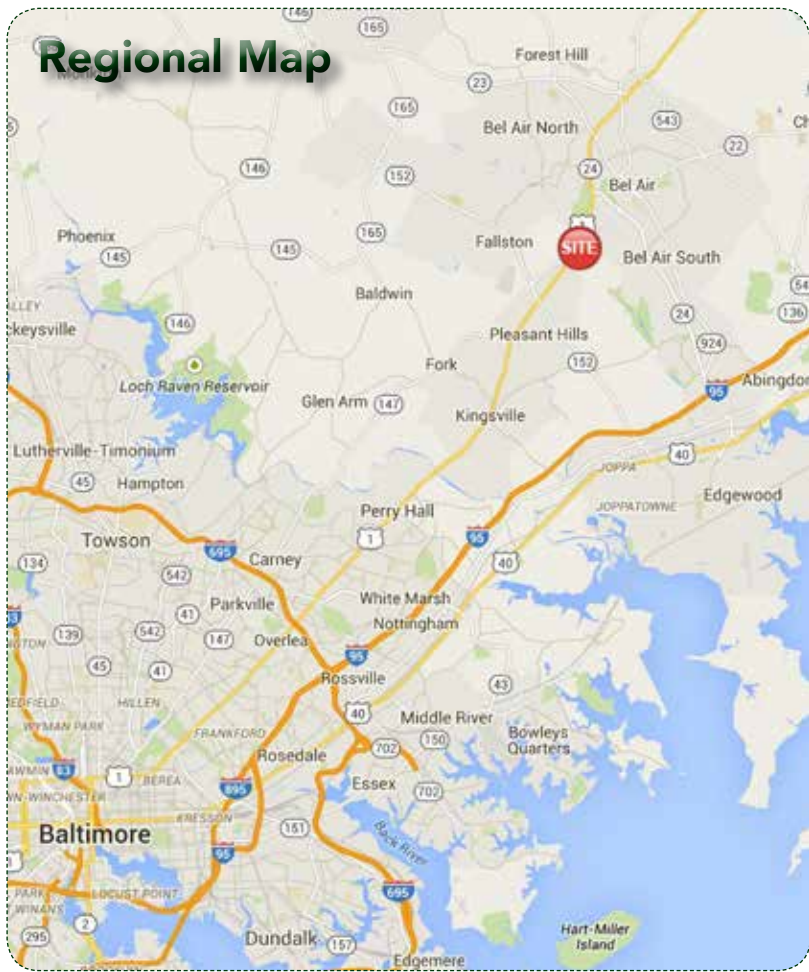
2017 Demographics	1 mile	3 miles	5 miles
Population	927	43,549	113,851
Avg. Household Income	\$97,293	\$112,010	\$116,932
Employees	989	26,233	41,838

Site Plan



No warranty or representation, express or implied, is made as to the accuracy of the information contained herein, and same is submitted subject to errors, omissions, change of price, rental or other conditions, withdrawal without notice, and to any specific listing conditions, imposed by our principals.

Regional Map




Local Map



KLEIN ENTERPRISES
DEVELOPMENT • ACQUISITIONS • BROKERAGE • MANAGEMENT
Generations of experience, decades of success.

1777 Reisterstown Road, Suite 245
Baltimore, MD 21208

410.902.0290

For Leasing Information, Contact: 
Patricia Palumbo ppalumbo@kleinenterprises.com
Paul Weinberg pweinberg@kleinenterprises.com

www.KleinEnterprises.com



Find Us: