

FOR LEASE



1318 S. Crystal Lake Drive | Orlando, FL

Curry Ford West District, adjacent to the Hourglass District



- Building ready for immediate “vanilla box” condition delivery.
- Flexible layout options: single/multiple tenants.
- Strong demographics with a total population of 323,129 within a 5-mile radius and average household income of \$104,577.
- Close proximity to Downtown Orlando, park neighborhoods, and several regional medical centers.
- Located within the main street Curry Ford West District, adjacent to the Hourglass District and Milk District.



3,454 SF

PURE PROPERTIES GROUP | info@purepropertiesgroup.com | 800.570.5262

This information contained herein was obtained from sources deemed to be reliable; however Pure Properties Group makes no guarantees, warranties, or representations as to the completeness or accuracy thereof.

FOR LEASE

3,454 SF



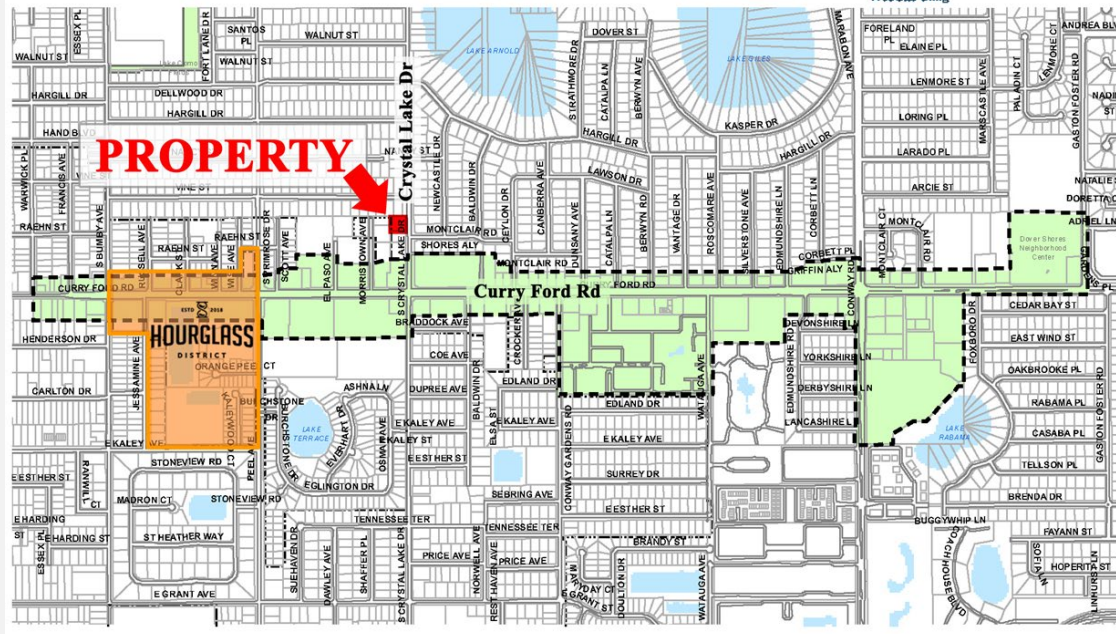
1318 S. Crystal Lake Drive | Orlando, FL

Curry Ford West District, adjacent to the Hourglass District



- One of Orlando's newest accredited Main Street districts, Curry Ford West is also its most uniquely charming.
- Visitors to the district will enjoy a vast collection of craft beer, both locally brewed and from all over the world.
- A selection of diverse dining options - Greek, Lebanese, Mexican, Cuban, Irish, Italian & arguably the best local pizza in Orlando.
- Other businesses and services include produce markets, bakeries, yoga studios, coffee shops & salons perfect for a pampering day.
- Two beautiful nearby lakeside parks and established tree-lined neighborhoods is bound to be the district where most cherished memories are made.

Curry Ford West Market Street Program



Existing Target Area

City of Orlando Economic Development Department, June 2024

PURE PROPERTIES GROUP | info@purepropertiesgroup.com | 800.570.5262

This information contained herein was obtained from sources deemed to be reliable; however Pure Properties Group makes no guarantees, warranties, or representations as to the completeness or accuracy thereof.

FOR LEASE

3,454 SF



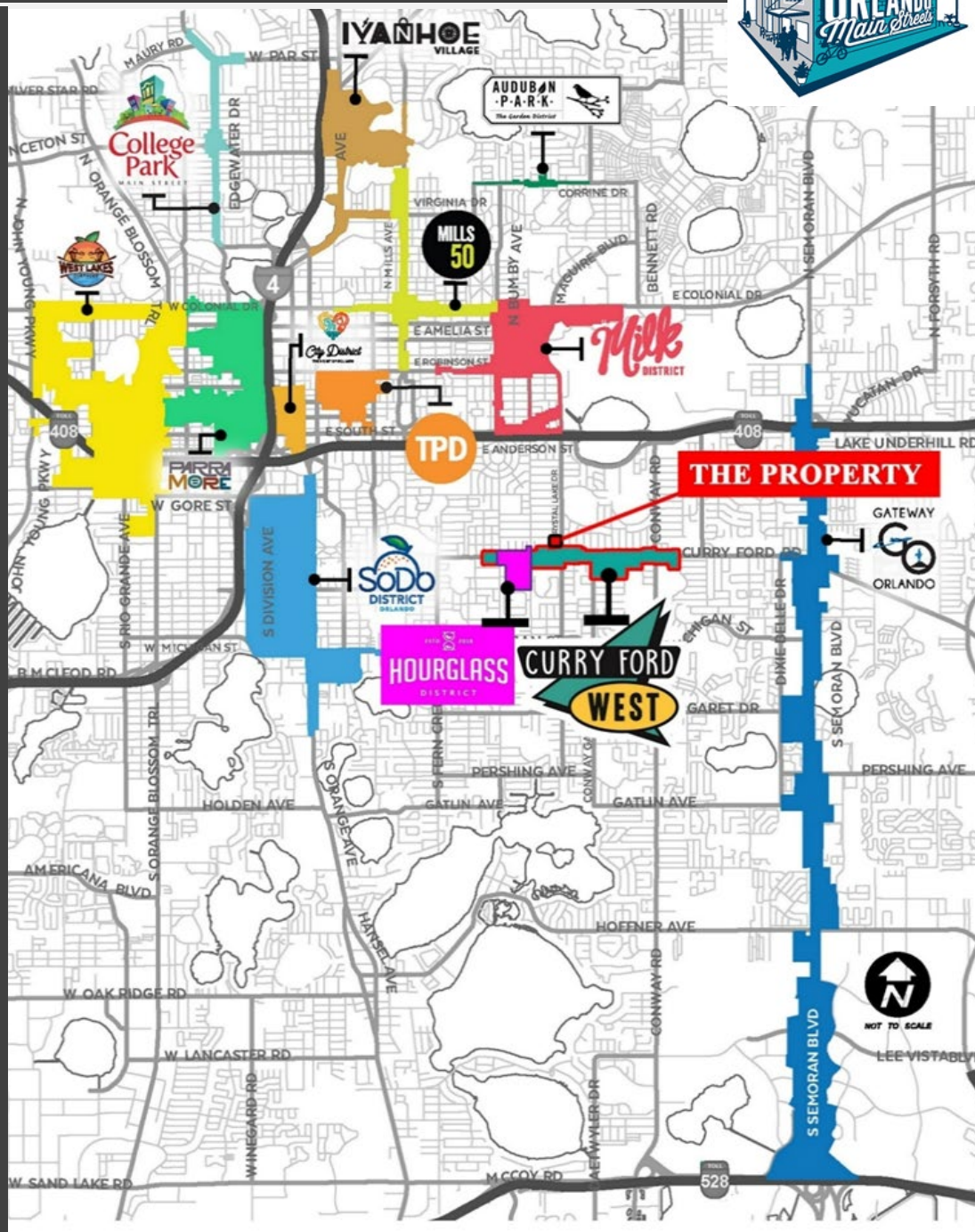
1318 S. Crystal Lake Drive | Orlando, FL

Curry Ford West District, adjacent to the Hourglass District

Orlando's Main Street Districts



- Created in 2008. With annual financial support, technical assistance and intensive training from the City of Orlando, Orlando Main Street Districts create, define and strengthen the commercial districts in the city.
- The Orlando Main Streets' focus on distinctive architecture, a pedestrian-friendly environment, personal service, local ownership and a sense of community.
- Each District creates an individual work plan envisioned and implemented by a nonprofit Board of Directors.
- Orlando Main Streets serve as the economic backbone for the city's existing neighborhoods.



PURE PROPERTIES GROUP | info@purepropertiesgroup.com | 800.570.5262

This information contained herein was obtained from sources deemed to be reliable; however Pure Properties Group makes no guarantees, warranties, or representations as to the completeness or accuracy thereof.

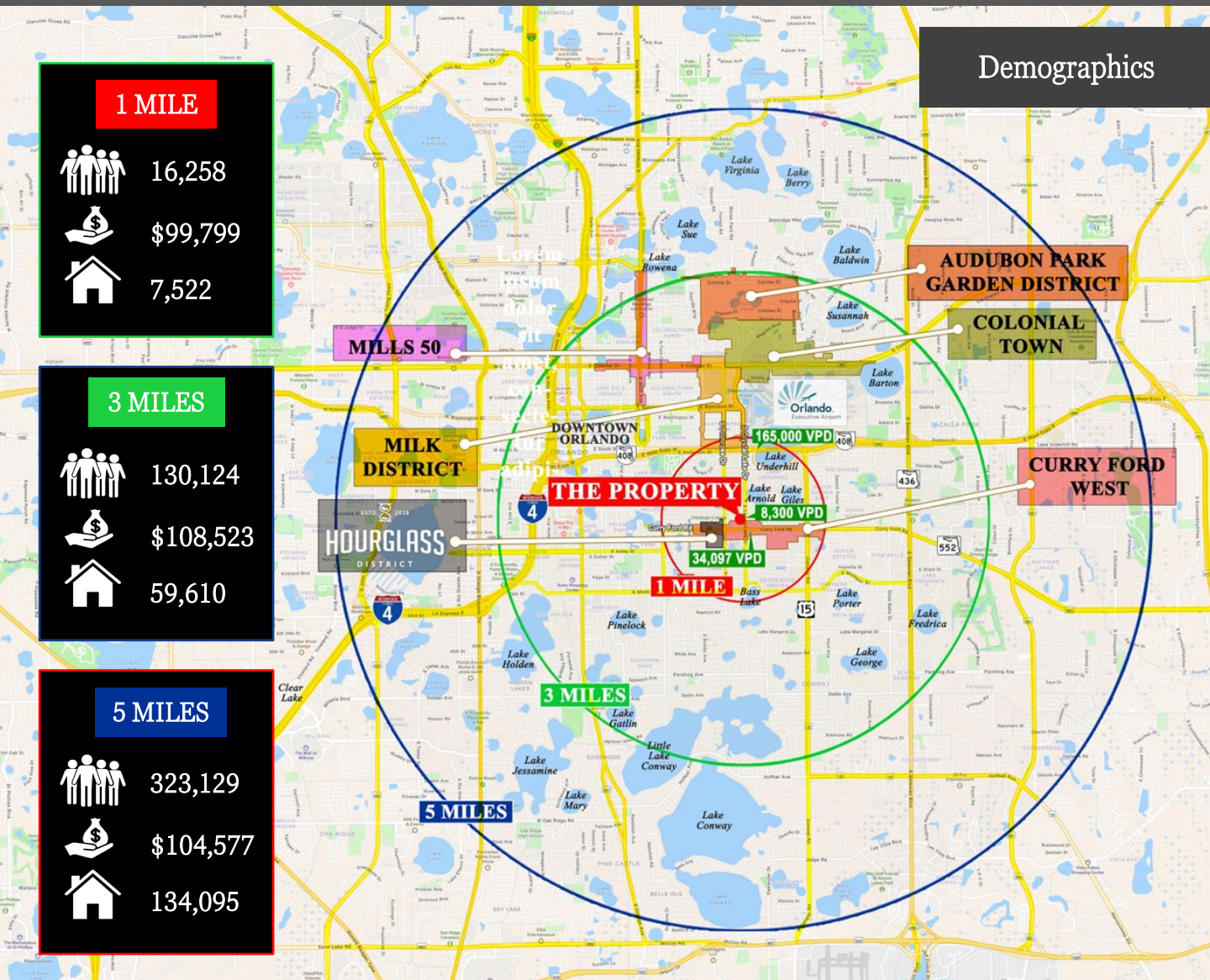
FOR LEASE

3,454 SF

PURE
PROPERTIES
GROUP

1318 S. Crystal Lake Drive | Orlando, FL

Curry Ford West District, adjacent to the Hourglass District



Distances

- Hwy 408 which carries approximately 155,000 vehicles per day is less than a mile away.
 - Approximately 3 miles traveling west to Interstate 4 (I-4).
 - About 3 miles to and from Downtown Orlando.
- Orlando International Airport is about 7.6 miles south, an 18-minute drive.

PURE PROPERTIES GROUP | info@purepropertiesgroup.com | 800.570.5262

This information contained herein was obtained from sources deemed to be reliable; however Pure Properties Group makes no guarantees, warranties, or representations as to the completeness or accuracy thereof.

FOR LEASE

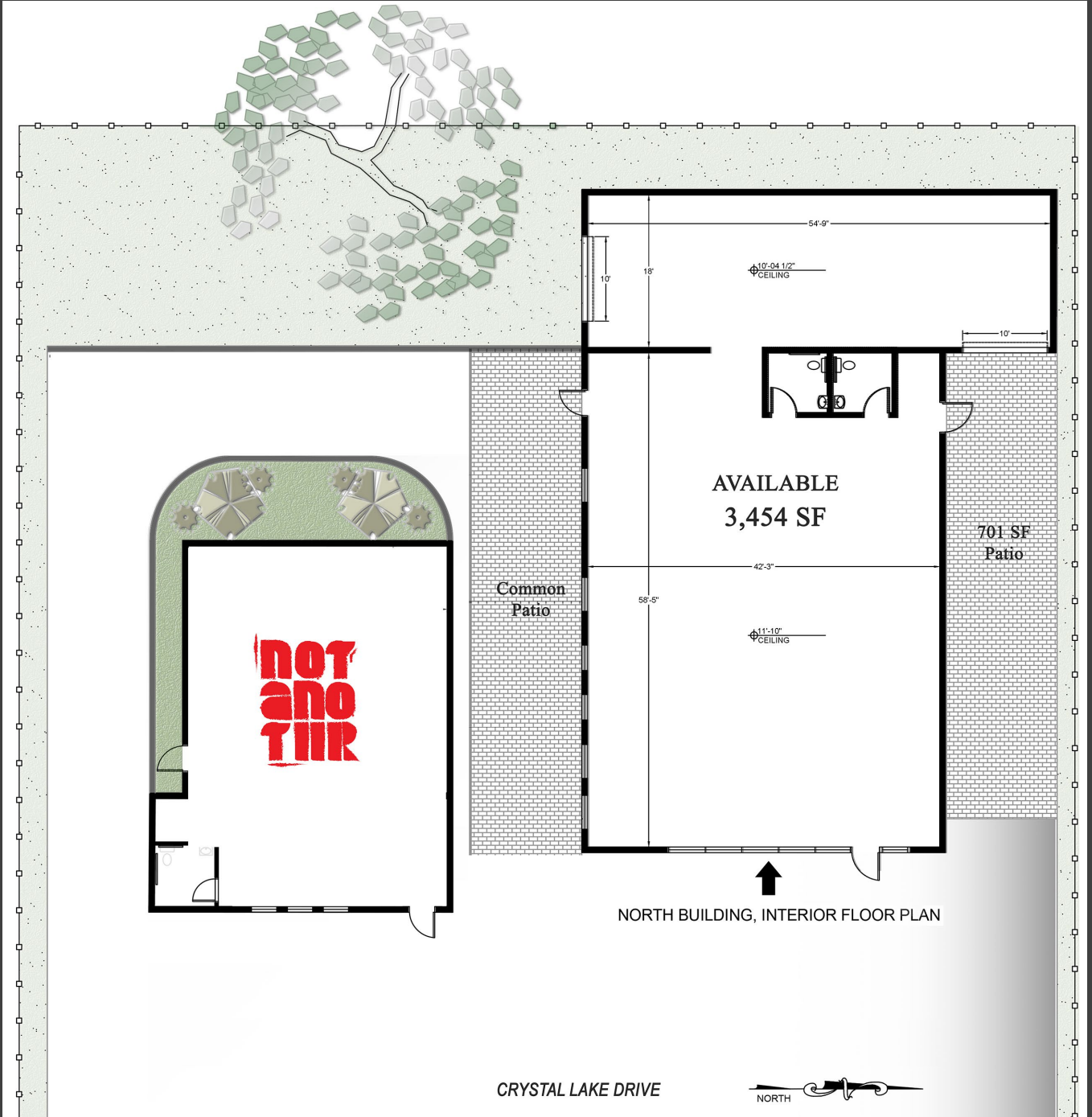
3,454 SF



1318 S. Crystal Lake Drive | Orlando, FL

Curry Ford West District, adjacent to the Hourglass District

Conceptual Site Plan



PURE PROPERTIES GROUP | info@purepropertiesgroup.com | 800.570.5262

This information contained herein was obtained from sources deemed to be reliable; however Pure Properties Group makes no guarantees, warranties, or representations as to the completeness or accuracy thereof.

FOR LEASE

3,454 SF

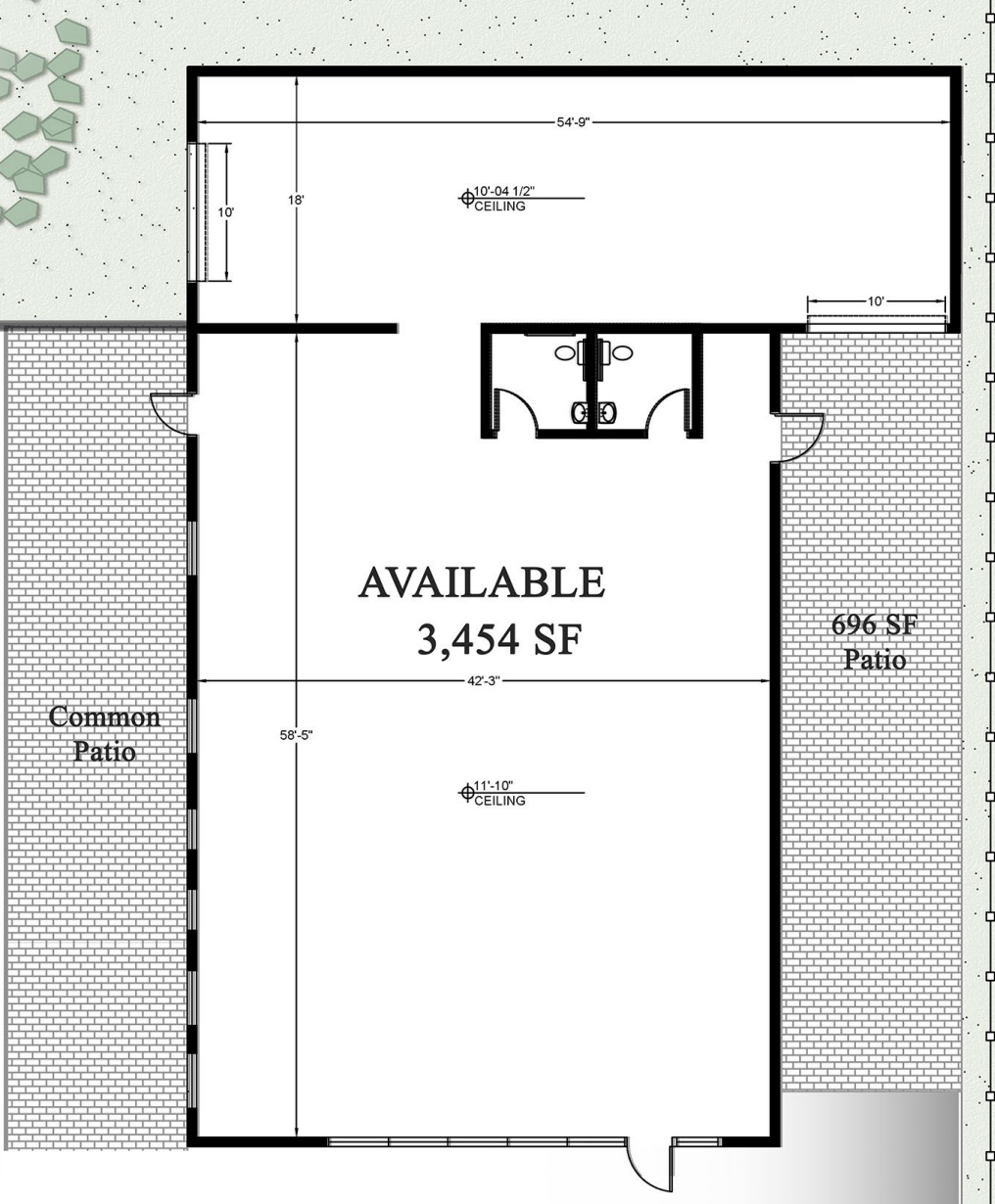


1318 S. Crystal Lake Drive | Orlando, FL

Curry Ford West District, adjacent to the Hourglass District

Conceptual Floor Plan Building 1

- Open Floor Plan
- Conditioned Vanilla Box
- Bonus roll-up door
- Potential outdoor seating area opportunity
- Open to a variety of F & B concepts, retail and service uses
- 240v, 3 phase power
- Zoned ORL-AC-1
- Land Use Type: COMM-AC



NORTH BUILDING, INTERIOR FLOOR PLAN

PURE PROPERTIES GROUP | info@purepropertiesgroup.com | 800.570.5262

This information contained herein was obtained from sources deemed to be reliable; however Pure Properties Group makes no guarantees, warranties, or representations as to the completeness or accuracy thereof.