

FOR LEASE

730 North Main St., Waterbury, CT

MATTHEWS COMMERCIAL PROPERTIES



±50,800 SF Clear-Span Industrial Warehouse with 27.5' Clear Height \$5.95 PSF Gross + Utilities

- ±50,800 SF fully clear-span industrial warehouse
- 2 dock-height loading doors: (8'6" x 8')
- 4 drive-in doors: (11'6" x 13'9")
- 18.5' – 27.5' clear height
- Infrared gas heating system
- Perimeter windows provide natural light
- Large parking lot
- ±3,094 SF covered parking area
- Small office area with private restroom

GERRY D. MATTHEWS
203.753.5800
matthewscre@gmail.com

NOAH D. MATTHEWS
203.721.3337
matthewsnoah@gmail.com

FOR LEASE

730 North Main St., Waterbury, CT



BUILDING

- Total SF: ±303,576
- Total Available SF: ±50,800 SF
- Exterior Construction: Masonry block construction
- Interior Construction: Clear-span steel frame and concrete slab floor
- Roof: Metal deck
- Year Built: 1890

PROPERTY

- Lot Size: 12.25 acres
- Distance to I-84 & Rt-8: 1 Mile & 1.3 Miles
- Parking: Private lot
- Zoning: RM

MECHANICALS & UTILITIES

- Heat Source / Type: Gas – Infrared System
- Electric: Eversource
- Power Supply: 480/277V three-phase service

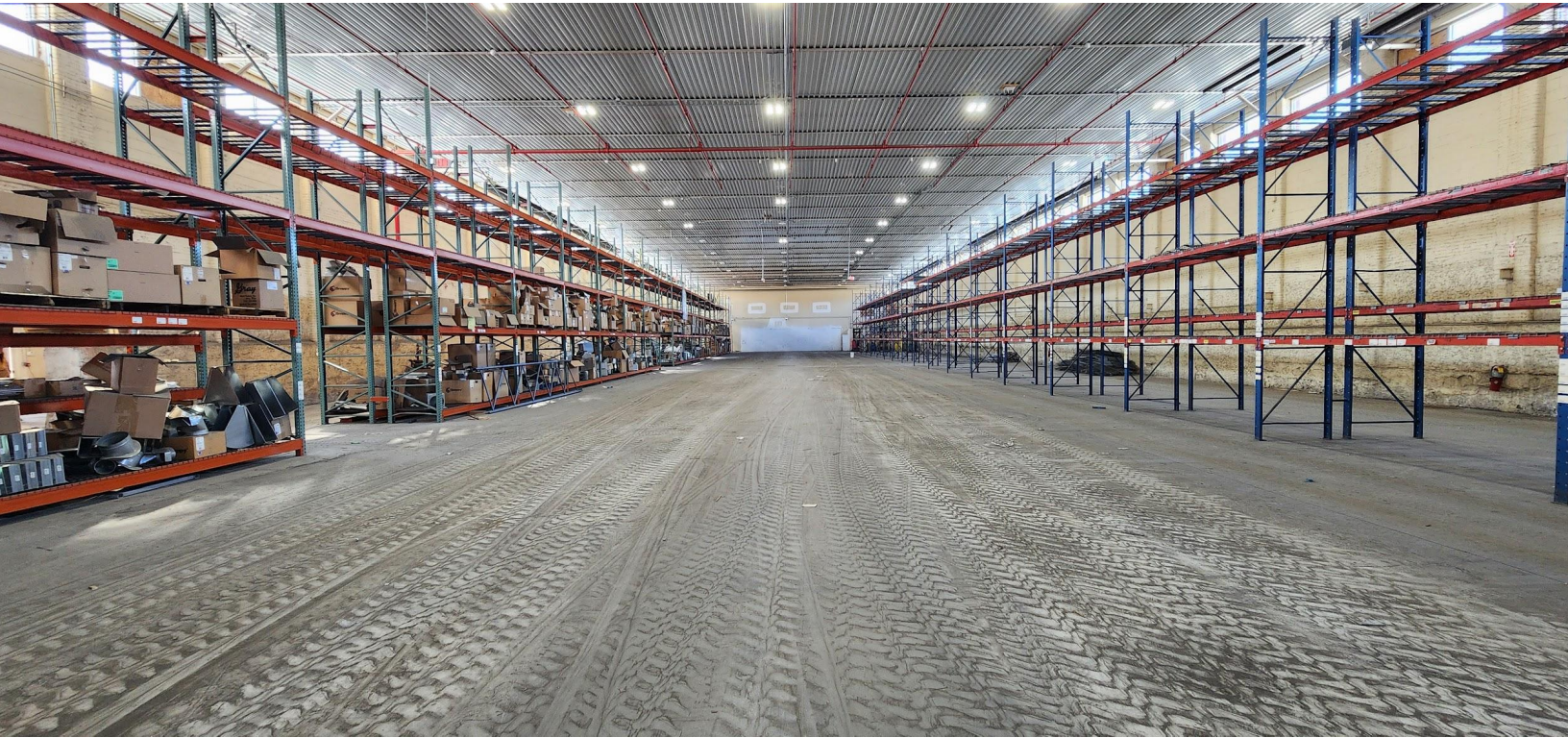
FOR LEASE

730 North Main St., Waterbury, CT



FOR LEASE

730 North Main St., Waterbury, CT



FOR LEASE

730 North Main St., Waterbury, CT



FOR LEASE

730 North Main St., Waterbury, CT



FOR LEASE

730 North Main St., Waterbury, CT



FOR LEASE

730 North Main St., Waterbury, CT



FOR LEASE

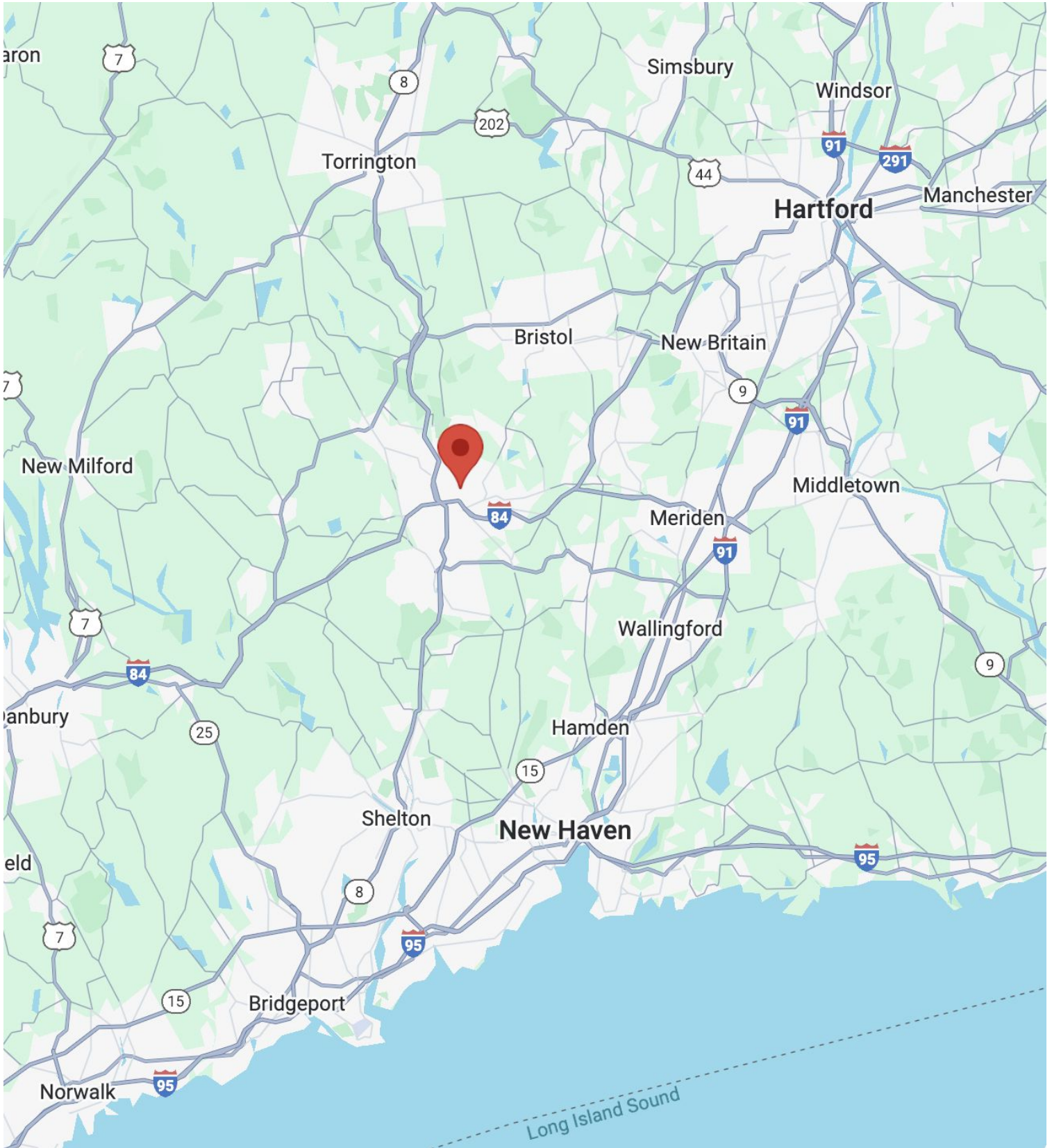
730 North Main St., Waterbury, CT



FOR LEASE



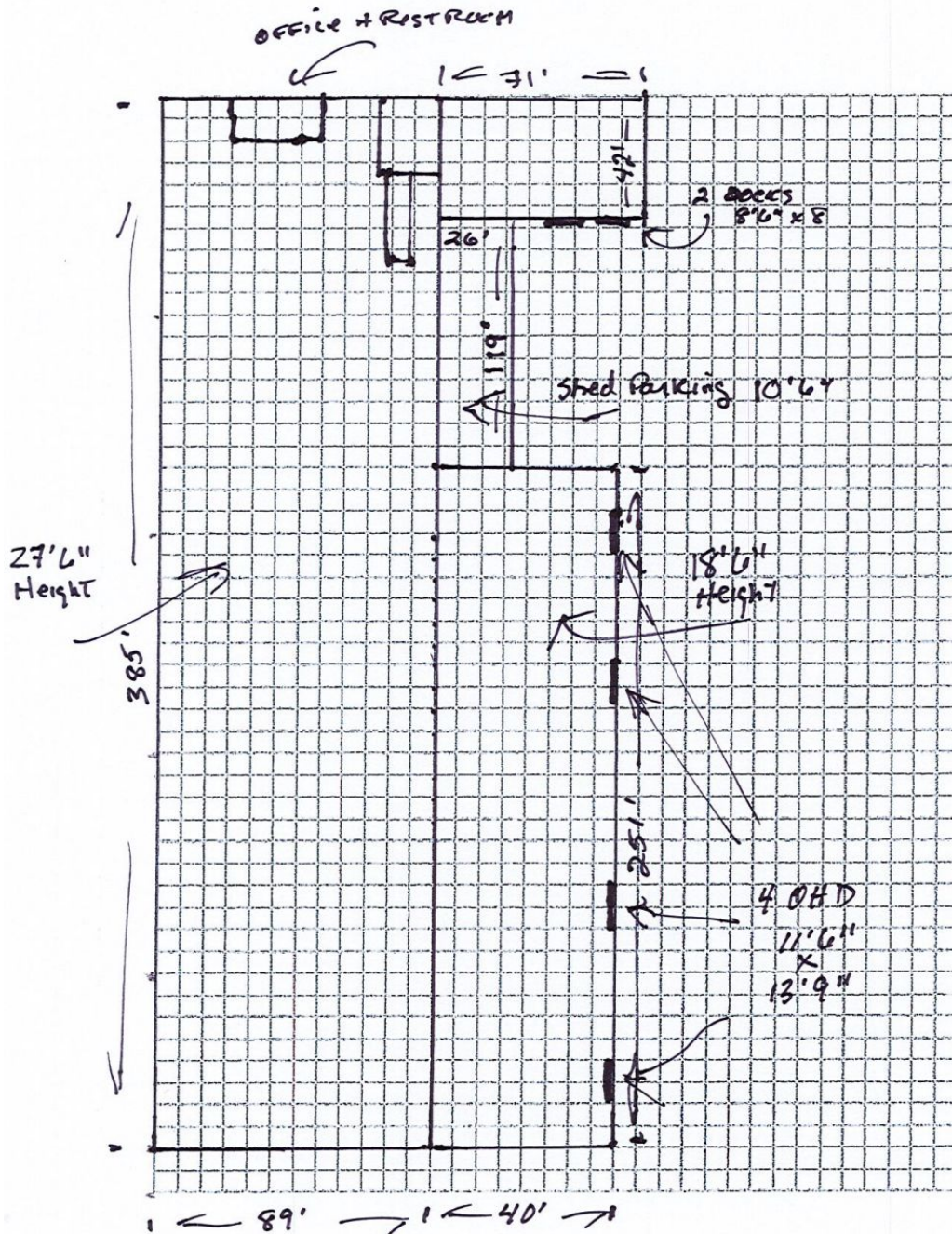
730 North Main St., Waterbury, CT



FOR LEASE

730 North Main St., Waterbury, CT

MATTHEWS COMMERCIAL PROPERTIES



730 NORTH MAIN ST WTB'Y

□ 1 SB = 8' +/-

GERRY D. MATTHEWS
203.753.5800
matthewscre@gmail.com

NOAH D. MATTHEWS
203.721.3337
matthewsnoah@gmail.com

MATTHEWS COMMERCIAL PROPERTIES LLC
819 Straits Tpke, Suite 3B
Middlebury, CT 06762
matthewscommercial.com