

18 KINGS HIGHWAY WEST

Haddonfield, NJ 08033

 FOR LEASE

 OFFICE

 3,328 SF



PROPERTY DESCRIPTION

- 3,328 +/- SF Office building for lease
- On site parking for 10 cars
- Great location across from the PATCO speedline station
- Within walking distance to downtown restaurants and shopping
- Available immediately
- Showings by appointment only

LEASE RATE:

\$4,700 PER MONTH (NNN) \$17 PSF

FOR MORE INFORMATION


Joe Riggs

 609.352.1162

 joe.riggs@naimertz.com

NAI MERTZ DISCLAIMER: NO WARRANTY OR REPRESENTATION, EXPRESS OR IMPLIED, IS MADE AS TO THE ACCURACY OF THE INFORMATION CONTAINED HEREIN, AND THE SAME IS SUBMITTED SUBJECT TO ERRORS, OMISSIONS, CHANGE OF PRICE, RENTAL OR OTHER CONDITIONS, PRIOR SALE, LEASE OR FINANCING, OR WITHDRAWAL WITHOUT NOTICE, AND OF ANY SPECIAL LISTING CONDITIONS IMPOSED BY OUR PRINCIPALS NO WARRANTIES OR REPRESENTATIONS ARE MADE AS TO THE CONDITION OF THE PROPERTY OR ANY HAZARDS CONTAINED THEREIN ARE ANY TO BE IMPLIED. OUTLINES ARE APPROXIMATE AND SHOWN ONLY TO IDENTIFY THE PARCEL IN CONSIDERATION.

NAI Mertz

 **NAI Mertz** | 21 Roland Avenue
Mount Laurel, NJ 08054
856.234.9600 | www.naimertz.com



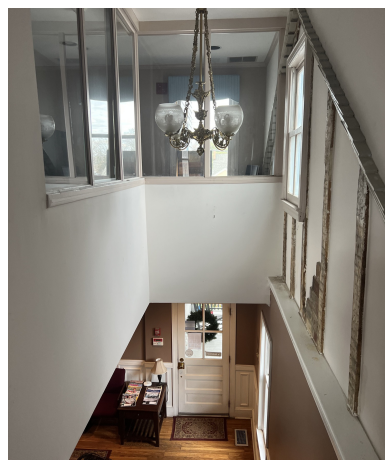
18 KINGS HIGHWAY WEST

Haddonfield, NJ 08033

 FOR LEASE

 OFFICE

 3,328 SF



FOR MORE INFORMATION


Joe Riggs

 609.352.1162

 joe.riggs@naimertz.com

NAI MERTZ DISCLAIMER: NO WARRANTY OR REPRESENTATION, EXPRESS OR IMPLIED, IS MADE AS TO THE ACCURACY OF THE INFORMATION CONTAINED HEREIN, AND THE SAME IS SUBMITTED SUBJECT TO ERRORS, OMISSIONS, CHANGE OF PRICE, RENTAL OR OTHER CONDITIONS, PRIOR SALE, LEASE OR FINANCING, OR WITHDRAWAL WITHOUT NOTICE, AND OF ANY SPECIAL LISTING CONDITIONS IMPOSED BY OUR PRINCIPALS NO WARRANTIES OR REPRESENTATIONS ARE MADE AS TO THE CONDITION OF THE PROPERTY OR ANY HAZARDS CONTAINED THEREIN ARE ANY TO BE IMPLIED. OUTLINES ARE APPROXIMATE AND SHOWN ONLY TO IDENTIFY THE PARCEL IN CONSIDERATION.

NAI Mertz

 **NAI Mertz** | 21 Roland Avenue
Mount Laurel, NJ 08054
856.234.9600 | www.naimertz.com



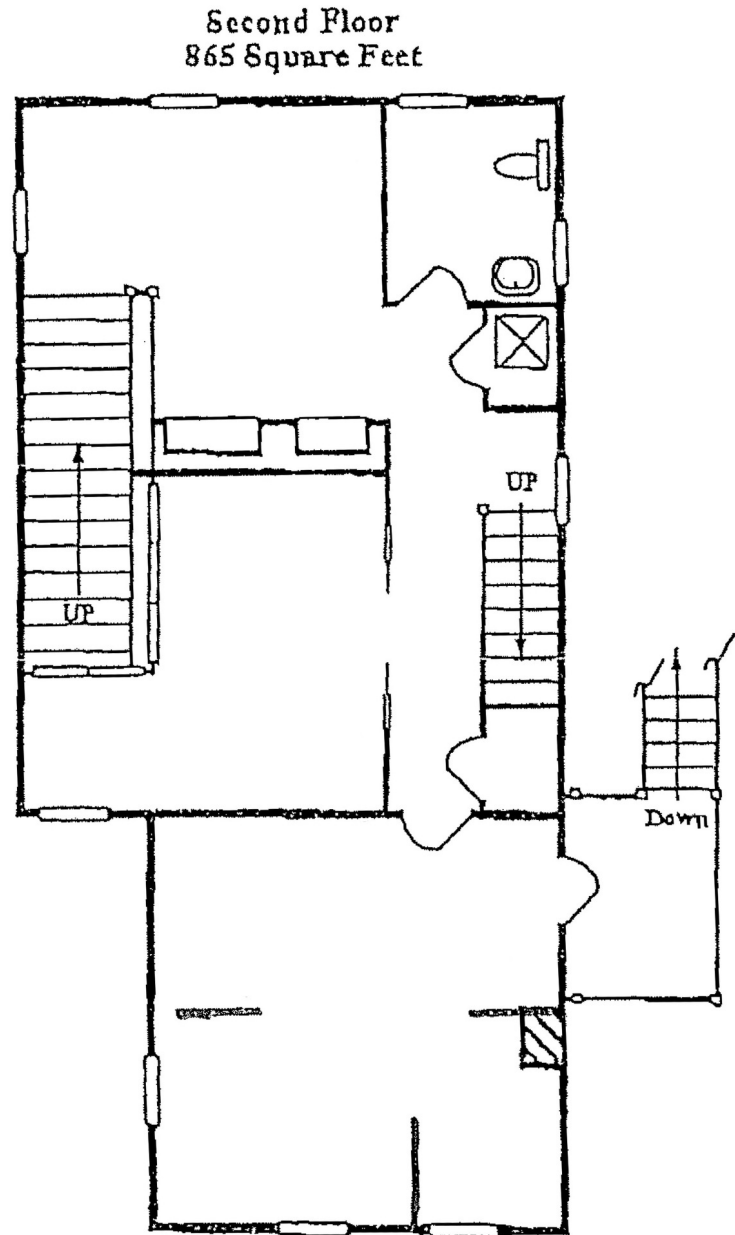
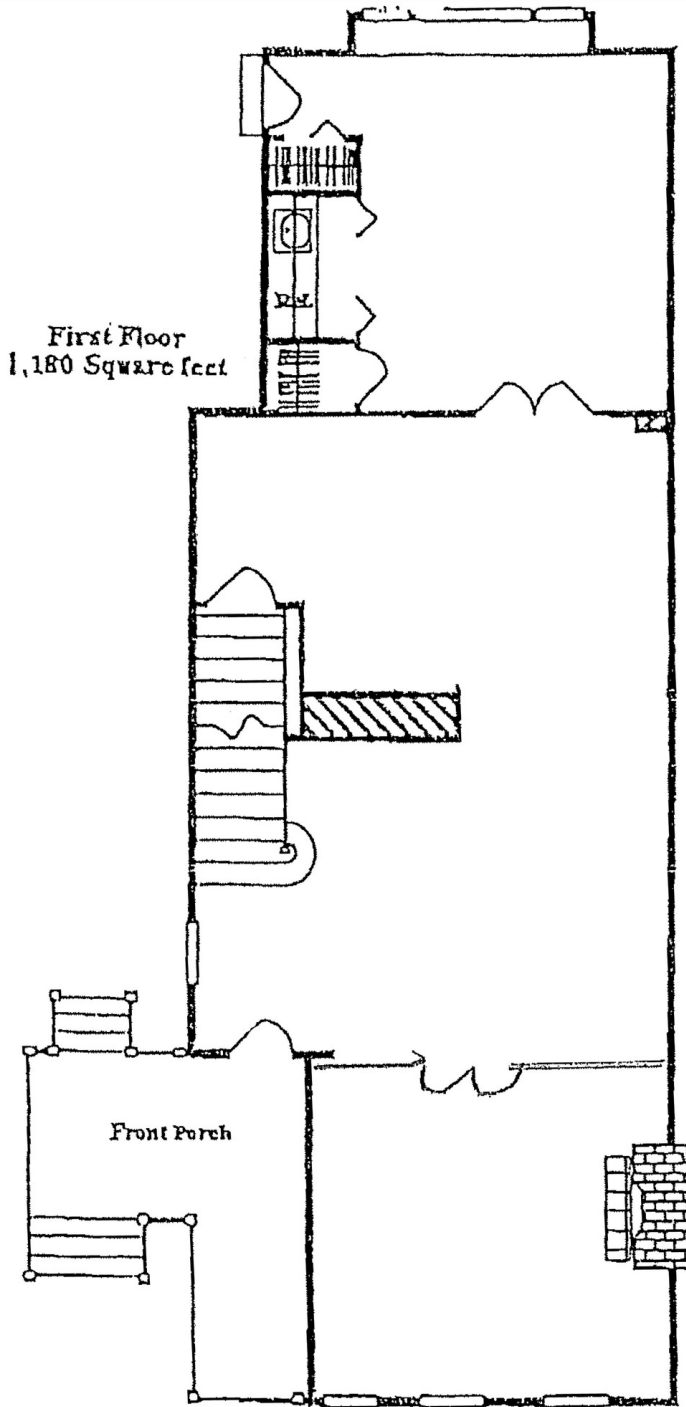
18 KINGS HIGHWAY WEST

Haddonfield, NJ 08033

 FOR LEASE

 OFFICE

 3,328 SF



FOR MORE INFORMATION


Joe Riggs

 609.352.1162

 joe.riggs@naimertz.com

NAI MERTZ DISCLAIMER: NO WARRANTY OR REPRESENTATION, EXPRESS OR IMPLIED, IS MADE AS TO THE ACCURACY OF THE INFORMATION CONTAINED HEREIN, AND THE SAME IS SUBMITTED SUBJECT TO ERRORS, OMISSIONS, CHANGE OF PRICE, RENTAL OR OTHER CONDITIONS, PRIOR SALE, LEASE OR FINANCING, OR WITHDRAWAL WITHOUT NOTICE, AND OF ANY SPECIAL LISTING CONDITIONS IMPOSED BY OUR PRINCIPALS NO WARRANTIES OR REPRESENTATIONS ARE MADE AS TO THE CONDITION OF THE PROPERTY OR ANY HAZARDS CONTAINED THEREIN ARE ANY TO BE IMPLIED. OUTLINES ARE APPROXIMATE AND SHOWN ONLY TO IDENTIFY THE PARCEL IN CONSIDERATION.

NAIMertz

 **NAI Mertz** | 21 Roland Avenue
Mount Laurel, NJ 08054
856.234.9600 | www.naimertz.com



18 KINGS HIGHWAY WEST

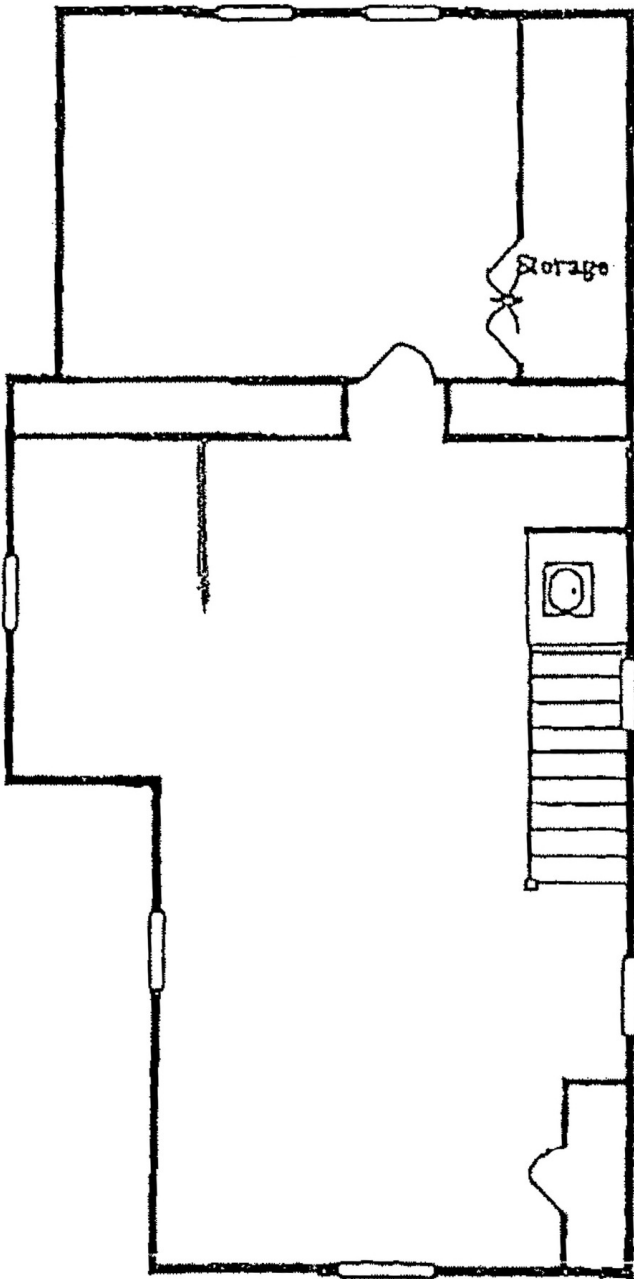
Haddonfield, NJ 08033

 FOR LEASE

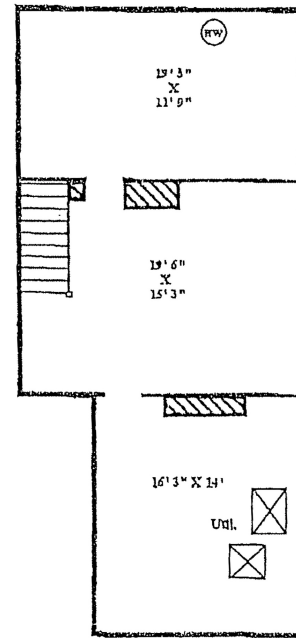
 OFFICE

 3,328 SF

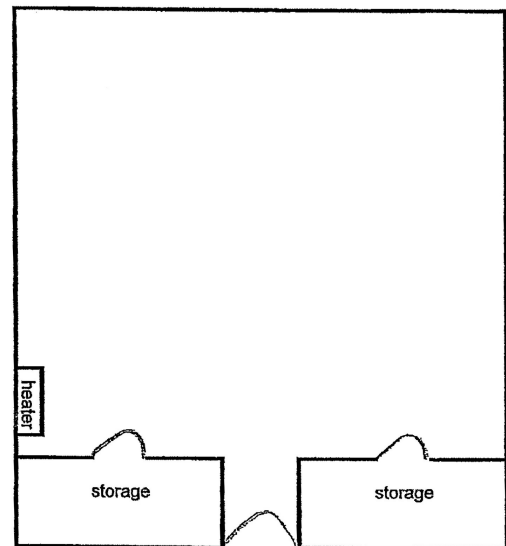
Third Floor
725 Square feet



Basement
800 Square Feet



Carriage House / Board Room
Square Feet
501.8



FOR MORE INFORMATION


Joe Riggs

 609.352.1162

 joe.riggs@naimertz.com

NAI MERTZ DISCLAIMER: NO WARRANTY OR REPRESENTATION, EXPRESS OR IMPLIED, IS MADE AS TO THE ACCURACY OF THE INFORMATION CONTAINED HEREIN, AND THE SAME IS SUBMITTED SUBJECT TO ERRORS, OMISSIONS, CHANGE OF PRICE, RENTAL OR OTHER CONDITIONS, PRIOR SALE, LEASE OR FINANCING, OR WITHDRAWAL WITHOUT NOTICE, AND OF ANY SPECIAL LISTING CONDITIONS IMPOSED BY OUR PRINCIPALS NO WARRANTIES OR REPRESENTATIONS ARE MADE AS TO THE CONDITION OF THE PROPERTY OR ANY HAZARDS CONTAINED THEREIN ARE ANY TO BE IMPLIED. OUTLINES ARE APPROXIMATE AND SHOWN ONLY TO IDENTIFY THE PARCEL IN CONSIDERATION.

NAIMertz

 NAI Mertz | 21 Roland Avenue
Mount Laurel, NJ 08054
856.234.9600 | www.naimertz.com



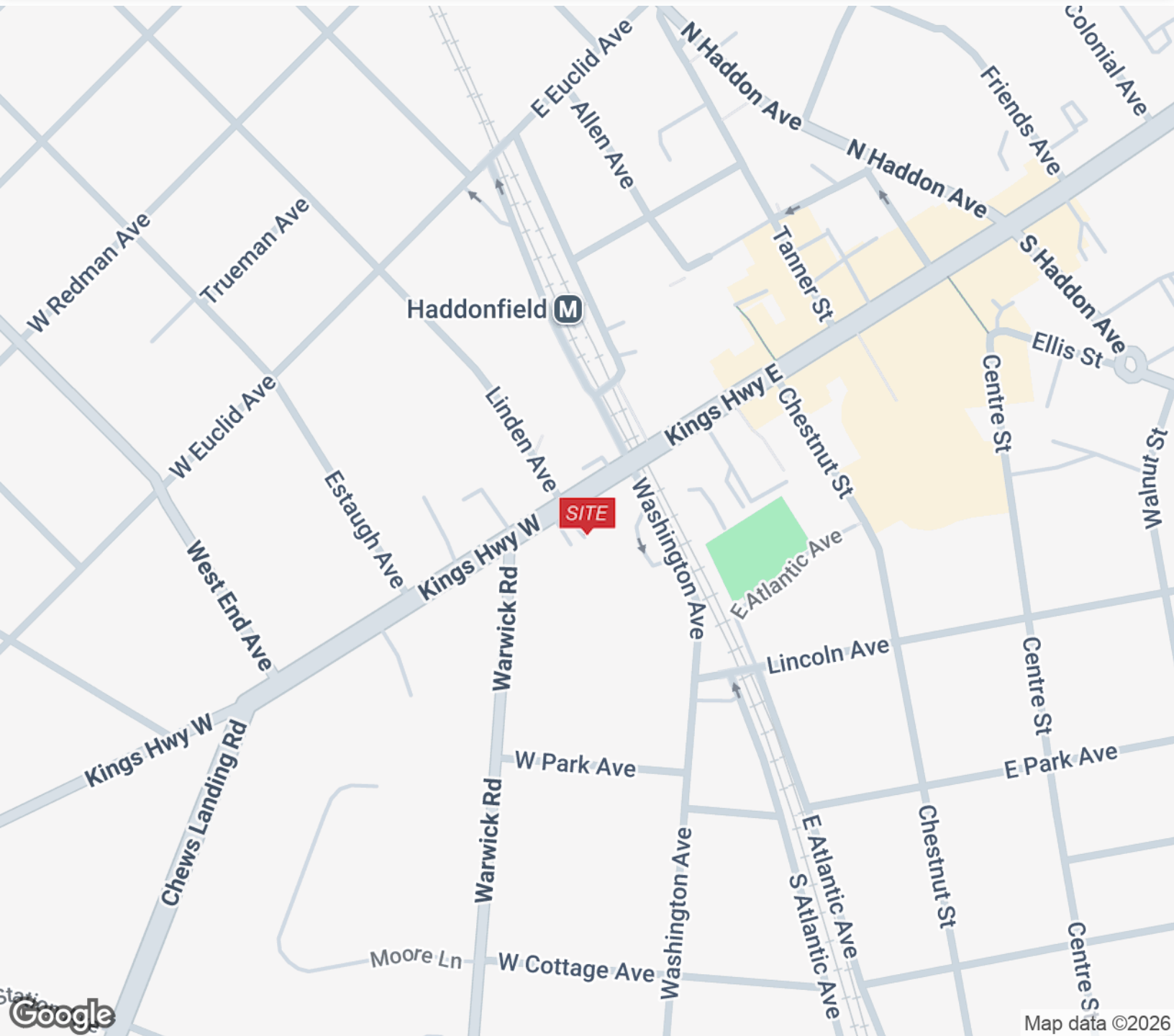
18 KINGS HIGHWAY WEST

Haddonfield, NJ 08033

 FOR LEASE

 OFFICE

 3,328 SF



FOR MORE INFORMATION


Joe Riggs

 609.352.1162

 joe.riggs@naimertz.com

NAI MERTZ DISCLAIMER: NO WARRANTY OR REPRESENTATION, EXPRESS OR IMPLIED, IS MADE AS TO THE ACCURACY OF THE INFORMATION CONTAINED HEREIN, AND THE SAME IS SUBMITTED SUBJECT TO ERRORS, OMISSIONS, CHANGE OF PRICE, RENTAL OR OTHER CONDITIONS, PRIOR SALE, LEASE OR FINANCING, OR WITHDRAWAL WITHOUT NOTICE, AND OF ANY SPECIAL LISTING CONDITIONS IMPOSED BY OUR PRINCIPALS NO WARRANTIES OR REPRESENTATIONS ARE MADE AS TO THE CONDITION OF THE PROPERTY OR ANY HAZARDS CONTAINED THEREIN ARE ANY TO BE IMPLIED. OUTLINES ARE APPROXIMATE AND SHOWN ONLY TO IDENTIFY THE PARCEL IN CONSIDERATION.

NAI Mertz

 NAI Mertz | 21 Roland Avenue
Mount Laurel, NJ 08054
856.234.9600 | www.naimertz.com



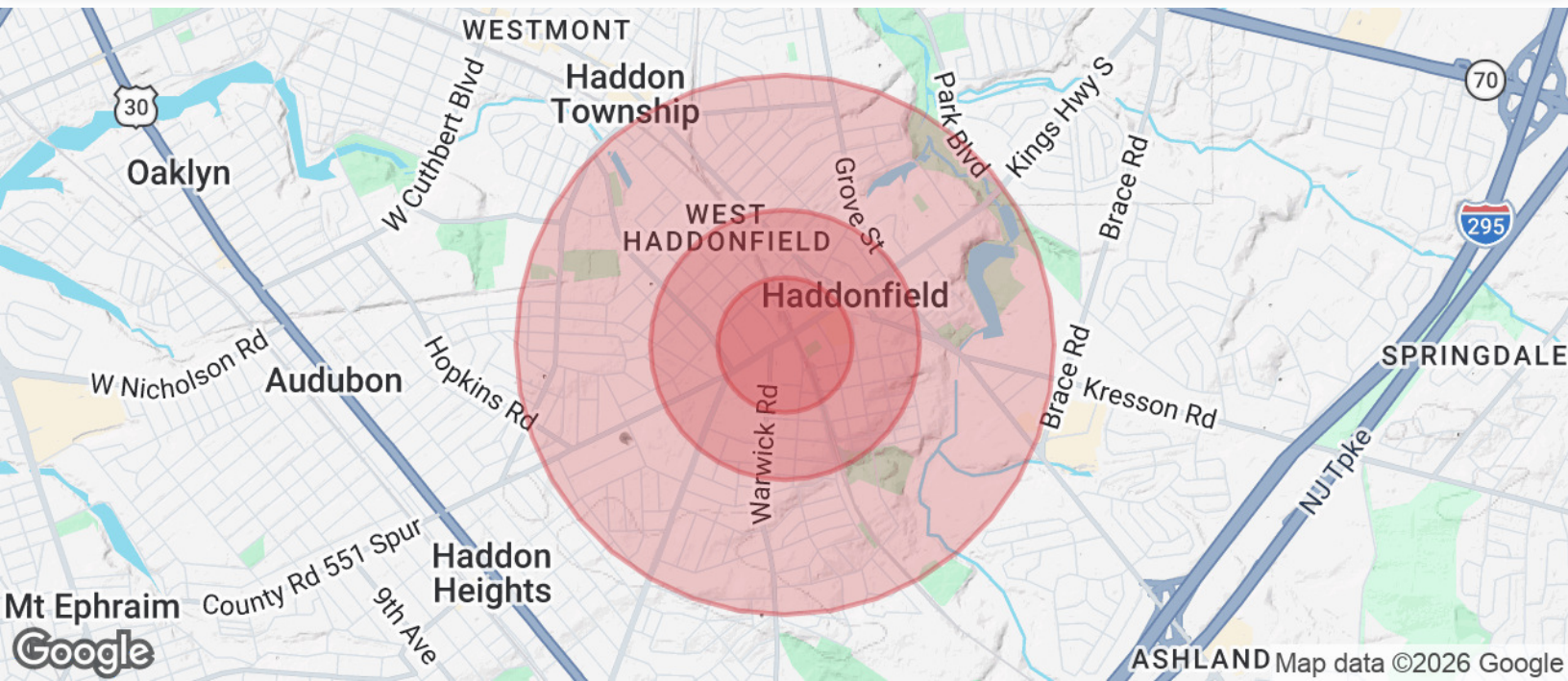
18 KINGS HIGHWAY WEST

Haddonfield, NJ 08033

 FOR LEASE

 OFFICE

 3,328 SF



| POPULATION | 0.25 MILES | 0.5 MILES | 1 MILE |
|----------------------|------------|-----------|--------|
| Total Population | 926 | 3,447 | 12,984 |
| Average Age | 40.5 | 40.9 | 42.8 |
| Average Age (Male) | 40.0 | 39.3 | 40.5 |
| Average Age (Female) | 41.3 | 41.8 | 44.2 |

| HOUSEHOLDS & INCOME | 0.25 MILES | 0.5 MILES | 1 MILE |
|---------------------|------------|-----------|-----------|
| Total Households | 367 | 1,312 | 5,295 |
| # of Persons per HH | 2.5 | 2.6 | 2.5 |
| Average HH Income | \$177,799 | \$188,982 | \$161,183 |
| Average House Value | \$544,310 | \$557,901 | \$479,314 |

* Demographic data derived from 2020 ACS - US Census

FOR MORE INFORMATION


Joe Riggs

 609.352.1162

 joe.riggs@naimertz.com

NAI MERTZ DISCLAIMER: NO WARRANTY OR REPRESENTATION, EXPRESS OR IMPLIED, IS MADE AS TO THE ACCURACY OF THE INFORMATION CONTAINED HEREIN, AND THE SAME IS SUBMITTED SUBJECT TO ERRORS, OMISSIONS, CHANGE OF PRICE, RENTAL OR OTHER CONDITIONS, PRIOR SALE, LEASE OR FINANCING, OR WITHDRAWAL WITHOUT NOTICE, AND OF ANY SPECIAL LISTING CONDITIONS IMPOSED BY OUR PRINCIPALS NO WARRANTIES OR REPRESENTATIONS ARE MADE AS TO THE CONDITION OF THE PROPERTY OR ANY HAZARDS CONTAINED THEREIN ARE ANY TO BE IMPLIED. OUTLINES ARE APPROXIMATE AND SHOWN ONLY TO IDENTIFY THE PARCEL IN CONSIDERATION.

NAI Mertz

 NAI Mertz | 21 Roland Avenue
Mount Laurel, NJ 08054

856.234.9600 | www.naimertz.com

