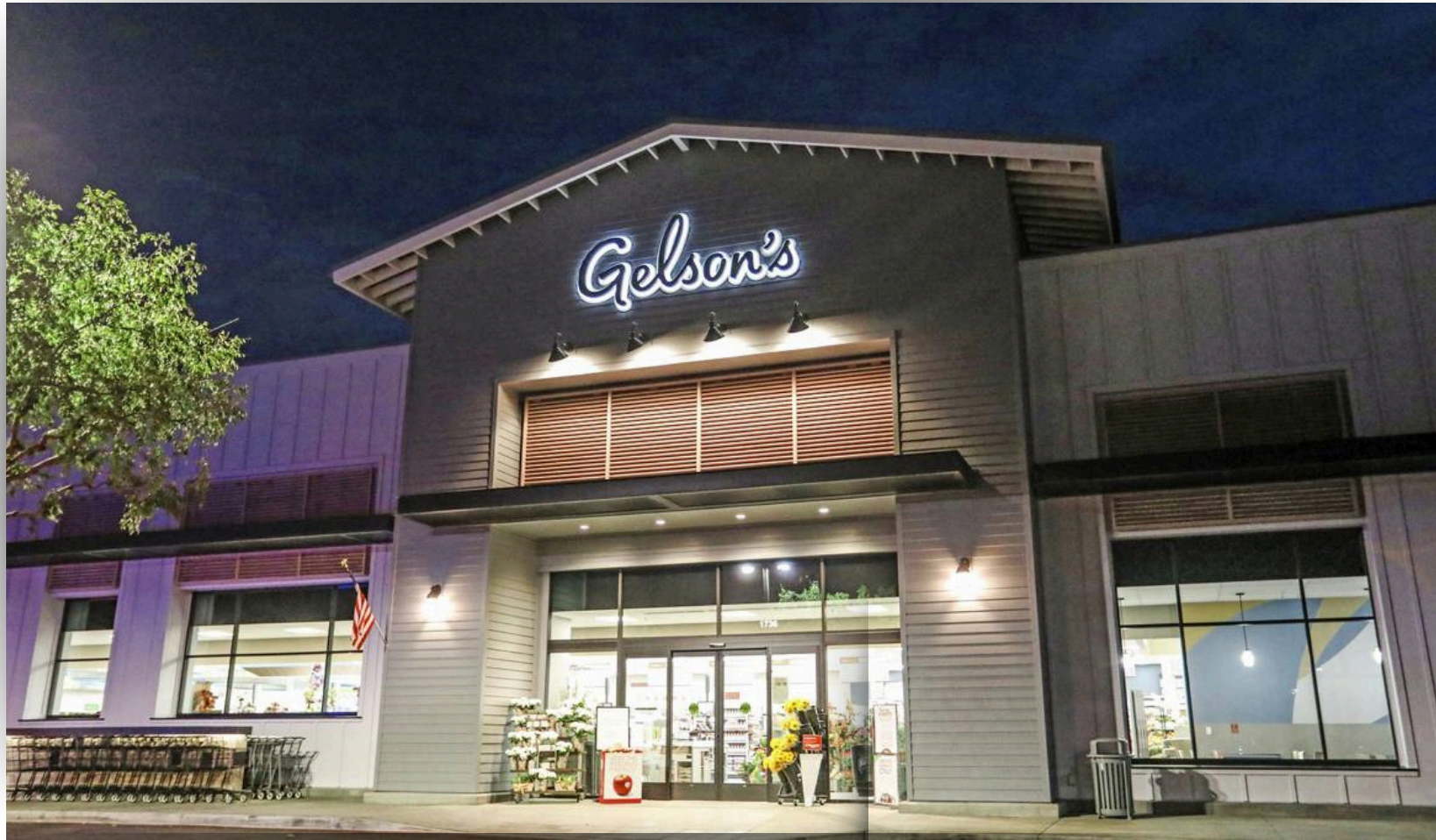


OAKBROOK PLAZA, THOUSAND OAKS



FOR LEASE

±600 - ±2,975 SF AVAILABLE



PROPERTY HIGHLIGHTS

- ▶ ±600 SF – ±2,975 SF in-line spaces available
- ▶ Approximately 2.9 Million Visits in the last 12 months (Placer.ai 2026)
- ▶ Gelson's anchored shopping center and shadow anchored by Ace Hardware, CVS, and Vons
- ▶ Centrally located within Conejo Valley Trade Area
- ▶ Immediately adjacent to 23 Freeway



Estimated Population

1 Mile	3 miles	5 Miles
11,666	75,060	153,410

Avg. Household Income

1 Mile	3 miles	5 Miles
\$188,121	\$173,581	\$186,680

Total Employees

1 Mile	3 miles	5 Miles
2,293	28,863	86,412

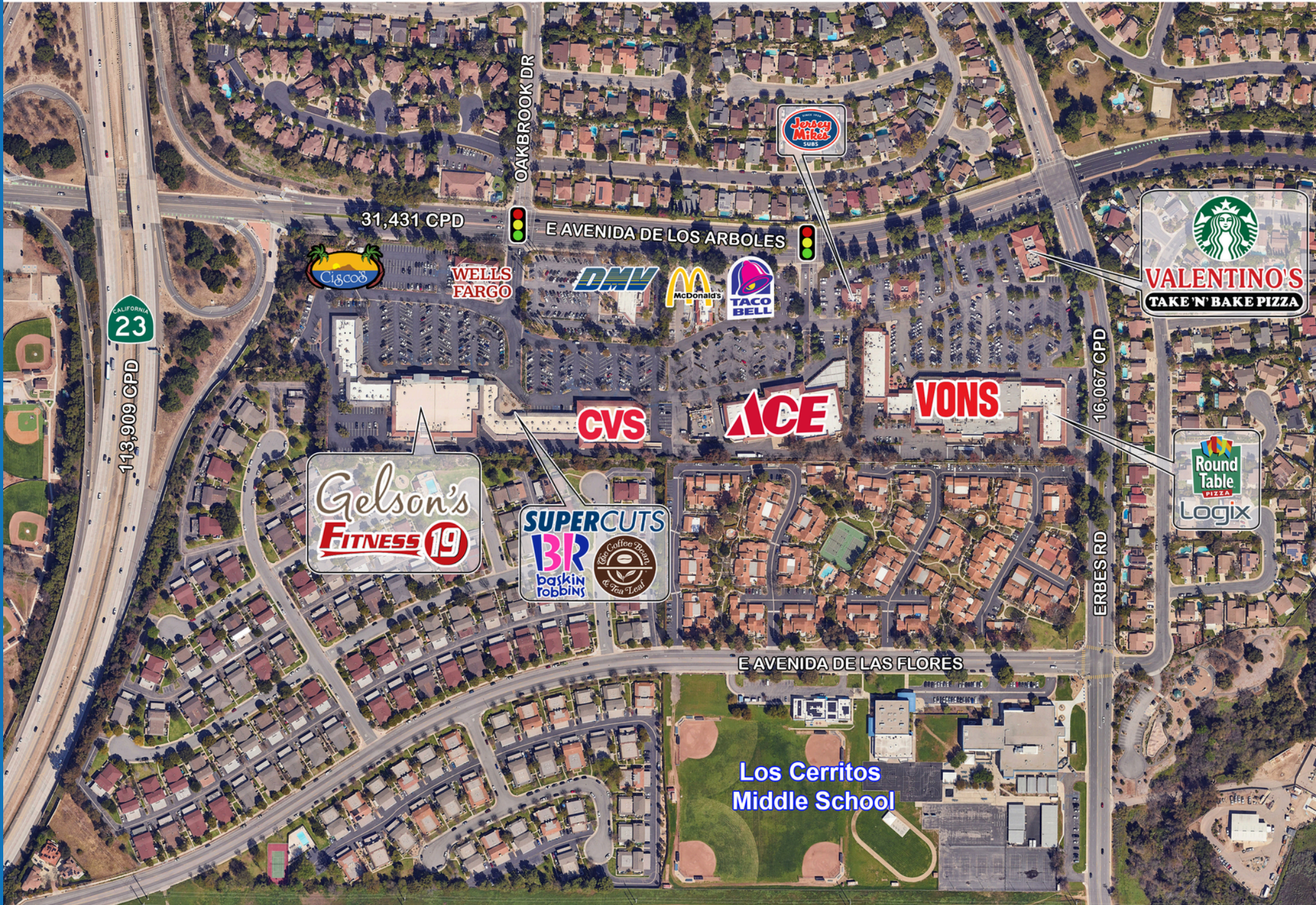
CO-TENANTS:



AREA RETAILERS:



SITE AERIAL



SITE PLAN



Tenant	Unit	SF
Gelson's Market	1	35,289
Fitness 19	2	8,553
Cafe Vivi	1724 A	3,696
Games Workshop	1724 D	900
Available	1724 D1	2,807
Ameci's Pizza & Pasta	1724 G1	3,060
CorePower Yoga	1730 AB	3,000
Available Soon (Do Not Disturb Tenant)	1730 C	1,026
Tifa Chocolate & Gelato	1730 D	1,213
Available	1730 E	1,575
Plaza Cleaners	1730 F	1,350
Coffee Bean & Tea Leaf	1772 A	1,400
Sole Soups	1772 B	800
Available	1772 C*	800
Available	1772 D*	600
Available	1772 E*	1,575
Animal Hospital	1772 F	2,000
LaserAway	1772 G	1,650
Supercuts	1772 H	1,250
JÜGO Bar	1772 I	900
Wateria	1772 J	900
Subway	1772 K	960
Club Pilates	1772 M	2,040
Jazzy Nails & Spa	1772 O	1,500
Baskin-Robbins	1772 P	1,500
European Wax Center	1772 Q	1,500
Available	1772 R	1,500



***Spaces 1772 C, 1772 D, & 1772 E can be combined for up to ≈2,975 SF**

CONTACT US



Matt Haas

Vice President

805.449.1804 ext.106

mhaas@cypressretail.net

License No. 01970296



Anna-Kay Earle

Associate Broker

805.449.1804 ext.107

earle@cypressretail.net

License No. 02241530

North Office

4035 E Thousand Oaks Blvd Suite 230
Westlake Village, CA 91362

www.cypress.net

The information provided herein is intended as a general depiction of the property and is subject to change. This information has been obtained by sources deemed reliable. The information has not been independently verified and Cypress Retail Group and its agents do not warrant or represent that the information provided is accurate. Individuals are solely responsible for verifying information related to the property and its suitability for the individual's use.

NORTH OFFICE

SOUTH OFFICE