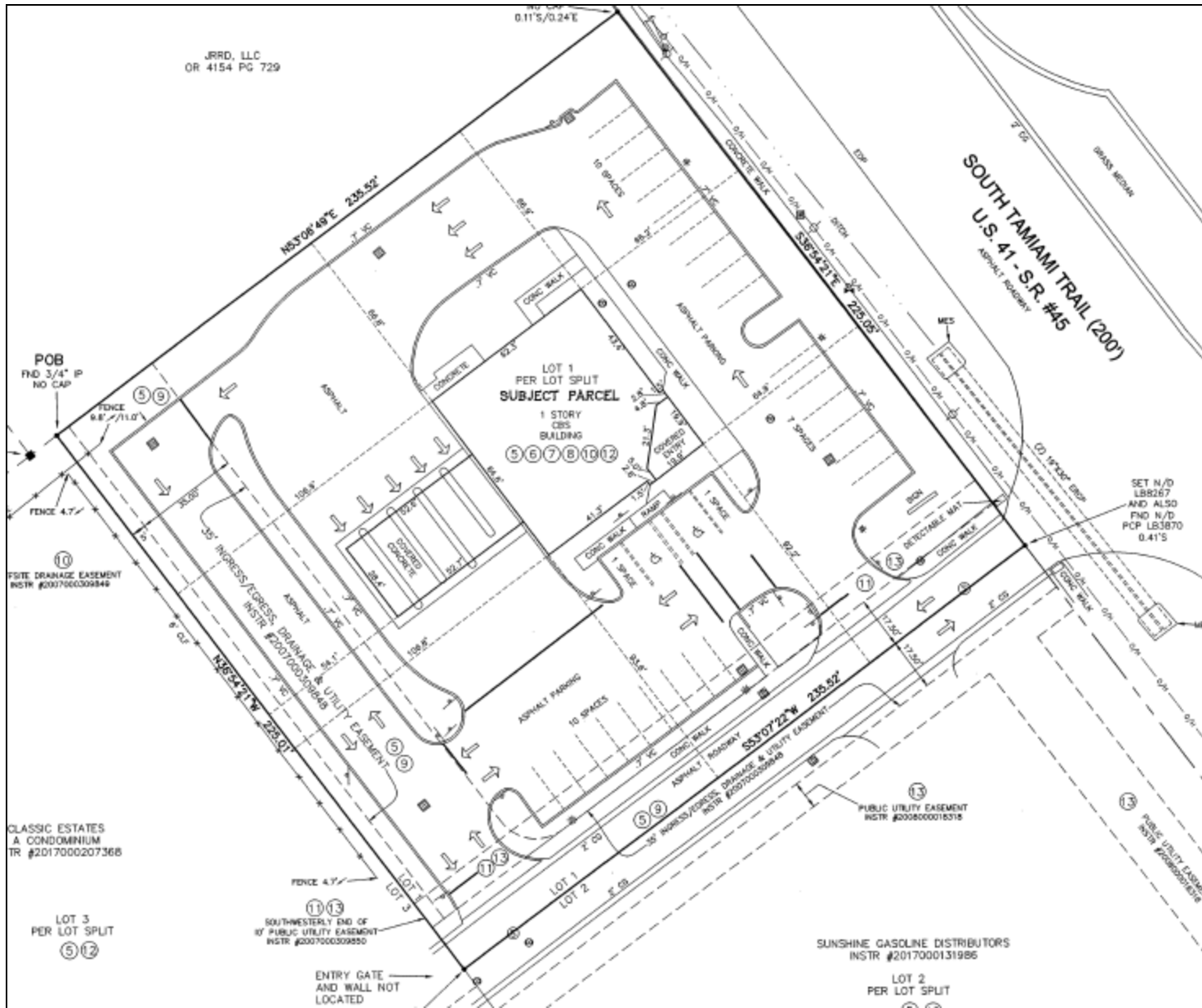


JRRD, LLC  
OR 4154 PG 729



CLASSIC ESTATES  
A CONDOMINIUM  
TR #2017000207368

LOT 3  
PER LOT SPLIT  
⑤ ⑫

⑪ ⑬  
SOUTHWESTERLY END OF  
10' PUBLIC UTILITY EASEMENT  
INSTR #2007000309850

ENTRY GATE  
AND WALL NOT  
LOCATED

SUNSHINE GASOLINE DISTRIBUTORS  
INSTR #2017000131985

LOT 2  
PER LOT SPLIT

SOUTH TAMMIAM TRAIL (200')  
U.S. 41 - S.R. #45  
ASPHALT HIGHWAY

SET N/D  
LBS267  
AND ALSO  
FND N/D  
PCP LBS3870  
0.41'S

⑬  
PUBLIC UTILITY EASEMENT  
INSTR #2008000015318

⑬  
PUBLIC UTILITY EASEMENT  
INSTR #2008000015318