

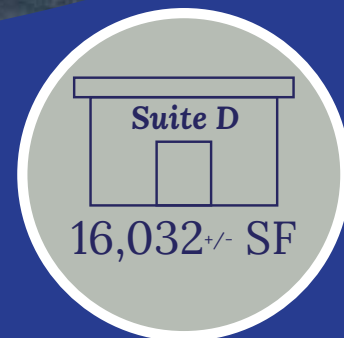


GOODWIN PROPERTY MANAGEMENT



981 Airway Court

Santa Rosa, CA 95403



Warehouse Space Available!



Convenient Highway Access

Located just minutes from Highway 101 for easy transportation and distribution.



Flexible Multi-Use Space

From wine or craft beverage production to warehouse and distribution, this space adapts seamlessly to your business needs.



Modified Gross Lease

Cost-efficient lease model with partial expense sharing.



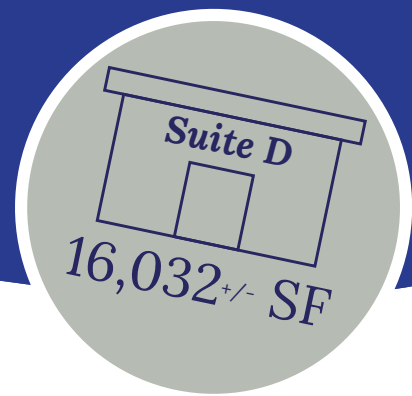
Valuable City of Santa Rosa Sewer Connection Credits

A major advantage for production operations. These rare credits are a valuable asset, not often available in similar properties.



981 Airway Court

Santa Rosa, CA 95403



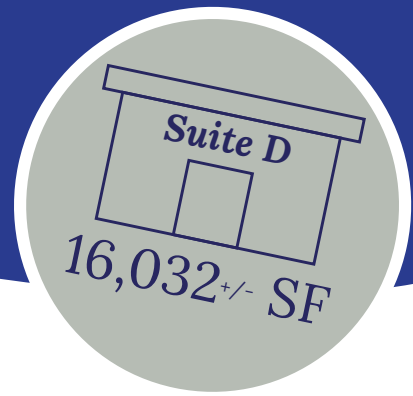
Property Highlights

- 16,032 SF Industrial Space (1st Floor)
- Two Loading Docks – fully accessible
- Two Grade-Level Roll-Up Doors
- Small Partitioned Office
- Private Restrooms
- Fully Insulated Interior
- Approx. 22 ft. Clear Height Ceilings
- One PG&E Electrical Meter – 480-volt, 3-phase, 200-amp service
- One PG&E Gas Meter
- Valuable City of Santa Rosa Sewer Connection Credits
- Tenant responsible for all utilities

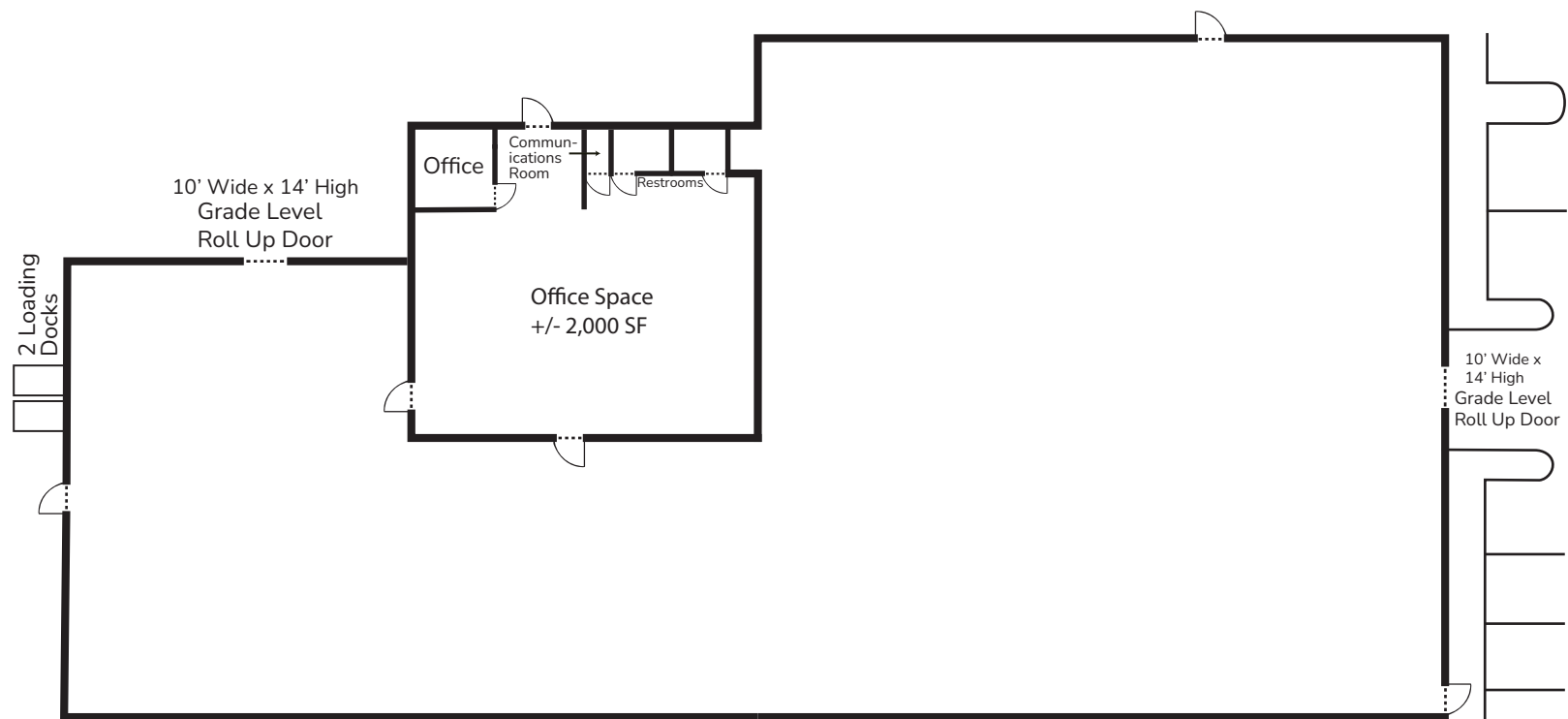


981 Airway Court

Santa Rosa, CA 95403



Floorplan



**Not drawn to scale*

981 Airway Court

Santa Rosa, CA 95403

Street Entrance



Aerial View

