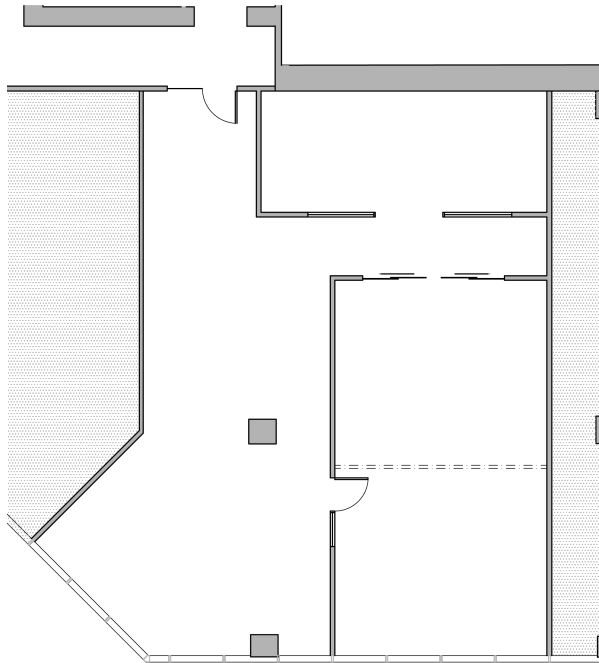


# | Unit 201B



**Rentable Area:** 2,219 SF  
**Availability:** Q3 2026

This space offers 3 private offices  
and an open area.



**LINDSAY KNOWLES**  
**SENIOR LEASING MANAGER**  
778.875.2946  
lknowles@warringtonpci.com

E. & O.E.: The information contained herein was obtained from sources which we deem reliable, and while thought to be correct, is not guaranteed by Warrington PCI Management.