

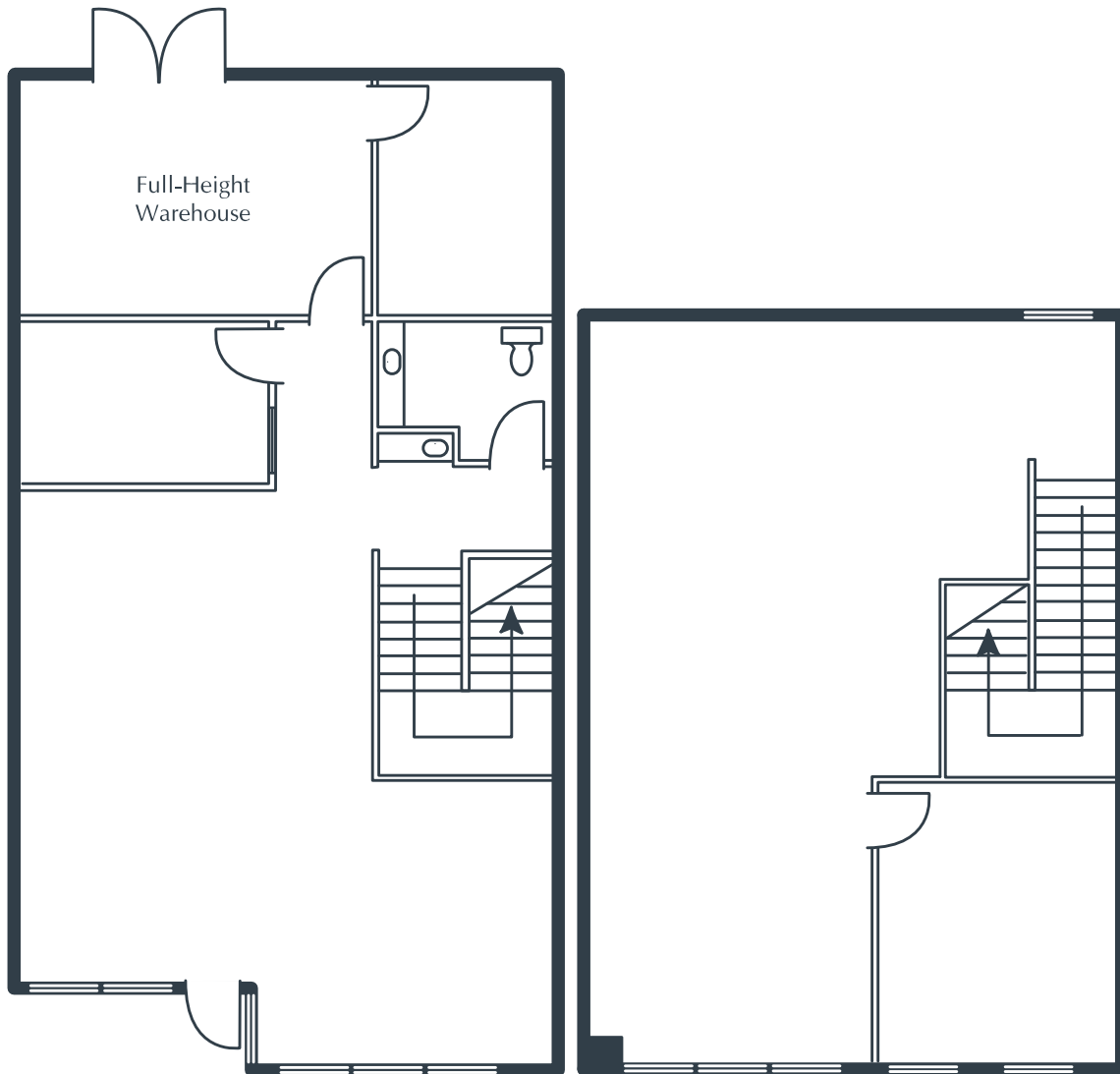
ORCHARD TECHNOLOGY PARK

9 Orchard Road, Suite 108
Lake Forest, CA

2,525 Square Feet

\$1.65 SF/MO

Triple Net



NOTES

- Reception
- Window Office
- 2 Interior Offices
- Restroom
- Coffee Bar
- 2 Large Open Work Areas
- Shipping/Receiving Doors
- Approximately 355 sq. ft. of Full-Height Warehouse
- Part of a Professionally Managed Business Park

Created by Olen Commercial Realty Corp., 2022.
Information is not to be published or copied without
written approval. Square footage and floor plans are
estimates and should be separately verified. All rates,
terms, floor plans, and building facts are subject to
change without notice.

ea 12.08.2022

ELLYSSA DERRY

Senior Leasing Director

949.719.7204

ederry@olen.com



Seven Corporate Plaza

Newport Beach, CA

949.644.6536

www.olen.com