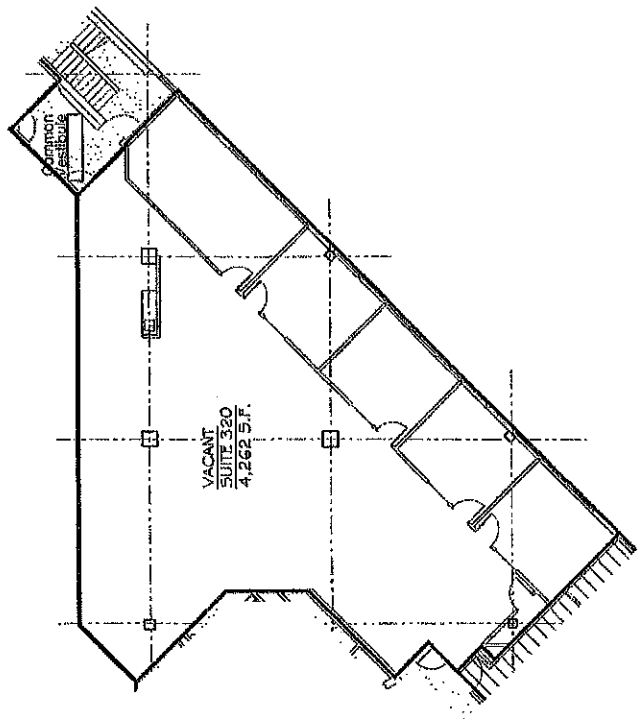


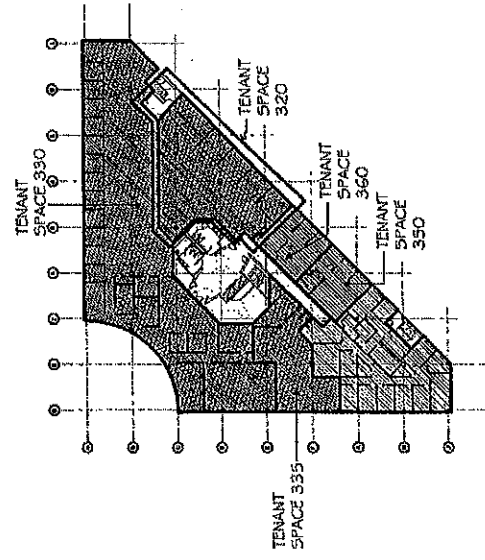
2025 3RD Floor Suite 320 4262 SQ FT

3RD Fl Suite 320



SUITE 320
1/16" = 1'-0"

2



KEY PLAN
1/64" = 1'-0"

- [Dotted pattern] = COMMON AREA
 - [Cross-hatch pattern] = OCCUPIED TENANT
 - [Diagonal lines] = VACANT
- NOTE:
ALL SQUARE FOOTAGE
NUMBERS ARE RENTABLE

ARCHITECTS
97 WEST 111 ST
NEW YORK, NY 10036
TEL: 212 512 2000
FAX: 212 512 2001

James E. DeBenedictis, AIA
Principal
12' 146' 00"

James A. Pardo, AIA, LEED AP
Principal
12' 146' 00"

James E. DeBenedictis, AIA
12' 146' 00"

James A. Pardo, AIA, LEED AP
12' 146' 00"

PROJECT No. 20-077 DATE: 06-05-2020 MKT-320

2025 LINCOLN HIGHWAY
EDISON, NEW JERSEY

SUITE 320 MARKETING PLAN