

FOR LEASE

220 E FORSYTH ST
JACKSONVILLE, FL 32202

PRICE: \$20/SF



Property Overview



AVAILABLE
1,266 - 1,500 SF



LOCATION:
DOWNTOWN JAX



2 OFFICE SUITES
AVAILABLE



CLASS C

Step into a piece of Downtown Jacksonville's history. Originally known as the Livery Building and designed by celebrated Jacksonville architect William Morgan, this distinctive two-story landmark offers professional office space with genuine historic character in the heart of downtown Jacksonville. Office suites are now available — 1,226 SF and 1,500 SF — offered on a full-service lease with parking included. Join established professionals including counseling, real estate, lighting, security, high-end tattoo artistry, and graphic design. Surrounded by downtown Jacksonville's growing restaurant and retail scene, the Livery Building places your business in one of the city's most walkable and vibrant corridors.



FOR LEASE

220 E FORSYTH ST, JACKSONVILLE, FL 32202

Property Highlights



LICENSED REAL ESTATE BROKER

- PROFESSIONAL OFFICE SUITES
- FULL SERVICE LEASE: UTILITIES & MAINTENANCE INCLUDED IN RENTAL RATE
- AVAILABLE SUITES:
 - SUITE E: 1,226 SF
 - SUITE B: 1,500 SF
 - NATURAL LIGHT
- ON SITE PARKING INCLUDED
- SECURITY ON PREMISES
- SECURE KEY FOB ACCESS
- YATES BUILDING, BLACKSTONE BUILDING, JAX CHAMBER, SPORTS & ENTERTAINMENT FACILITIES, FLORIDA THEATRE, ONE INDEPENDENT BUILDING, VYSTAR BUILDING, DINING & RETAIL NEARBY



FOR LEASE

220 E FORSYTH ST, JACKSONVILLE, FL 32202

Aerial Map

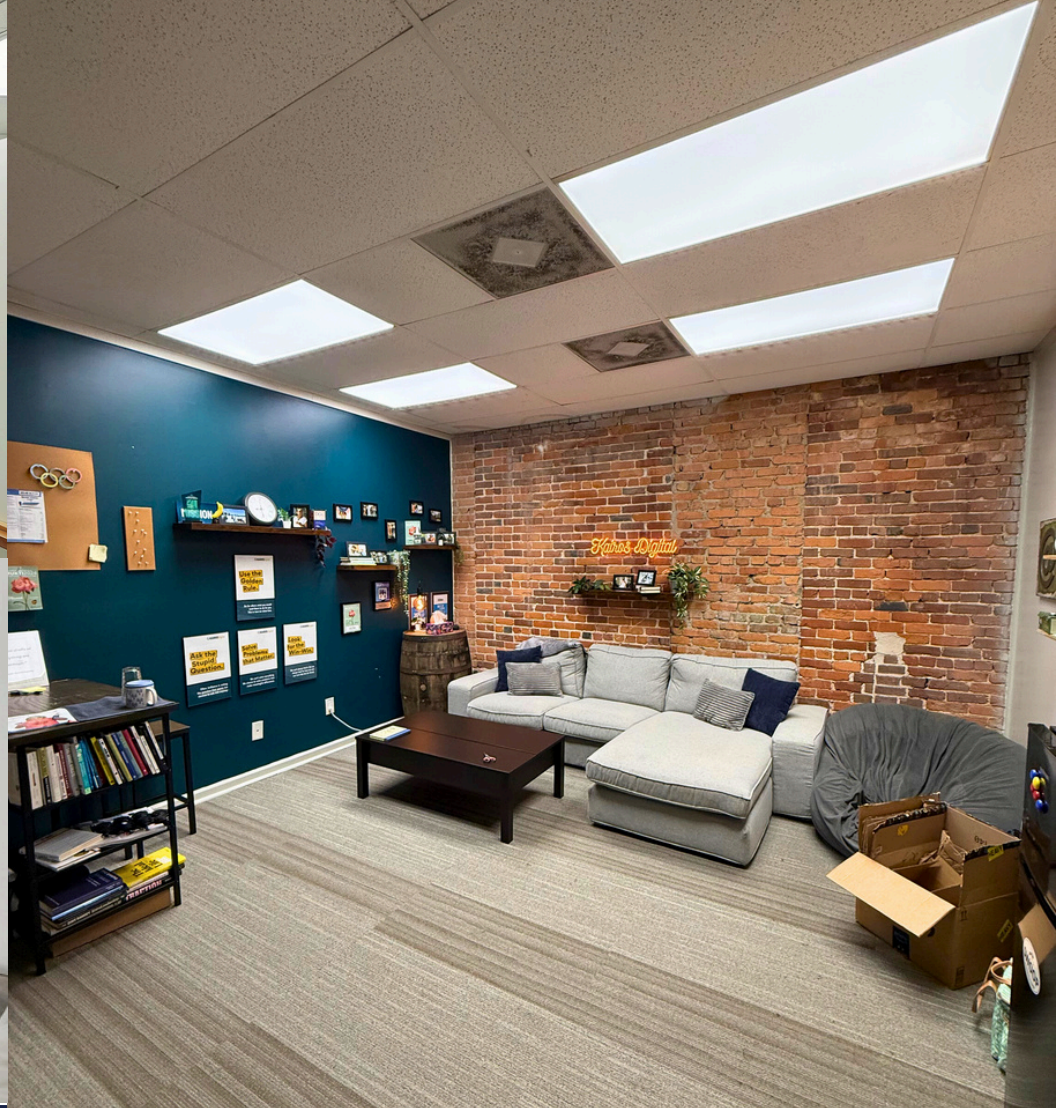


LICENSED REAL ESTATE BROKER



FOR LEASE

220 E FORSYTH ST, JACKSONVILLE, FL 32202



ELIAS HIONIDES
O. 904.241.1151
C. 904.894.6620
ehionides@petrajax.com

GET IN TOUCH



ASHLEIGH SHIM
O. 904.241.1151
C. 904.962.2655
ashleigh@petrajax.com

DISCLAIMER: THIS FLYER HAS BEEN PREPARED BY PETRA MANAGEMENT, INC. FOR MARKETING AND INFORMATIONAL PURPOSES ONLY. PETRA MANAGEMENT, INC. MAKES NO REPRESENTATIONS, WARRANTIES, OR GUARANTEES, EXPRESS OR IMPLIED, AS TO THE ACCURACY, COMPLETENESS, OR RELIABILITY OF THE INFORMATION PROVIDED HEREIN. INTERESTED PARTIES ARE ENCOURAGED TO CONDUCT THEIR OWN INDEPENDENT INVESTIGATION TO VERIFY ALL DETAILS. PETRA MANAGEMENT, INC. EXPRESSLY DISCLAIMS ANY AND ALL LIABILITY FOR ERRORS, OMISSIONS, OR ANY LOSS OR DAMAGES RESULTING FROM RELIANCE ON THIS MATERIAL. THIS DOCUMENT IS THE COPYRIGHTED PROPERTY OF PETRA MANAGEMENT, INC. ©2025. ALL RIGHTS RESERVED. THIS COMMUNICATION IS NOT INTENDED TO SOLICIT OR INDUCE THE BREACH OF ANY EXISTING AGREEMENTS.