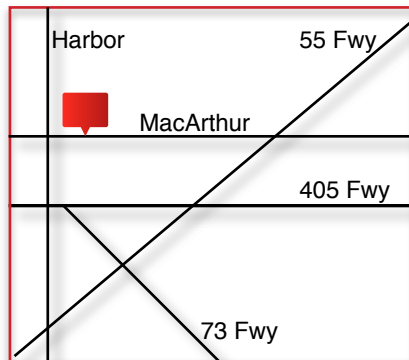


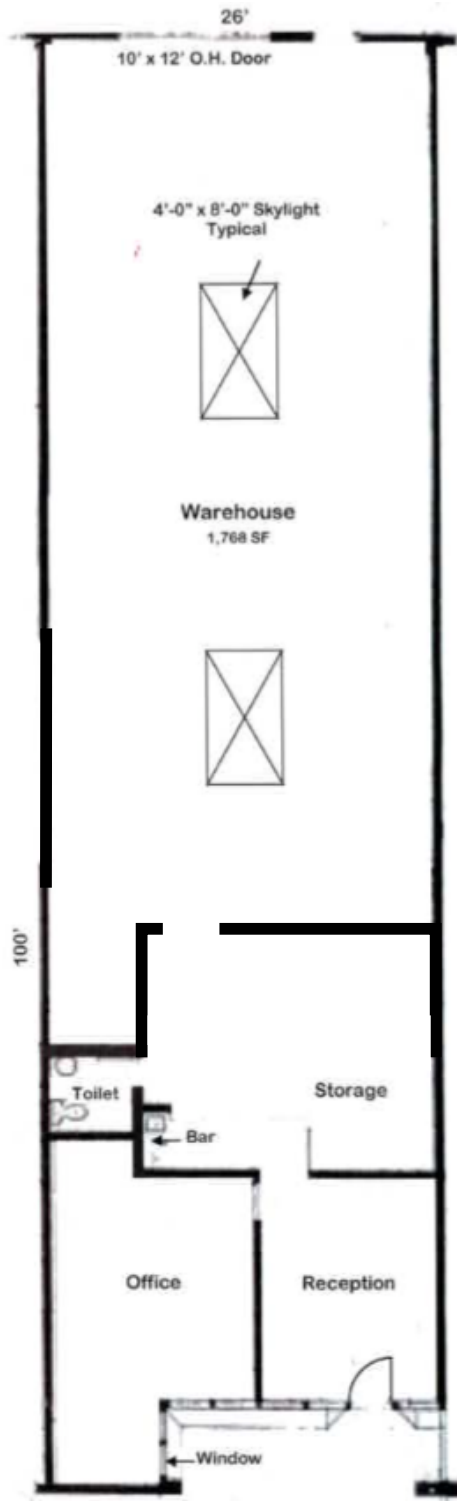
3409 W MACARTHUR BLVD SANTA ANA, CA

- 2,600 SQUARE FEET
- INDUSTRIAL UNIT
- MAJOR STREET FRONTAGE
- NEWLY REFURBISHED CENTER
- EXCELLENT TRUCK ACCESS

AVAILABLE FOR LEASE

Exclusively Listed by >
Jordan De Meis (lic# 01312030) & Jim Burrus (lic# 00596156)
www.SWCRE.com
jdemeis@swcre.com | jburrus@swcre.com





Floor Plan

3409 W. Mac Arthur Blvd.

CONTACT >

Jordan De Meis JDMEIS@SWCRE.COM | 714-745-6297 CELL

www.SWCRE.com

No warranties or representations are made to the information provided in this brochure and floor plan. Availability, rental rate, measurements, terms and conditions are subject to change without notice.