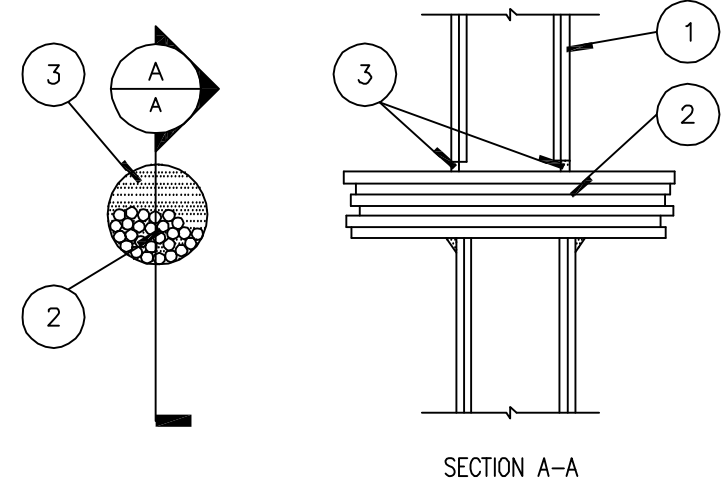


UL FIRESTOP SYSTEMS

System No. W-L-3110  
F Rating - 1 AND 2 HR  
T Rating - 0 Hr



- Wall Assembly - The 1 or 2 hr. fire rated gypsum wallboard/stud wall assembly shall be constructed of the materials and in the manner specified for the fire rating specified:
  - Studs - Wall framing may consist of either wood studs or steel channel studs. Wood studs to consist of nom. 2 by 4 in. lumber spaced at 16 in. O.C. Steel studs to be min. 3/8 in. wide and spaced max. 24 in. O.C.
  - Wallboard, Gypsum - Thickness, type, number of layers and fasteners as required in the individual Wall and Partition Design. Max. diameter of opening is 4 1/2 in.
- Cables - Max. 4 in. diameter light bundle of cables installed eccentrically or concentrically in opening. The annular space between the bundled cables and periphery of the opening to be min. 0 in. (point contact) to a max. 1/2 in. Cables may or may not be routed through flexible steel conduit with or without vinyl coating. Cables to be rigidly supported on both sides of wall assembly. Any combination of the following types and sizes of cables may be used:
  - Max. 150 pair No. 24 AWG (or smaller) copper conductor with polyvinyl chloride (PVC) insulation and jacket.
  - Max. 1/C 350 kcmil (or smaller) copper conductor cable with cross-linked polyethylene (XLPE) jacket.
  - Max. 3/C No. 2/0 AWG (or smaller) aluminum or copper conductor cable with XLPE insulation and PVC jacket.
  - Max. 7/C No. 12 AWG (or smaller) copper conductor cable with PVC insulation and jacket.
  - Max. 18 AWG RG 6/U coaxial cable with PVC insulation and jacket.
  - Max. 3/C with ground No. 12 AWG (or smaller) NM cable with PVC insulation and jacket.
  - Through Penetrating Product - Max. 3/C No. 2 AWG (or smaller) aluminum or steel clad Armored Cable or aluminum or steel clad Metal Clad Cable with copper conductors. (ALFEX CORP)
- Fill, Void or Cavity Materials - Caulk - Min. 3/8 in. thickness of fill material applied into annulus, flush with each surface of wall. Min. 3/8 in. thickness of fill material applied into interstices of cables on both sides of wall. CAULKING TO COMPLY WITH UL 1479.

**Bundled Wire Penetration Detail**

Scale: 1/2" = 1'-0"

1  
A2

PLUMBING FIXTURE REQUIREMENTS : FLORIDA PLUMBING CODE 2010 (TABLE 403.1)														
OCCUPANCY CLASSIFICATION	OCCUPANCY LOAD	FIXTURE REQUIREMENT					FIXTURE PROVIDED							
		WATERCLOSETS		LAVATORIES		MOP SINK	WATERCLOSETS		URINALS	LAVATORIES		MOP SINK		
		FEMALE	MALE	FEMALE	MALE		FEMALE	MALE	NOT TO EXCEED THE TOTAL WATERCLOSET REQUIREMENT	FEMALE	MALE			
GROUP B OFFICE	22	1		1		1		1			1			N/A

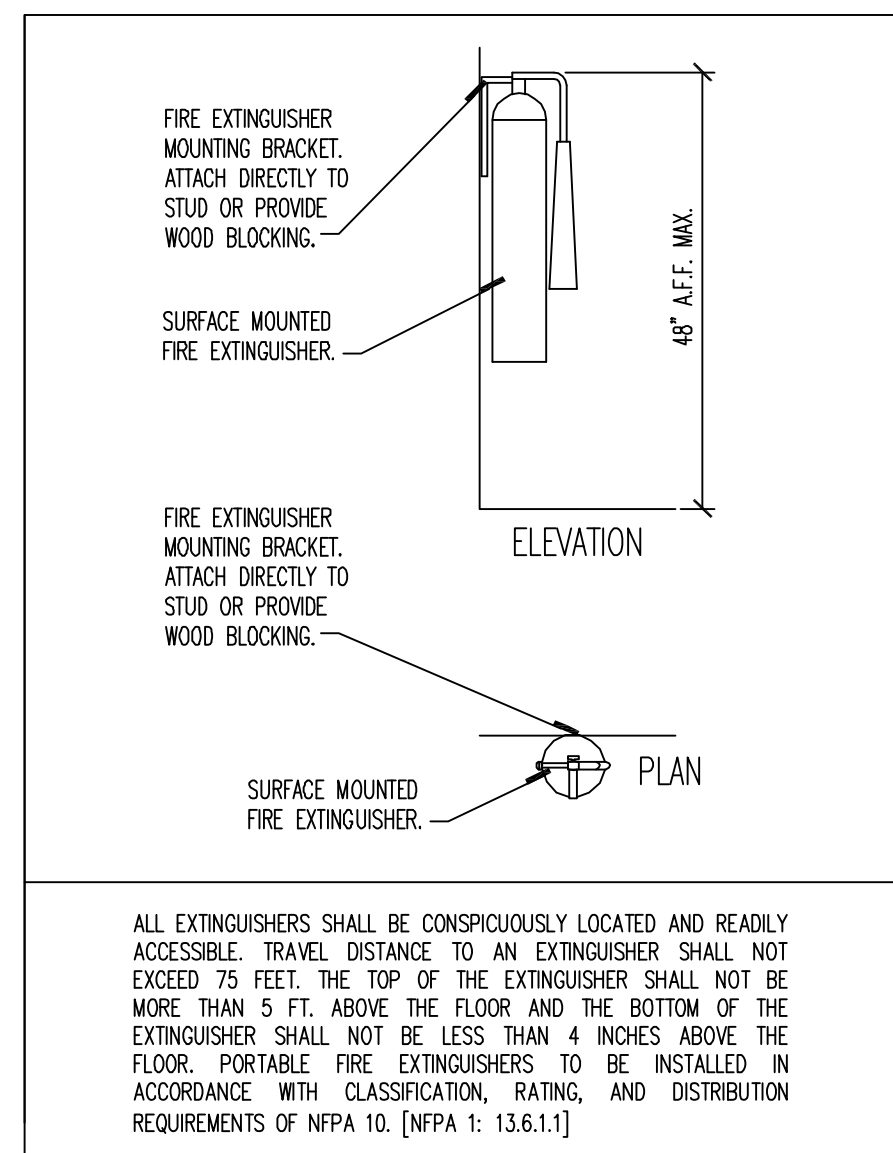
OCCUPANCY LOAD : FLORIDA BUILDING CODE 2010 (FBC, EXISTING), (FFPC 2010 / NFPA 101, LSC, 2009)  
FFPC - LSC 43.1.1 and 43.1.2  
CLASSIFICATION OF WORK: (3) MODIFICATION  
FBC/FPC CHAPTER 4  
CLASSIFICATION OF WORK 404 - ALTERATION LEVEL 1

OCCUPANCY CLASSIFICATION	OCCUPANCY SUB-CLASSIFICATION	AREA	OCCUPANCY LOAD FACTOR	OCCUPANCY LOAD	MINIMUM REQUIRED EGRESS	EGRESS REQUIRED		EGRESS PROVIDED		EXIT SEPARATION	
						STAIRS	HORIZONTAL	STAIRS	HORIZONTAL	REQUIRED	PROVIDED
GROUP B OFFICE		2,240 SF	1 / 100	1 / 100	2 EXIT LOCATIONS	NA	8.0"	NA	< 100"	NA	NA

**CODE ANALYSIS: FLORIDA BUILDING CODE 2010 (FBC, EXISTING), (FFPC 2010 / NFPA 101, LSC, 2009)**

CONSTRUCTION TYPE	SPRINKLER SYSTEM	FIRE ALARM SYSTEM	FIRE EXTINGUISHER REQUIREMENT	FIRE RATING										EXISTING BUILDING CODE	NUMBER OF STORIES	BUILDING HEIGHT	BUILDING TYPE		
				STRUCTURAL FRAME	BEARING WALLS EXTERIOR	BEARING WALLS INTERIOR	NONBEARING WALLS	FLOOR/CEILING	ROOF/CEILING	STAIR ENCLOSURES	TENANT SEPARATION								
II B	YES	NO	1	1	1	1	0	NA	1	NA	NA	NORTH	EAST	SOUTH	WEST	LEVEL I ALTERATION	1	15'-8"	COMMERCIAL MULTI-TENANT RETAIL

EXIT SYMBOL	EGRESS LOCATIONS	MEANS OF EGRESS				FINISH CLASSIFICATIONS				BUILDING AREA			
		TRAVEL DISTANCE	COMMON PATH OF TRAVEL	DEAD END	DOOR WIDTHS	EXITS	EXIT ACCESS CORRIDORS	OTHER SPACES					
NA	1, 2	150' (150')	50'-8" (75/75')	14'-1" (20/20')	4'-" (32")	34"	32"	34"	A, B OR C TYPE I OR II	A, B OR C TYPE I OR II	A, B OR C	NC NA UNR NR EXST	NON-COMBUSTIBLE NOT APPLICABLE UNRESTRAINED NO REQUIREMENT EXISTING



**Wall Mounted Fire Extinguisher Detail**

Scale: 1/2" = 1'-0"

2  
A1

**LIFE SAFETY PLAN NOTES**

- IN EVERY GROUP OCCUPANCY ALL MATERIALS ARE TO CONFORM WITH THE LIFE SAFETY STANDARDS LISTED ON THE FINISH SCHEDULE.
- ANYTIME THE BUILDING IS OCCUPIED, THE MEANS OF EGRESS SHALL BE ILLUMINATED AT AN INTENSITY OF NOT LESS THAN 1 FOOT-CANDLE ALL THE WAY OUT TO THE PUBLIC WAY. NOTE THIS SHALL INCLUDE OUTSIDE LIGHTING, SUCH AS TERRACES AND STAIRWELLS.
- ADDITIONAL EXIT SIGNS AND EMERGENCY LIGHTING MAY BE REQUIRED PRIOR TO FINAL INSPECTION FOR OCCUPANCY. A PRELIMINARY WALK-THROUGH INSPECTION IS RECOMMENDED.
- MAXIMUM OCCUPANT LOAD SIGNS SHALL BE POSTED IN ALL DINING AND SEATING AREAS.
- ADDRESS IDENTIFICATION NUMBERS TO BE MINIMUM OF 6" IN HEIGHT AND LOCATED IN A CONSPICUOUS AREA IN STRICT ACCORDANCE WITH APPROVED SIGN CRITERIA FOR ALL EXTERIOR EGRESS DOORS OF THE SPACE.
- THE CONTRACTOR IS TO VERIFY EXISTING 1-HOUR FIRE RATED PARTITIONS TO REMAIN, REPAIR FIRE RATED PARTITION AS NEEDED AND ENSURE ALL PENETRATIONS ARE SEALED PROPERLY TO MAINTAIN FIRE RATING. CONTRACTOR IS TO LOCATE OR INSCRIBE 4" HIGH STENCILING TO STATE "1-HOUR FIRE RATED WALL. PROTECT ALL OPENINGS".
- REFER TO THE FLOOR PLAN FOR FIRE RATED WALLS AND PARTITIONS.
- A REDUCED PLAN SHALL BE PROVIDED TO THE FIRE INSPECTOR AT THE TIME OF FINAL INSPECTION, AND A LEGIBLE COPY SHALL BE POSTED NEAR THE MAXIMUM CAPACITY SIGN.
- THE SUITABILITY, DISTRIBUTION, AND MAINTENANCE OF EXTINGUISHERS SHALL BE IN ACCORDANCE WITH NFPA 10, STANDARD FOR PORTABLE FIRE EXTINGUISHERS.
- STORAGE OF FLAMMABLE AND COMBUSTIBLE LIQUIDS SHALL BE IN ACCORDANCE WITH NFPA 30, FLAMMABLE AND COMBUSTIBLE CODE, EXCEPT THAT STORAGE OF CLASS I AND II LIQUIDS SHALL NOT EXCEED 60 GAL (227L) WITHIN 50 FT (15M) OF THE STRUCTURE.
- STORAGE AREAS SHALL BE KEPT FREE OF DEBRIS AND COMBUSTIBLE MATERIALS NOT NECESSARY TO THE STORAGE.
- OPEN FLAMES AND SMOKING SHALL NOT BE PERMITTED IN FLAMMABLE AND COMBUSTIBLE LIQUIDS STORAGE AREAS. SUCH STORAGE AREAS SHALL BE APPROPRIATELY POSTED AS "NO SMOKING" AREAS.
- CLASS I AND II LIQUIDS SHALL BE KEPT IN APPROVED SAFETY CONTAINERS.
- CLASS I LIQUIDS SHALL BE DISPENSED ONLY WHERE THERE ARE NO OPEN FLAMES OR OTHER SOURCES OF IGNITION WITHIN THE POSSIBLE PATH OF VAPOR TRAVEL.
- DURING THE ENTIRE PERIOD OF DEMOLITION AND CONSTRUCTION, ALL EXISTING EXITS, EXIT LIGHTING, FIRE PROTECTION DEVICES, FIRE SPRINKLERS AND FIRE ALARM SYSTEMS SHALL BE CONTINUOUSLY MAINTAINED AS PRACTICAL TO COMPLETE THE WORK OUTLINED IN THESE DOCUMENTS.

1018.4 DEAD ENDS, WHERE MORE THAN ONE EXIT OR EXIT ACCESS DOORWAY IS REQUIRED, THE EXIT ACCESS SHALL BE ARRANGED SUCH THAT THERE ARE NO DEAD ENDS IN CORRIDORS MORE THAN 20 FEET (6096 MM) IN LENGTH.

EXCEPTION:  
2. IN OCCUPANCIES IN GROUPS B, E, F, I, M, R-1, R-2, P-4, S AND U, WHERE THE BUILDING IS EQUIPPED THROUGHOUT WITH AN AUTOMATIC SPRINKLER SYSTEM IN ACCORDANCE WITH SECTION 903.3.1.1, THE LENGTH OF THE DEAD-END CORRIDORS SHALL NOT EXCEED 50 FEET (15 240 MM).

**LIFE SAFETY LEGEND**

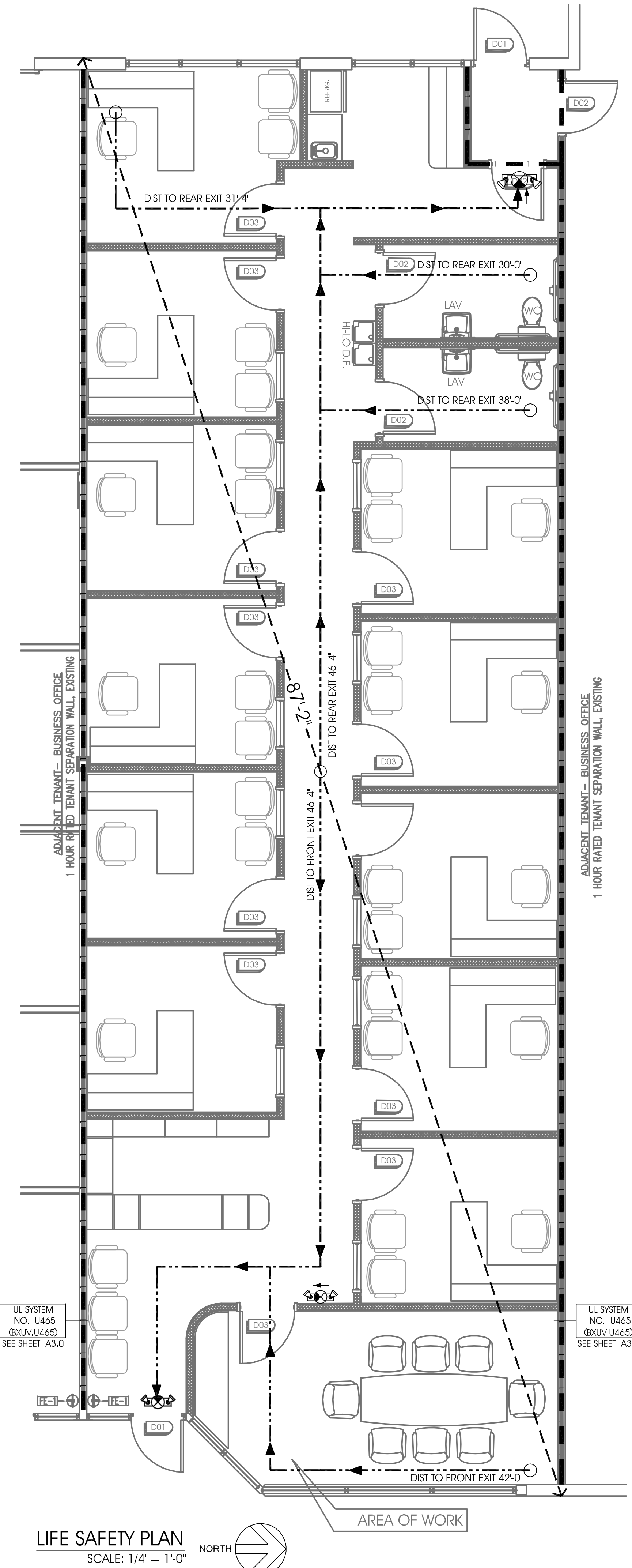
SYMBOL	DESCRIPTION
←	DIRECTION OF TRAVEL
---	TRAVEL PATH
---	DIAGONAL DISTANCE
---	1 HOUR RATED TENANT SEPARATION WALL
⊗	LIGHTED EXIT SIGN: SINGLE SIDED, FROM SINGLE DIRECTION W/BATTERY BACKUP.
⊗	LIGHTED EXIT SIGN & DUAL EXIT LIGHTING COMBO: SINGLE AND OR DUAL DIRECTION, W/BATTERY BACKUP.
⊗	EMERGENCY EXIT LIGHTING: WALL MOUNT W/BATTERY BACK-UP.

**GENERAL NOTES**

THE MINIMUM FLAME SPREAD CLASSIFICATION OF INTERIOR FINISHES SHALL BE:  
FOR EXITS AND EXIT ACCESS CLASS B  
FOR ALL OTHER AREAS CLASS C

**KEYED NOTES**

2A 208C SURFACE MOUNTED FIRE EXTINGUISHER MOUNT TOP AT 48" A.F.F.



**LIFE SAFETY PLAN**

SCALE: 1/4" = 1'-0"



steve hepner  
architect  
email: shepner@att.net  
TEL. 407.422.1999  
FAX. 1.866.863.4395

AR 010620  
CREATIVE FORMWORKS  
architecture  
planning · design  
2856 W. Fairbanks Ave.  
Winter Park, FL 32789

r. casey nelson  
project manager / designer  
email: casey@creative1design.com  
TEL. 407.415.3201  
FAX. 1.866.381.4531

NOTICE OF COPYRIGHT: THESE DRAWINGS AND SPECIFICATIONS, IDEAS, DESIGNS AND ARRANGEMENTS REPRESENTED THEREBY ARE AND SHALL REMAIN THE PROPERTY OF THE DESIGNER, AND NO PART THEREOF SHALL BE COPIED, DISCLOSED TO OTHERS OR USED IN CONNECTION WITH ANY WORK OR PROJECT OTHER THAN THE SPECIFIED PROJECT FOR WHICH THEY HAVE BEEN PREPARED AND DEVELOPED WITHOUT THE WRITTEN CONSENT OF THE DESIGNER. VISUAL CONTACT WITH THESE PLANS OR SPECIFICATIONS SHALL CONSTITUTE CONCLUSIVE EVIDENCE OF ACCEPTANCE OF THESE RESTRICTIONS. WRITTEN DIMENSIONS ON THESE DRAWINGS SHALL HAVE PRECEDENCE OVER SCALED DIMENSIONS. CONTRACTOR SHALL VERIFY AND BE RESPONSIBLE FOR ALL DIMENSIONS AND CONDITIONS ON THE JOB AND THIS OFFICE MUST BE NOTIFIED OF ANY VARIATIONS FROM THE DIMENSIONS AND CONDITIONS SHOWN BY THESE DRAWINGS. SHOP DETAILS MUST BE SUBMITTED TO THIS OFFICE FOR APPROVAL BEFORE PROCEEDING WITH FABRICATION.

**INTERIOR BUILDOUT OF OFFICE SPACE**  
AT OSP II BUSINESS CENTER  
7350 Futures Drive - Unit 14  
Orlando, FL 32819

OCCUPANCY LOADS  
LIFE SAFETY PLAN  
NOTES & LEGEND

**A0**  
SHEET NUMBER