

**16782 Von Karman
Avenue - Unit 14
Irvine, CA 92606**

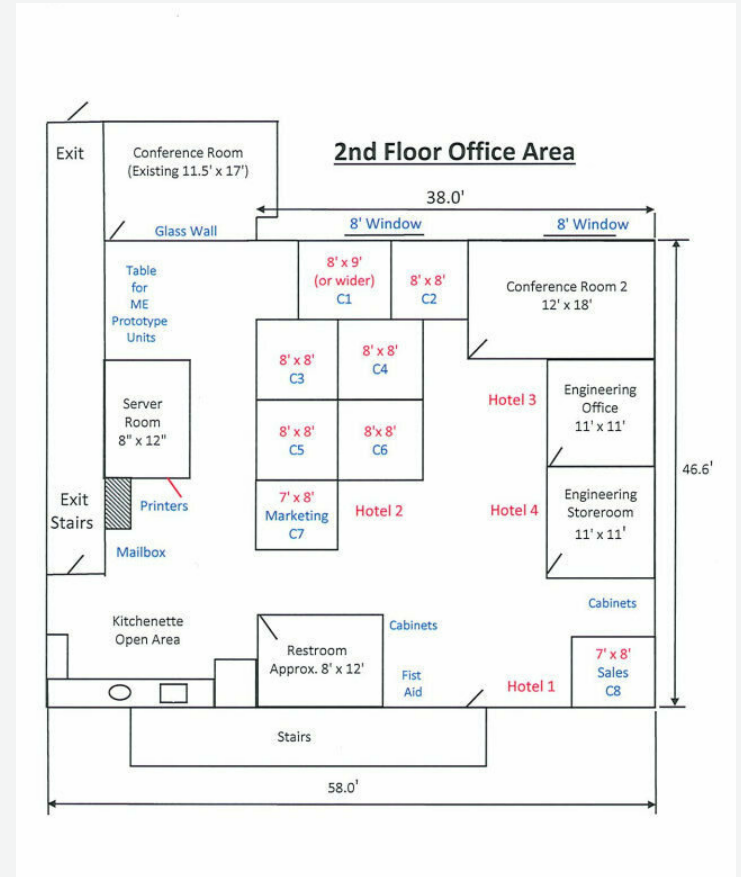
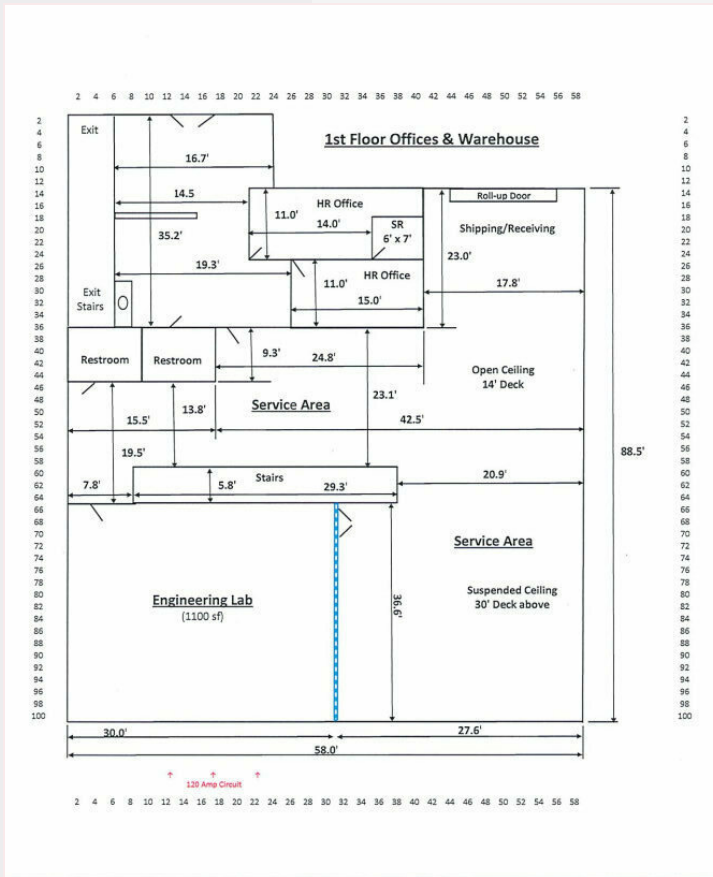


**Corporate Headquarters
Industrial Condo
8,609 sq. ft.**

Kirk Cole
Senior Vice President
949.468.2317
kcole@naicapital.com
CalDRE #00917736

NAICapital
COMMERCIAL REAL ESTATE SERVICES, WORLDWIDE

Property Summary



Property Description

This 8,609 SF condo property offers a prime location with contemporary design, state-of-the-art facilities, ample parking, high-speed internet connectivity, and customizable floor plans.

Location Description

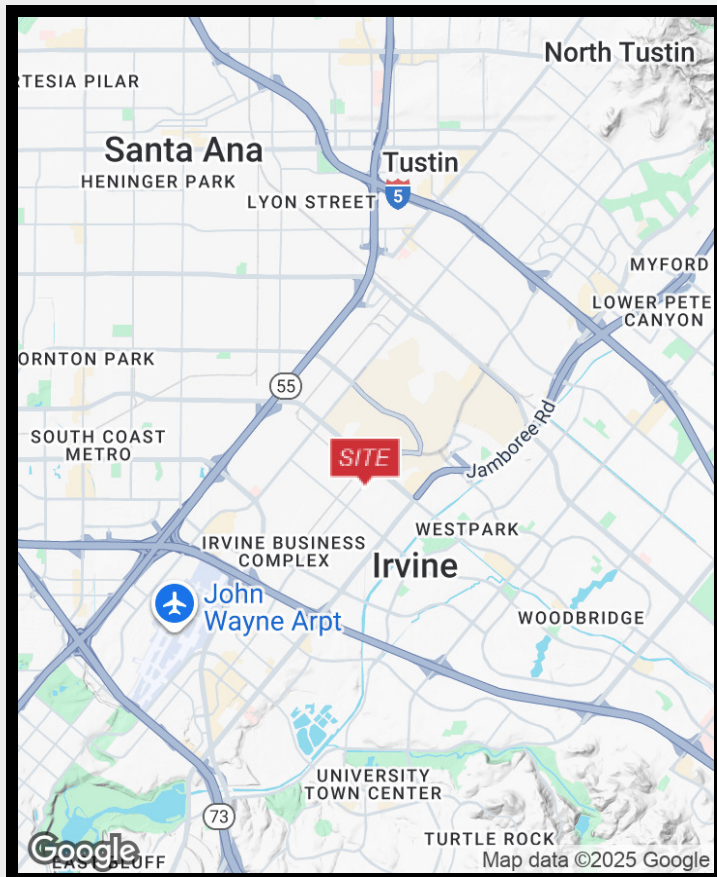
Von Karman and Barranca

Property Highlights

- Total Office Space 3,911 SF
- 2,700 SF Second Floor Office
- 1,211 Ground Floor Office
- 3 Restrooms
- 100% HVAC Drop Ceiling
- 200 AMP 277/480
- One Ground Floor Level Door
- Available July 1, 2026

Available Power

Panel>	LB1		LB2	HB1
Voltage (L-N)	120	120	120	277
Voltage (L-L)	208		208	480
Phases, Wires	3 Phase / 4 Wire		3 Phase / 4 Wire	3 Phase / 4 Wire
Minimum Bus Capacity (A)	200		200	200
Main O.C. Device (A)	200		200	200



Disclaimer

No warranty, express or implied, is made as to the accuracy of the information contained herein. This information is submitted subject to errors, omissions, change of price, rental or other conditions, withdrawal without notice, and is subject to any special listing conditions imposed by our principals. Cooperating brokers, buyers, tenants and other parties who receive this document should not rely on it but should use it as a starting point of analysis and should independently confirm the accuracy of the information contained herein through a due diligence review of the books, records, files and documents that constitute reliable sources of the information described herein. Logos are for identification purposes only and may be trademarks of their respective companies. NAI Capital Commercial, Inc. CAL DRE Lic. #02130474