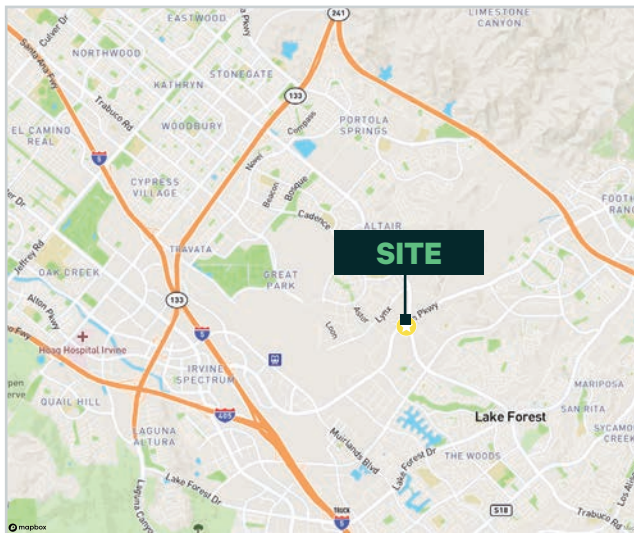


Tripointe

13700 Alton Parkway, Unit 167, Irvine

±1,000 SF Available Immediately



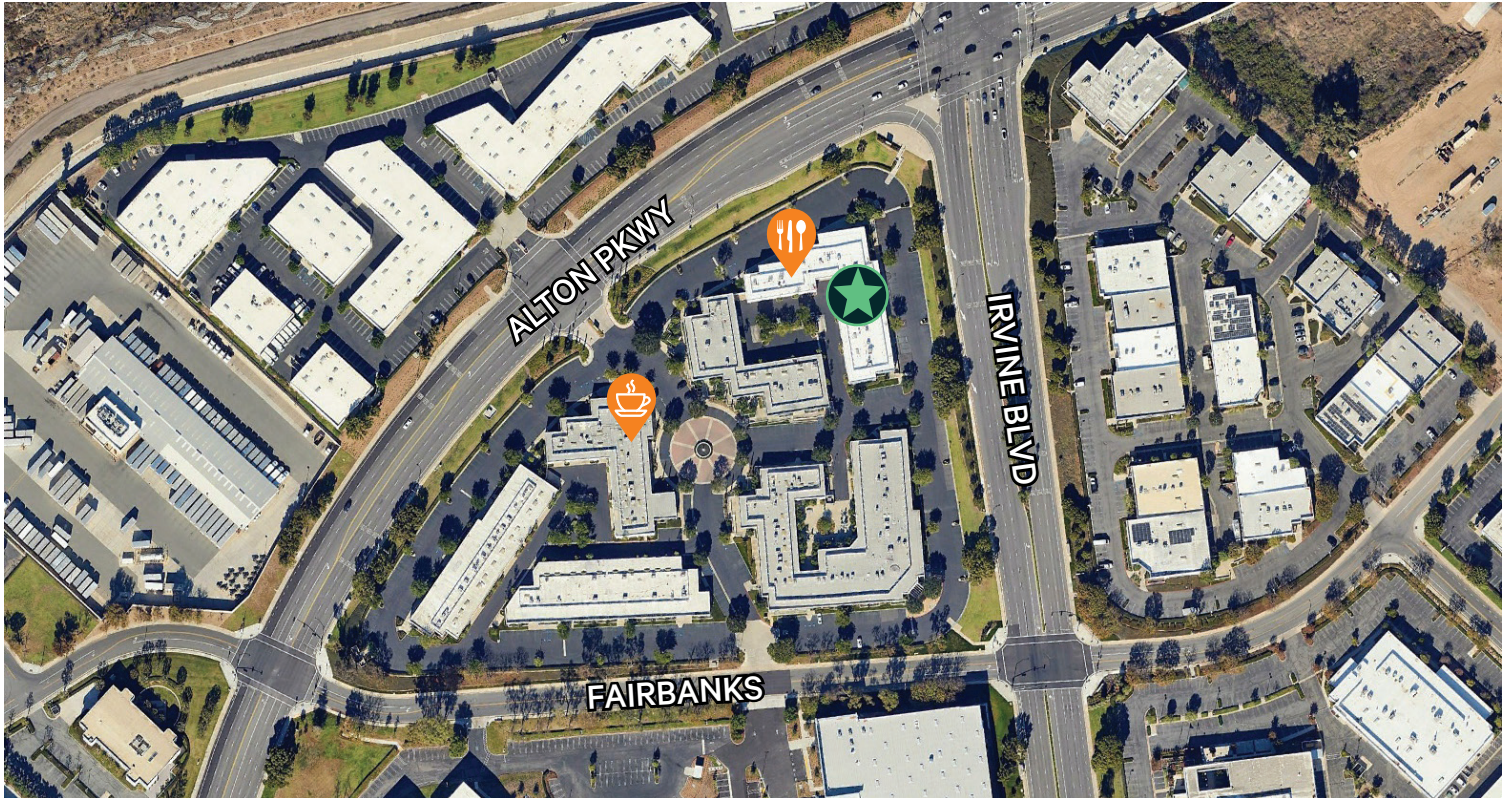
Unit Features

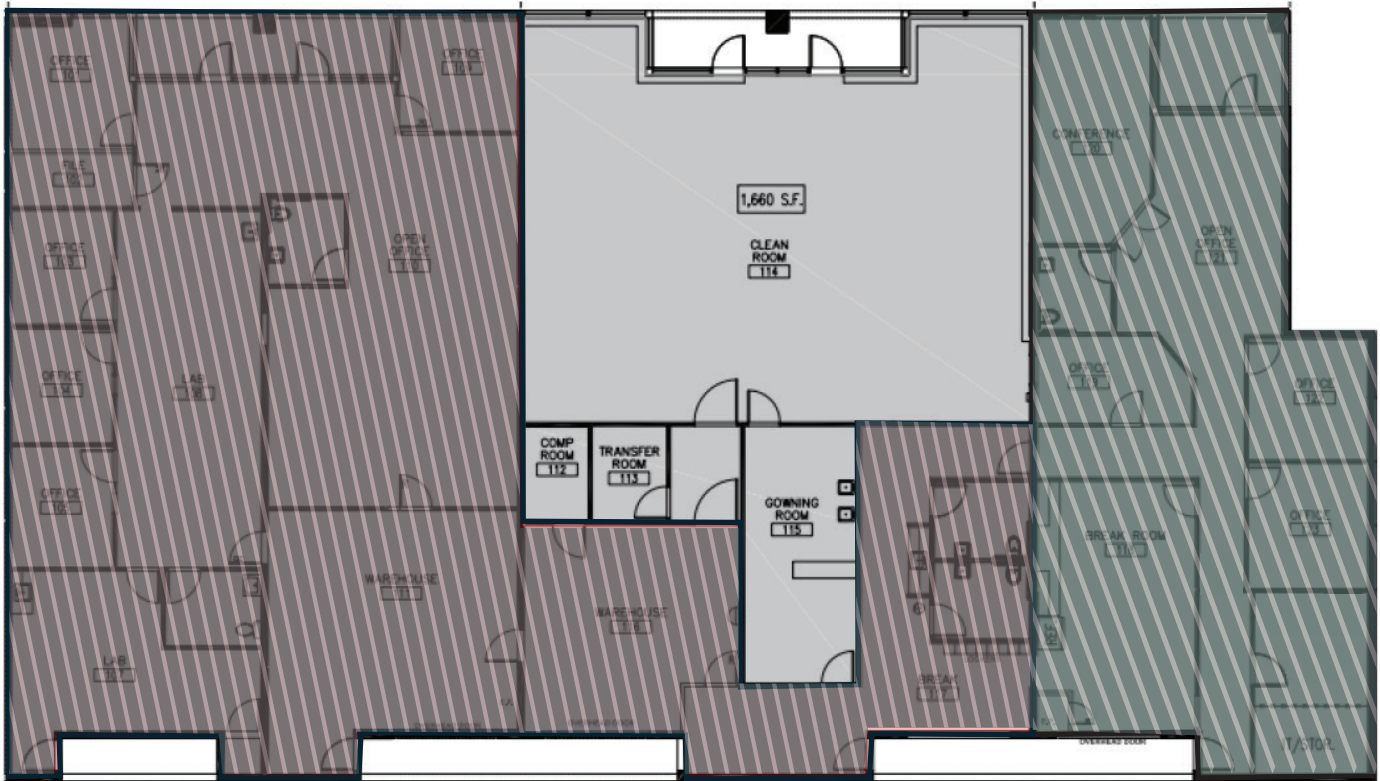
- + ±1,000 SF of Class 8 Clean Room
- + Common Area Breakroom
- + POL 22,482 SF Building
- + Sublease Term thru June 30, 2026
- + 3:1 Free Surface Parking
- + Centrally Located to the 5 & 405 Freeways as well as the 133 & 241 Toll Roads
- + Close to the Irvine Spectrum

Tripointe

13700 Alton Parkway, Unit 167 | Irvine, California

For Sublease





■ = Shared Lab Space

Contact Us

Jake Marthens

+1 949 725 8536

jake.marthens@cbre.com

Lic. 1919213

Joe Czech

+1 949 725 8529

joe.czech@cbre.com

Lic. 1859826

© 2025 CBRE, Inc. All rights reserved. This information has been obtained from sources believed reliable, but has not been verified for accuracy or completeness. You should conduct a careful, independent investigation of the property and verify all information. Any reliance on this information is solely at your own risk. CBRE and the CBRE logo are service marks of CBRE, Inc. All other marks displayed on this document are the property of their respective owners, and the use of such logos does not imply any affiliation with or endorsement of CBRE. Photos herein are the property of their respective owners. Use of these images without the express written consent of the owner is prohibited.