

FOR LEASE

951 NORTH MAIN STREET
LOMBARD, IL

18,216 SF



951 N MAIN ST

LOMBARD, ILLINOIS

Property Features

Building Size:	50,158 SF
Available Size:	18,216 SF
Office Area:	± 3,257 SF
Year Built:	1990
Site Area:	2.6 Acres
Clear Height:	24'
Loading:	3 Interior Docks 2 Drive-in-Doors
Power:	200 amps / 120 – 208v 3-phase
Sprinkler:	Wet System
Taxes:	\$1.53 psf
Operating Expenses:	\$1.28 psf
Lease Rate:	Subject to Offer
Available Date:	November 1, 2026

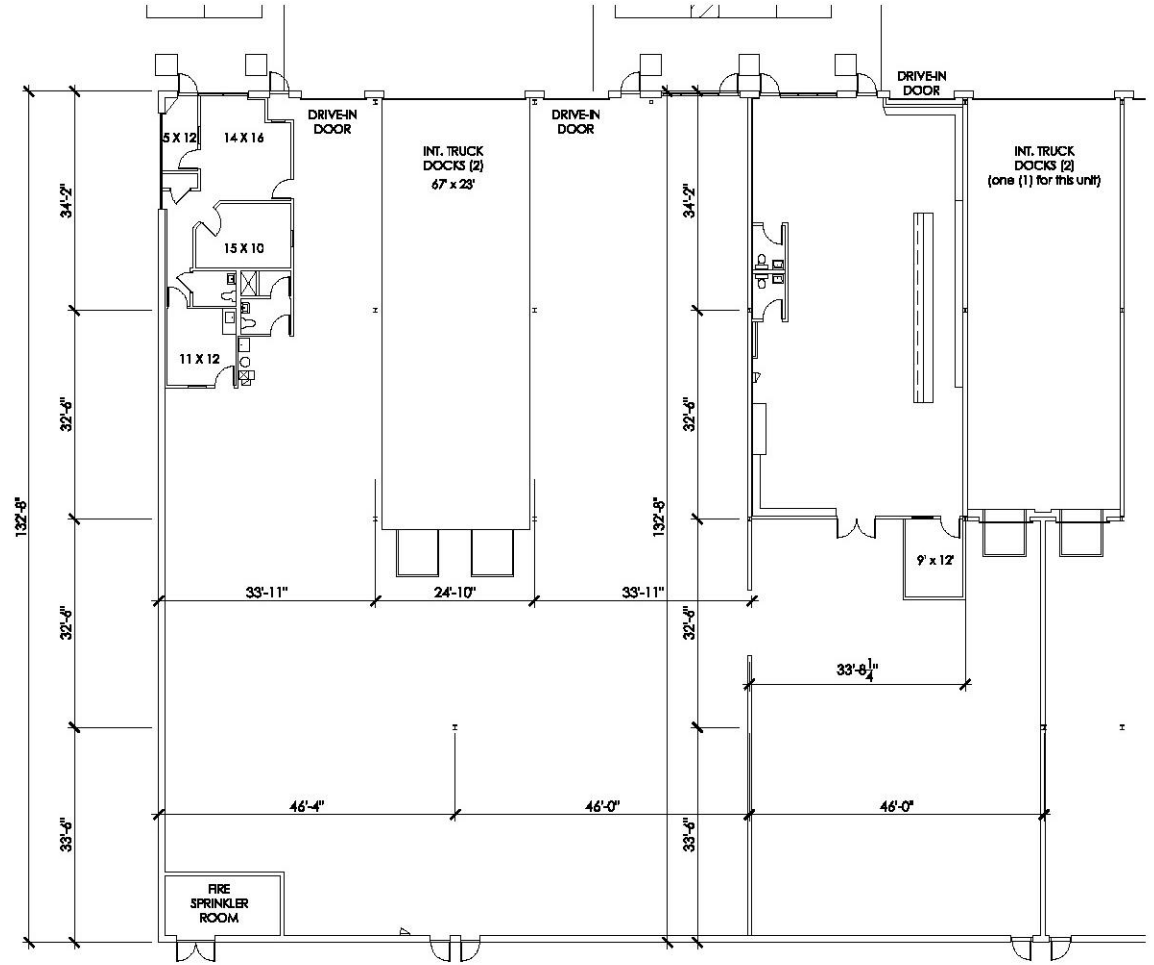
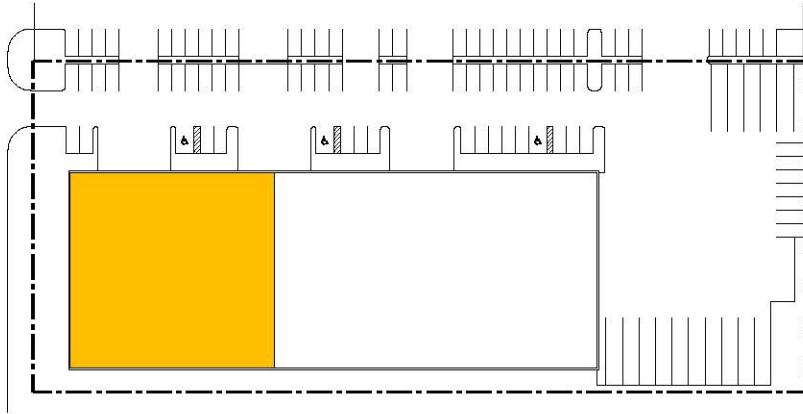


LOADING DOCK



DRIVE IN DOOR

951 N MAIN ST LOMBARD, ILLINOIS




EXISTING FLOOR PLAN




Industrial Park
Setting


Large Land
Site


Abundant
Parking


Low DuPage
County Taxes

951 N MAIN ST

LOMBARD, ILLINOIS



FOR MORE INFORMATION, CONTACT:

BRITT CASEY
Executive Vice Chairman
+1 847 518 3280
Britt.Casey@cushwake.com

AL CARUANA
Executive Managing Director
+1 847 720 1326
Al.Caruana@cushwake.com

JEFF MATELLA
Director
+1 847 720 1349
Jeff.Matella@cushwake.com

