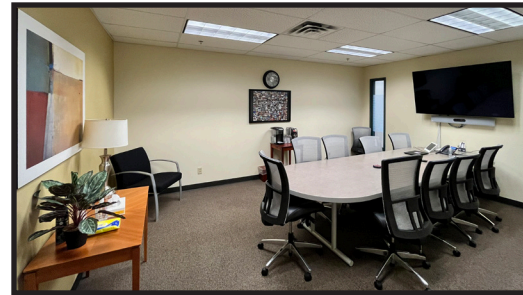
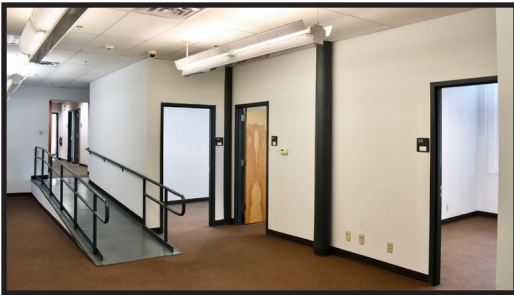


THE LANDMARK
Gurley
BUILDING
514 FULTON AVE | TROY

FOR LEASE

514 Fulton Avenue | Troy, NY
Suite 200 - 12,410± RSF | *MLS#202501019*



ABOUT SUITE 200

Welcome to the National Historic Landmark, known as the Gurley Building in Downtown Troy. Boasting an expansive loft space with 20+ rooms, 2 conference rooms, a kitchenette, private restroom, high exposed ceilings, richly textured brick walls, and gracefully arched grand windows, overlooking RPI and a private interior atrium courtyard. Perfect for Technology, Design or Administrative offices!

Contact us to discuss leasing options!

NOTABLE FEATURES

- Walking distance to restaurants, retail shops, and local amenities.
- Minutes to RPI and Russell Sage.
- Ample immediate parking.
- Easy access to Albany, Saratoga, and Vermont.
- Competitive rates and negotiable lease terms.



Karen Laberge
President & Corporate Broker
KLaberge@AlbanyManagement.com

Sean Kemmy
Commercial Leasing Manager
SKemmy@AlbanyManagement.com

View all of our Capital Region Properties at **AlbanyManagement.com**