



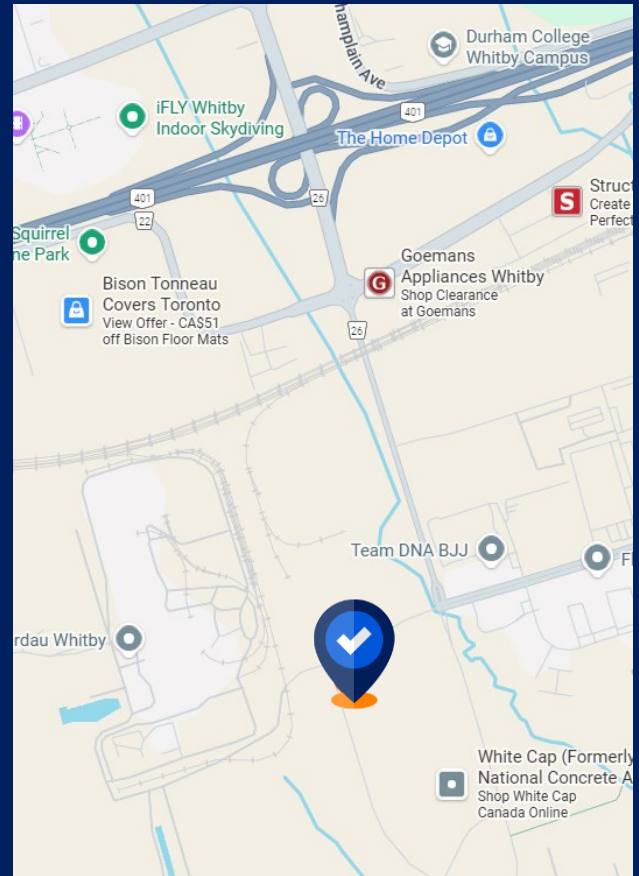
Sublease Available

Space Profile

Total Rentable Area	11,570 SF
Net Rent	Contact Agent
TMI	\$7.40 PSF (est. 2025)
Term	July 30th, 2031
Availability	May 1st, 2026

Features

- Newly renovated, ground floor office space built out with a reception area, kitchen, boardroom, training room, three meeting rooms/private offices, a large open area and private washrooms
- Open concept layout with lots of natural light.
- Strategic south Whitby location, close to 401 and hundreds of local businesses.
- Other tenants in the complex include Amazon and multiple professional services firms.
- Ample employee parking.



Mark Zettel MBA, CPA, CMA
Principal
Sales Representative
647.409.5212
mzettel@cresa.com



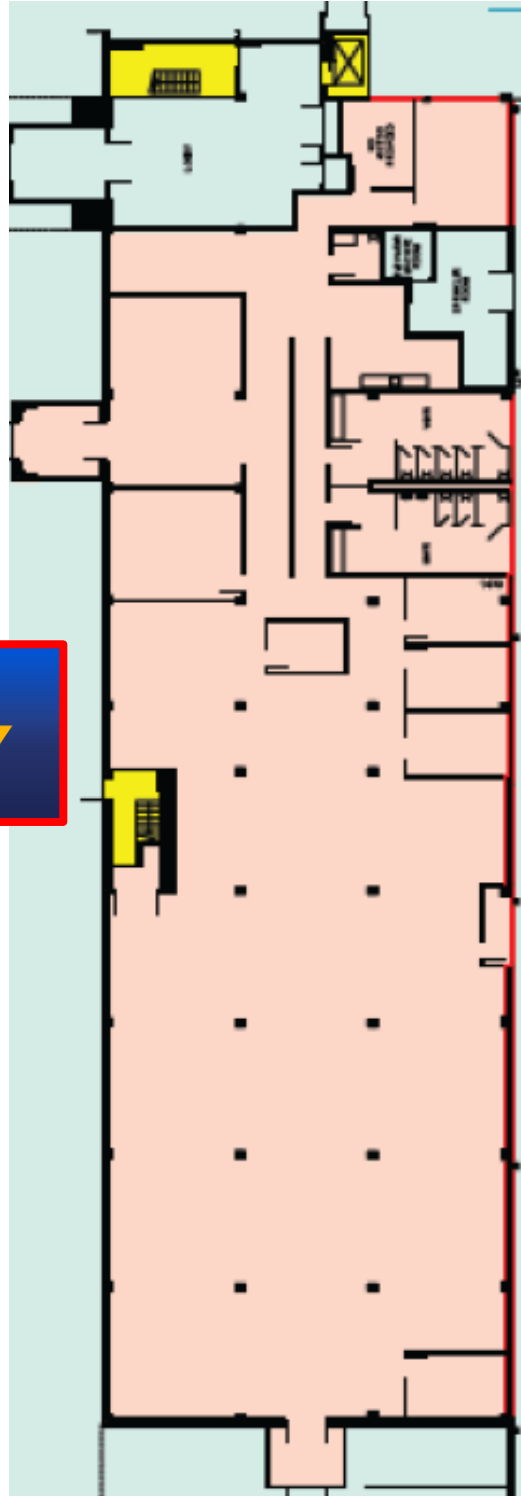
Jeff Sharpe
Principal,
Sales Representative
647.988.1114
Jeff.sharpe@cresa.com



Zach Brewerton
Senior Advisor,
Sales Representative
647.383.8816
zbrewerton@cresa.com



Even though obtained from sources deemed reliable, no warranty or representation, express or implied, is made as to the accuracy of the information herein, and it is subject to errors, omissions, change of price, rental or other conditions, withdrawal without notice, and to any special listing conditions imposed by our principals.



VIEW THE
VIRTUAL TOUR



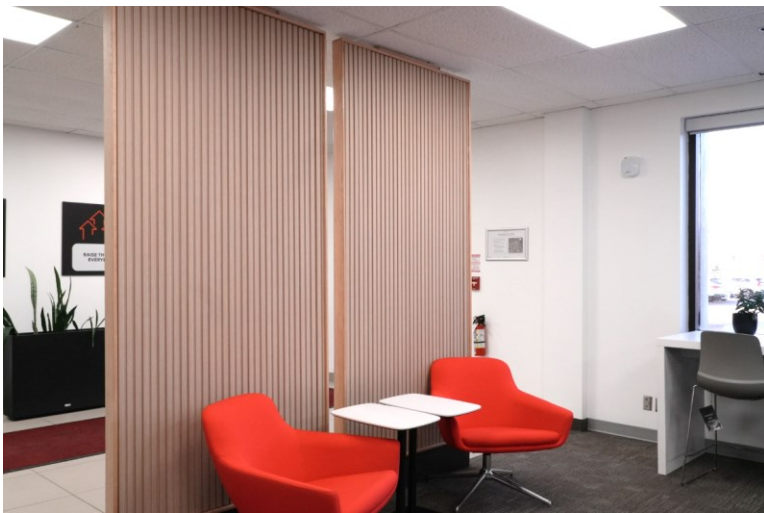
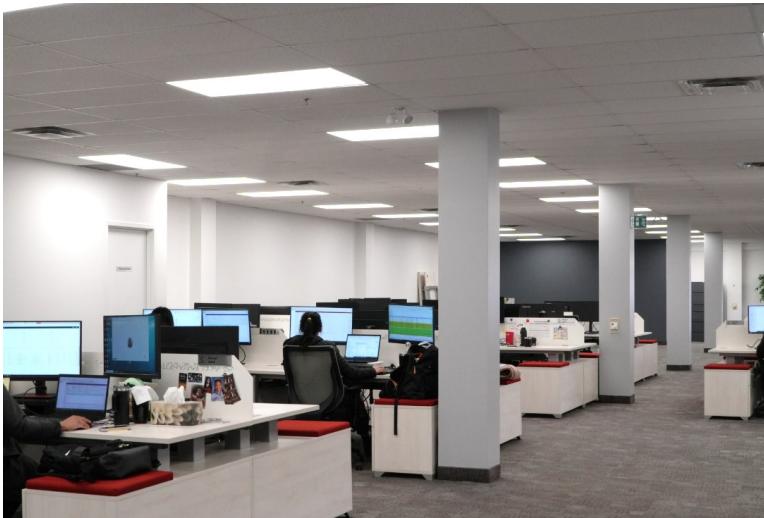
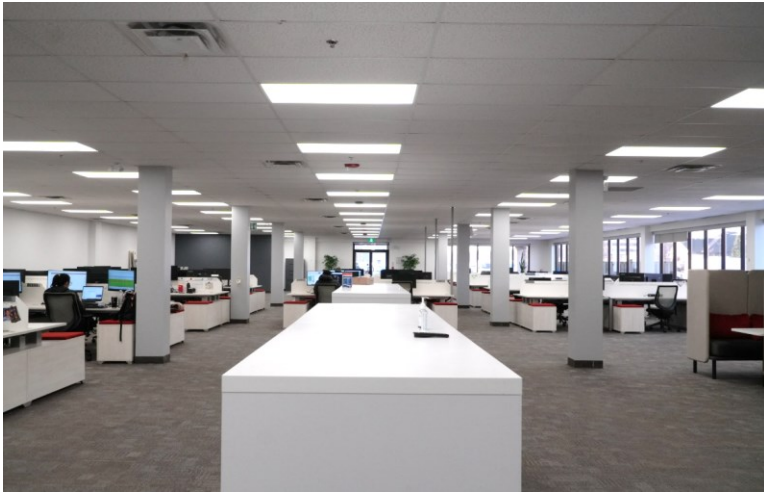
Mark Zettel MBA, CPA, CMA
Principal
Sales Representative
647.409.5212
mzettel@cresa.com



Jeff Sharpe
Principal,
Sales Representative
647.988.1114
Jeff.sharpe@cresa.com



Zach Brewerton
Senior Advisor,
Sales Representative
647.383.8816
zbrewerton@cresa.com



Mark Zettel MBA, CPA, CMA
Principal
Sales Representative
647.409.5212
mzettel@cresa.com



Jeff Sharpe
Principal,
Sales Representative
647.988.1114
Jeff.sharpe@cresa.com



Zach Brewerton
Senior Advisor,
Sales Representative
647.383.8816
zbrewerton@cresa.com