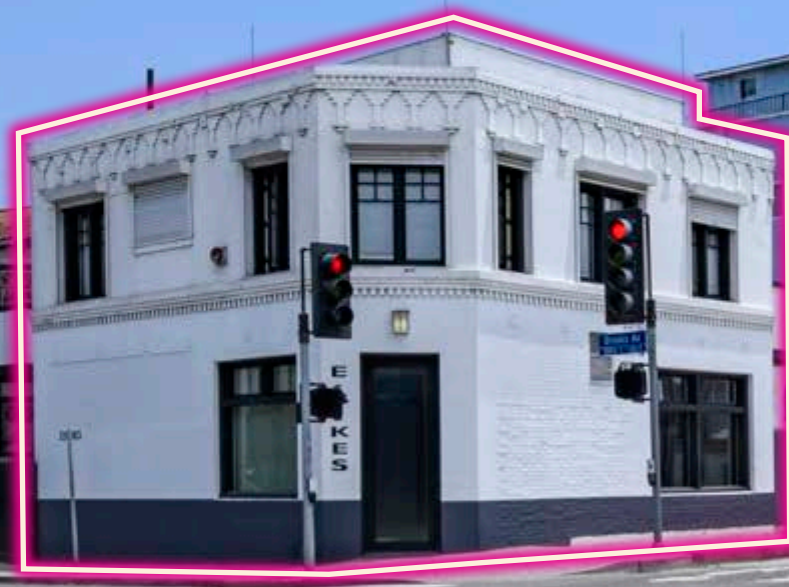


900
PACIFIC
AVENUE
Venice



CORNER BI-LEVEL RETAIL | OFFICE

900
PACIFIC AVENUE
Venice

VENICE BOARDWALK

PACIFIC AVENUE

BROOKS AVENUE

MAIN STREET

ABBOT KINNEY



LEASE DETAILS

900 PACIFIC AVENUE
VENICE, CA 90291

Highly coveted retail/office opportunity in one of the most desirable pockets on the Westside. Old school vibe with modern and creative upgrades along Pacific Avenue.

SIZE

1,756 SF

PRICE

\$5.75/SF NNN

(NNN \$1.70/SF)

TERM

Negotiable

PARKING

Negotiable

PRIVATE RESTROOM + PRIVATE SHARED PATIO

900
PACIFIC
AVENUE
Venice

LISTING TEAM



SAMMY SANTANA

Director

213.807.9798

sammy@zacutogroup.com

DRE #01969450

JAKE ZACUTO

Managing Director

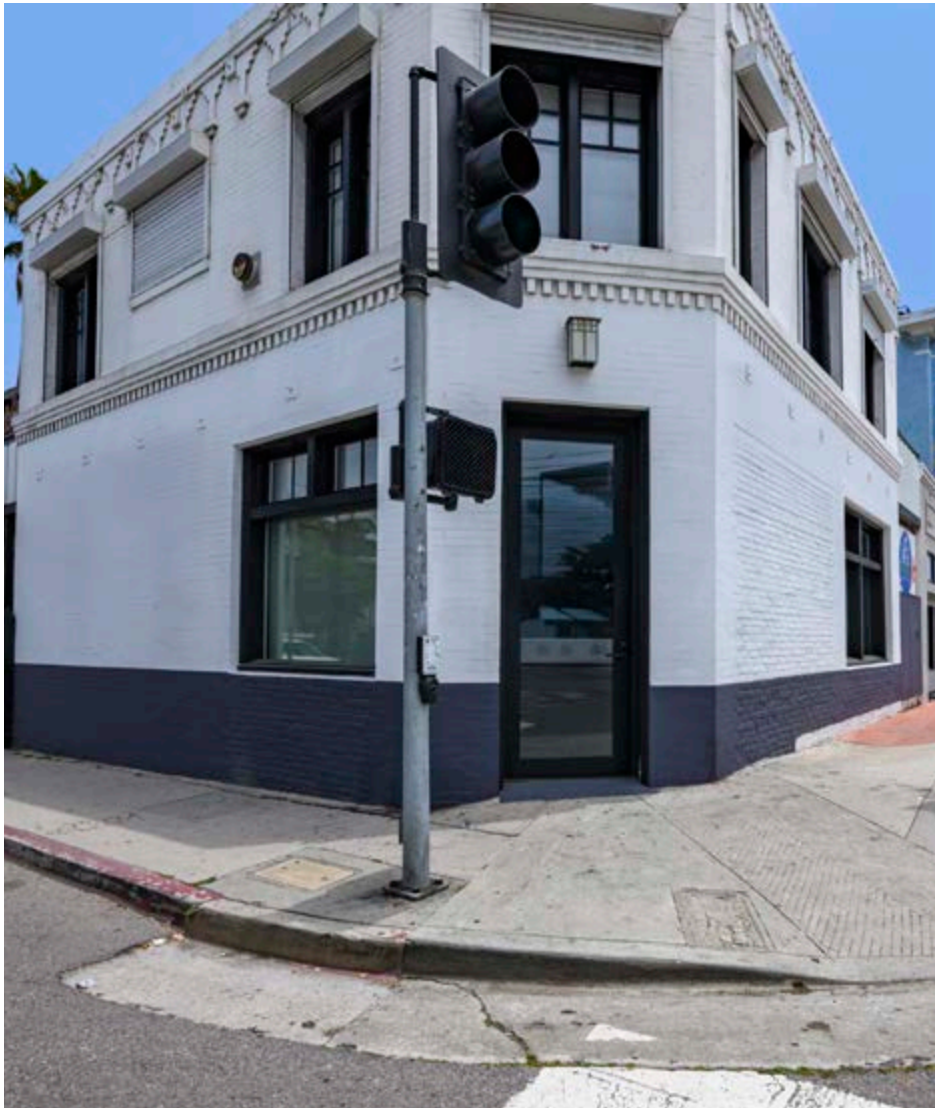
310.469.9012

jake@zacutogroup.com

DRE #01377441

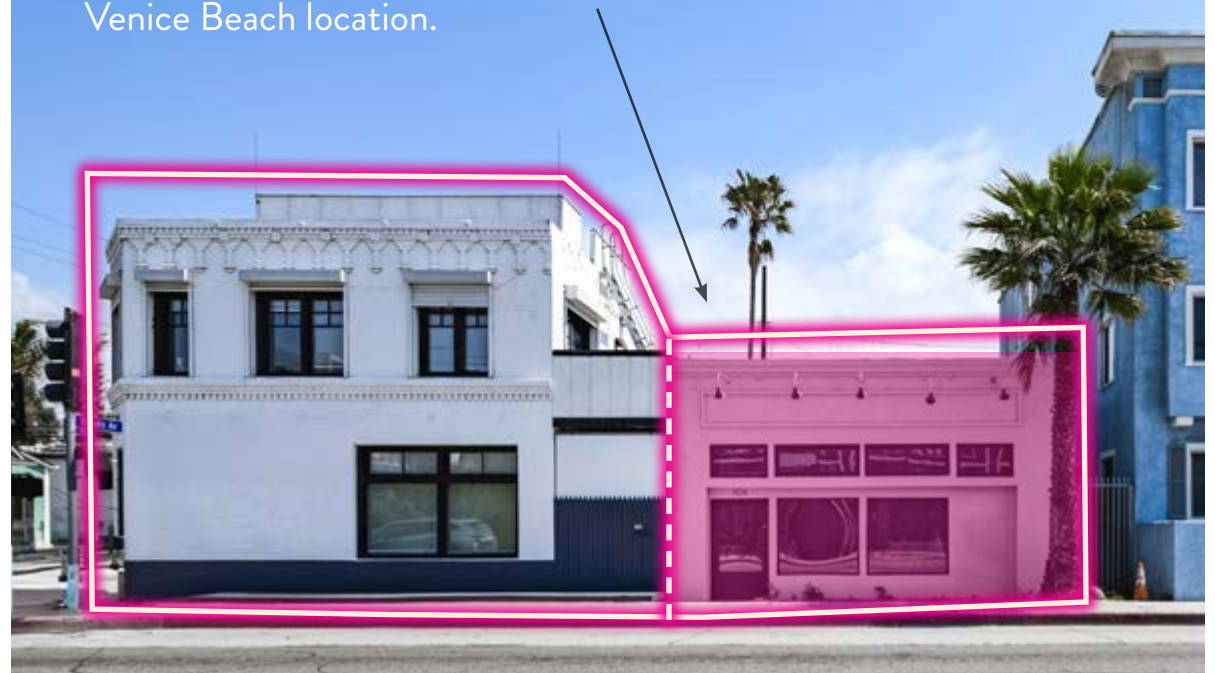
FOR LEASE

900 PACIFIC AVENUE, VENICE, CA 90291



OPPORTUNITY TO COMBINE WITH NEXT DOOR RETAIL SPACE

Rarely available alongside the adjacent retail space, this offering includes the option to expand by an additional 1,100 SF. Ideal for brands seeking a flagship presence in a premier Venice Beach location.



900
PACIFIC
AVENUE
Venice



PRIME VENICE BEACH LOCATION

Highly coveted address at the corner of Pacific and Brooks Avenue, steps to the boardwalk and water in Venice Beach.

HIGH VISIBILITY SPACE W/SIGNAGE

Clean and recognizable facade along a gateway street to Venice. Excellent on building signage opportunity, across from Little Lunch Cafe and steps to Abbot Kinney.

FOR RETAIL OR OFFICE

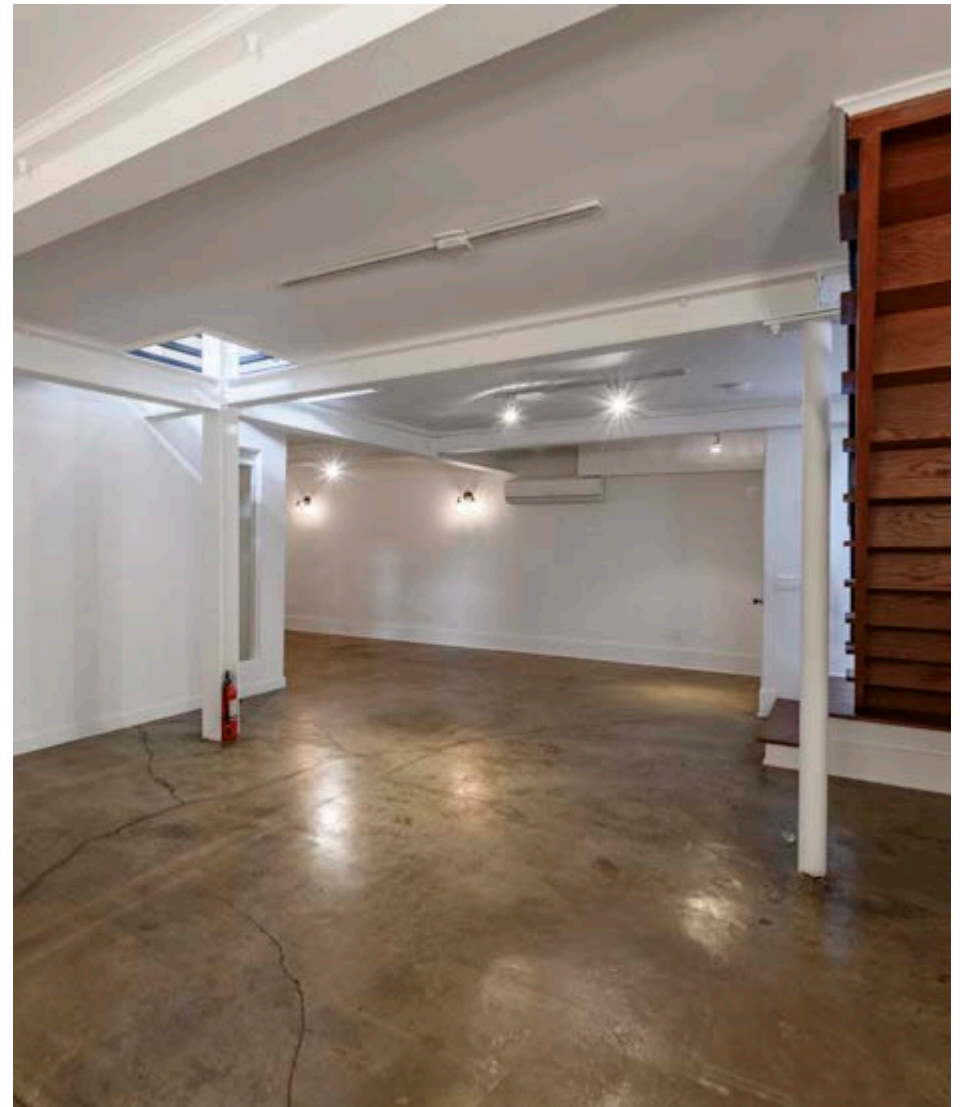
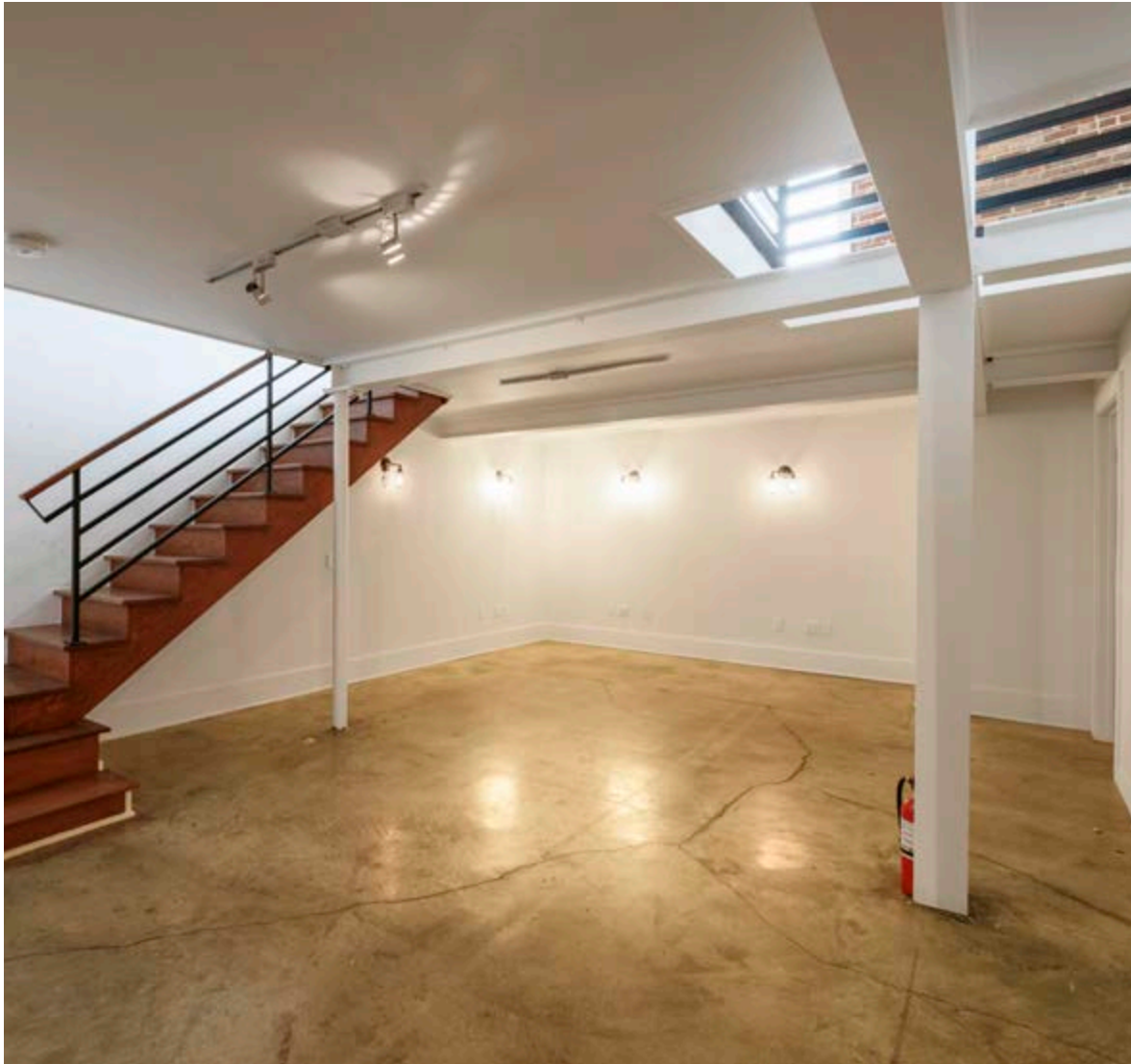
Bi-level ground floor + basement space allows for retail, showroom and/or office uses. Light and bright creative interior design with street facing window line.

900
PACIFIC
AVENUE
Venice



FOR LEASE

900 PACIFIC AVENUE, VENICE, CA 90291

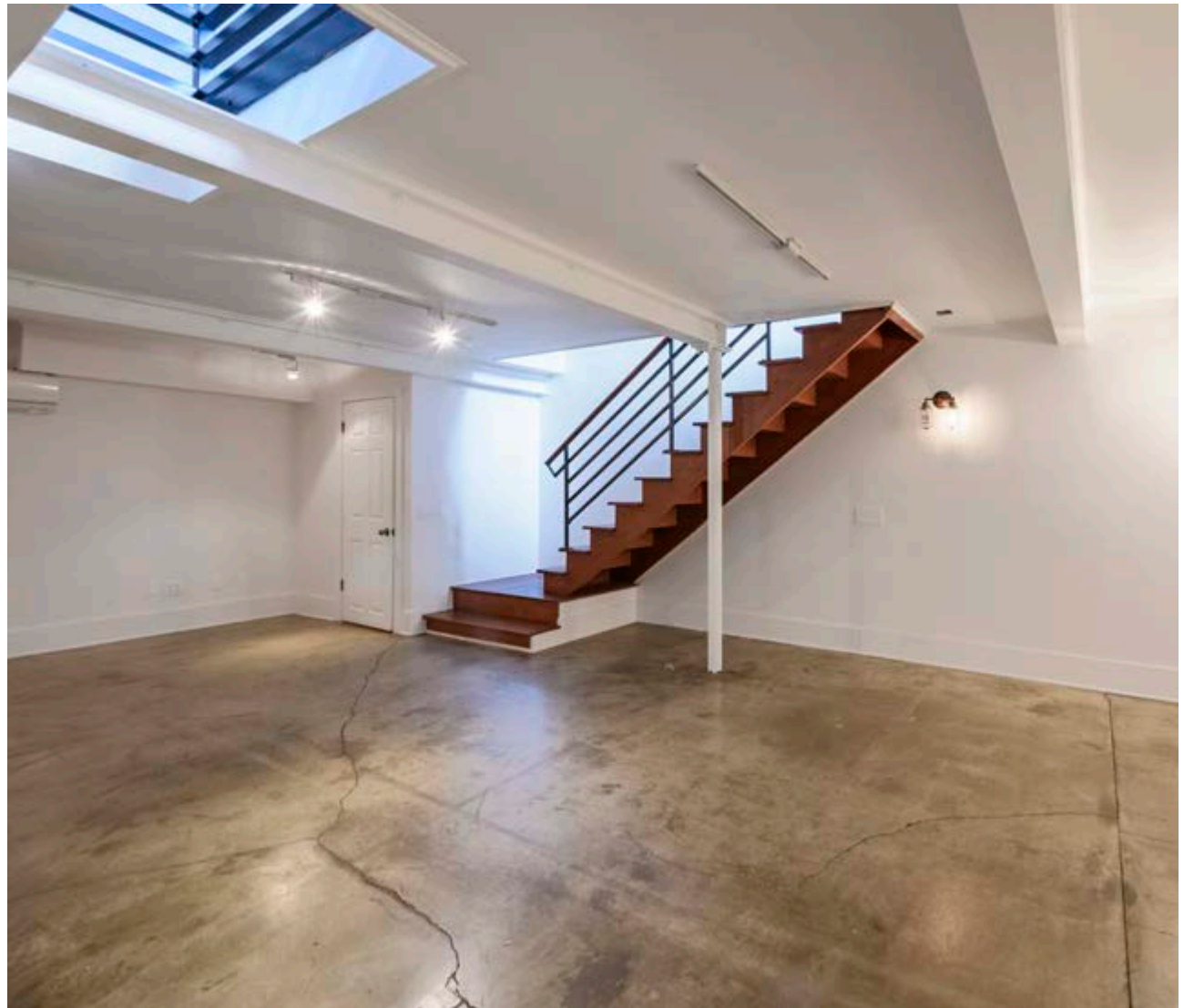


900
PACIFIC
AVENUE
Venice



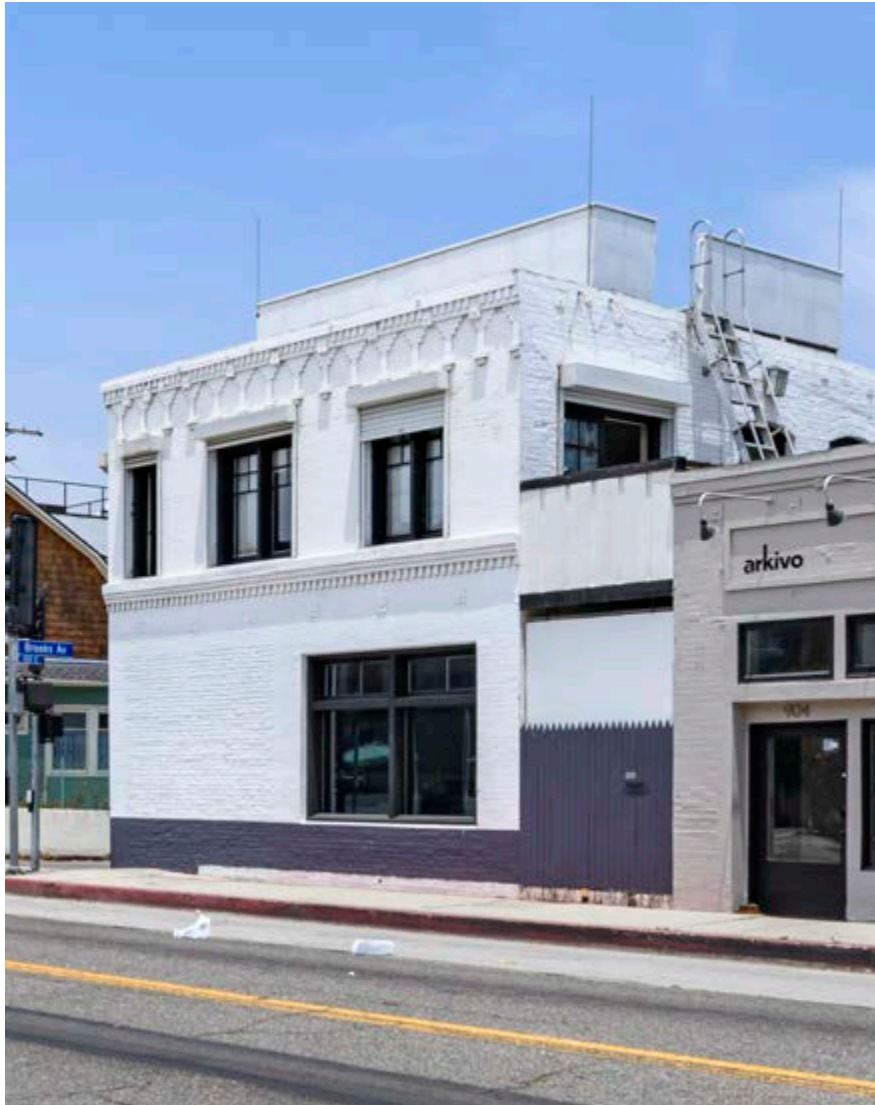
FOR LEASE

900 PACIFIC AVENUE, VENICE, CA 90291



FOR LEASE

900 PACIFIC AVENUE, VENICE, CA 90291



SANTA MONICA

OCEAN PARK

MAR VISTA

900
PACIFIC
AVENUE
Venice

OAKWOOD

VENICE BEACH

VENICE

MARINA DEL REY

MARINA PENINSULA



900
PACIFIC
AVENUE
Venice



SAMMY SANTANA

Director

213.807.9798

sammy@zacutogroup.com

DRE #01969450

JAKE ZACUTO

Managing Director

310.469.9012

jake@zacutogroup.com

DRE #01377441

No warranty, express or implied, is made as to the accuracy of the information contained herein. This information is submitted subject to errors, omissions, change of price, rental or other conditions, withdrawal without notice. All parties who receive this material should not rely on it, but should use it as a starting point of analysis, and should independently confirm the accuracy of the information contained herein through a due diligence review of the books, records, files and documents that constitute reliable sources of the information described herein. Logos and images are for identification purposes only and may be trademarks of their respective companies. All terms provided are approximate. Leasee to verify. 6/2025

ZACUTOGROUP.COM | 310-469-9300

