

Europoint

5-11 Lavington Street, London, United Kingdom, SE1 0NZ

This prominent building is situated on the northern side of Lavington Street, close to its junction with Southwark Street. Surrounded by an eclectic mix of cafes, bars, and restaurants, the area is perfect for client meetings or after-work socials. Nearby cultural landmarks like the Tate Modern and The Cut theatre district add to the creative energy.



Manned reception



Shower



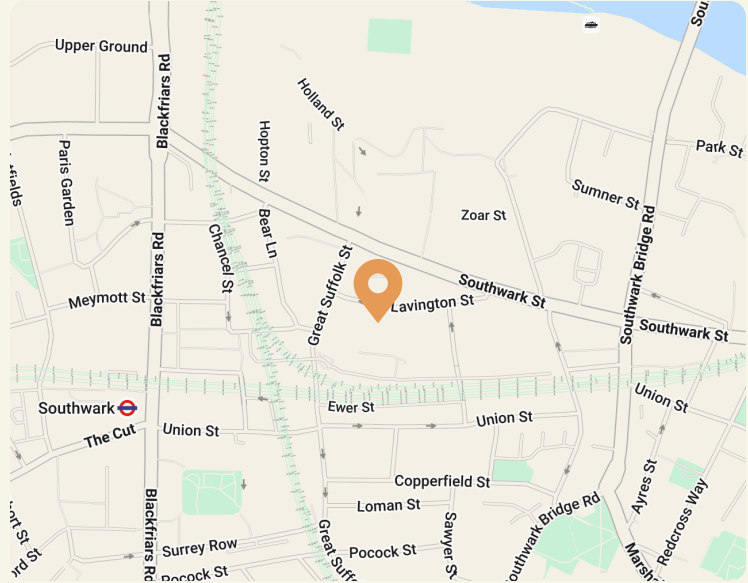
Lift



Bike storage



EPC A



Transport Links

Southwark | 5 min. walk



London Bridge | 10 min. walk



London Waterloo | 11 min. walk



Europoint

2nd Floor

Size

7,592 sq ft

Min. Term

24 months

Current State

Fully fitted

Legal structure

Lease + MSA

Price (pcm) + VAT

£76,300

Price (psf) + VAT

£121





Kitt.



Kitt.

Europoint

2nd Floor



Kitt.

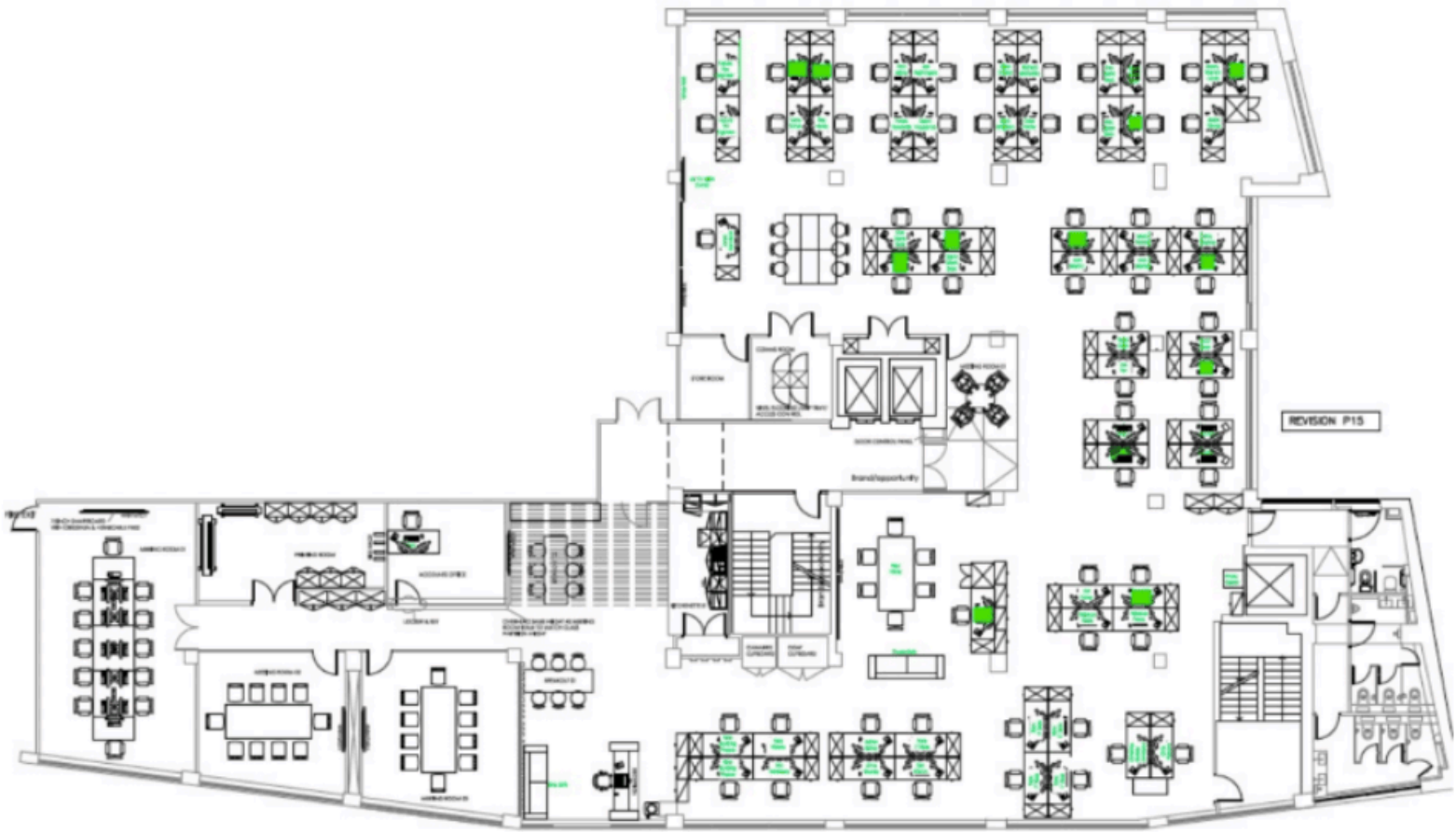


Kitt.

Europoint

2nd Floor

Size	Min. Term	Current State	Legal Structure
7,592 sq ft	24 months	Fully fitted	Lease + MSA



Everything you need in a workspace, sorted

Kitt's core package includes the following, but we'll always customise services and support to your unique needs.



Rent

Business rates

Service charge

Building insurance

Demise electricity

Broadband (200 Mbps)



Fit out and furniture

Branding and accessories

Daily cleaning and waste removal

Office management app

Planned and preventative maintenance

Health and safety

