

# Panorama City

14500 Roscoe Blvd, 4th Floor, Panorama City, CA 91402



## PRIVATE OFFICES

Highly professional private offices for individuals and teams that are flexible and scaled for growth.

## MEETING ROOMS

Spacious, well-appointed meeting rooms with on-site administrative support. Available for an hour, day or longer.

## VIRTUAL OFFICES

Establish a business presence with mail handling, phone answering or meeting room time.

## ABOUT THIS LOCATION

The Valley Gateway Building is centrally located near the intersection of Roscoe Boulevard and Van Nuys Boulevard, providing a high level of exposure. Enjoy the view from a well-appointed office or nearby shops and restaurants. It's also moments away from the Van Nuys Courthouse West and other amenities.

## CONTACT US

Let's touch base! Contact the on-site General Manager at 818-714-2000 or [PANmanager@premierworkspaces.com](mailto:PANmanager@premierworkspaces.com) to schedule a tour.



## PREMIER AMENITIES

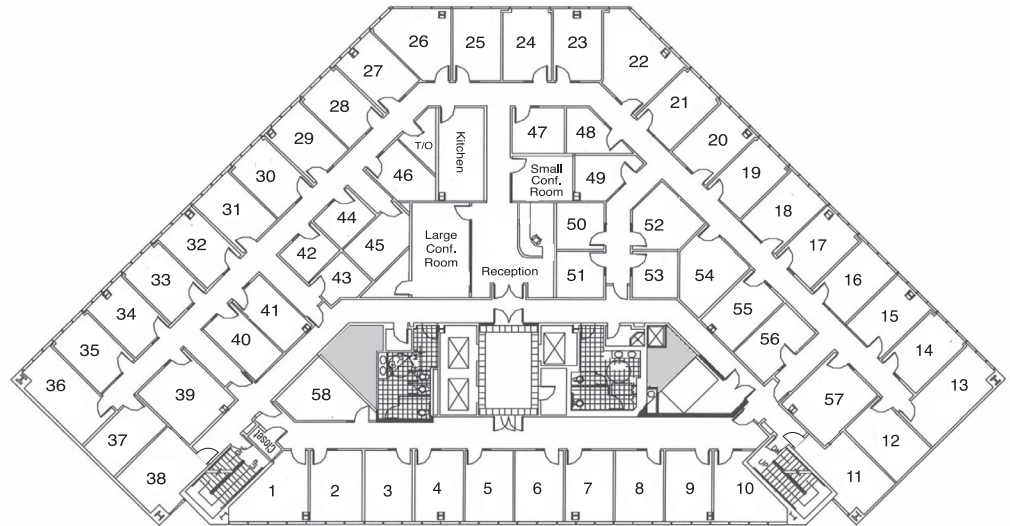
Our private suites can be easily customized to fit your desired aesthetic and brand.

- Private Offices
- Team Rooms
- High Speed Internet
- Telephone Answering
- Mail Collection
- Equipped Kitchen
- Day Offices
- Meeting Rooms
- Daily Janitorial

## PREMIER DIFFERENCE

We've been perfecting the professional workspace for over 17 years.

- Highly-Professional Atmosphere
- On-Site Manager & Support Staff
- Scalable Solutions for Individuals and Teams
- On-Site Billing
- 90+ Locations Nationwide



## NEARBY AMENITIES

Panorama City is centrally located in the San Fernando Valley. It features the highest population density in the Valley, making it a popular destination for growing businesses.

### Nearby Amenities:

- 24 Hour Fitness
- Dignity Health, Northridge
- California State University Northridge
- Mission Community Hospital
- The Plant Shopping Center
- Valley Presbyterian Hospital
- Van Nuys Courthouse West
- US Census Bureau

### Nearby Transit:

- Freeways – 405, 101, 118, 170
- Hollywood Burbank Airport (BUR)

## CONTACT US

Let's touch base! Contact the on-site General Manager at 818-714-2000 or PANmanager@premierworkspaces.com to schedule a tour.