

POMPANO CENTER OF COMMERCE II

1550-1650 NW 18th Street

WAREHOUSE BUILDING FOR LEASE



18,505 SF Available

POMPANO BEACH, FLORIDA

1700

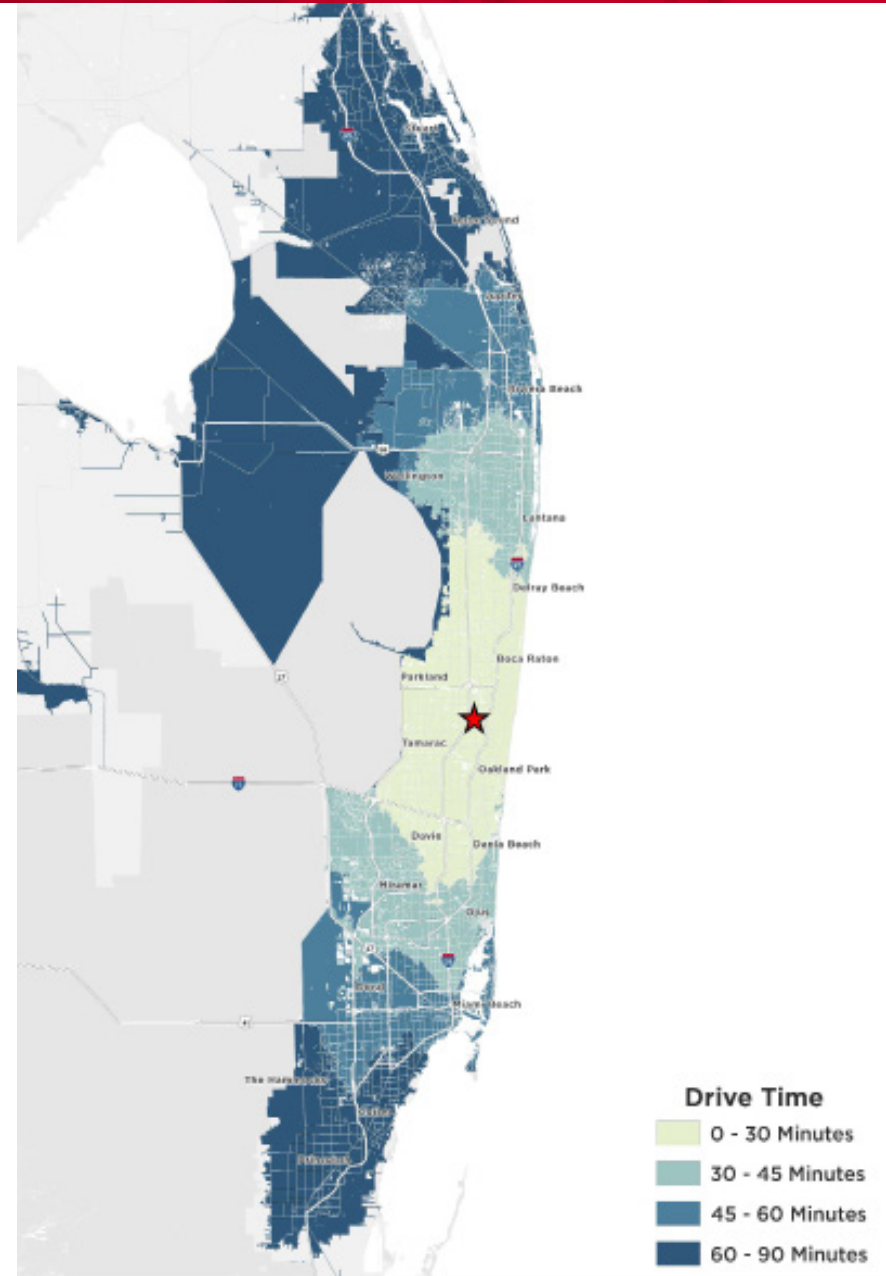
1550-1650 NW 18th Street

PROPERTY HIGHLIGHTS

- Geographically central to the Tri-County area of Miami-Dade, Broward and Palm Beach Counties
- Pompano Beach is a very business-friendly city with an active economic development council
- Immediate access to I-95 and Florida's Turnpike

LOCATION HIGHLIGHTS

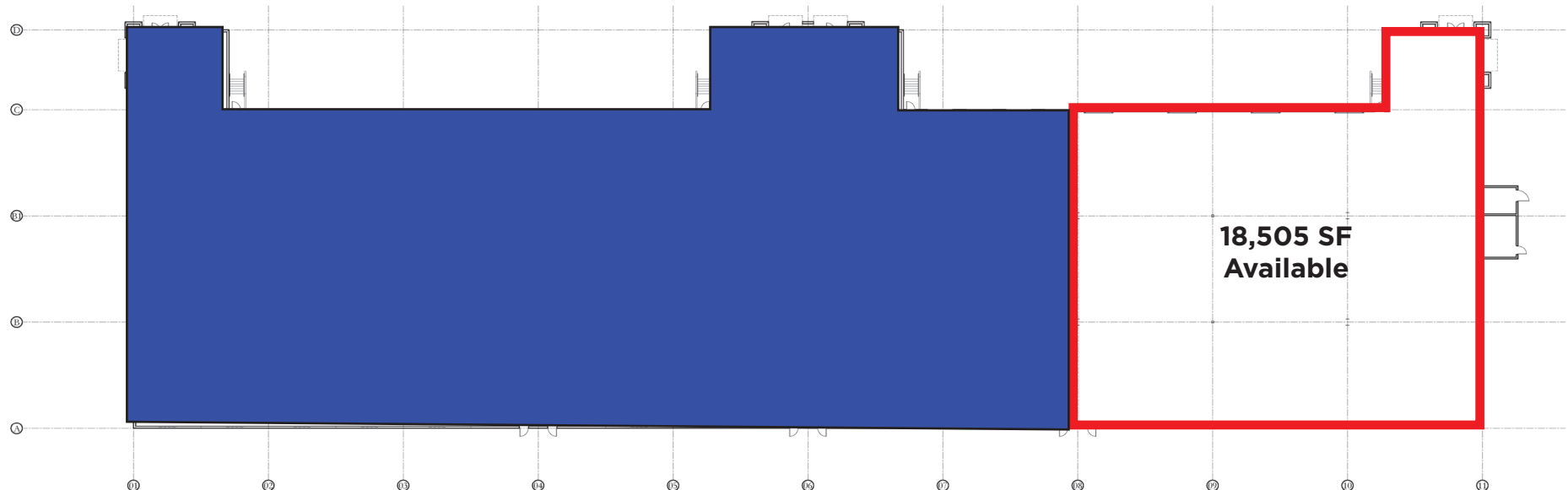
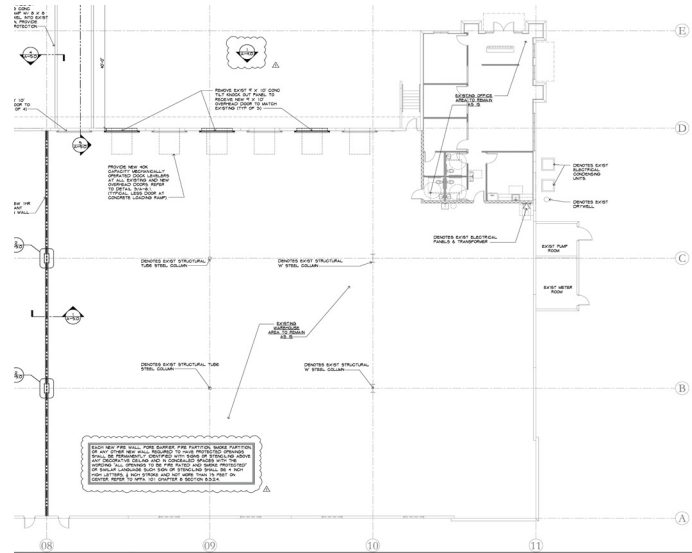
- Located in the largest submarket in Broward County with immediate interstate access
- **DRIVE TIMES:**
 - **TriRail Station:** 5 Minute Drive
 - **FL Turnpike:** 12 Minute Drive
 - **I-95:** 7 Minute Drive
 - **Palm Beach International Airport:** 36 Minute Drive
 - **Ft Lauderdale International Airport:** 27 Minute Drive
 - **Miami International Airport:** 45 Minute Drive



POMPANO BEACH, FLORIDA

BUILDING SPECIFICATIONS

- 1700 NW 18th Street, Suite 901
Pompano Beach, FL 33069
- 18,505 SF available for lease
- SF office
- 32' clear height
- ESRF fire sprinklers
- 6 dock high doors, all with pit levels
- 1 drive-in ramp
- Zoned O-IP/PCF
- Immediate Occupancy
- Lease Rate: \$18.95 NNN, \$6.11 OpEx





POMPANO CENTER OF COMMERCE II

POMPANO BEACH, FLORIDA

For More Information, Contact:

CHRIS METZGER, SIOR

Vice Chairman

+1 954 415 9155

christ.metzger@cushwake.com

MATTHEW G. MCALLISTER, SIOR

Executive Director

+1 561 901 5216

matthew.mcallister@cushwake.com

ERIC CANTOR

Senior Associate

+1 561 227 2068

eric.cantor@cushwake.com

225 NE Mizner Boulevard, Suite 300

Boca Raton, FL 33432 | USA

cushmanwakefield.com

