

2850

NORTH RIDGE ROAD
ELLICOTT CITY, MD

YOUR SIGN HERE

2850

1,000 - 12,000 SF

OF MOVE IN READY MEDICAL SPACE

FOR LEASE

**GENEROUS TI PACKAGES
FROM LANDLORD AVAILABLE**

BUILDING HIGHLIGHTS

- Signage opportunity
- Dedicated patient drop-off area
- Proximity to healthcare facilities
- 4.2/1,000 Parking Ratio
- Recent base building upgrades including HVAC and elevators

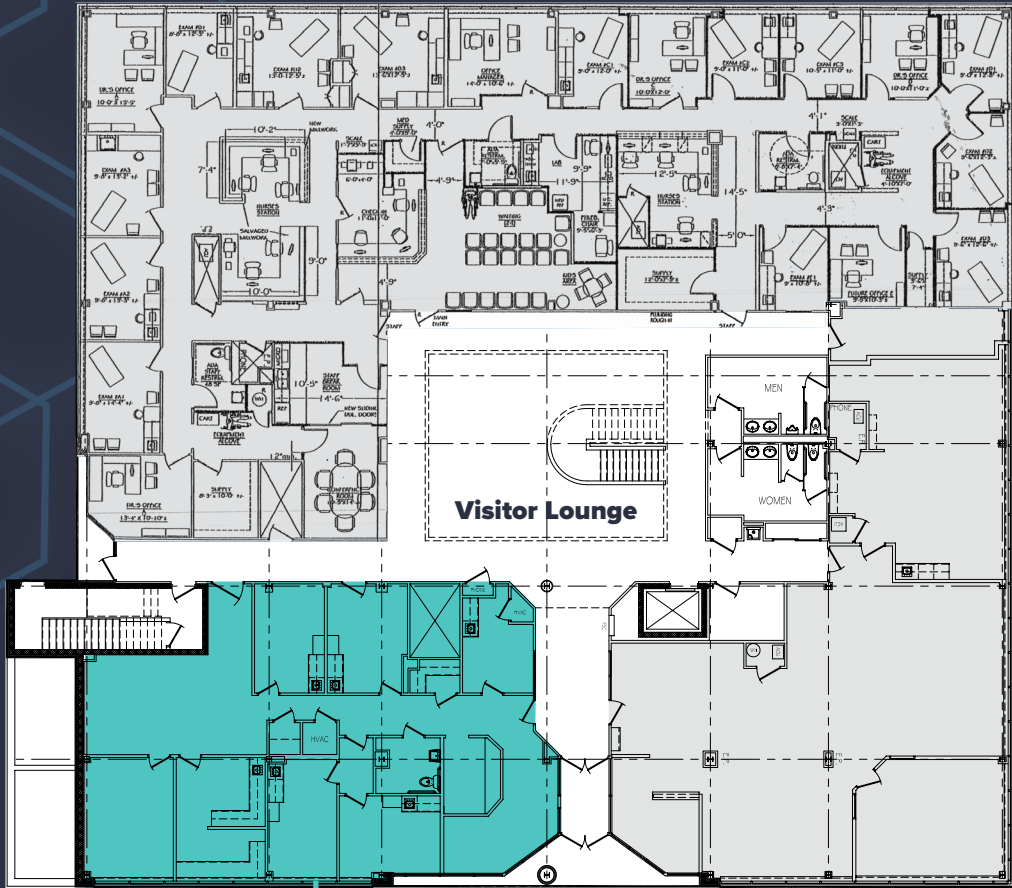
301.337.4700

www.scheerpartners.com



Scheer Partners
A Reputation for Results

FIRST FLOOR



SUITE 102
2,427 SF



LOBBY



SUITE 201

Up to 12,205 SF Available

SUITE 204

8,637 SF

Available 7/25

SUITE 203

1,364 SF

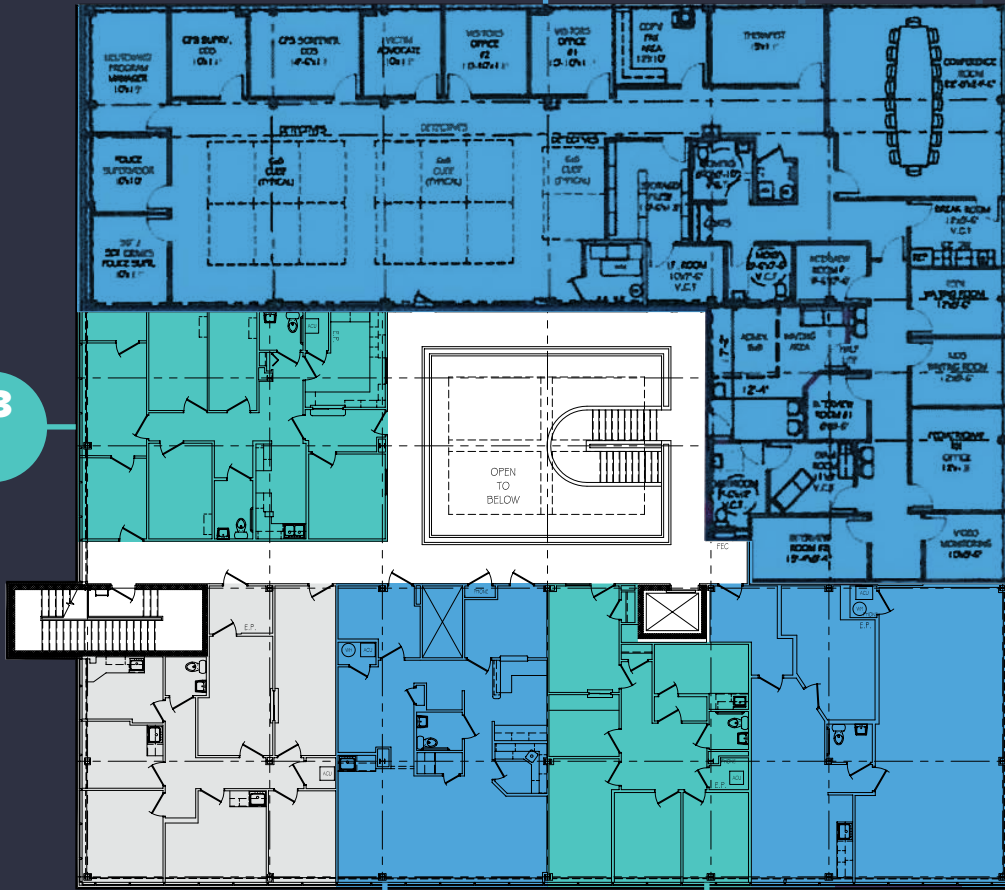
SUITE 201

1,160 SF

SUITE 210

1,044 SF

Available 5/27



SECOND FLOOR

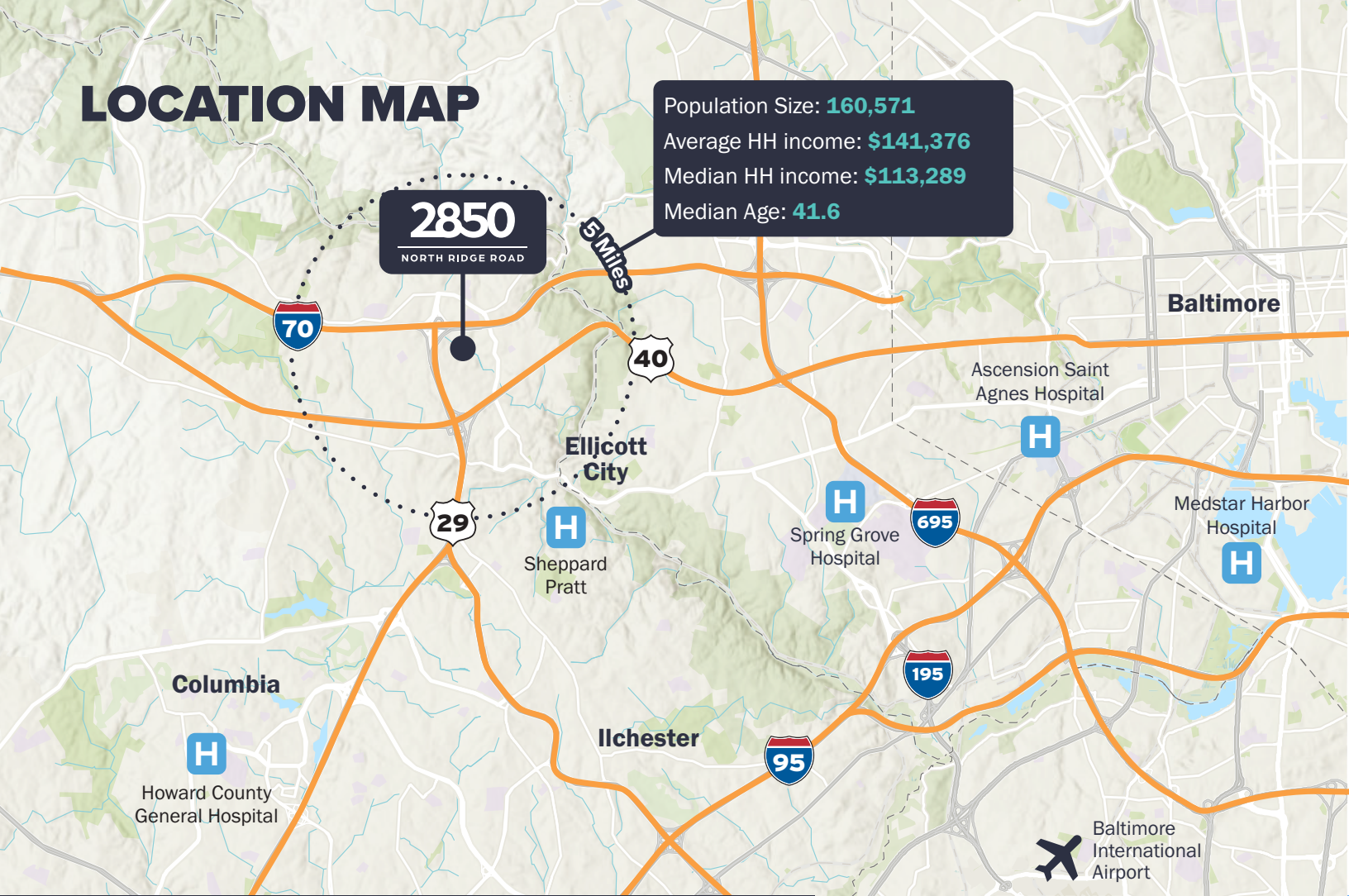


SUITE 203



LOBBY

LOCATION MAP



2850

NORTH RIDGE ROAD

For Leasing Opportunities:

Andrew Borsa

Senior Associate

240.315.3103

aborsa@scheerpartners.com

Scheer Partners

A Reputation for Results

www.scheerpartners.com

