

BOREL PLACE

SAN MATEO

JOHN KRAFT

Senior Managing Director
650.358.5277
john.kraft@nrmk.com
CA RE License #01787698

MAXX MCGEE

Director
650-358-5265
maxx.mcgee@nrmk.com
CA RE License #02251658



NEWMARK

The distributor of this communication is performing acts for which a real estate license is required. The information contained herein has been obtained from sources deemed reliable but has not been verified and no guarantee, warranty or representation, either express or implied, is made with respect to such information. Terms of sale or lease and availability are subject to change or withdrawal without notice.

HIGHLIGHTS

BOREL PLACE
SAN MATEO



PARK-LIKE SETTING

AMPLE PARKING

FLEXIBLE DEAL TERMS



Convenient Mid-Peninsula Location

Walking Distance to Borel Square Shopping Center

Walking Distance to Hayward Park Caltrain Station

Close Proximity to Downtown Amenities



AVAILABLE SPACES

1611

Suite 200: ± 776 SF

1650

Suite 104: $\pm 1,224$ SF

Suite 120: $\pm 3,726$ SF

Suite 203: $\pm 1,159$ SF

Suite 222: $\pm 1,490$ SF

Suite 224: $\pm 1,035$ SF

Suite 227: ± 950 SF

Suite 230: ± 681 SF

1777

Suite 104: ± 676 SF

Suite 200: $\pm 1,760$ SF

Suite 204: $\pm 1,063$ SF

Suite 308: ± 342 SF

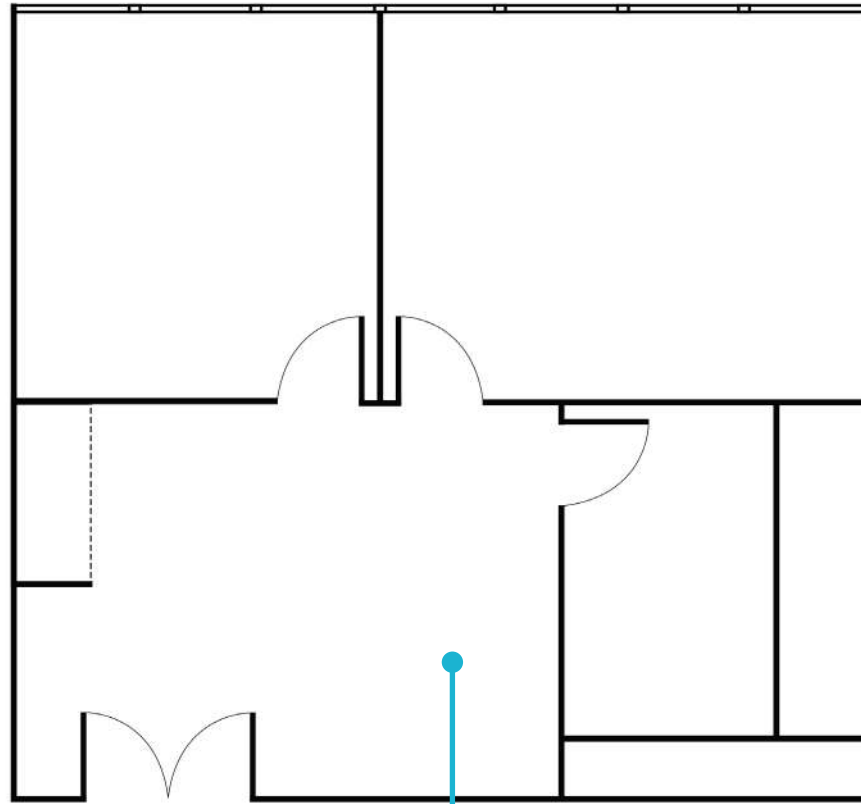
Suite 420: ± 715 SF

Suite 500: $\pm 2,668$ SF



FLOOR PLAN

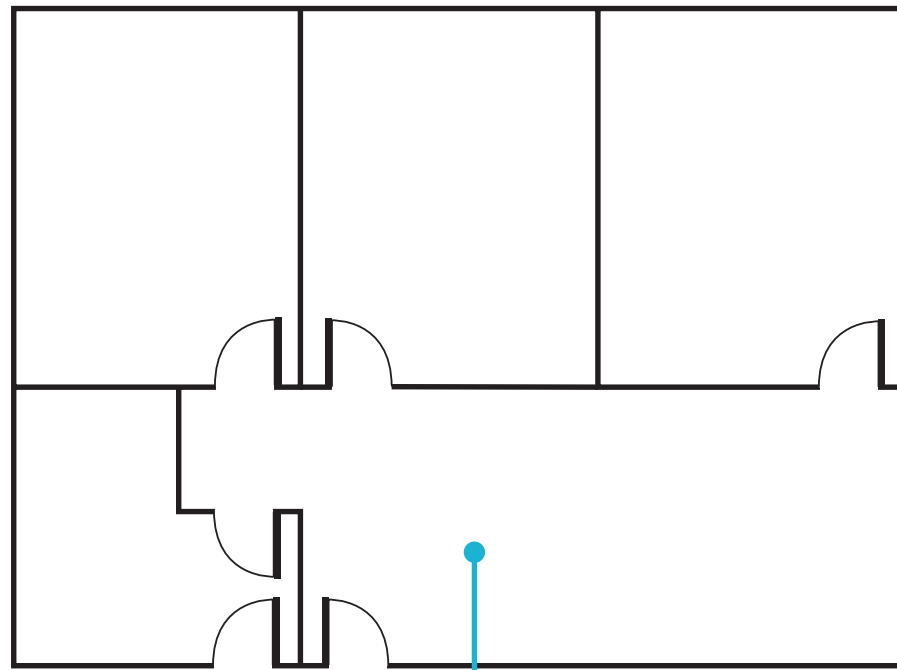
1611



Suite 200
±776 SF

FLOOR PLAN

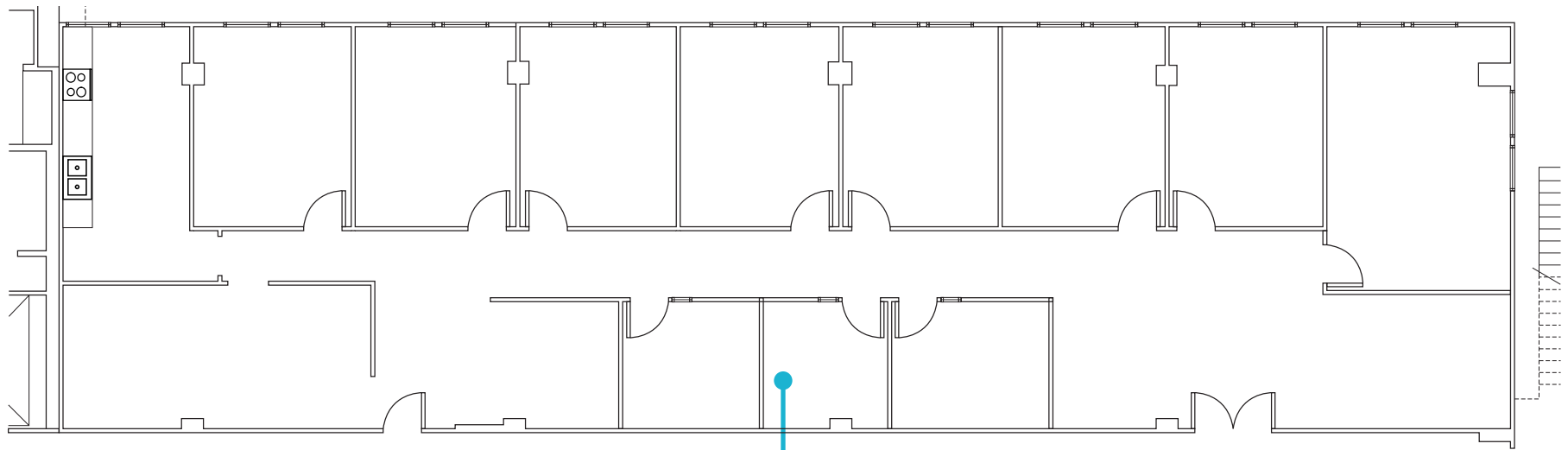
1650



Suite 104
±1,224 SF

FLOOR PLAN

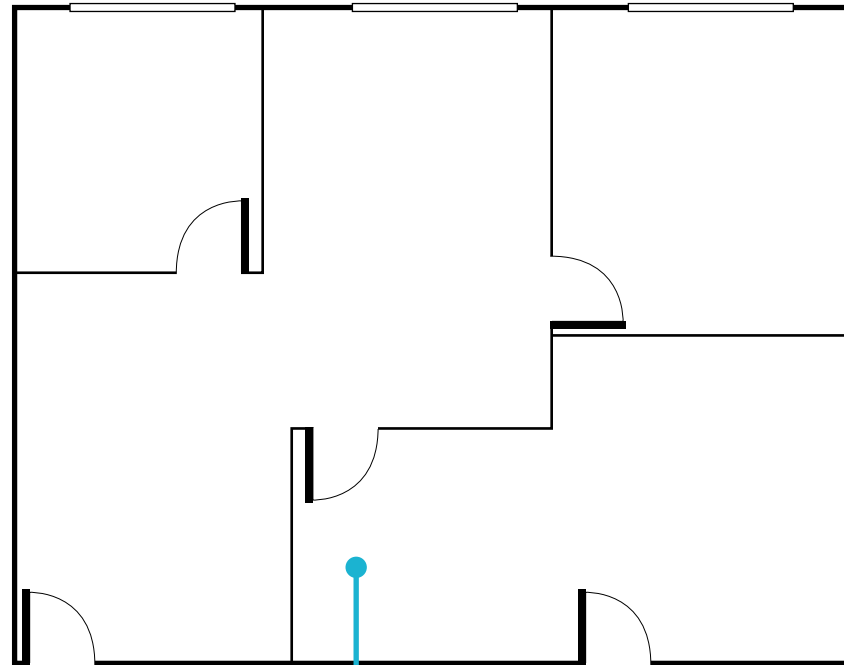
1650



Suite 120
±3,726 SF

FLOOR PLAN

1650

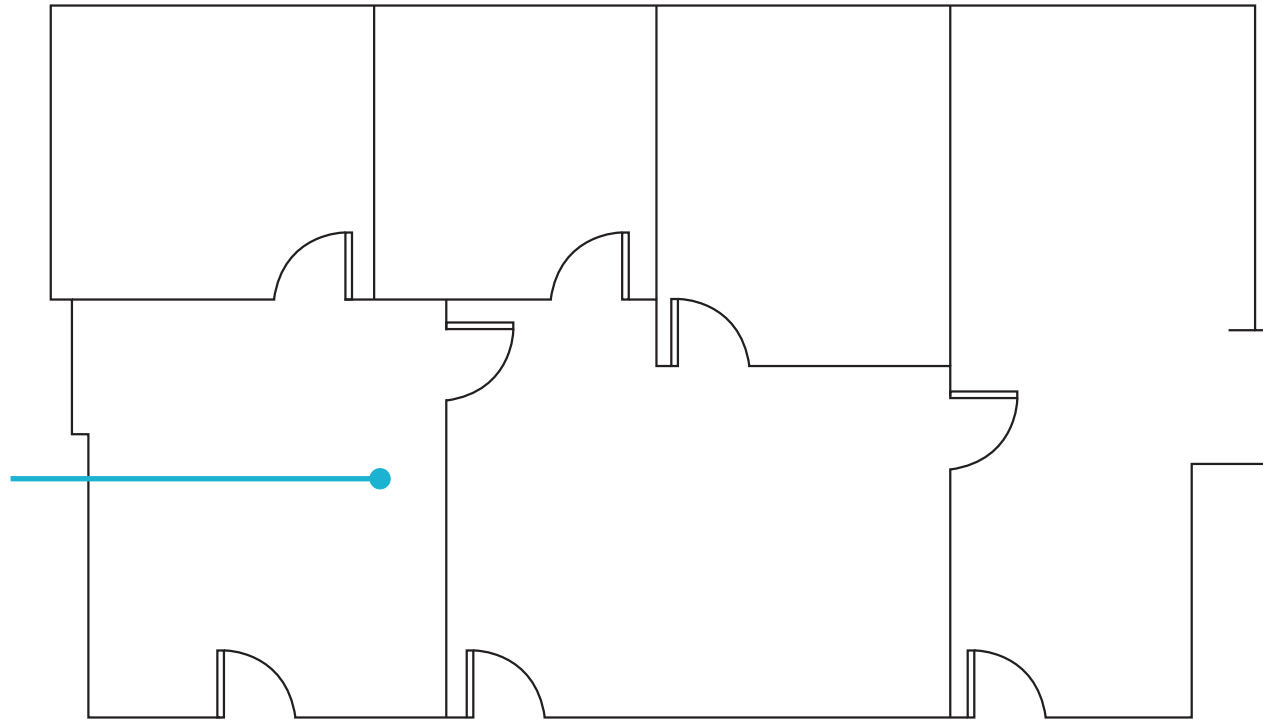


Suite 203
±1,159 SF

FLOOR PLAN

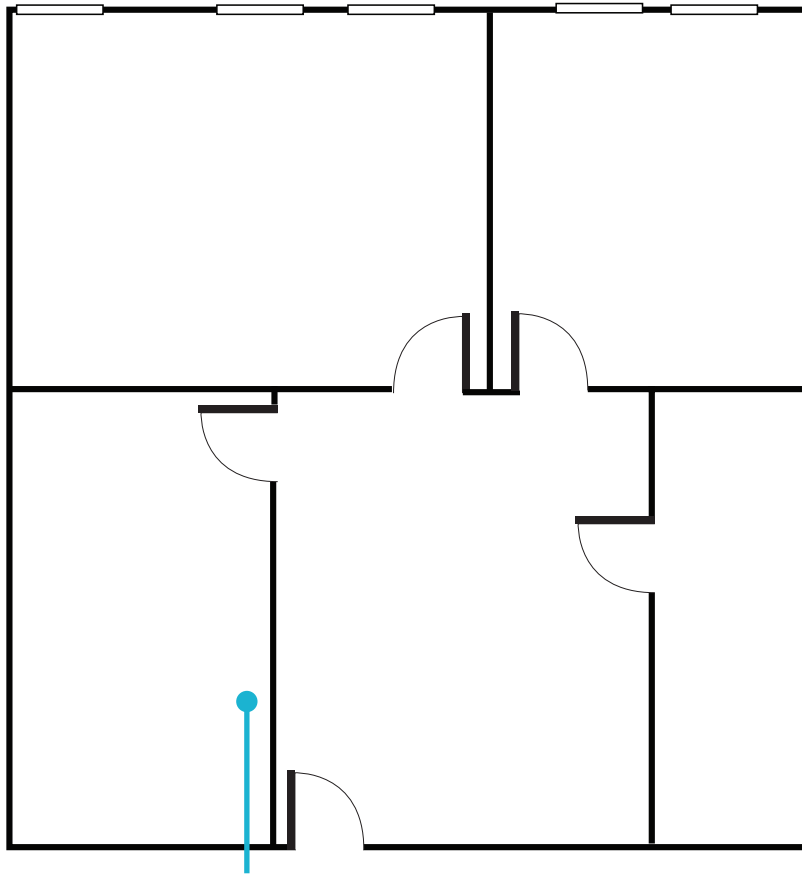
1650

Suite 222
±1,490 SF

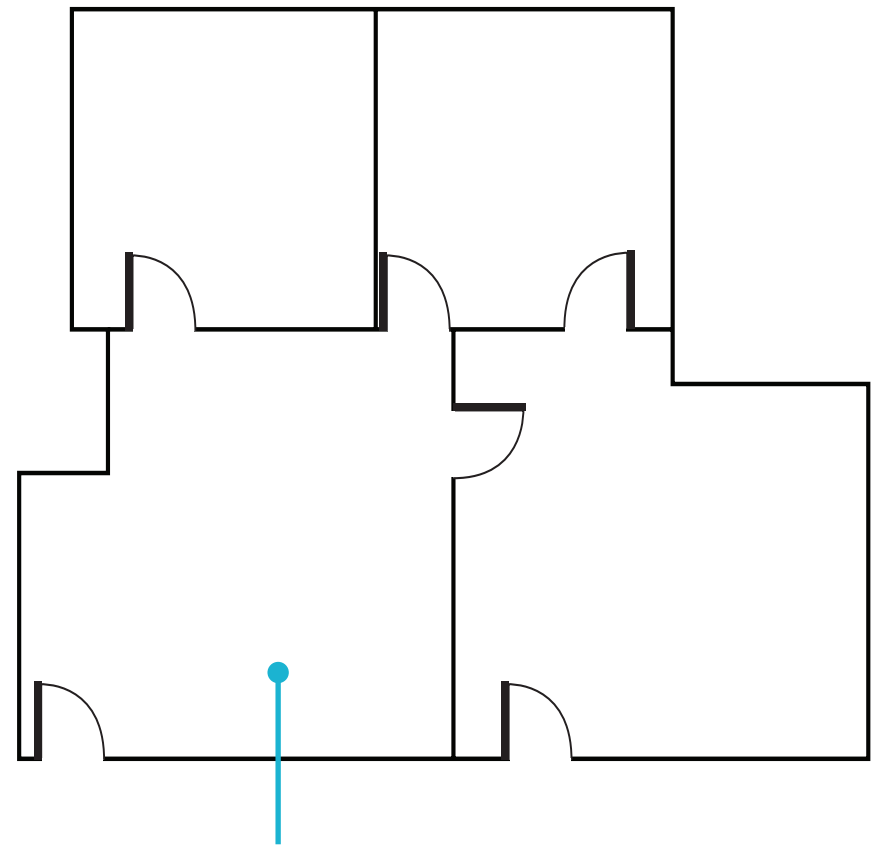


FLOOR PLAN

1650



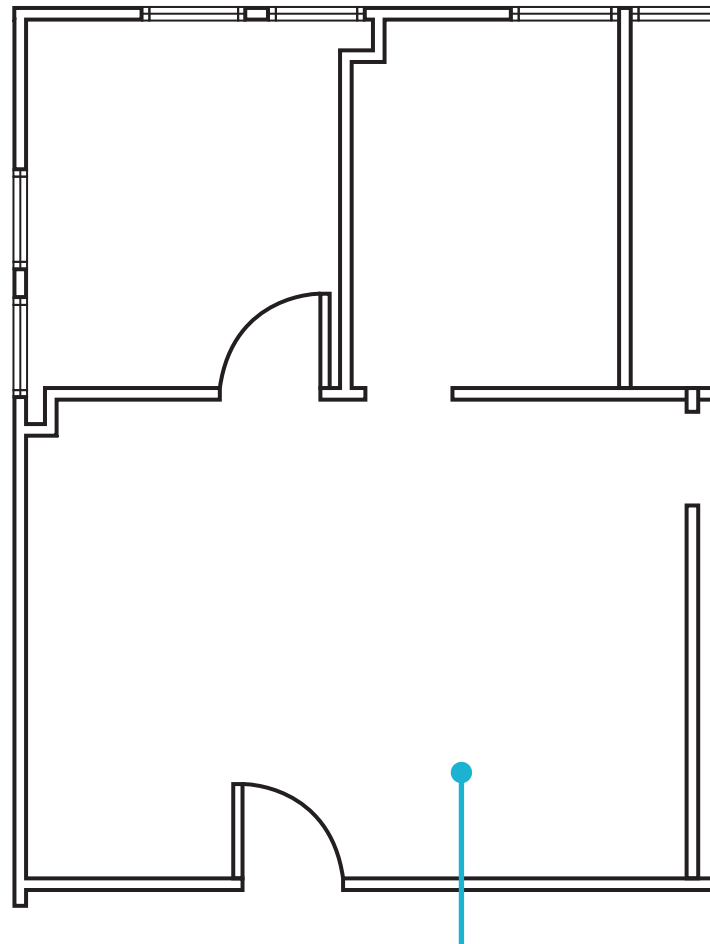
Suite 224
±1,035 SF



Suite 227
±950 SF

FLOOR PLAN

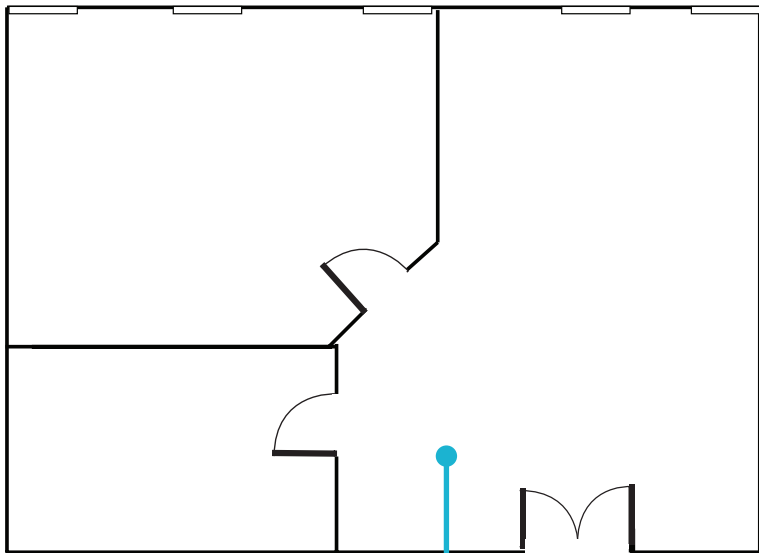
1650



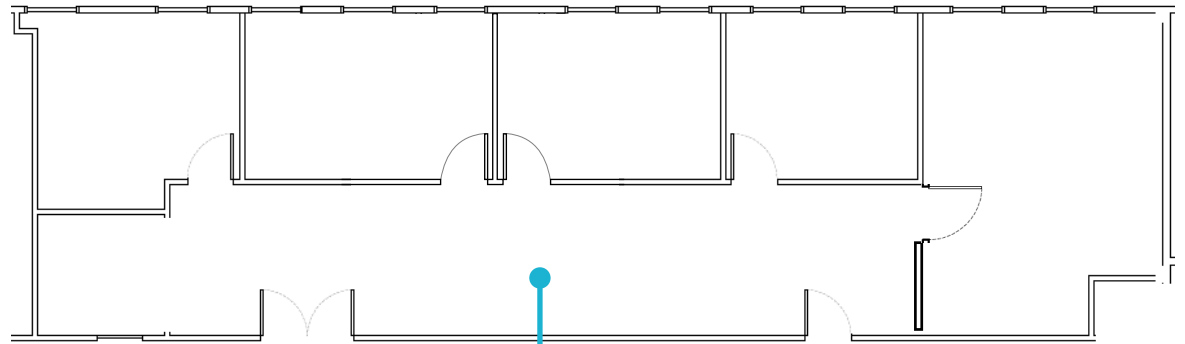
Suite 230
±681 SF

FLOOR PLAN

1777



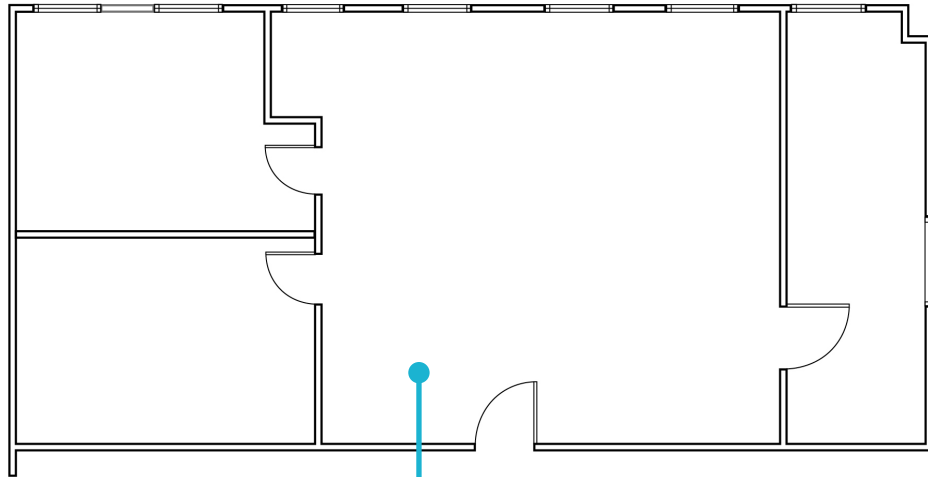
Suite 104
±676 SF



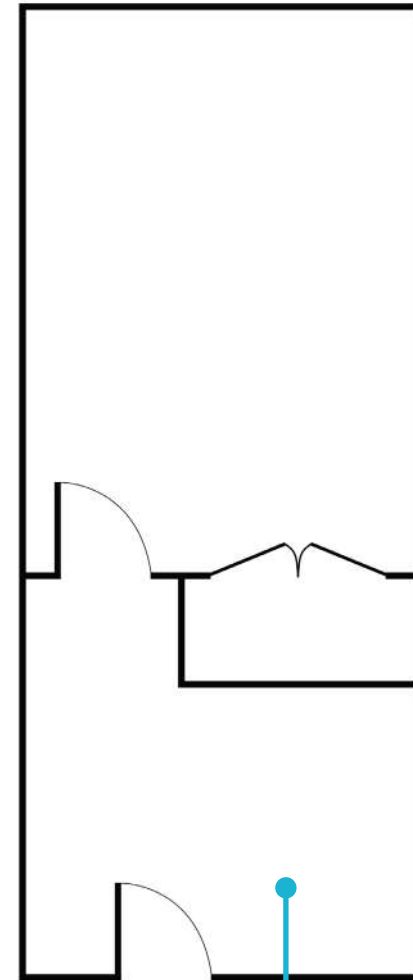
Suite 200
±1,760 SF

FLOOR PLAN

1777



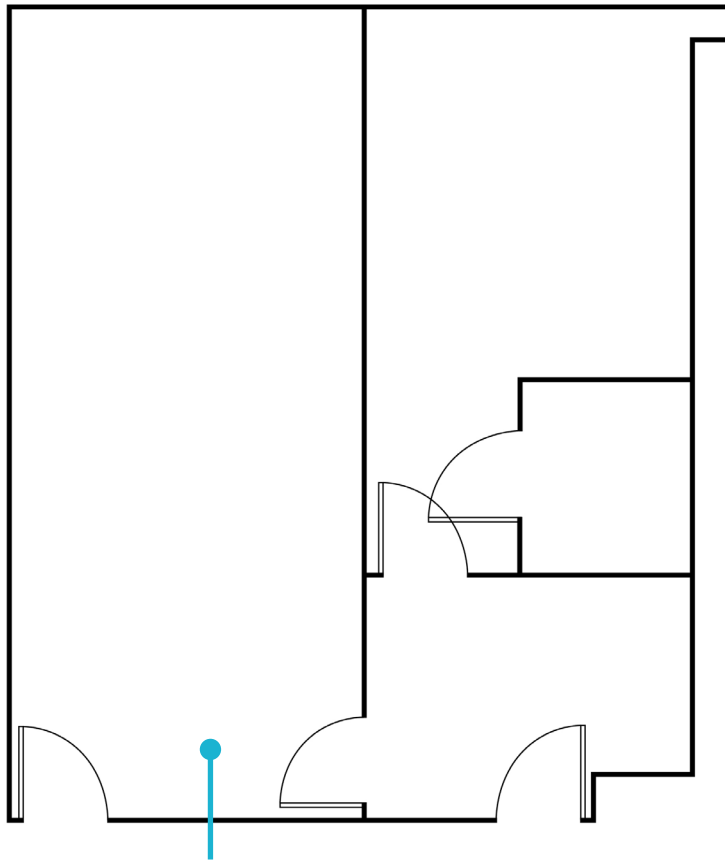
Suite 204
±1,063 SF



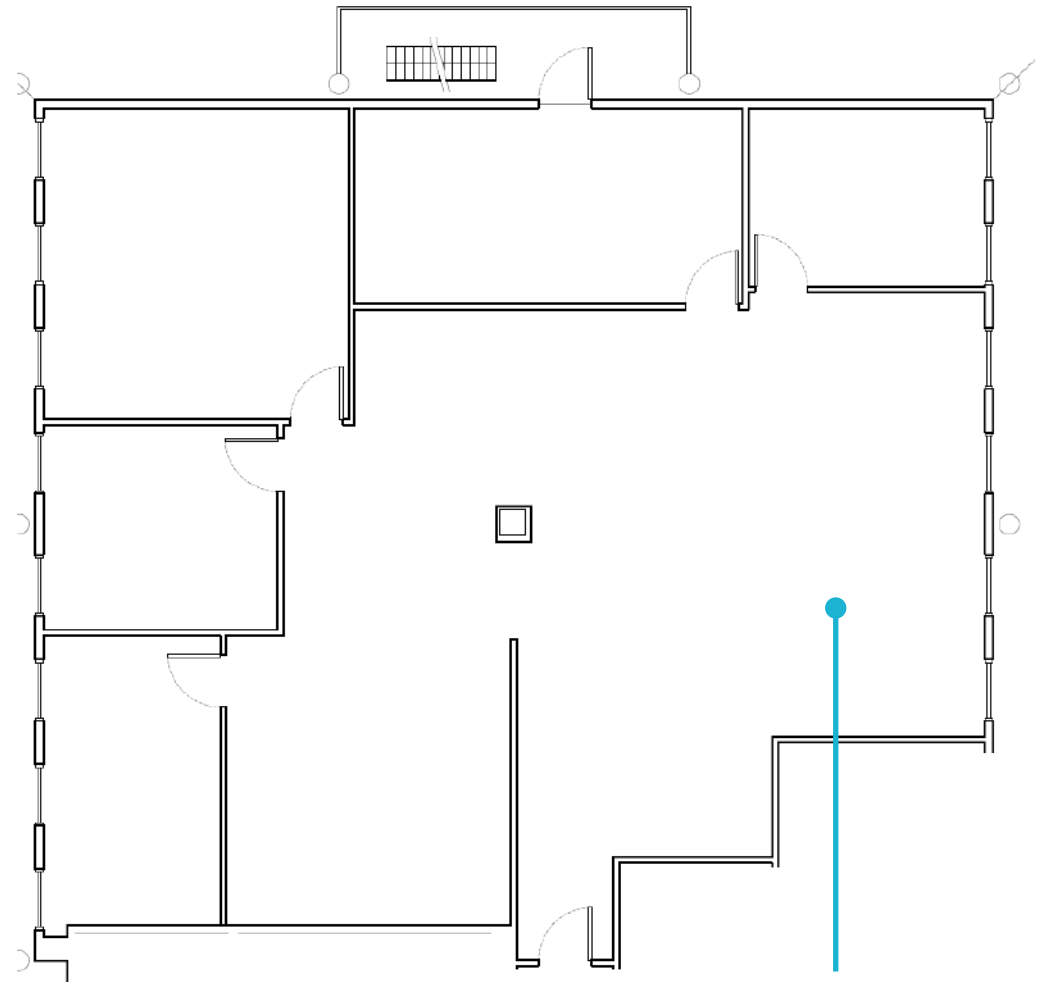
Suite 308
±342 SF

FLOOR PLAN

1777



Suite 420
±715 SF



Suite 500
±2,668 SF



NEWMARK

JOHN KRAFT
Senior Managing Director
650.358.5277
john.kraft@nrmk.com
CA RE License #01787698

MAXX MCGEE
Director
650-358-5265
maxx.mcgee@nrmk.com
CA RE License #02251658

BOREL PLACE
SAN MATEO