



THE LANGHAM ESTATE

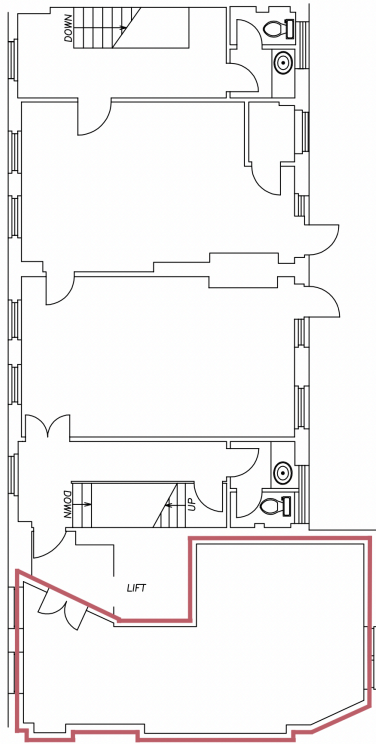
OPEN PLAN OFFICE SUITE

47/50 Margaret Street, London W1

FOURTH FLOOR (WEST) | 355 sq ft / 32.98 m²



FOURTH FLOOR (WEST)



Located on the south side of Margaret Street between Regent Street and Great Portland Street. Transport links are excellent with Oxford Circus Underground Station close by, as are numerous shopping facilities and eateries.

Newly Decorated
Open Plan
Excellent Natural Light
Sash Windows
Wood Flooring
Feature Fireplaces

Central Heating
Perimeter Trunking
LG7 Lighting
Passenger Lift
Entryphone
24 Hour Access

Also Available | 2nd Floor (East) 2,920 sq ft
| 2nd Floor (West) 377 sq ft
| 3rd Floor (West) 390 sq ft

EPC Rating: C

RENT

On application.

LEASE

A new Full Repairing & Insuring Lease is available for a term by arrangement, outside the Landlord & Tenant Act 1954.

POSSESSION

Immediate upon completion of legal formalities.

For further information call

020 7580 5656

LanghamEstate.com | MyNoho.co.uk

MALCOLM COHEN

malcolm.cohen@langhamestate.com

020 7907 4983

07768 156 577

DANIEL YERSON

daniel.yershon@langhamestate.com

020 7907 4986

07731 985 129

Offices | Retail | Restaurants | Showrooms | Residential | Storage



Langham Estate Management Ltd, London House, 9A Margaret Street, London W1W 8RJ

Any property is offered subject to contract, availability, and confirmation of details. These particulars do not form part of any contract and, whilst believed to be correct, parties are recommended to satisfy themselves as to the accuracy. The Lessors or Langham Estate Management Limited, or any person in their employment, cannot make or give any representation or warranty whatsoever in relation to this property. Unless otherwise stated, all prices and rentals quoted are exclusive of any Value Added Tax to which they may be subject. Floorplans are for illustrative purposes only and may not accurately reflect the property's current internal layout.