

45 West Broadway

TRIBECA
NEW YORK, NY



Property Details

Location

East block on the corner of Murray Street

Approximate Size

Ground Floor	4,837 SF
Lower Level	3,038 SF
Mezzanine	894 SF
Total	8,769 SF

Ceiling Height

Ground Floor	12 FT
Lower Level	13 FT 8 IN
Mezzanine	10 FT

Site Status

Formerly a portion of Amish Market

Frontage

120 FT on West Broadway
38 FT on Murray Street

Term

Negotiable

Possession

Immediate

Neighbors

Equinox Fitness Club, Whole Foods Market, Target, Mulberry and Vine, Los Tacos No. 1, Korin, Bluemercury, Le Pain Quotidien and Marshalls

Comments

Half a block of frontage on West Broadway cornering Murray Street

Space can be divided

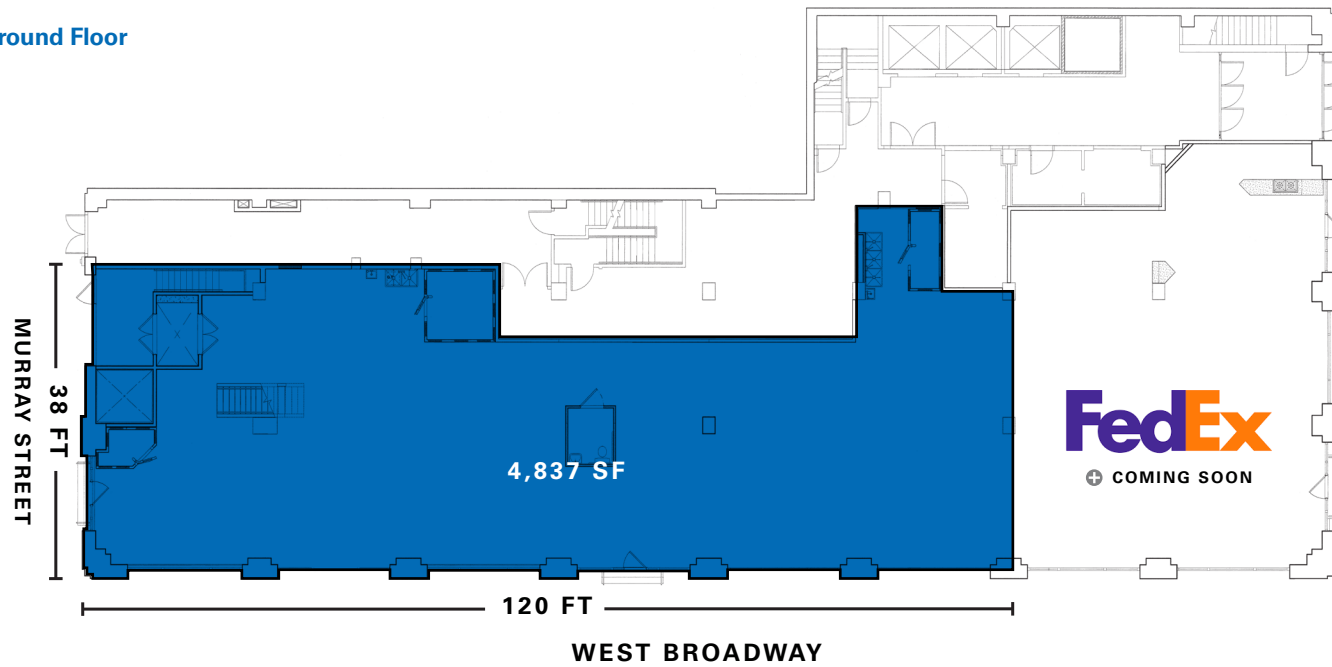
Most uses considered

Located in the most dense residential confluence of the Financial District, Tribeca and Battery Park City with approximately 7,000 residential units and five million SF of office space within 1/4-mile

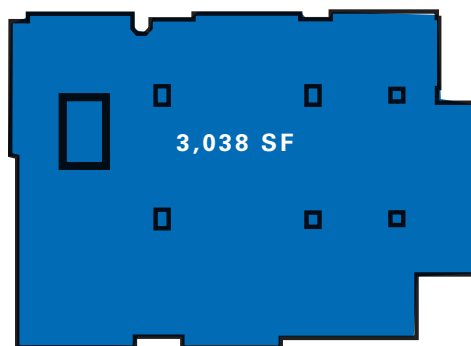
Below Equinox and one block from Target and the #2 NYC Whole Foods

Floor Plans

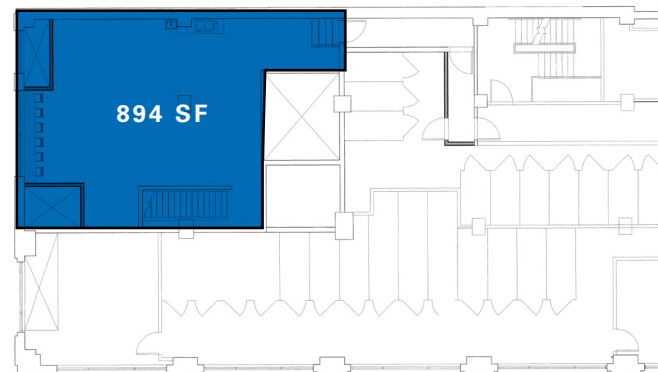
Ground Floor



Lower Level



Mezzanine



45 WEST BROADWAY



- BROOKFIELD PLACE RETAIL**
- BONOBOS
 - BOTTEGA VENETA
 - GUCCI
 - ZEGNA
 - OMEGA
 - Salvatore Ferragamo
 - drybar
 - lululemon
 - athletica
 - Theory
 - CLEAN MARKET

- WESTFIELD WORLD TRADE CENTER RETAIL**
- kate spade
 - TUMI
 - SEPHORA
 - STUART WEITZMAN
 - H&M
 - EATALY
 - UNDER ARMOUR
 - MAC
 - Apple
 - Kiehl's
 - PANDORA
 - UGS
 - MONT BLANC
 - BANANA REPUBLIC
 - BREITLING

CONTACT

Ross Berkowitz
 t 212-916-3388
 ross.berkowitz@nmrk.com

Ariel Schuster
 t 212-331-0132
 ariel.schuster@nmrk.com

Evan Roteman
 t 212-916-2931
 evan.roteman@nmrk.com
nmrk.com

+ COMING SOON