

OFFICE/RETAIL SPACE FOR LEASE



850 REGENT AVENUE W

WINNIPEG, MB



PRESLEY BORDIAN, Vice President, Sales & Leasing
(204) 985-1356
presley.bordian@capitalgrp.ca

RENNIE ZEGALSKI, Principal
(204) 985-1368
rennie.zegalski@capitalgrp.ca
Services provided by Rennie Zegalski Personal Real Estate Corporation

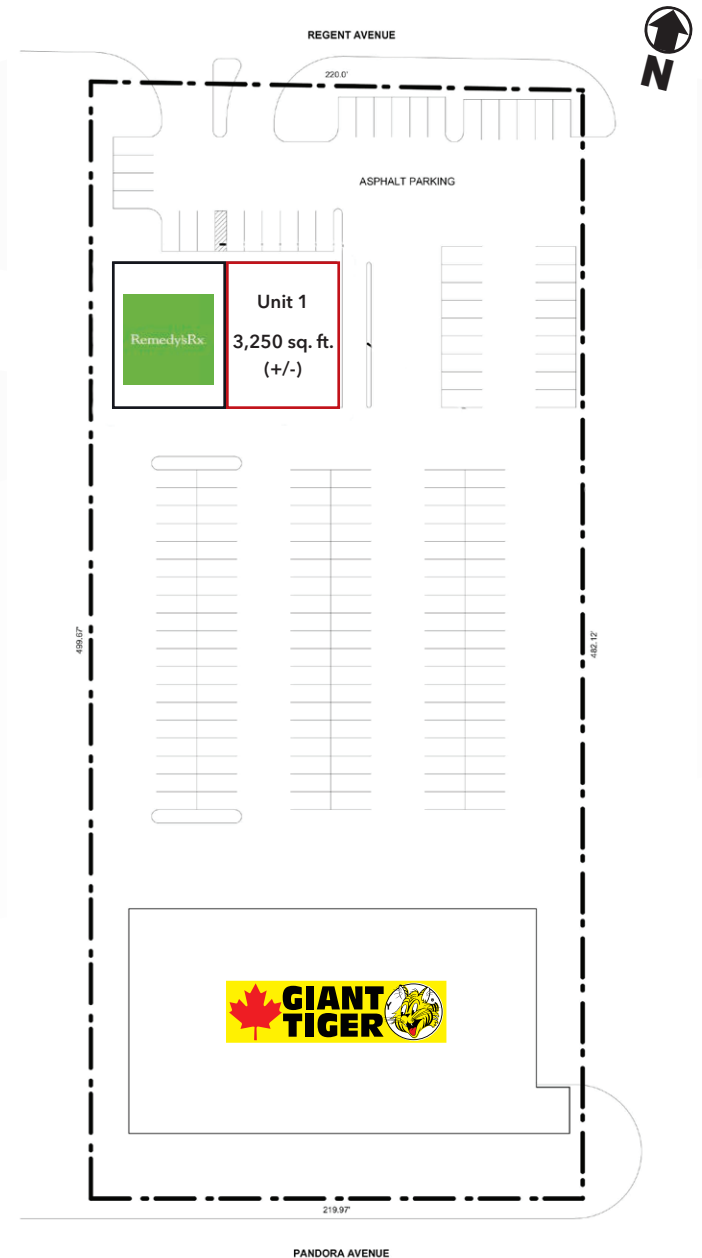
PROPERTY DETAILS

AREA AVAILABLE (+/-)	3,250 sq. ft.
NET RENTAL RATE	\$28.00 per sq. ft.
ADDITIONAL RENT	\$10.73 per sq. ft. (est. 2026) <i>plus 5% mgmt. fee of gross rent (inclusive of water)</i>
MECHANICAL	Two 5 ton RTU's
ELECTRICAL	Panel 100: 225 Amp, 120/208 Volt, 3 Phase, 4-Wire Panel 200: 225 Amp, 120/208 Volt, 3 Phase, 4-Wire
SIGNAGE	Building Signage Pylon signage at \$200/month plus GST
PARKING (+/-)	157 on-site parking stalls
ZONING	C3
TRAFFIC COUNT	36,100 avg. vehicles per day (2024 City of Winnipeg Traffic Flow Map)
AVAILABILITY	September 1, 2026

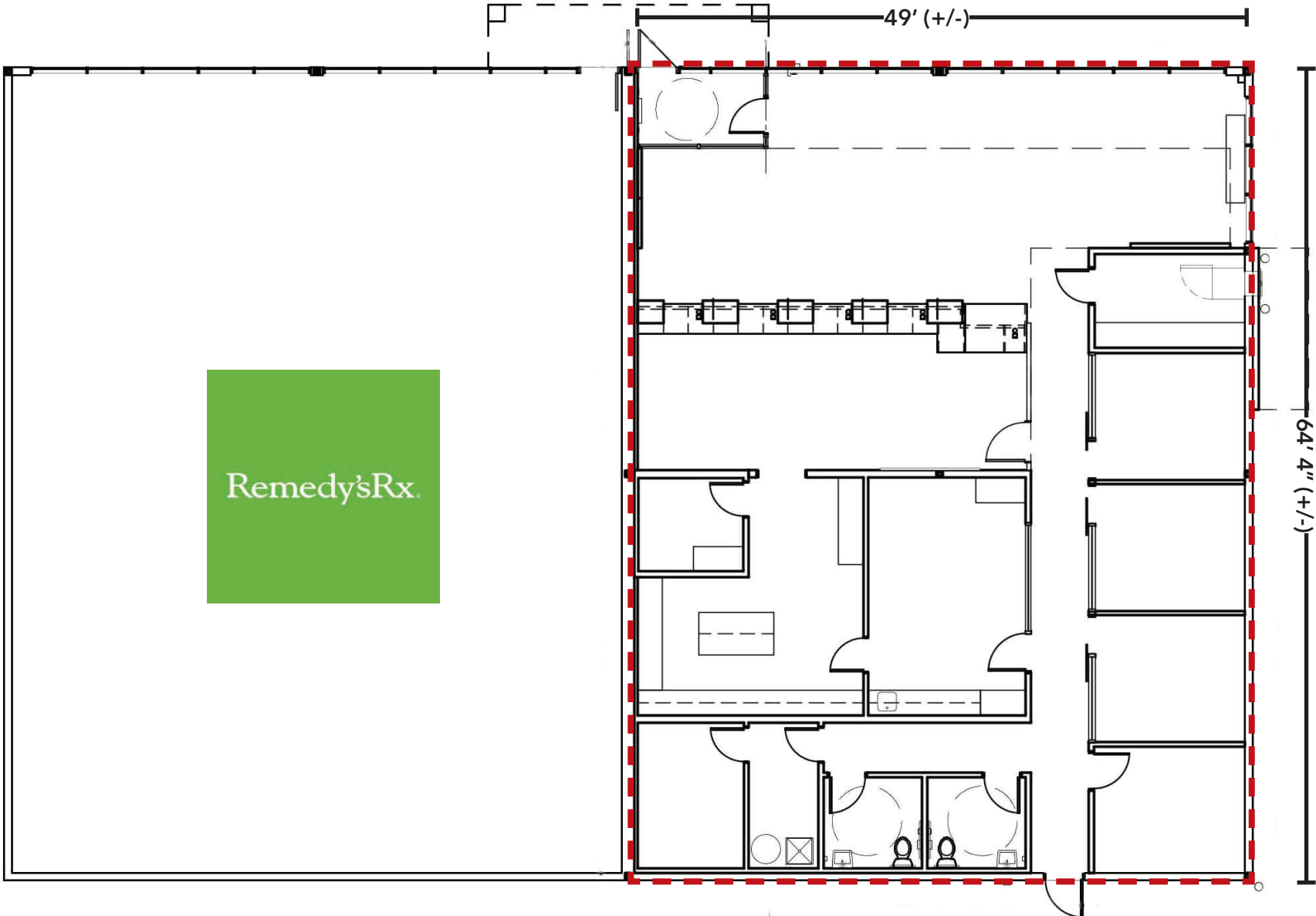
PROPERTY HIGHLIGHTS

- Prominent, end cap unit with **drive thru**
- **Signage opportunities** along north and east facing façade, plus **pylon signage**
- Ample natural light throughout with **new office improvements** in place
- Other tenants include Canad Inns Hotel, Aaltos, Tavern United, Giant Tiger and RemedysRX Careplus Transcona Pharmacy

SITE PLAN



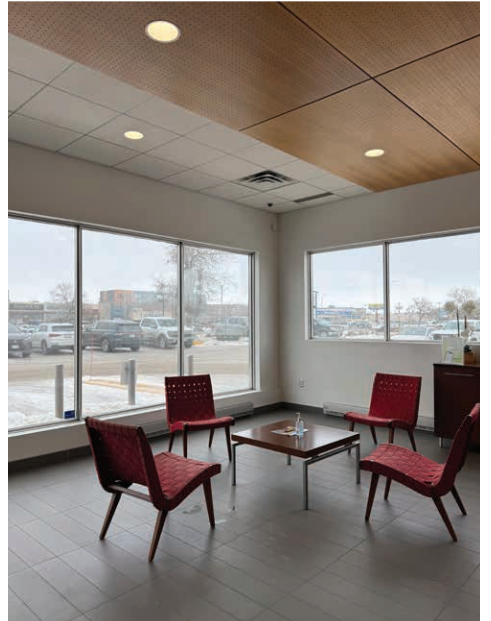
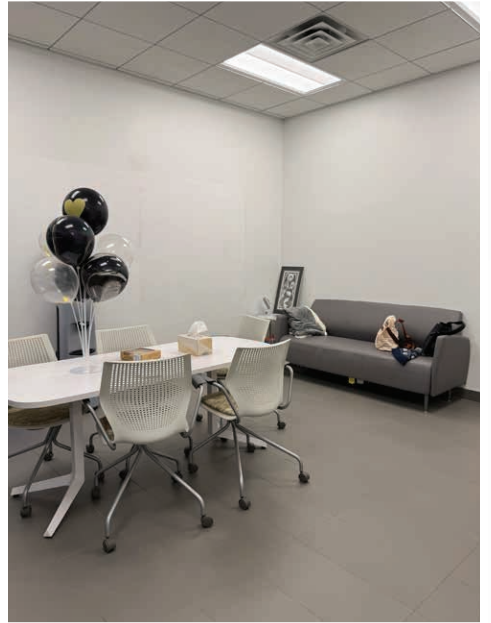
FLOOR PLAN



EXTERIOR PHOTOGRAPHS



INTERIOR PHOTOGRAPHS



AERIAL OVERVIEW



DEMOGRAPHIC ANALYSIS



POPULATION

Total Population

1 km	3 km	5 km
7,388	48,223	105,667

Projected Population (2030)

1 km	3 km	5 km
7,895	50,858	109,631



MEDIAN AGE

Median Age

1 km	3 km	5 km
36.9	36.6	37.2



HOUSEHOLD INCOME

Avg. Household Income

1 km	3 km	5 km
\$117,948	\$112,401	\$112,250

Proj. Household Income (2030)

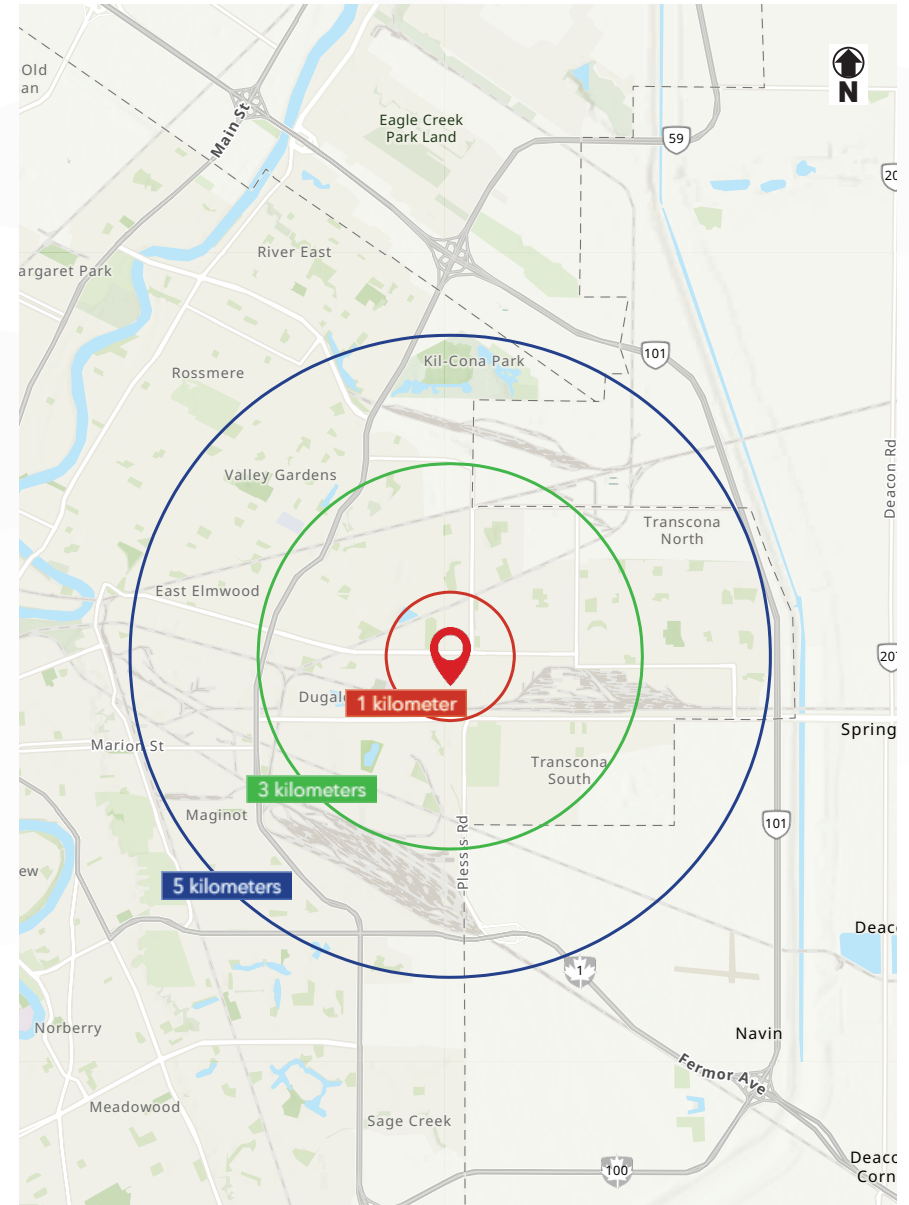
1 km	3 km	5 km
\$137,343	\$130,068	\$129,626



HOUSEHOLDS

Total Households

1 km	3 km	5 km
2,640	17,574	38,648





COMMERCIAL REAL ESTATE
SERVICES INC.

Contact

PRESLEY BORDIAN, Vice President, Sales & Leasing

(204) 985-1356

presley.bordian@capitalgrp.ca

RENNIE ZEGALSKI, Principal

(204) 985-1368

rennie.zegalski@capitalgrp.ca

Services provided by Rennie Zegalski Personal Real Estate Corporation

CAPITAL COMMERCIAL REAL ESTATE SERVICES INC.

300-570 Portage Avenue, Winnipeg, MB R3C 0G4 | T (204) 943-5700 | F (204) 956-2783 | capitalgrp.ca

Disclaimer: Capital Commercial Real Estate Services Inc. ("Capital") does not accept or assume any responsibility or liability, direct or consequential, for the information set out herein, including, without limitation, any projections, images, opinions, assumptions and estimates obtained from third parties. This information has not been verified by Capital, and Capital does not guarantee the accuracy, correctness and completeness of this information. The recipient of this information should take such steps as the recipient may deem necessary to verify the information in this document prior to placing any reliance upon it. The information may change and any property described in this document may be withdrawn from the market at any time without notice or obligation to the recipient from Capital.