



**FOR LEASE**

RETAIL PROPERTY

# Former Sears & Auto Center

2180 Eastridge Loop  
San Jose, CA 95122

**LEASE RATE: \$2.50 SF/MONTH**



**Jeffrey Helm**

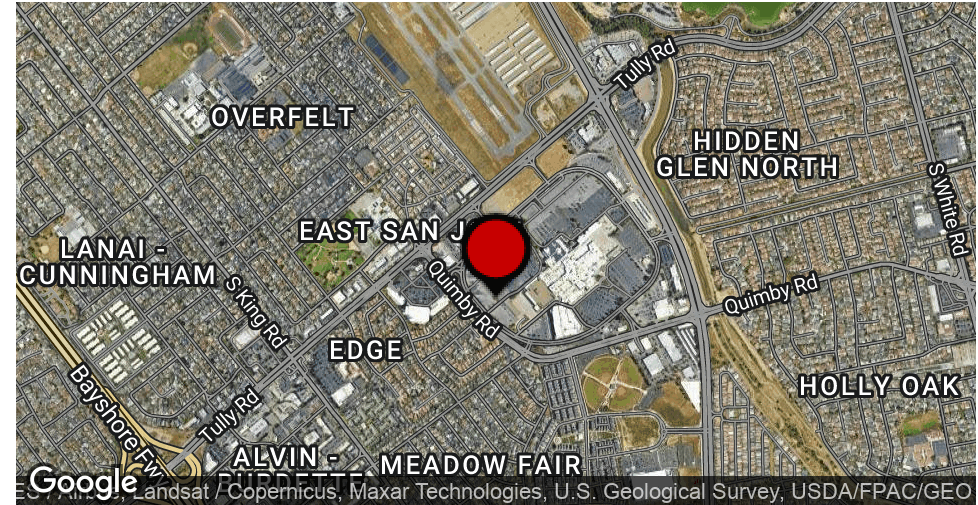
Broker  
CalDRE #01428618  
949.624.0630  
jeff@helmre.com

The calculations and data presented are deemed to be accurate, but not guaranteed. They are intended for the purpose of illustrative projections and analysis. The information provided is not intended to replace or serve as substitute for any legal, accounting, investment, real estate, tax or other professional advice, consultation or service. The user of this software should consult with a professional in the respective legal, accounting, tax or other professional area before making any decisions.

# Executive Summary

## Former Sears & Auto Center

2180 Eastridge Loop, San Jose, CA 95122



### OFFERING SUMMARY

<b>Lease Rate:</b>	\$2.50 SF/month (NNN)
<b>Available SF:</b>	271,412 SF
<b>Lot Size:</b>	21.89 Acres
<b>Year Built:</b>	1971
<b>Zoning:</b>	CG
<b>Market:</b>	South Bay/San Jose
<b>Submarket:</b>	East San Jose-Willow Glen
<b>Traffic Count:</b>	59,656
<b>Zoning Uses:</b>	<a href="#">Click here - Zoning Uses</a>

### PROPERTY OVERVIEW

The former Sears Auto Center site at 2180 Eastridge Loop in San Jose, CA is a prime commercial property located in a high-traffic area. The large, flat lot is approximately 1.5 acres and is zoned for a variety of commercial uses. The property features a 14,617-square-foot first floor and an 11,335-square-foot basement, providing ample space for a wide range of businesses. Additionally, the opportunity to lease the neighboring 245,460 square feet is available, with lease options available as small as 80,000 square feet, allowing for flexibility and scalability for any business. The property is easily accessible via major thoroughfares and is close to many amenities, including shopping centers and restaurants. This is an ideal location for a retail development, a car dealership, or a service-oriented business. With its high visibility and convenient location, this property presents a great opportunity for a business looking to establish a presence in the San Jose area. Call broker to discuss possibilities of larger leasable areas

### PROPERTY HIGHLIGHTS

- Scalable square footage as small as 14,617 up to 245,460 SF
- High visibility on two major thoroughfares
- Large basement (80,000 SF) with loading dock access. Provides an extra level of security to protect against theft.
- Ample parking with the ability to add additional SF or pads

### Jeffrey Helm

Broker

CalDRE #01428618

949.624.0630

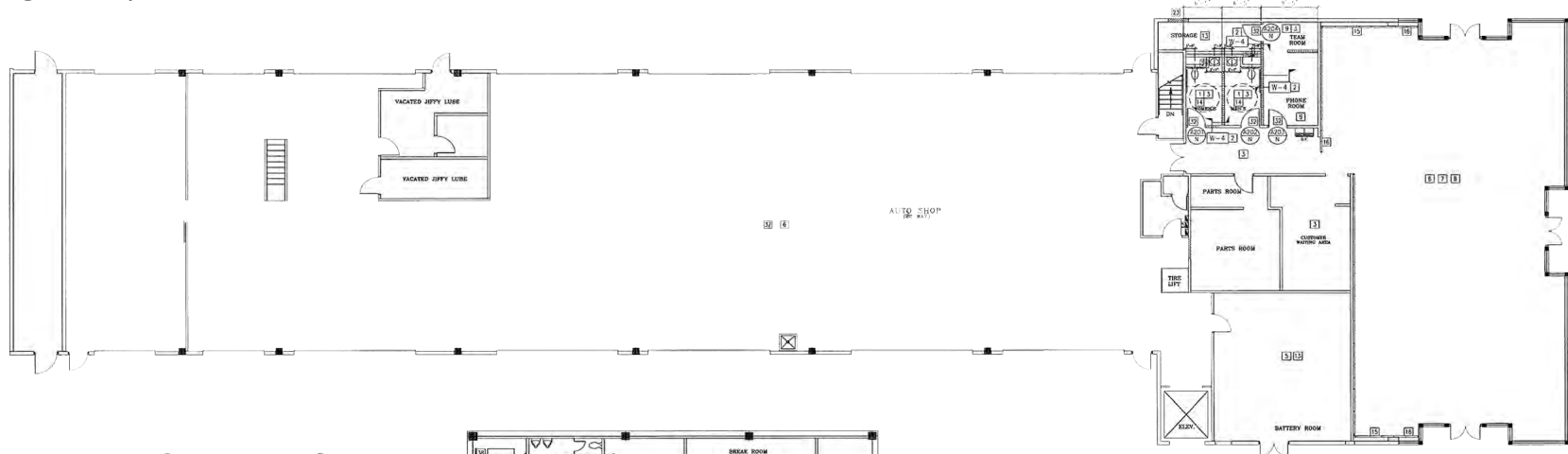
[jeff@helmre.com](mailto:jeff@helmre.com)

The calculations and data presented are deemed to be accurate, but not guaranteed. They are intended for the purpose of illustrative projections and analysis. The information provided is not intended to replace or serve as substitute for any legal, accounting, investment, real estate, tax or other professional advice, consultation or service. The user of this software should consult with a professional in the respective legal, accounting, tax or other professional area before making any decisions.

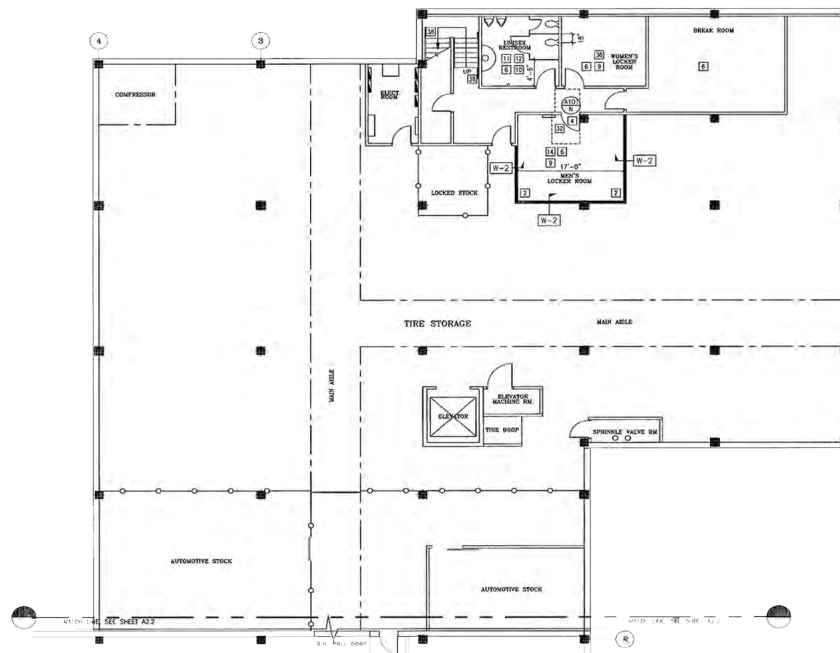
# Auto Center - Floor Plan

## Former Sears & Auto Center

2180 Eastridge Loop, San Jose, CA 95122



AUTOCENTER NEW MAIN FLOOR PLAN



AUTOCENTER BASEMENT NEW FLOOR PLAN

Main Floor: 14,617 SF  
Basement Floor: 11,335 SF

**Jeffrey Helm**

Broker

CalDRE #01428618

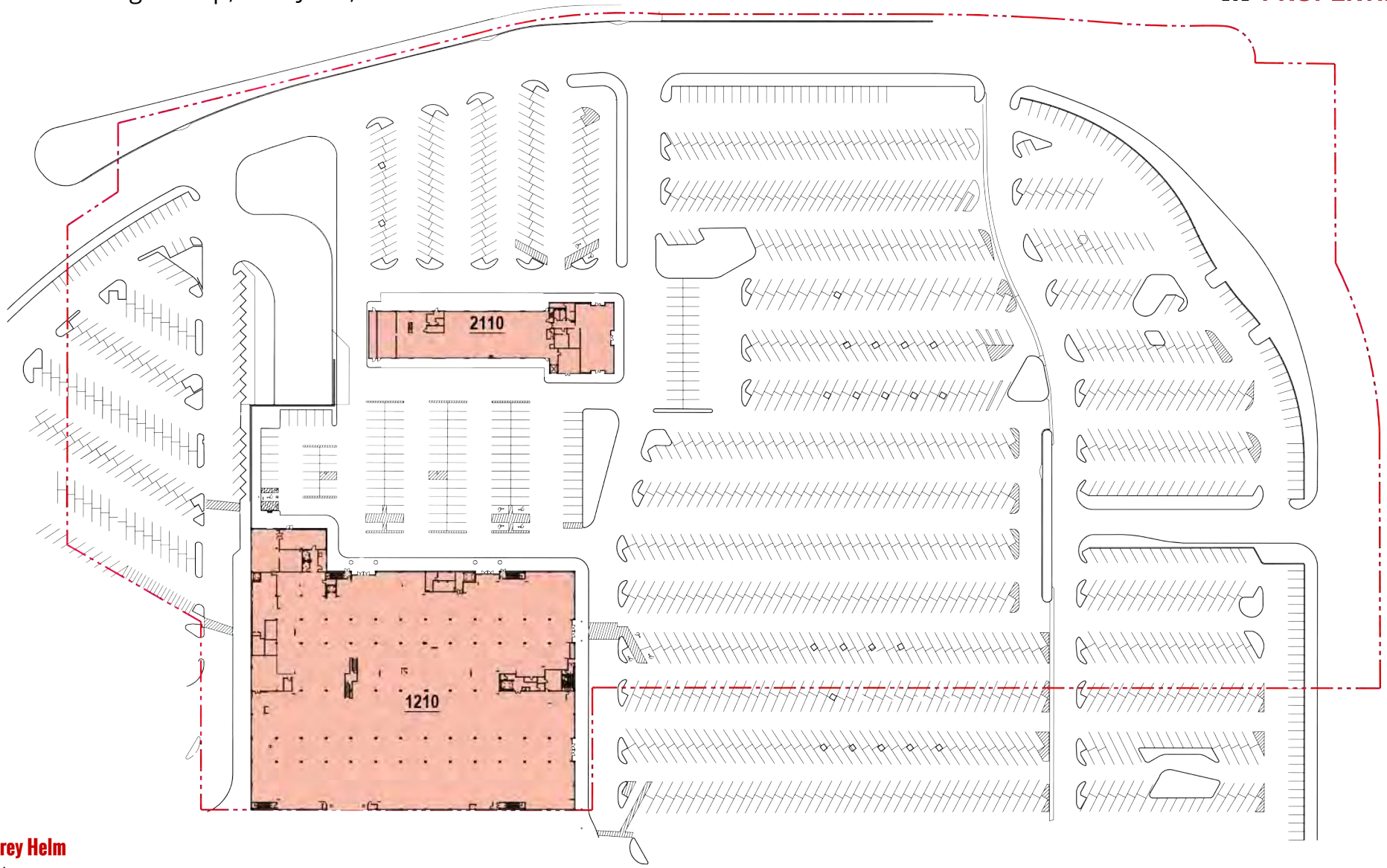
949.624.0630

jeff@helmre.com

The calculations and data presented are deemed to be accurate, but not guaranteed. They are intended for the purpose of illustrative projections and analysis. The information provided is not intended to replace or serve as substitute for any legal, accounting, investment, real estate, tax or other professional advice, consultation or service. The user of this software should consult with a professional in the respective legal, accounting, tax or other professional area before making any decisions.

## Former Sears & Auto Center

2180 Eastridge Loop, San Jose, CA 95122



### Jeffrey Helm

Broker

CalDRE #01428618

949.624.0630

jeff@helmre.com

The calculations and data presented are deemed to be accurate, but not guaranteed. They are intended for the purpose of illustrative projections and analysis. The information provided is not intended to replace or serve as substitute for any legal, accounting, investment, real estate, tax or other professional advice, consultation or service. The user of this software should consult with a professional in the respective legal, accounting, tax or other professional area before making any decisions.

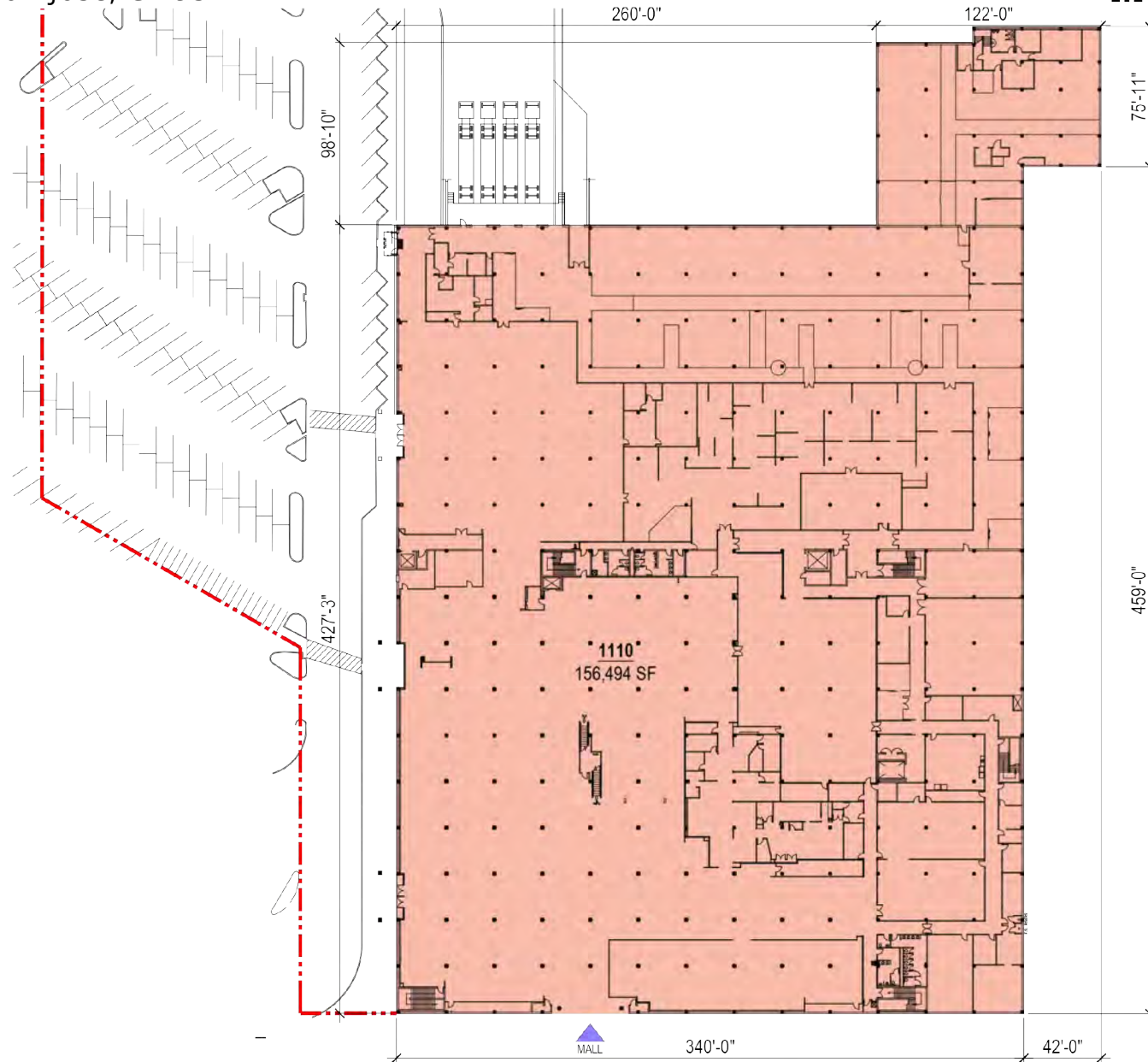
# Former Sears - 1st Floor

## Former Sears & Auto Center

2180 Eastridge Loop, San Jose, CA 95122



## Former Sears First Level



### Jeffrey Helm

Broker

CalDRE #01428618

949.624.0630

jeff@helmre.com

The calculations and data presented are deemed to be accurate, but not guaranteed. They are intended for the purpose of illustrative projections and analysis. The information provided is not intended to replace or serve as substitute for any legal, accounting, investment, real estate, tax or other professional advice, consultation or service. The user of this software should consult with a professional in the respective legal, accounting, tax or other professional area before making any decisions.

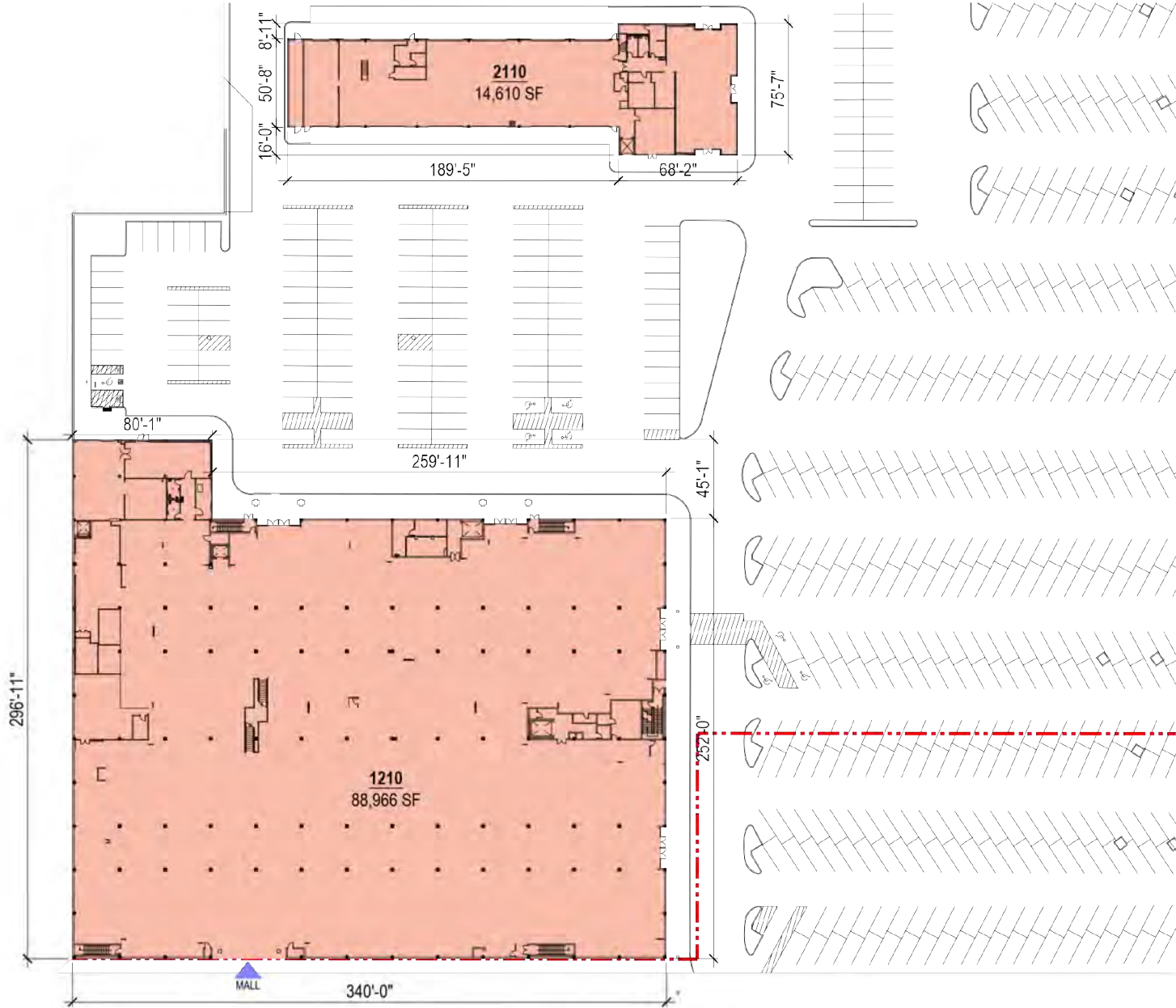
# Former Sears - 2nd Level

## Former Sears & Auto Center

2180 Eastridge Loop, San Jose, CA 95122



## Former Sears Second Level



### Jeffrey Helm

Broker

CalDRE #01428618

949.624.0630

jeff@helmre.com

The calculations and data presented are deemed to be accurate, but not guaranteed. They are intended for the purpose of illustrative projections and analysis. The information provided is not intended to replace or serve as substitute for any legal, accounting, investment, real estate, tax or other professional advice, consultation or service. The user of this software should consult with a professional in the respective legal, accounting, tax or other professional area before making any decisions.

# Additional Photos

## Former Sears & Auto Center

2180 Eastridge Loop, San Jose, CA 95122



### Jeffrey Helm

Broker

CalDRE #01428618

949.624.0630

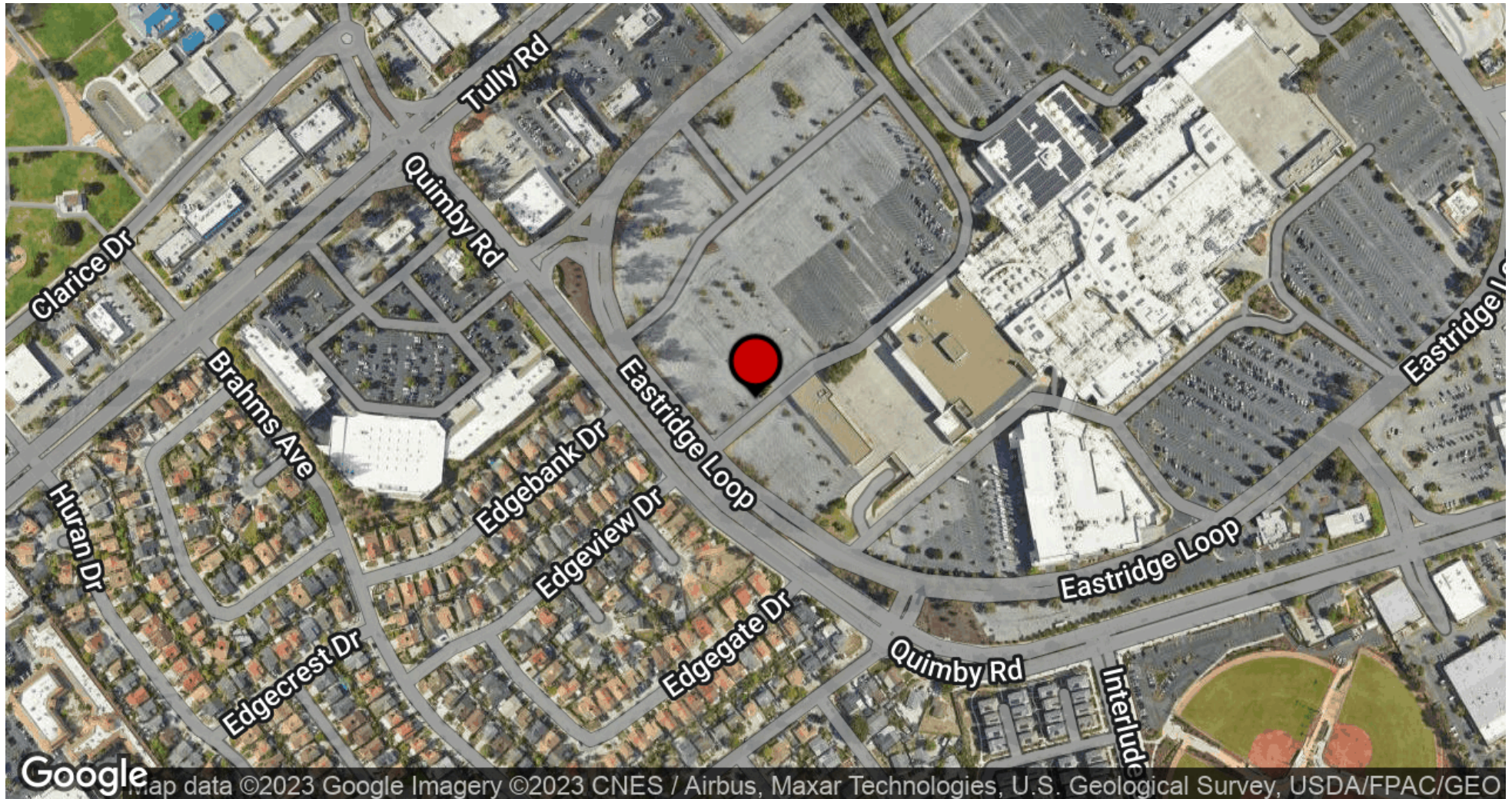
jeff@helmre.com

The calculations and data presented are deemed to be accurate, but not guaranteed. They are intended for the purpose of illustrative projections and analysis. The information provided is not intended to replace or serve as substitute for any legal, accounting, investment, real estate, tax or other professional advice, consultation or service. The user of this software should consult with a professional in the respective legal, accounting, tax or other professional area before making any decisions.

# Location Map

## Former Sears & Auto Center

2180 Eastridge Loop, San Jose, CA 95122



### Jeffrey Helm

Broker

CalDRE #01428618

949.624.0630

jeff@helmre.com

The calculations and data presented are deemed to be accurate, but not guaranteed. They are intended for the purpose of illustrative projections and analysis. The information provided is not intended to replace or serve as substitute for any legal, accounting, investment, real estate, tax or other professional advice, consultation or service. The user of this software should consult with a professional in the respective legal, accounting, tax or other professional area before making any decisions.

# Demographics Map & Report

## Former Sears & Auto Center

2180 Eastridge Loop, San Jose, CA 95122

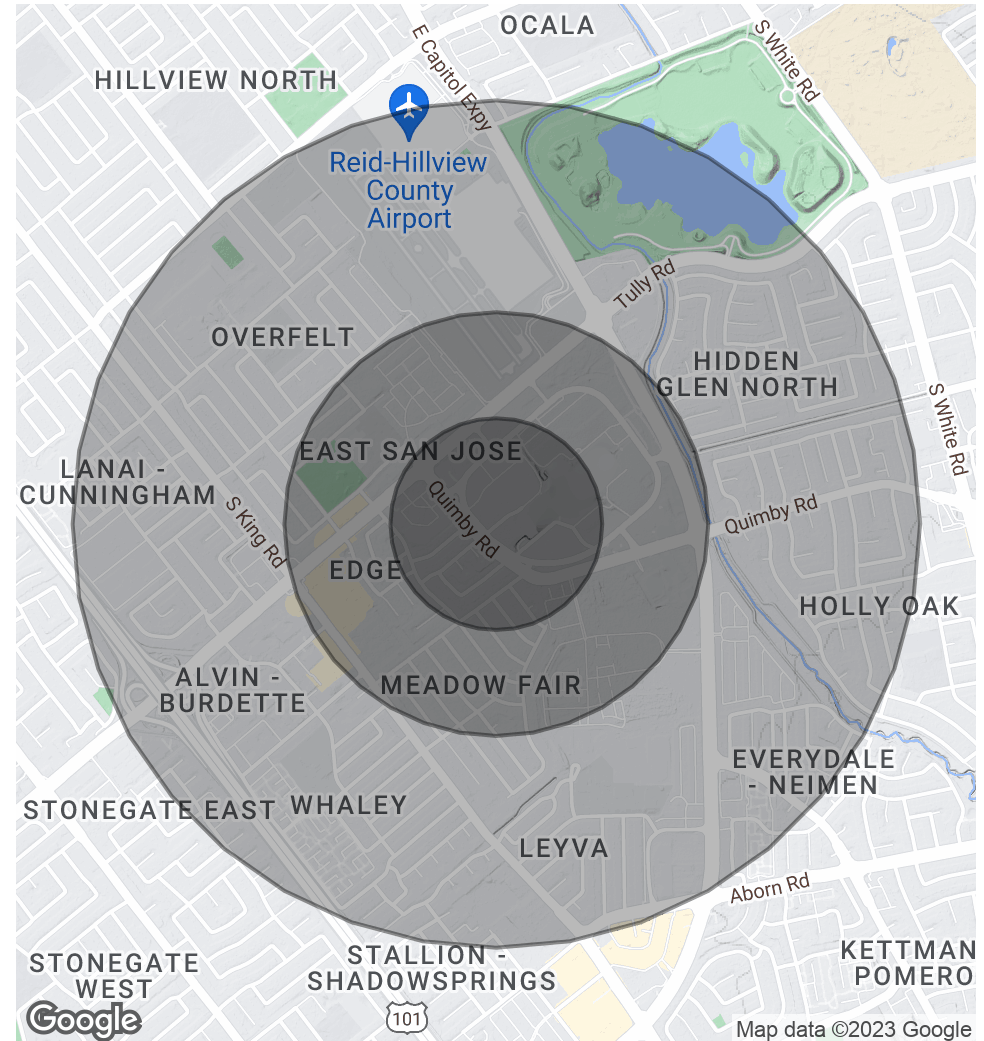


POPULATION	0.25 MILES	0.5 MILES	1 MILE
Total Population	1,303	6,058	27,725
Average Age	35.5	35.4	37.4
Average Age (Male)	32.4	33.1	35.3
Average Age (Female)	48.2	41.2	40.3

HOUSEHOLDS & INCOME	0.25 MILES	0.5 MILES	1 MILE
Total Households	341	1,481	6,640
# of Persons per HH	3.8	4.1	4.2
Average HH Income	\$97,101	\$121,057	\$127,109
Average House Value	\$715,835	\$721,396	\$708,745

RACE	0.25 MILES	0.5 MILES	1 MILE
% White	19.8%	20.5%	23.1%
% Black	0.3%	0.3%	1.6%
% Asian	69.0%	64.1%	56.0%
% Hawaiian	0.5%	0.8%	0.5%
% American Indian	0.0%	0.1%	0.4%
% Other	8.4%	10.5%	14.4%

\* Demographic data derived from 2020 ACS - US Census



### Jeffrey Helm

Broker

CalDRE #01428618

949.624.0630

jeff@helmre.com

The calculations and data presented are deemed to be accurate, but not guaranteed. They are intended for the purpose of illustrative projections and analysis. The information provided is not intended to replace or serve as substitute for any legal, accounting, investment, real estate, tax or other professional advice, consultation or service. The user of this software should consult with a professional in the respective legal, accounting, tax or other professional area before making any decisions.