



ONE GLOVER
2121 WISCONSIN, N.W.

2121 Wisconsin, N.W.

AN ELEVATED OFFICE EXPERIENCE

Delivering 2023



PRIME GLOVER PARK

location

One Glover is a six-story, 110,000 SF office building nestled in the heart of Glover Park, a bustling neighborhood with plenty to eat and explore.

Tenants enjoy expansive views of the Washington Monument and the National Cathedral.



ENJOY CONVENIENT *access*



Parking
Garage



Courtyard



Renovated
Lobby



Accessibility



River
Views



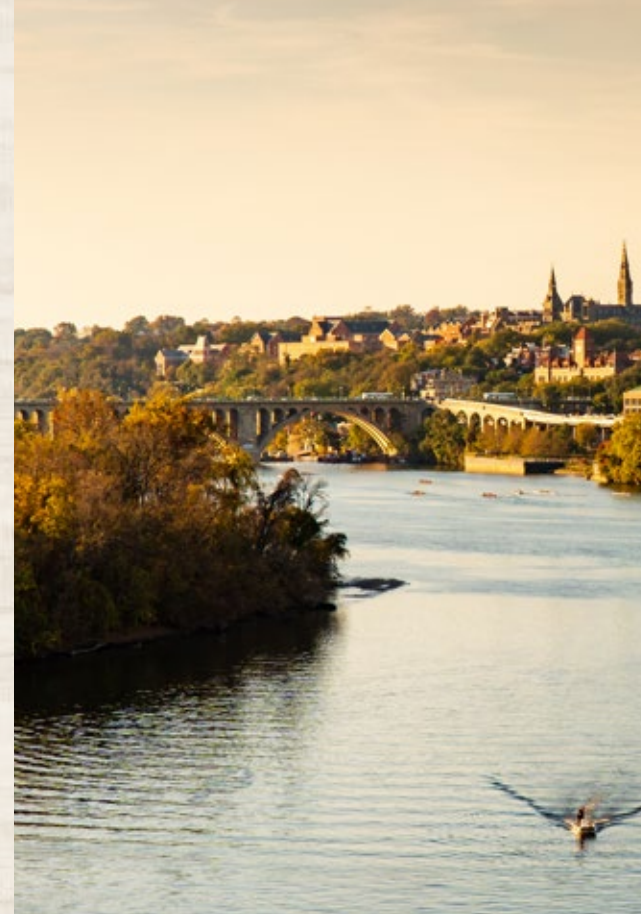
Balance
Gym



In the Heart
of Glover Park



Wisconsin Ave
Retail Nearby



ACTIVE

lifestyle

ABUNDANT RETAIL IN THE NEIGHBORHOOD

Arts & Entertainment

Dumbarton Oaks
Glover Park Hotel Georgetown
Tudor Place Historic House & Garden
Taste of Georgetown

Bakeries

Patisserie Poupon
Fresh Baguette
Breadsoda
The Fountain Inn
Janti Cafe

Health Clubs/Gyms

CVS Pharmacy
Balance Gym Glover Park

Restaurants & Retail

PhoWheels
Dumplings & Beyond
Simply Banh Mi
Sprig and Sprout: Pho and Viet Sandwich Shop
Old Europe
Wingo's
Shanghai Lounge
Bistrot Lepic & Wine Bar
Erkin's Uyghur Cuisine
Rocklands Barbeque and Grilling
Cafe Divan
Jaco Juice and Taco Bar
Sushi Keiko
Paisano's
Glover Park Grill
Lavazza
Pizza Movers and Calzones
Marios Trattoria
All About Burger

Shopping

Glover Park Ace Hardware
Georgetown Massage and Bodywork
Market Street Diamonds
Everard's Clothing
Lovely Bride
Field English Custom Tailors



ONE GLOVER
2121 WISCONSIN, N.W.



15 FOOT CEILLINGS

Floor Plans

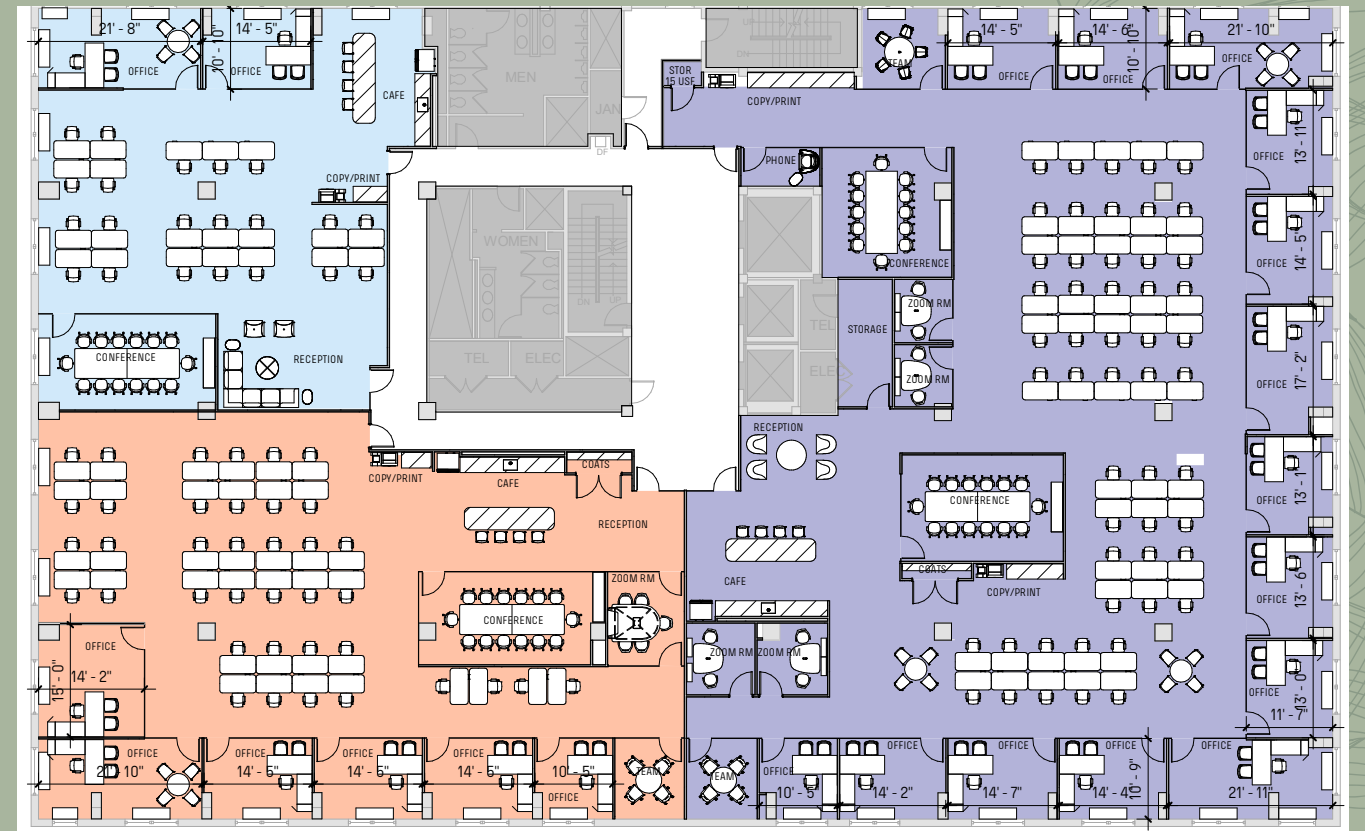
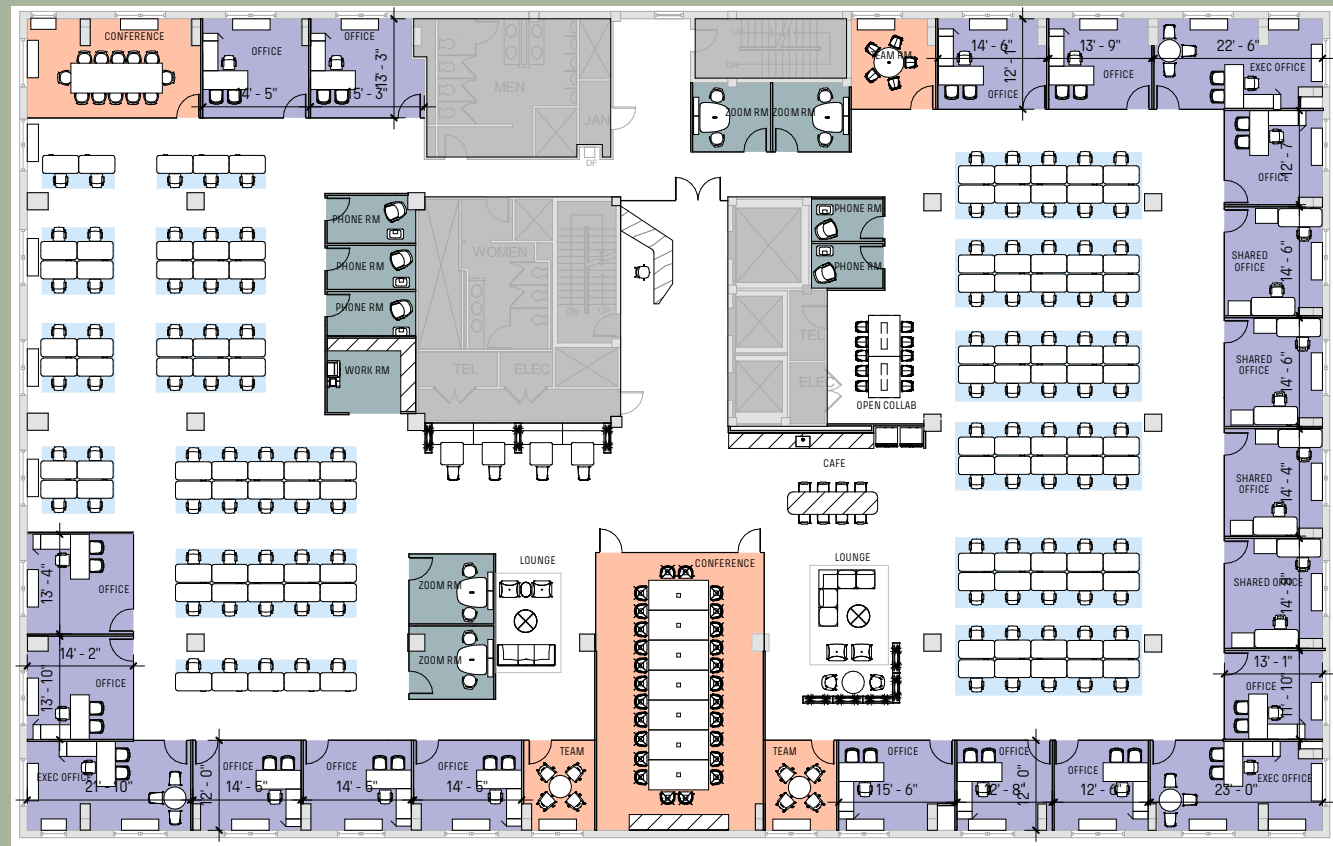


FULL 4TH FLOOR
20,322 SF

SINGLE TEST FIT

VIEW VIRTUAL TOUR HERE

MULTI TEST FIT



Views Into
Naval
Observatory

4

Sides of Glass



Incredible
River Views

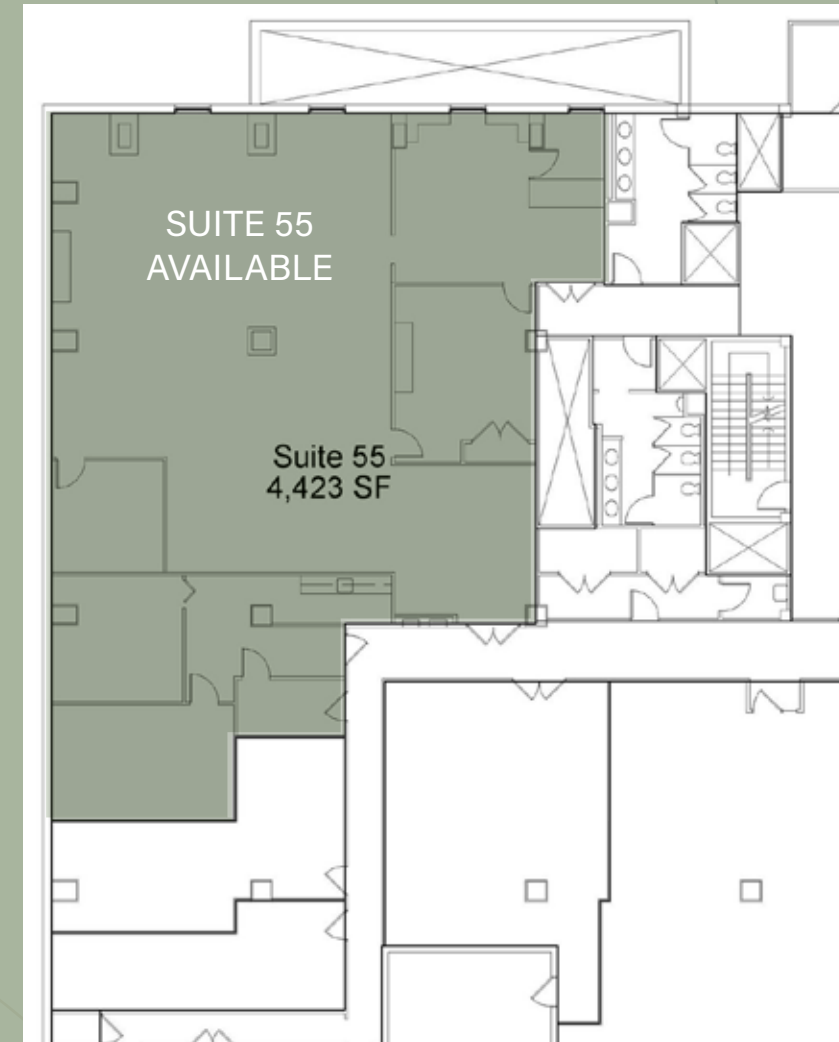
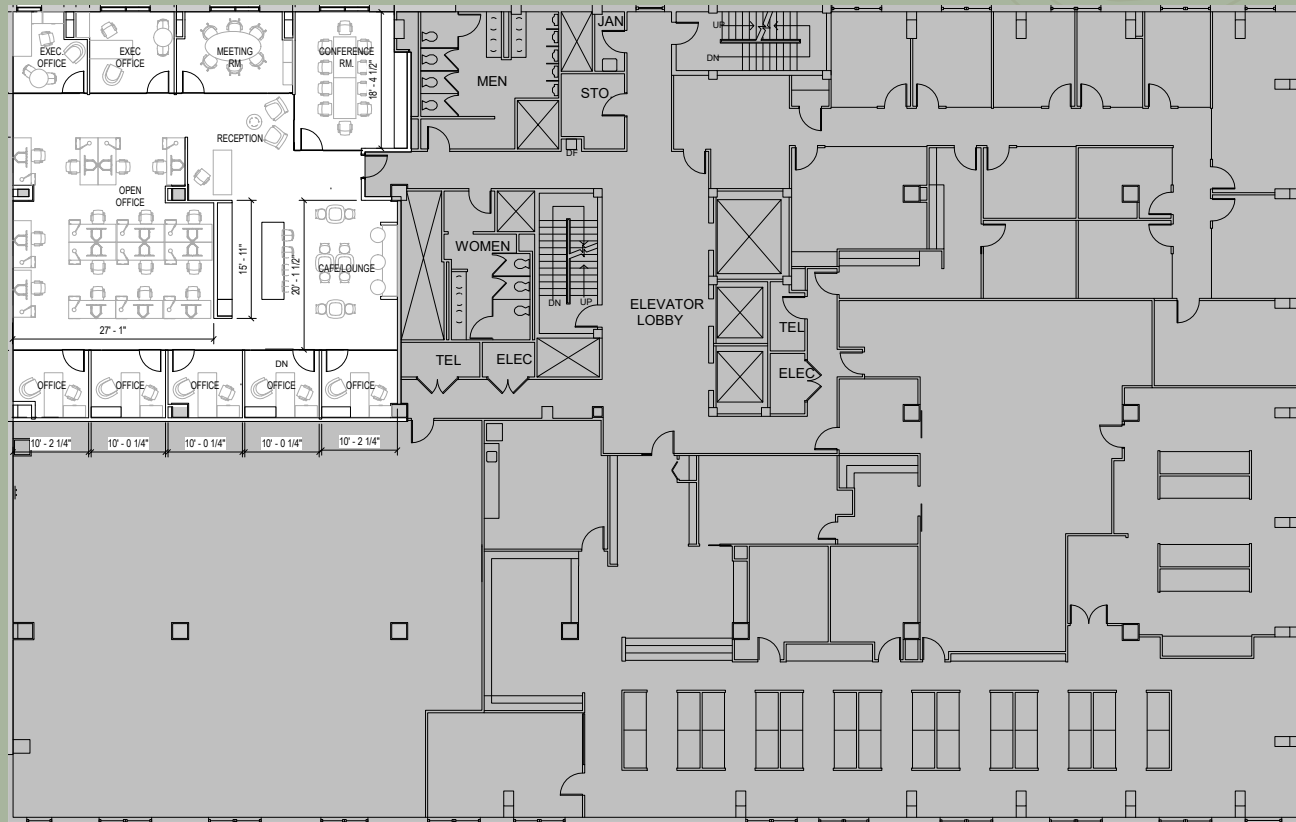


Remarkable
ceiling heights

floor Plans

2ND FLOOR
4,079 SF

LOWER LEVEL
6,111 SF



15 FOOT CEILINGS



Views Into
Naval
Observatory

4

Sides of Glass

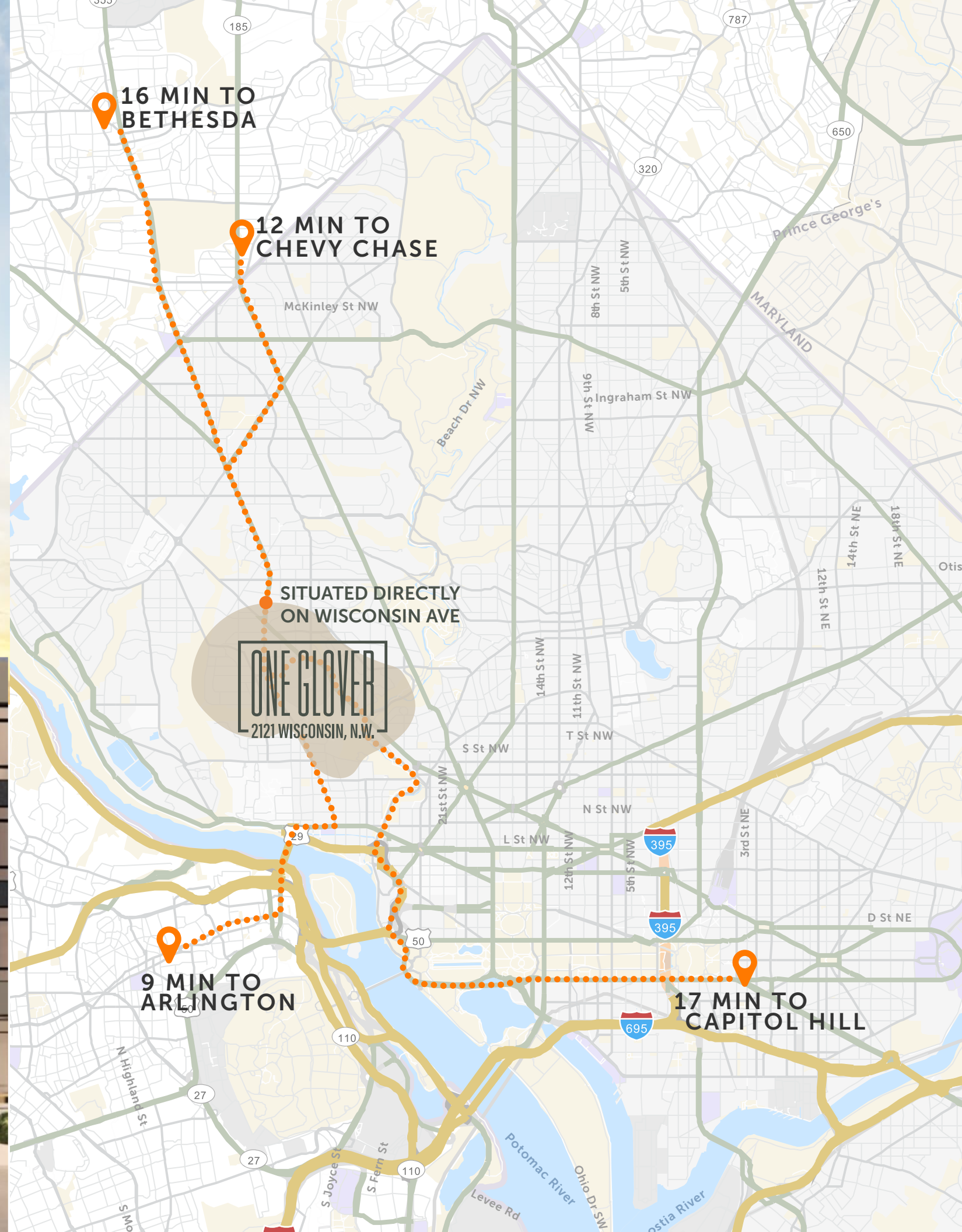


Incredible
River Views



Remarkable
ceiling heights

**A QUICK
COMMUTE FROM**
anywhere



ONE GLOVER

2121 WISCONSIN, N.W.

MARK WOOTERS

+1 202 739 0363
mark.wooters@cushwake.com

JAMES COLLINS

+1 202 266 1188
james.collins@cushwake.com

GINA DAMOND

+1 202 407 8127
gina.damond@cushwake.com

