



Keegan & Coppin
COMPANY, INC.

FOR LEASE

3562 ROUND BARN CIRCLE
SANTA ROSA, CA

CLASS A OFFICE SUITES AVAILABLE



Go beyond broker.

PRESENTED BY:

SHAWN JOHNSON, MANAGING PARTNER/SIOR
LIC # 00835502 (707) 528-1400, EXT 238
SJOHNSON@KEEGANCOPPIN.COM

DAVE PETERSON, SENIOR PARTNER
LIC # 01280039 (707) 528-1400, EXT 210
DPETERSON@KEEGANCOPPIN.COM



PROPERTY DETAILS



3562 ROUND BARN CIRCLE
SANTA ROSA, CA

**CLASS A OFFICE
SUITES FOR LEASE**

PROPERTY INFORMATION

HIGHLIGHTS

- Expansive floor to ceiling glass line
- High-speed technology access
- 10' finished ceiling height
- Restrooms with showers and lockers
- Space planning flexibility
- High quality building standard finishes

SUITE 300: 7,844+/- SF

SUITE 330: 5,249+/- SF

SUITES COMBINED: 13,093+/- SF

DESCRIPTION OF PREMISES

Suites offer the perfect mix of private office and open space with an extensive glass line. The space is accessed directly off of the elevator for great tenant identity.

LEASE TERMS

Rate

Negotiable



PRESENTED BY:

SHAWN JOHNSON, MANAGING PARTNER/SIOR
KEEGAN & COPPIN CO., INC.
LIC # 00835502 (707) 528-1400, EXT 210
DPETERSON@KEEGANCOPPIN.COM

DAVE PETERSON, SENIOR PARTNER
KEEGAN & COPPIN CO., INC.
LIC # 01280039 (707) 528-1400, EXT 210
DPETERSON@KEEGANCOPPIN.COM



AREA DESCRIPTION

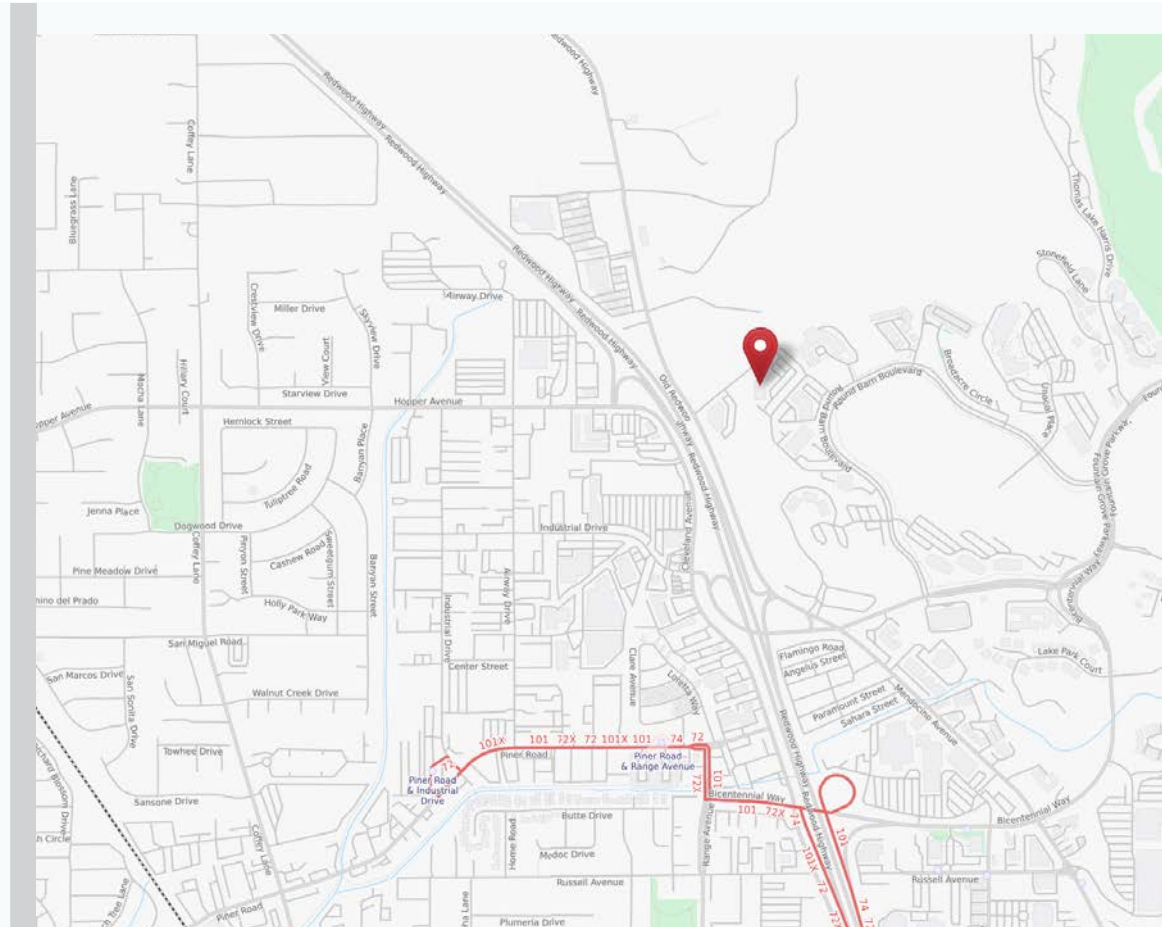


3562 ROUND BARN CIRCLE
SANTA ROSA, CA

**CLASS A OFFICE
SUITES FOR LEASE**

DESCRIPTION OF AREA

Part of the desirable Fountaingrove Executive Center, 3562 Round Barn Circle is just ten minutes from Sonoma County Airport. The center's close proximity to Highway 101 means tenants can enjoy the nearby Coddington Mall, Fountainrove Golf and Athletic Club, Wells Fargo Center for the Arts as well as a wide selection of retail, restaurants and other services.



PRESENTED BY:

**SHAWN JOHNSON, MANAGING PARTNER/SIOR
KEEGAN & COPPIN CO., INC.
LIC # 00835502 (707) 528-1400, EXT 210
DPETERSON@KEEGANCOPPIN.COM**

**DAVE PETERSON, SENIOR PARTNER
KEEGAN & COPPIN CO., INC.
LIC # 01280039 (707) 528-1400, EXT 210
DPETERSON@KEEGANCOPPIN.COM**

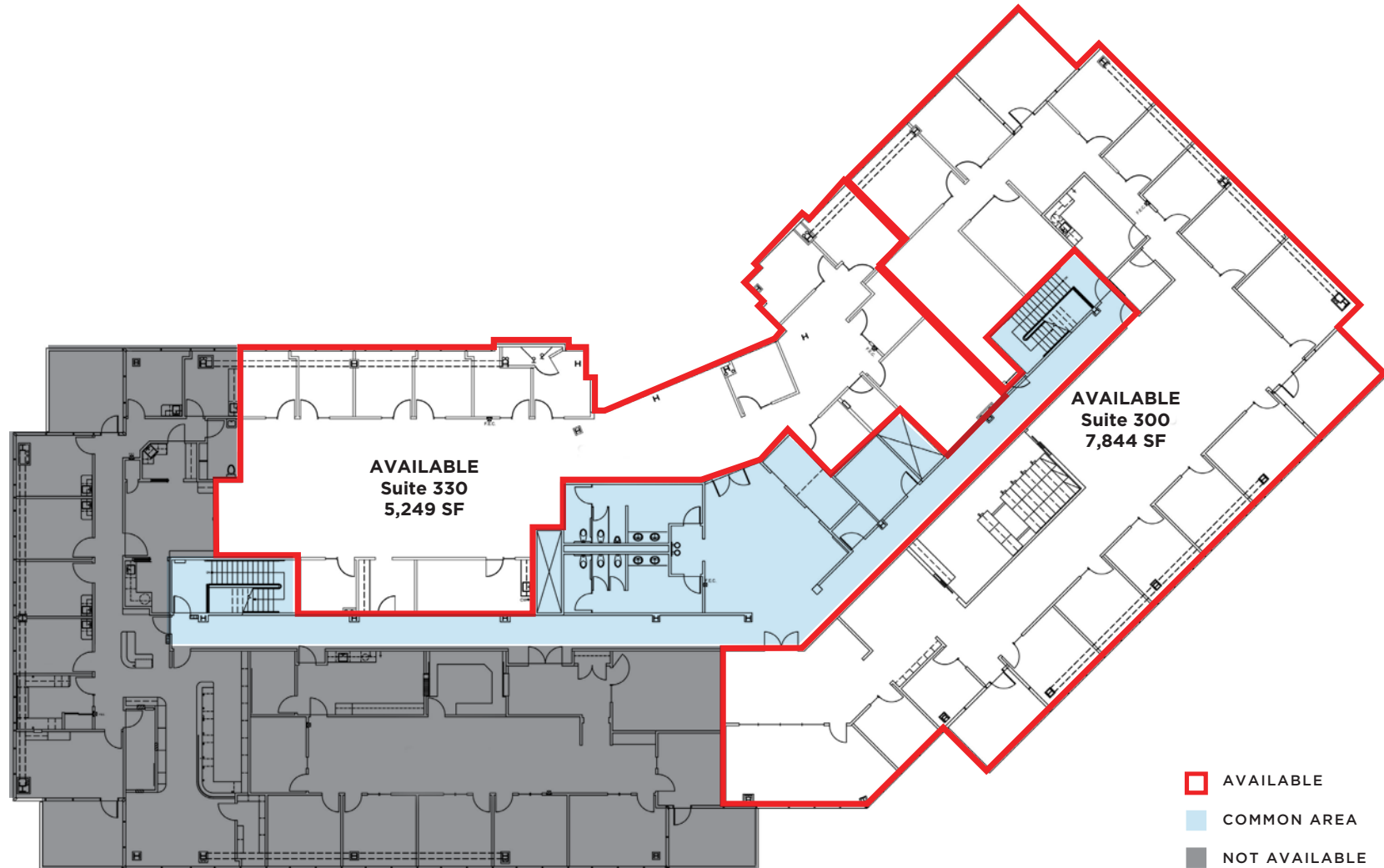


FLOOR PLAN



3562 ROUND BARN CIRCLE
SANTA ROSA, CA

**CLASS A OFFICE
SUITES FOR LEASE**



PRESENTED BY: SHAWN JOHNSON, MANAGING PARTNER/SIOR
KEEGAN & COPPIN CO., INC.
LIC # 00835502 (707) 528-1400, EXT 210
DPETERSON@KEEGANCOPPIN.COM

DAVE PETERSON, SENIOR PARTNER
KEEGAN & COPPIN CO., INC.
LIC # 01280039 (707) 528-1400, EXT 210
DPETERSON@KEEGANCOPPIN.COM



PROPERTY PHOTOS



3562 ROUND BARN CIRCLE
SANTA ROSA, CA

**CLASS A OFFICE
SUITES FOR LEASE**



PRESENTED BY:

SHAWN JOHNSON, MANAGING PARTNER/SIOR
KEEGAN & COPPIN CO., INC.
LIC # 00835502 (707) 528-1400, EXT 210
DPETERSON@KEEGANCOPPIN.COM

DAVE PETERSON, SENIOR PARTNER
KEEGAN & COPPIN CO., INC.
LIC # 01280039 (707) 528-1400, EXT 210
DPETERSON@KEEGANCOPPIN.COM



PROPERTY PHOTOS



3562 ROUND BARN CIRCLE
SANTA ROSA, CA

**CLASS A OFFICE
SUITES FOR LEASE**



PRESENTED BY:

**SHAWN JOHNSON, MANAGING PARTNER/SIOR
KEEGAN & COPPIN CO., INC.
LIC # 00835502 (707) 528-1400, EXT 210
DPETERSON@KEEGANCOPPIN.COM**

**DAVE PETERSON, SENIOR PARTNER
KEEGAN & COPPIN CO., INC.
LIC # 01280039 (707) 528-1400, EXT 210
DPETERSON@KEEGANCOPPIN.COM**

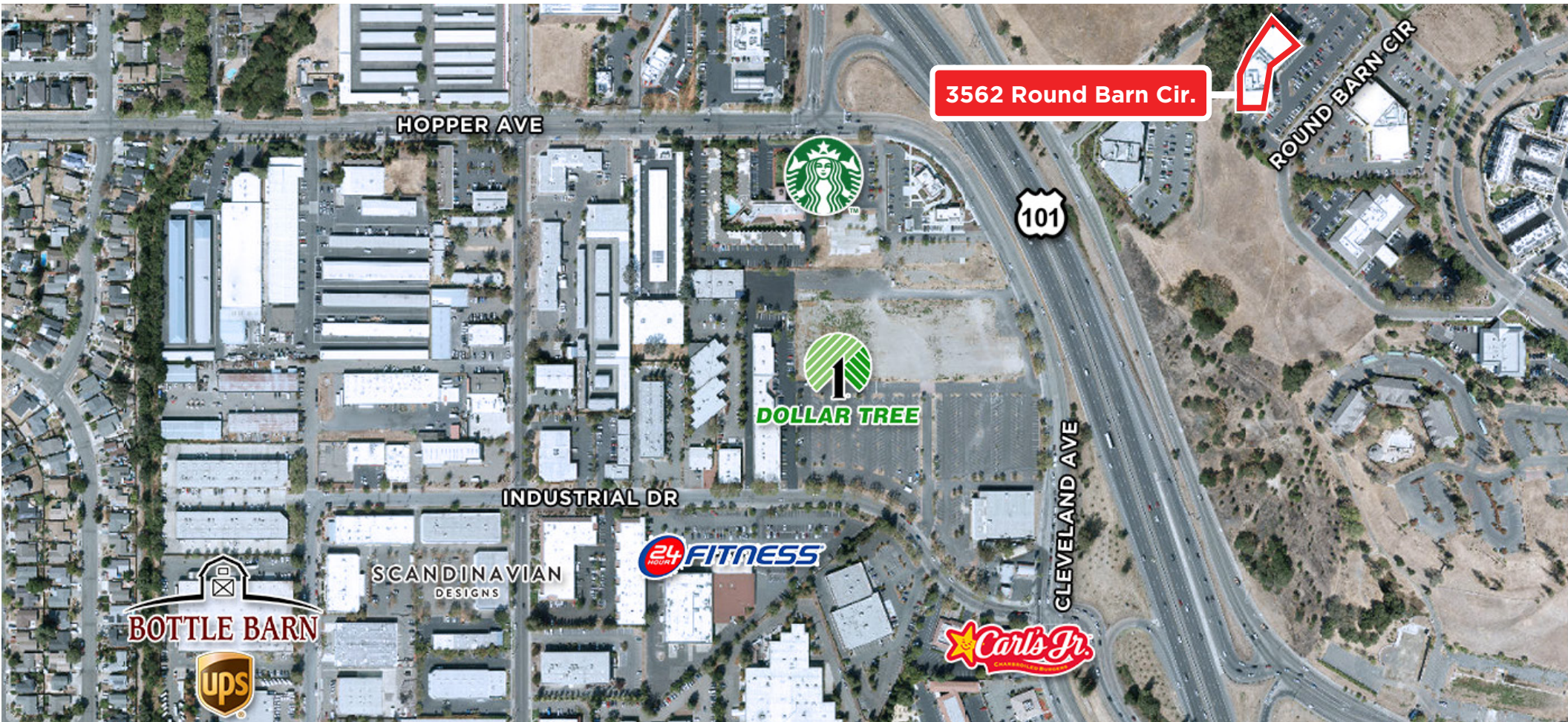


LOCATION MAP



3562 ROUND BARN CIRCLE
SANTA ROSA, CA

**CLASS A OFFICE
SUITES FOR LEASE**



Keegan & Coppin Co., Inc.
1355 North Dutton Avenue
Santa Rosa, CA 95401
www.keegancoppin.com
(707) 528-1400

The above information, while not guaranteed, has been secured from sources we believe to be reliable. Submitted subject to error, change or withdrawal. An interested party should verify the status of the property and the information herein.

REPRESENTED BY:

SHAWN JOHNSON, MANAGING PARTNER/SIOR
LIC # 00835502 (707) 528-1400, EXT 238
SJOHNSON@KEEGANCOPPIN.COM

DAVE PETERSON, SENIOR PARTNER
LIC # 01280039 (707) 528-1400, EXT 210
DPETERSON@KEEGANCOPPIN.COM