

**FREEZER & COOL DOCK SPACE**

*For Lease*

**Powerline Park**

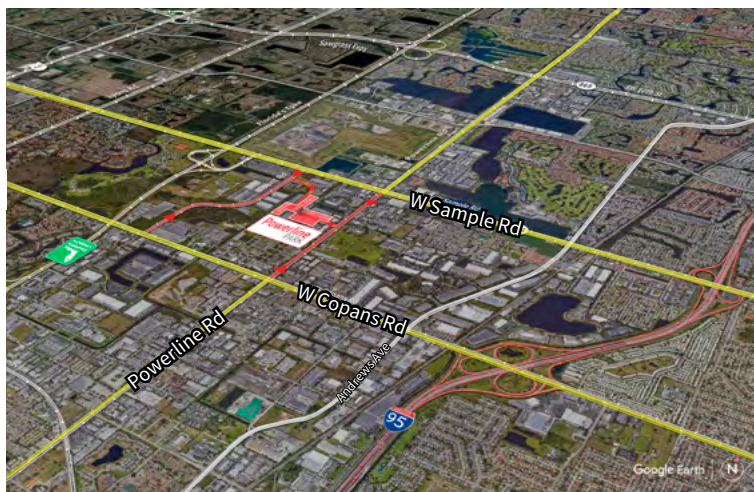
2207 NW 30th Place  
Pompano Beach, FL 33069



**Industrial Space For Lease**  
**9,251 SF**

## Powerline Park

2207 NW 30th Place, Pompano Beach, Florida 33069



### Location

- Easy access off Sample Road and Powerline Road
- Excellent access to I-95 and the Florida Turnpike
- Equidistant to Fort Lauderdale/Hollywood International Airport and Palm Beach International Airport

### Space Features

- 9,251 SF total
- 1,523 SF of office
- 7,728 SF of warehouse
- 4,176 SF of freezer space
- 1,923 SF of cool dock
- 1,745 SF of mezzanine (Bonus)
- 20' clear height
- One (1) grade level door
- One (1) dock high door (well)
- Parking ratio: 2.0/1,000 sf



**Peter Johnston**  
M +1 954 980 3224  
peter.johnston@jll.com

**Yuri Quispe**  
M +1 772 201 5305  
yuri.quispe@jll.com

**Peter Sheridan**  
M +1 954 439 4941  
peter.sheridan@jll.com



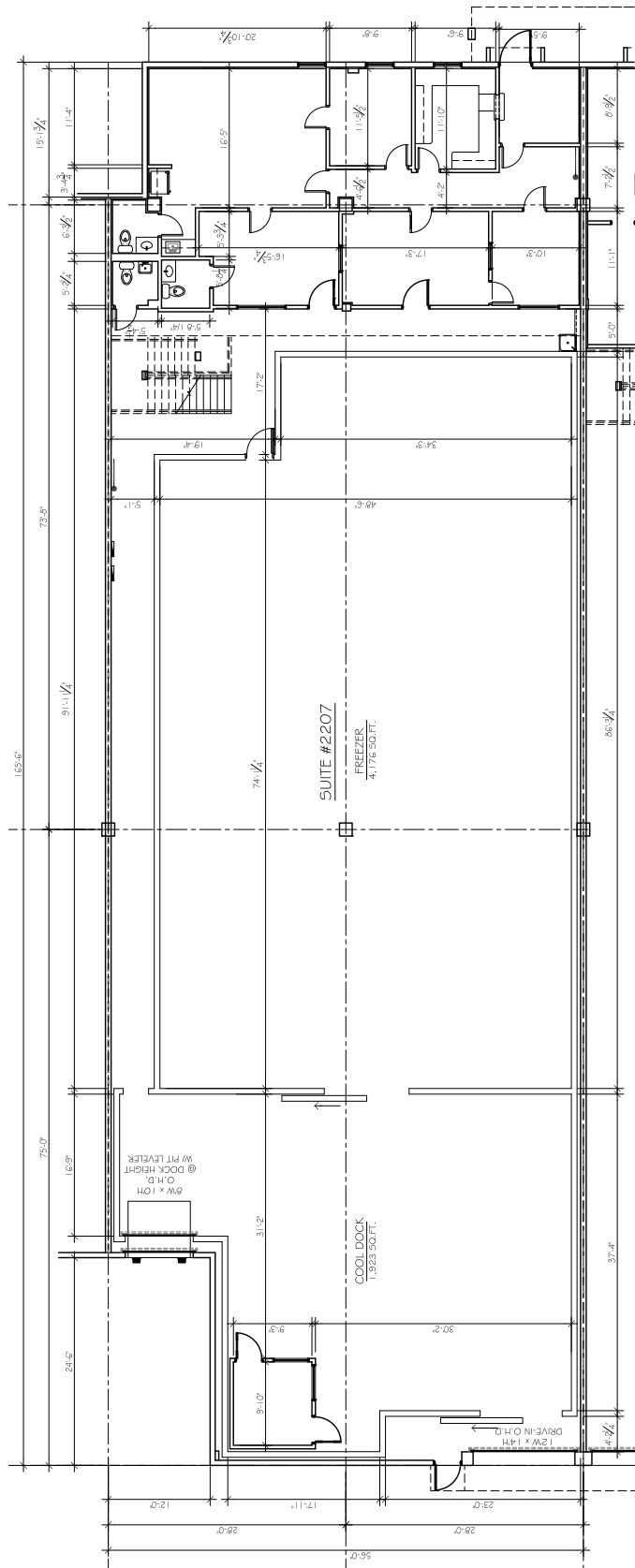
# For Lease

## Powerline Park

2207 NW 30th Place, Pompano Beach, FL 33069

### Powerline Park Ground Floor Plan

Office:	1,523 SF
Warehouse:	7,728 SF
Freezer:	4,176 SF
Cool Dock:	1,923 SF
<b>Total:</b>	<b>9,251 SF</b>



© 2025 Jones Lang LaSalle IP, Inc.



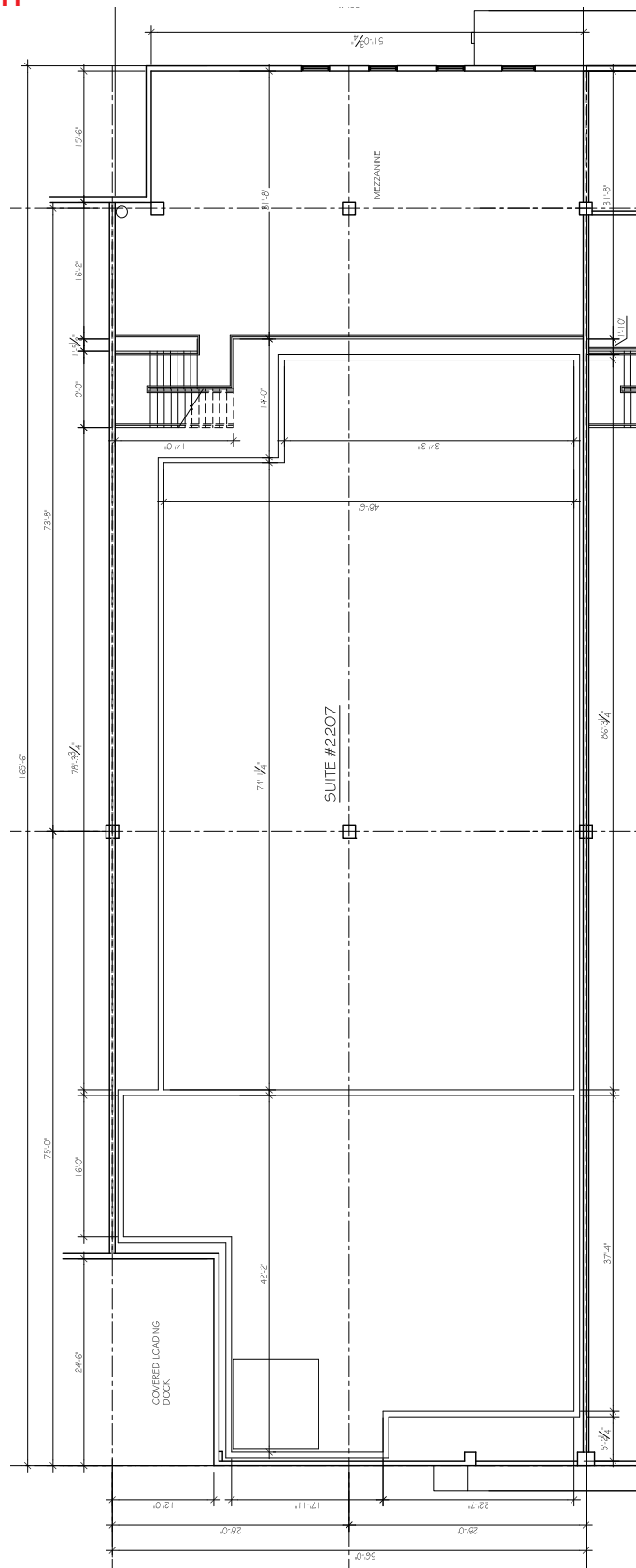
# For Lease

## Powerline Park

2207 NW 30th Place, Pompano Beach, FL 33069

### Powerline Park Mezzanine Floor Plan

Bonus Mezzanine: 1,728 SF



© 2025 Jones Lang LaSalle IP, Inc.

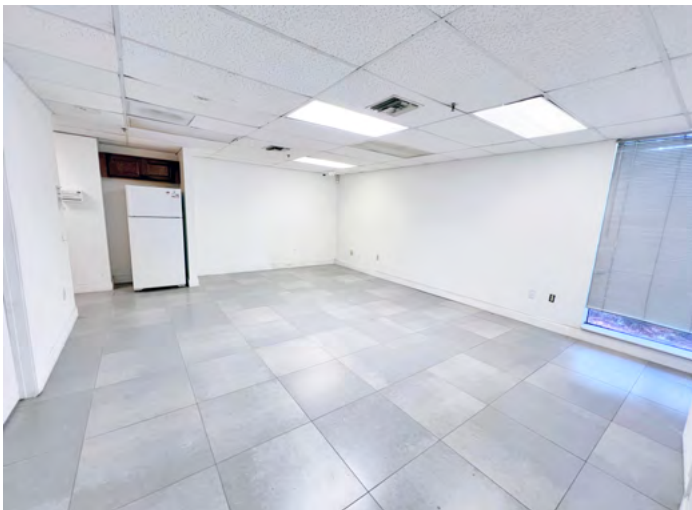


# For Lease

## Powerline Park

2207 NW 30th Place, Pompano Beach, FL 33069

### Powerline Park Freezer & Cool Dock in Warehouse



# For Lease

**Powerline Park**  
2207 NW 30th Place, Pompano Beach, FL 33069

## Powerline Park Site Plan

■ - Available Space



Building	Suite	Total SF	Office SF	Warehouse SF	Mezzanine SF (Bonus)	Loading	Clear Height	Available Date
1	2207	9,251	1,523	7,728	1,728	1 DH / 1 G	20'	Now

