

Prologis Sun Valley Distribution Center

9500 EL DORADO AVENUE | SUN VALLEY, CA 91352



INDUSTRIAL SPACE FOR LEASE

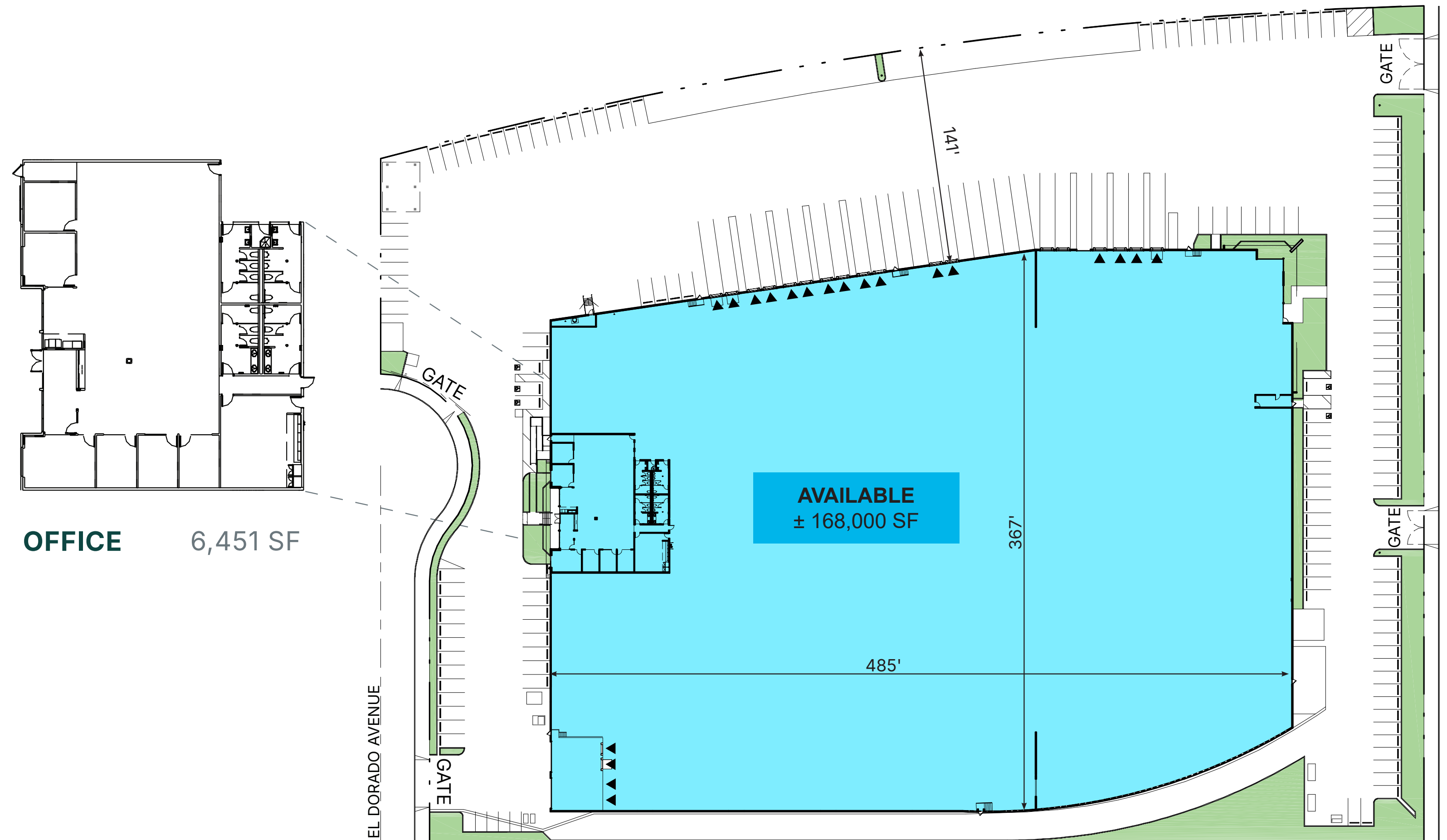
168,000 SF



Property Features

Industry-leading features to empower your business.

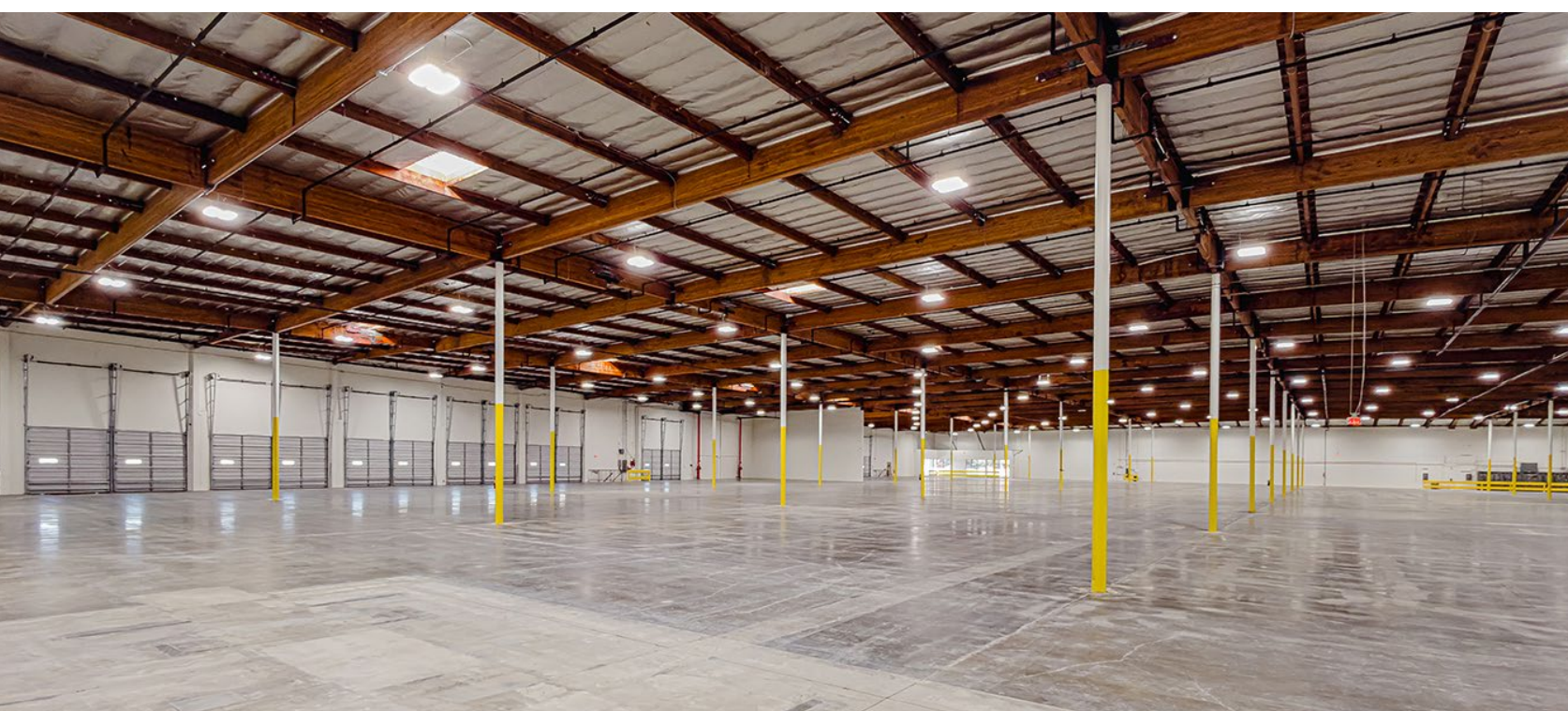
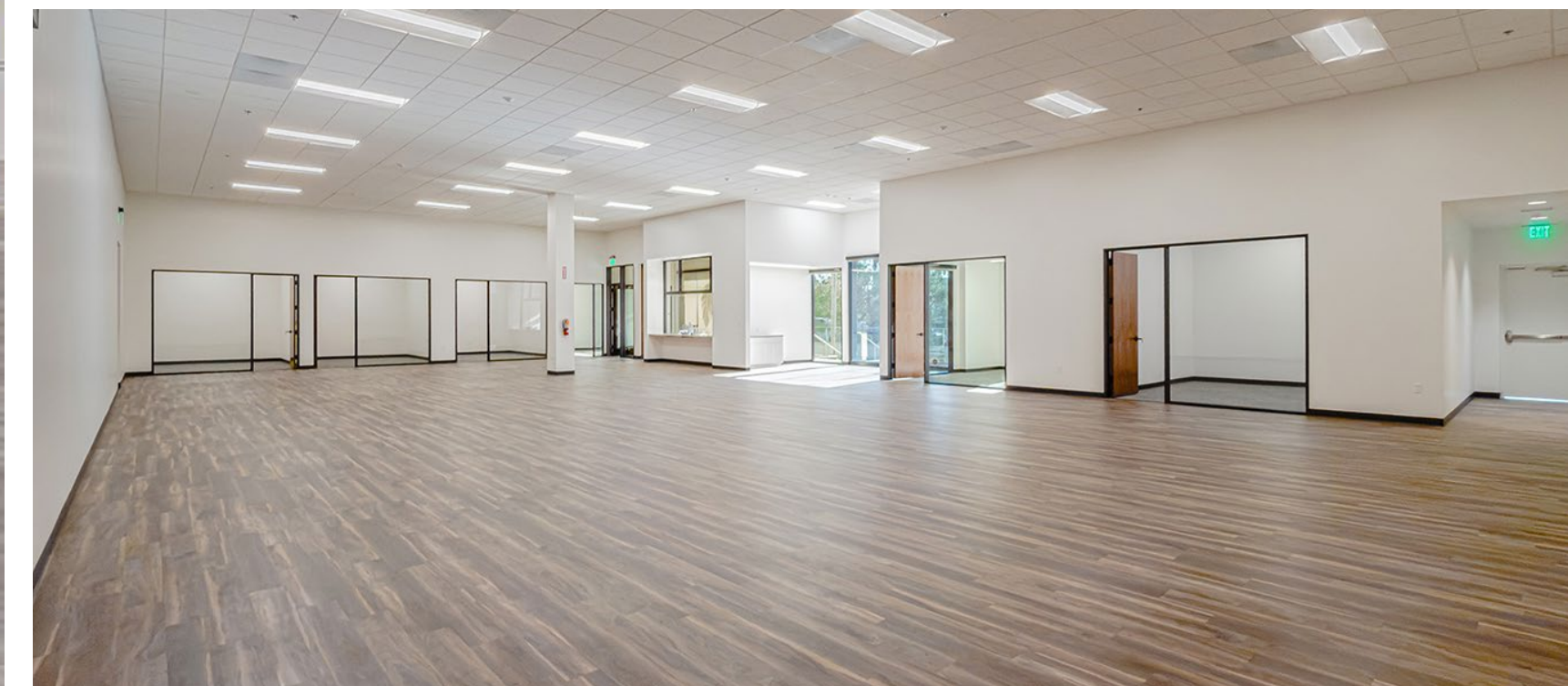
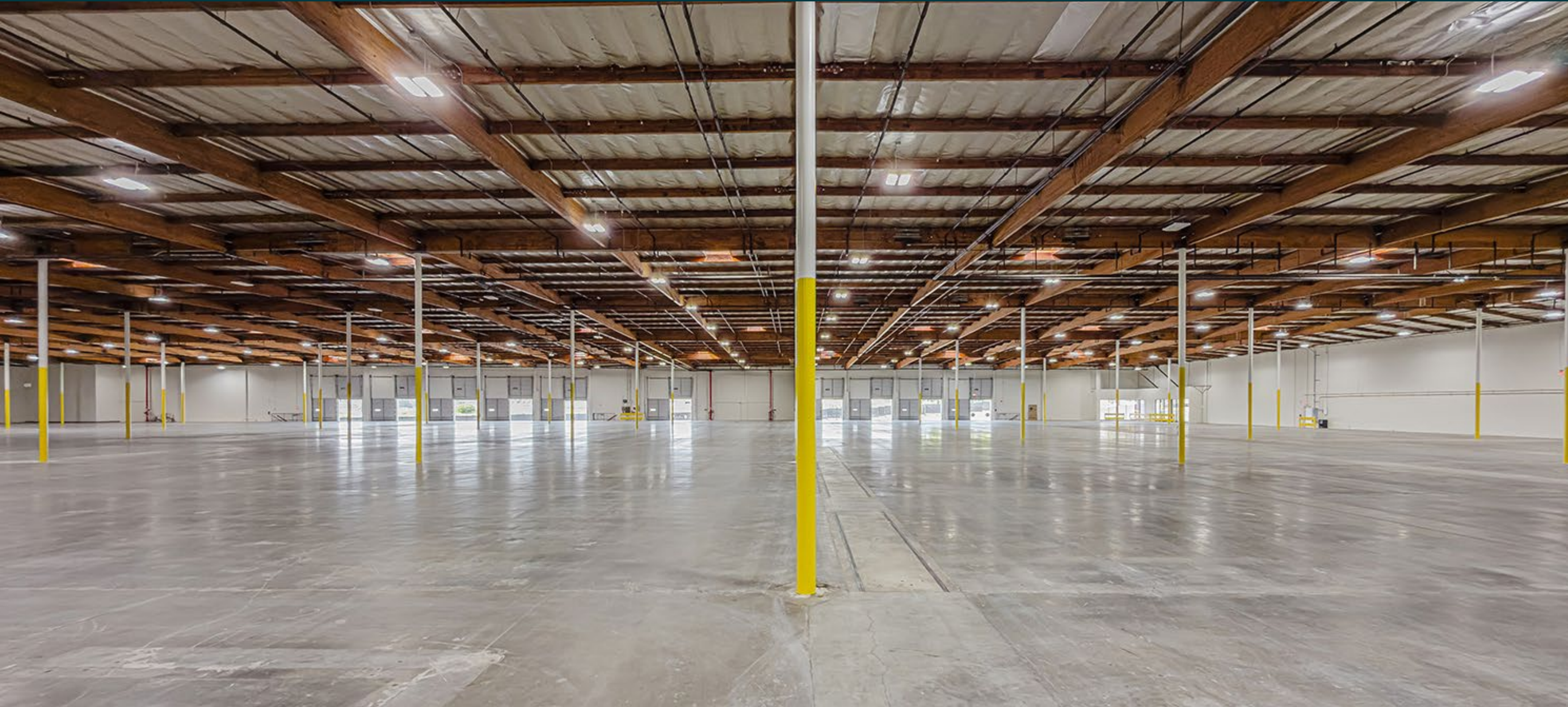
Available Space	168,000 SF
Office SF	6,451
Clear Height	24'
Dock Doors	22
Car Parking Spaces	200 (1.18:1 Ratio; Additional Possible)
Electrical Service	7200 amps, 480 volt
Sprinkler	.46 GPM, 2,000 SF Calculated Sprinkler System
Lighting	New LED Lighting System



Exterior Photos



Interior Photos



Prologis Essentials

Keeping You Ahead of What's Next.

Build resilience, drive innovation and unlock growth with Prologis Essentials—your all-in-one platform for optimized operations, energy, mobility and workforce solutions.

Transform today's logistics challenges into opportunities.



Operations

From project inception to delivery and beyond, our consultative approach and integrated solutions optimize your operations, accelerating throughput, efficiency and utilization.

- Warehouse design & optimization
- Move in / move out
- Materials handling equipment & storage
- Integrated project management

Energy + Sustainability

Energy + sustainability tools and resources build your decarbonized business.

- Clean energy solutions
- Energy storage
- Backup power generators

Mobility

Mobility solutions to turbocharge your drive to zero emissions.

- Fleet electrification for depots and hubs
- On-demand power
- Hydrogen fueling
- Workplace charging

Workforce

Unlock the potential of your workforce and enhance recruitment, retention and productivity.

- Instawork achieves 90%+ fill rates due to their large workforce network
- Community Workforce Initiative (CWI)
- Talent staffing and retention programs
- Training and certification

Partner with Prologis

Clear,
Simple,
Service.



You can count on us as your trusted partner.

Pairing up with Prologis gives you access to a full-service team of experts before and during your tenancy. Work with an in-house team of development managers with local experience to entitle, plan, and execute your facility. Then, let a professional group of property managers handle the day-to-day of your real estate.

Our team at Prologis Sun Valley Distribution Center is comprised of a Market Officer, Leasing Team, RECX Managers and Coordinators (property management), Construction Managers, a Development Manager, and Maintenance Techs.

Providing responsive local support 24/7, we work hard every day to help you stay ahead of what's next.

At Prologis, we deliver on our promises so you can deliver on yours.

Prologis Sun Valley Distribution Center

Colliers



David Harding

CalDRE Lic. 01049696
david.harding@colliers.com
+1 818 334 1880
505 N Brand Blvd
Suite 1120
Glendale, CA 91203

Greg Geraci

CalDRE Lic. 01004871
greg.geraci@colliers.com
+1 818 334 1844
505 N Brand Blvd
Suite 1120
Glendale, CA 91203

Matt Dierckman

CalDRE Lic. 01301723
matt.dierckman@colliers.com
+1 818 334 1870
505 N Brand Blvd
Suite 1120
Glendale, CA 91203

Billy Walk

CalDRE Lic. 01398310
william.walk@colliers.com
+1 818 334 1898
505 N Brand Blvd
Suite 1120
Glendale, CA 91203

Kevin Carroll

CalDRE Lic. 02078759
kevin.carroll@colliers.com
+1 818 334 1892
505 N Brand Blvd
Suite 1120
Glendale, CA 91203

Erin Mergenthaler

CalDRE Lic. 01930776
emergenthaler@prologis.com
+1 310 338 3264
2141 Rosecrans Ave
Suite 1151
El Segundo, CA 90245

9500 El Dorado Ave
Sun Valley, CA 91352

The world runs on logistics. At Prologis, we don't just lead the industry, we define it. We create the intelligent infrastructure that powers global commerce, seamlessly connecting the digital and physical worlds. From agile supply chains to clean energy solutions, our eco systems help your business move faster, operate smarter and grow sustainably. With unmatched scale, innovation and expertise, Prologis is a category of one—not just shaping the future of logistics but building what comes next.

All rights reserved. No warranty or representation, expressed or implied, is made as to the accuracy of the information contained herein, and same is submitted subject to error and omissions.

