

FLEX BUILDING

FOR SALE or FOR LEASE

3290 Airline Boulevard
Portsmouth, VA 23701



ABOUT PROPERTY

7,108 SF Main Building

- 5,908 SF Office
- 1,200 SF Shop
- New Roof
- Recently Paved Parking Lot (46 parking spaces)
- New Parking Lot Lights
- Stand-By Generator
- New HVAC
- New Water Heater
- Four 10' (w) x 9' (h) overhead doors
- 200 amp, 3-phase electrical service
- Floor Drain and Oil/Water Separator in Shop

2,500 SF Warehouse Building

- 50' x 50'
- 16' x 16' motorized overhead door
- 12' x 12' overhead door
- 16' – 18' clear ceiling height
- 6" reinforced slab

- Total 1.93 acres
- Monument Sign
- Zoned GMU (General Mixed Use)
- 9,895 VPD
- Asking Rental Rate: \$12.00 psf, NNN
- **REDUCED PRICE: \$1,400,000 \$1,250,000**



For more information:
BOBBY BEASLEY, III, SIOR
757.640.8241
BobbyBeasley3@HarveyLindsay.com

999 Waterside Drive • Suite 1400
Norfolk, Virginia 23510
757-640-8700
www.HarveyLindsay.com

HARVEY LINDSAY
COMMERCIAL REAL ESTATE

PHOTOS | 3290 Airline Blvd, Portsmouth, VA

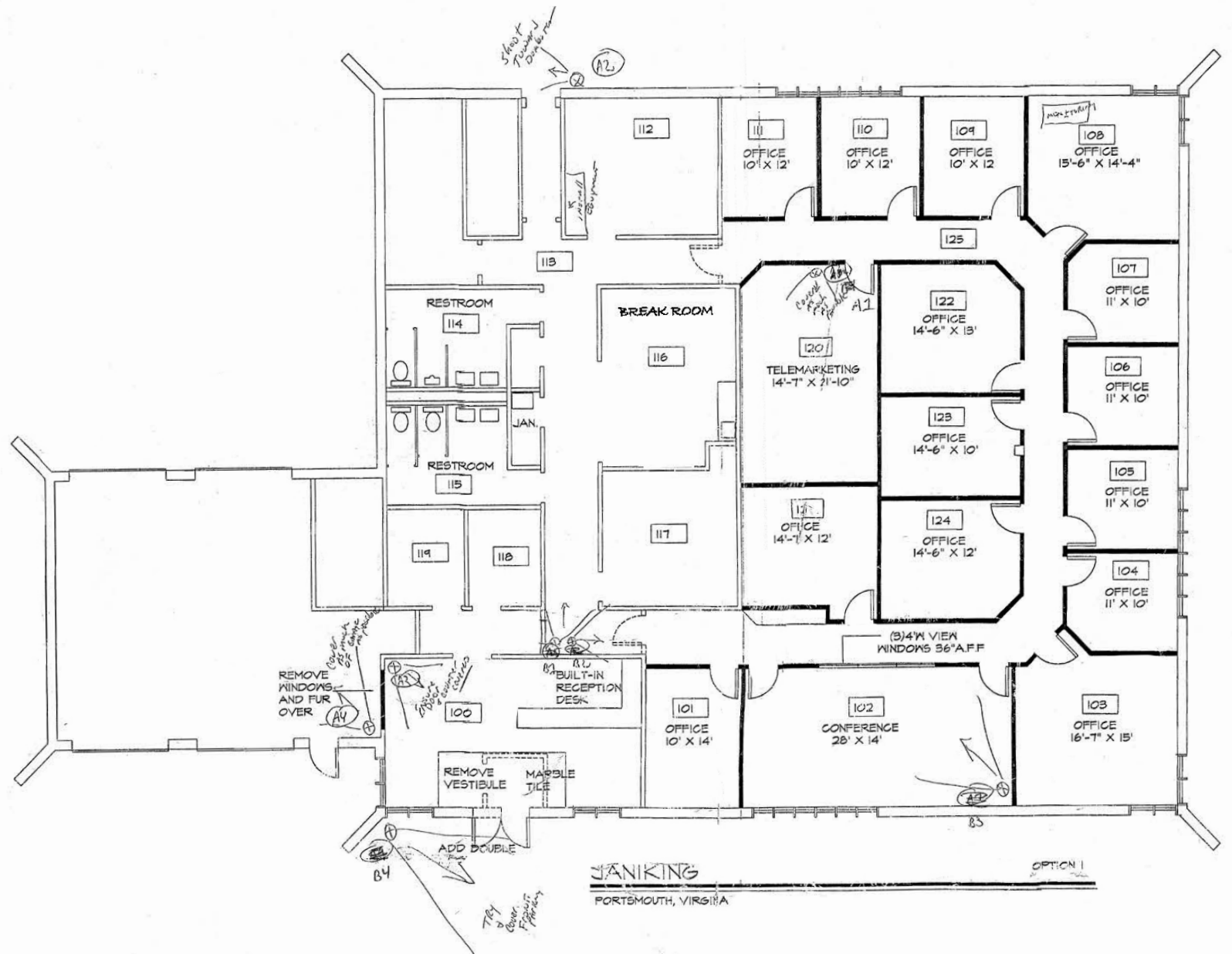


For more information:
BOBBY BEASLEY, III, SIOR
757.640.8241
BobbyBeasley3@HarveyLindsay.com

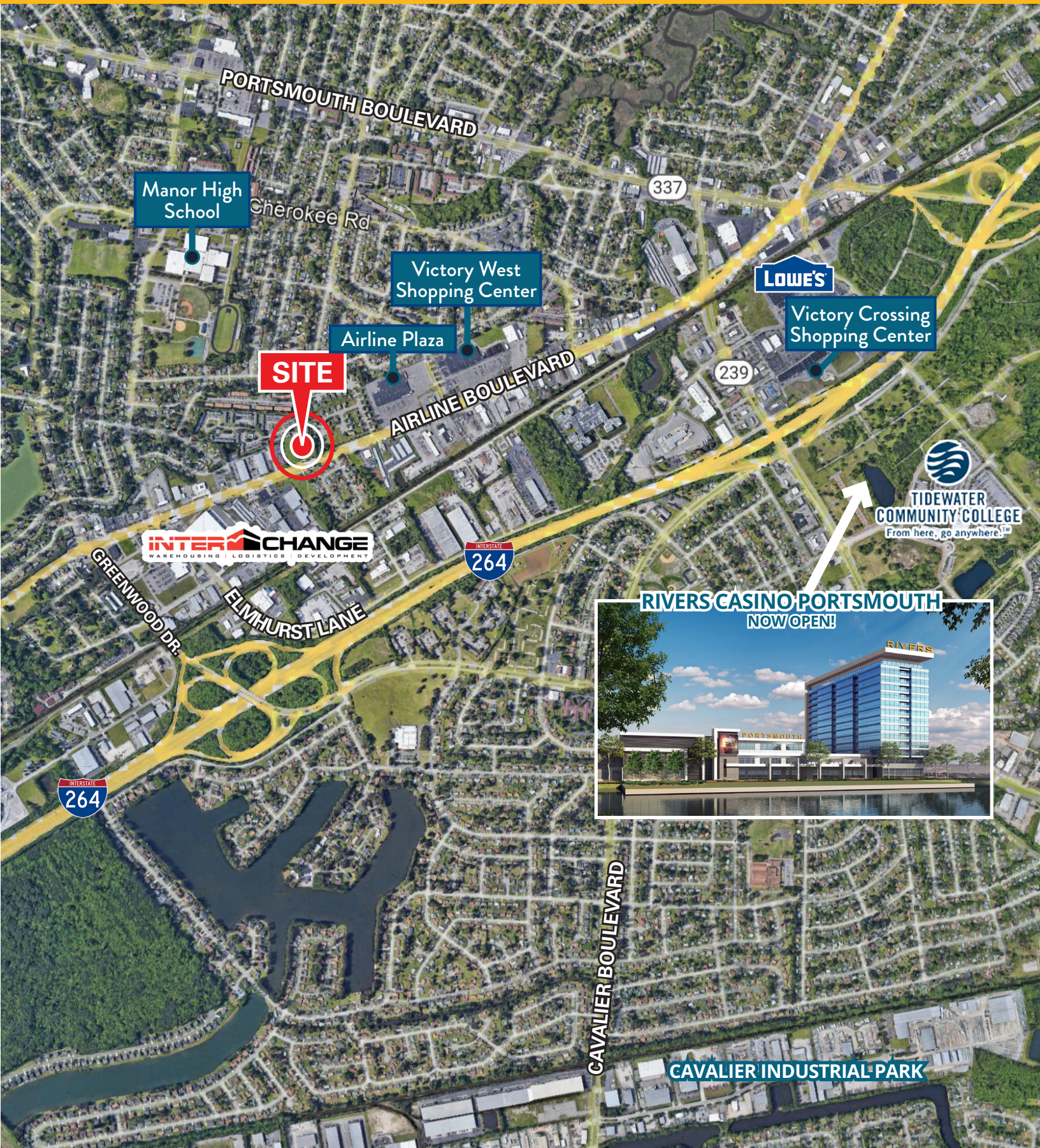
999 Waterside Drive • Suite 1400
Norfolk, Virginia 23510
757-640-8700
www.HarveyLindsay.com

HARVEY LINDSAY
COMMERCIAL REAL ESTATE

MAIN BUILDING



LOCATION AERIAL | 3290 Airline Blvd, Portsmouth, VA



INTERCHANGE
WAREHOUSING | LOGISTICS | DEVELOPMENT

INTERSTATE
264

INTERSTATE
264

337

239



**TIDEWATER
COMMUNITY COLLEGE**
From here, go anywhere.™

RIVERS CASINO PORTSMOUTH
NOW OPEN!



CAVALIER BOULEVARD

CAVALIER INDUSTRIAL PARK

For more information:
BOBBY BEASLEY, III, SIOR
757.640.8241
BobbyBeasley3@HarveyLindsay.com

999 Waterside Drive • Suite 1400
Norfolk, Virginia 23510
757-640-8700
www.HarveyLindsay.com

HARVEY LINDSAY
COMMERCIAL REAL ESTATE

DEMOGRAPHICS | 3290 Airline Blvd, Portsmouth, VA

1 MILE

DEMOGRAPHIC SUMMARY

3290 Airline Blvd, Portsmouth, Virginia, 23701
Ring of 1 mile

KEY FACTS

10,789

Population



4,221

Households

39.1

Median Age

\$42,606

Median Disposable Income

EDUCATION

12.8%

No High School Diploma



36.6%
High School Graduate



33.5%
Some College/
Associate's Degree



17.1%
Bachelor's/Grad/Prof Degree

INCOME



\$52,772

Median Household Income



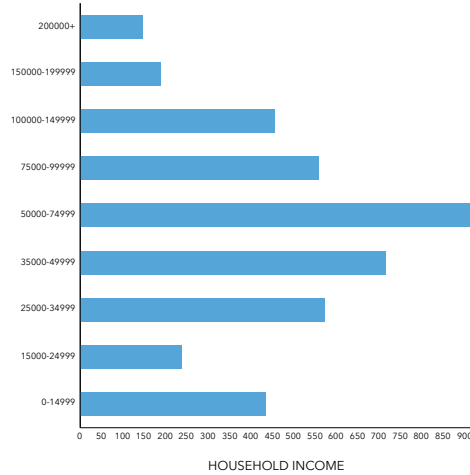
\$28,654

Per Capita Income

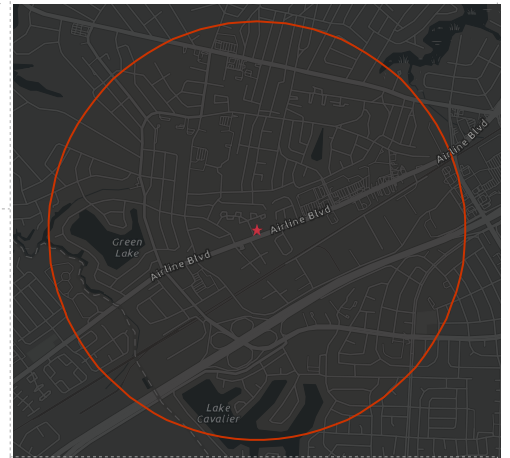


\$95,588

Median Net Worth



HOUSEHOLD INCOME



EMPLOYMENT



51.7%

White Collar



34.0%

Blue Collar



20.2%

Services

5.1%

Unemployment Rate

5 MILES

DEMOGRAPHIC SUMMARY

3290 Airline Blvd, Portsmouth, Virginia, 23701
Ring of 5 miles

KEY FACTS

157,798

Population



62,033

Households

37.9

Median Age

\$52,862

Median Disposable Income

EDUCATION

8.0%

No High School Diploma



30.8%
High School Graduate



33.2%
Some College/
Associate's Degree



28.0%
Bachelor's/Grad/Prof Degree

INCOME



\$65,025

Median Household Income



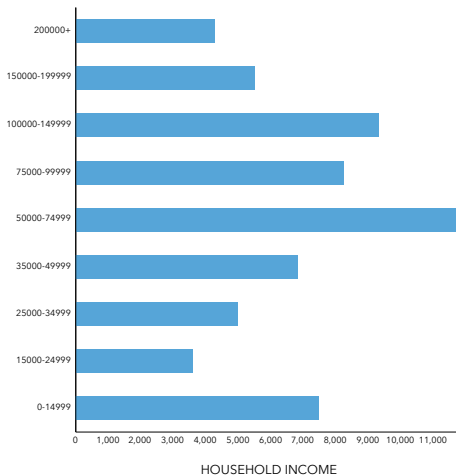
\$35,566

Per Capita Income

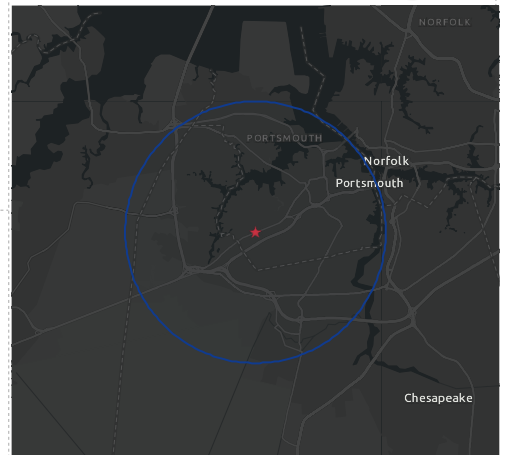


\$157,406

Median Net Worth



HOUSEHOLD INCOME



EMPLOYMENT



63.8%

White Collar



23.4%

Blue Collar



17.3%

Services

4.1%

Unemployment Rate