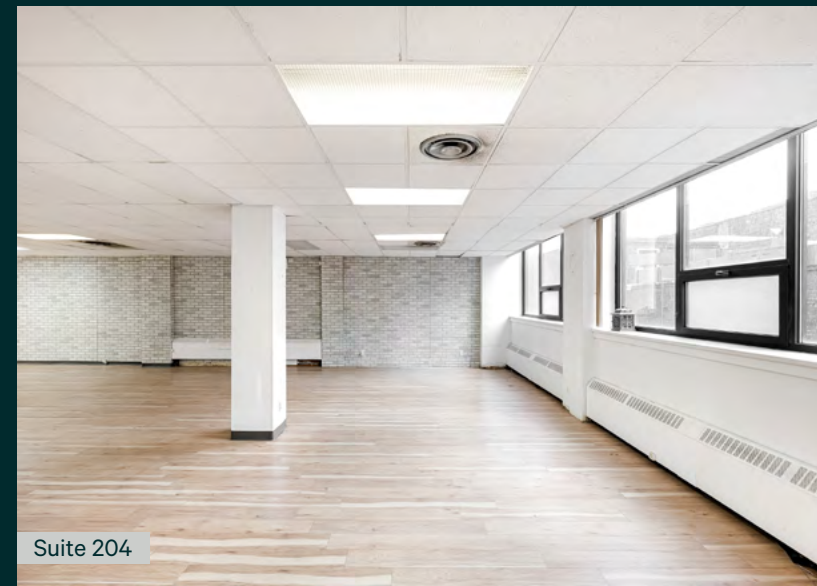


Office Spaces | For Lease

CBRE

1118 Sainte-Catherine Street West, Montreal (Quebec)





Lease Terms

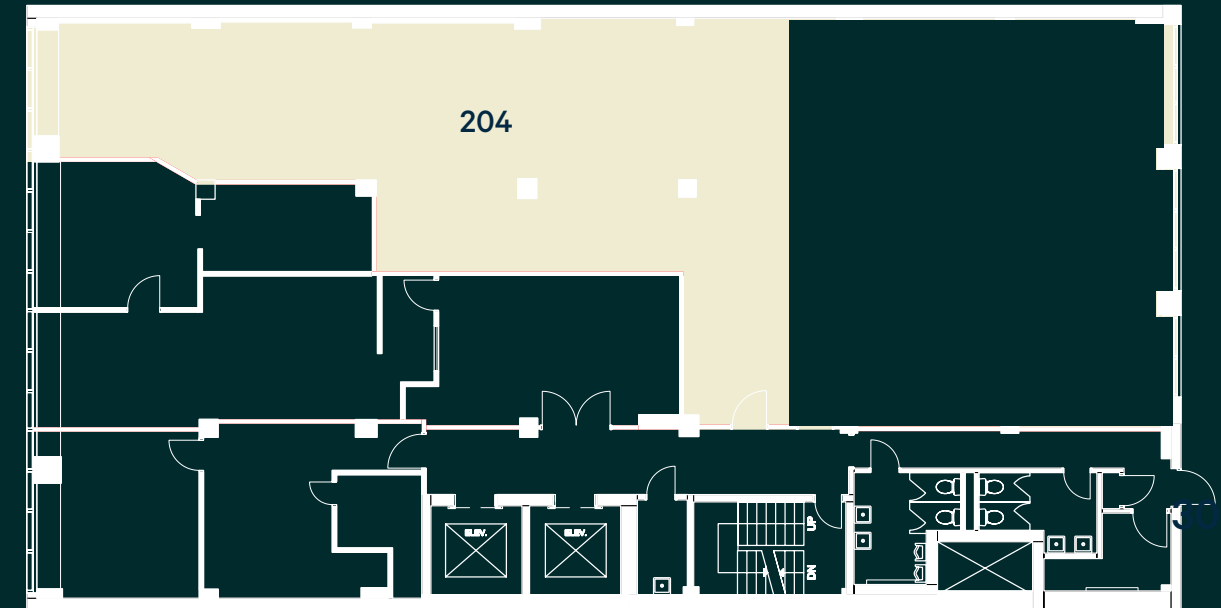
Term	5 years
Net Rent	\$17.64 per sq. ft.
Additional Rent	\$12.36 per sq. ft. Base Year 2024
Hydro	Metered
In-Suite Cleaning	Not included
Availability	Immediate



Floor Plans

Suite 204	1,726 sq. ft.
Suite 502	1,407 sq. ft.
Suite 503	1,053 sq. ft.
Suite 603	987 sq. ft.

Second Floor



Fifth Floor



Sixth Floor





Property Details



Located on Sainte-Catherine Street West between Stanley and Peel streets



Numerous amenities located in close proximity



The space benefits from natural light

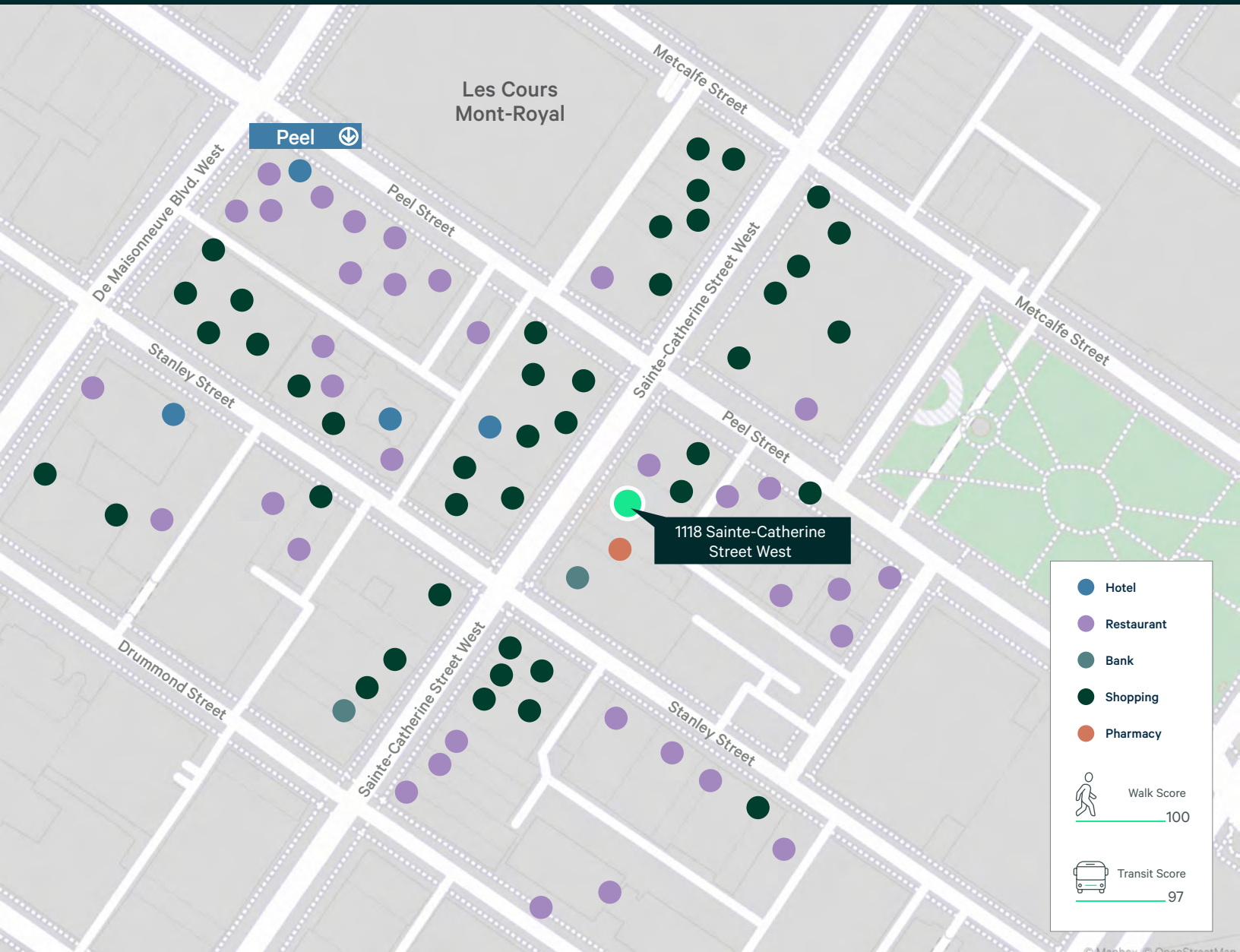


Move in ready suites available



2-min walk to the Peel metro station





Contact Us

Christopher Rundle
 Vice President
 Real Estate Broker
 +1 514 375 0818
 christopher.rundle@cbre.com

Bryan Greenberg
 Associate Vice President
 Commercial Real Estate Broker
 +1 514 375 2507
 bryan.greenberg@cbre.com

Amanda Angela Herbu
 Associate
 Commercial Real Estate Broker
 +1 514 375 0456
 amanda.herbu@cbre.com

CBRE Limited, Real Estate Agency | 1250 René-Lévesque Blvd. West, Suite 2800 | Montréal, Québec H3B 4W8 | +1 514 849 6000 | www.cbre.ca

This disclaimer shall apply to CBRE Limited, and to all divisions of the Corporation ("CBRE"). The information set out herein (the "Information") has not been verified by CBRE, and CBRE does not represent, warrant or guarantee the accuracy, correctness and completeness of the Information. CBRE does not accept or assume any responsibility or liability, direct or consequential, for the Information or the recipient's reliance upon the Information. The recipient of the Information should take such steps as the recipient may deem necessary to verify the Information prior to placing any reliance upon the Information. The Information may change and any property described in the Information may be withdrawn from the market at any time without notice or obligation to the recipient from CBRE. Mapping Sources: Canadian Mapping Services canadamapping@cbre.com; DMTI Spatial, Envirionics Analytics, Microsoft Bing, Google Earth