

6600 LONE TREE WAY | FOR LEASE

±10,000 SF (DIVISIBLE) MEDICAL OFFICE SPACE FOR PRACTICES/SERVICES

MEDICAL SPACE WITH RETAIL-LEVEL VISIBILITY

IN SHELL CONDITION



Edward F. Del Beccaro

Executive Vice President

SF Bay Area Manager

925.296.3333

ed.delbeccaro@tricommercial.com

LIC: #00642167

Sonny O'Drobinak

Managing Director

Healthcare Services

925.296.3303

sonny.odrobinak@tricommercial.com

LIC: #00632311

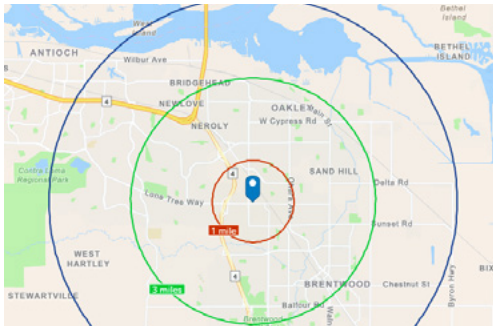


6600 LONE TREE WAY

RARE LARGE MEDICAL SPACE,
BRENTWOOD, CA

PAGE 2

- Leasing incentives and Tenant Improvement Funds possible. Contact brokers for more
- Rare, shopping center oriented building in Brentwood for medical space.
- Ample parking
- Neighbors include Target, Best Buy, WinCo Foods, JC Penney, Hobby Lobby, BevMo, Office Depot, Barnes & Noble, Harbor Freight, and co-tenant BASS Medical Group
- Divisible to $\pm 4,536$ SF & $\pm 5,464$ SF



	Population	Population	Median Age	Households	Median Disposable Income
1-Mile	12,505	35.5	3,362	\$117,296	
3-Mile	117,487	34.7	35,265	\$101,377	
5-Mile	188,348	35.6	57,778	\$98,649	



Edward F. Del Beccaro
925.296.3333
ed.delbeccaro@tricommercial.com
LIC: #00642167

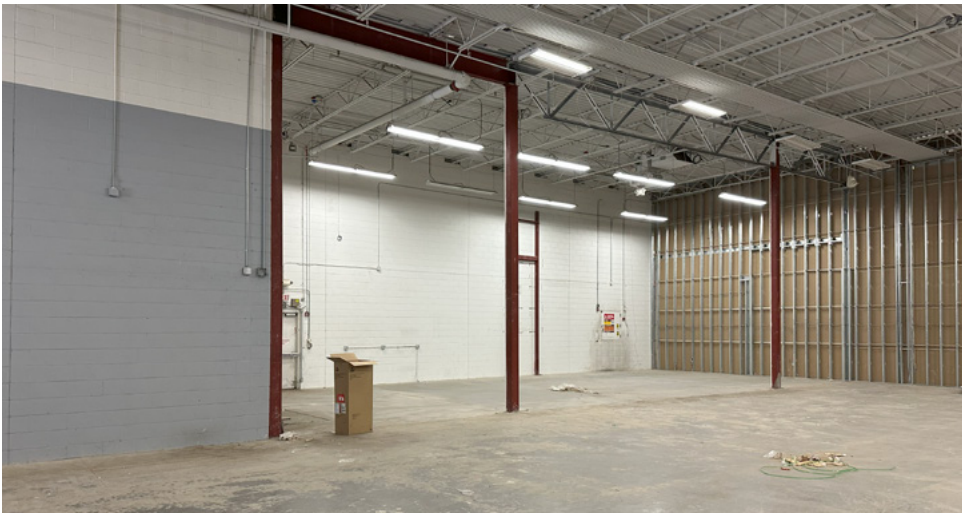
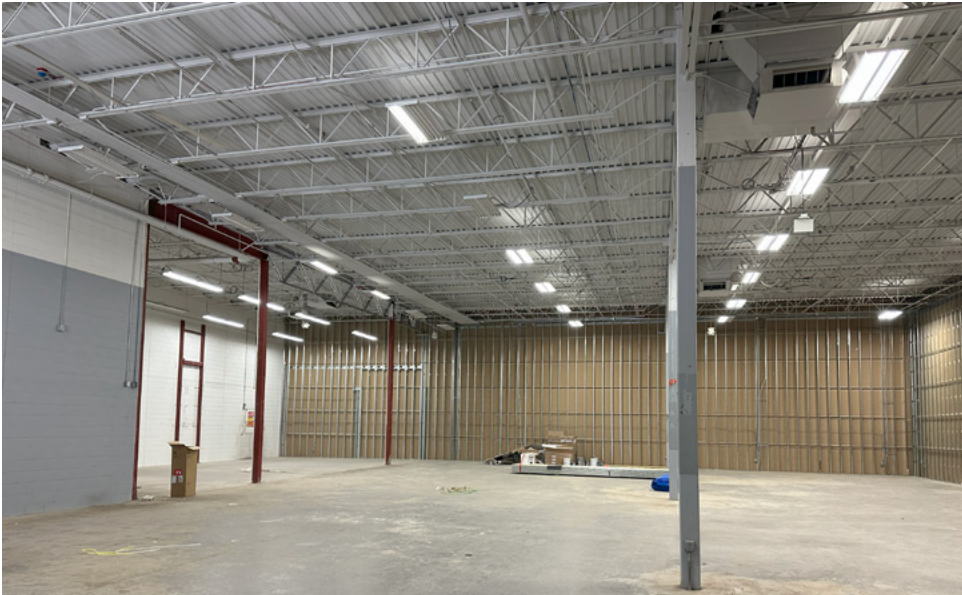
Sonny O'Drobinak
925.296.3303
sonny.odrobinak@tricommercial.com
LIC: #00632311

TRICORFAC
INTERNATIONAL
COMMERCIAL
www.tricommercial.com

6600 LONE TREE WAY

RARE LARGE MEDICAL SPACE,
BRENTWOOD, CA

PAGE 3



Edward F. Del Beccaro

925.296.3333

ed.delbeccaro@tricommercial.com

LIC: #00642167

Sonny O'Drobinak

925.296.3303

sonny.odrobinak@tricommercial.com

LIC: #00632311



www.tricommercial.com

6600 LONE TREE WAY

RARE LARGE MEDICAL SPACE,
BRENTWOOD, CA



Edward F. Del Beccaro
925.296.3333
ed.delbeccaro@tricommercial.com
LIC: #00642167

Sonny O'Drobinak
925.296.3303
sonny.odrobinak@tricommercial.com
LIC: #00632311