

EXCELLENT STREET FRONTAGE NOW AVAILABLE

±6,573 SQ. FT. R&D / FLEX-TECH. / CORP. HEADQUARTERS

3506-B LAKE CENTER DRIVE | SANTA ANA, CA

**EXCELLENT
CORPORATE
HEADQUARTERS**



PROPERTY FEATURES

- ±6,573 Sq. Ft. R&D/Flex-Tech/Corp. Headquarters
- Central South Coast Metro Area Location
- Immediate Access To 405 (San Diego) Freeway
- Minutes To Orange County Airport
- Very High Image Building
- Heavy Use Of Exterior/Interior Glass
- Deluxe Offices Throughout
- One (1) Ground Level Door
- 400 Amp - 277/480 Volts Power
- 21' Warehouse Clearance
- Fully Fire Sprinklered



For more information, please contact:



TIM ARGUELLO
Senior Vice President/Principal
(949) 724-4750
targuello@lee-associates.com
Lic.# 01055859



MATTHEW ARGUELLO
Executive Assistant
714.215-0363
assist4timarguello@lee-associates.com

LEE & ASSOCIATES
COMMERCIAL REAL ESTATE SERVICES
NEWPORT BEACH

LEE & ASSOCIATES® - NEWPORT BEACH | Corporate ID#01197433
100 Bayview Circle, Suite 600, Newport Beach, California 92660
☎ 949.724.1000 | 📠 949.862.9048 | www.lee-associates.com

DISCLAIMER: The information contained herein has been obtained from the property owner or other third party and is provided to you without verification as to accuracy. We (Lee & Associates, its brokers, employees, agents, principals, officers, directors and affiliates) make no warranty or representation regarding the information, property, or transaction. You and your attorneys, advisors and consultants should conduct your own investigation of the property and transaction.

EXCELLENT STREET FRONTAGE NOW AVAILABLE

±6,573 SQ. FT. R&D / FLEX-TECH. / CORP. HEADQUARTERS

3506-B LAKE CENTER DRIVE | SANTA ANA, CA

For more information, please contact:

TIM ARGUELLO

Senior Vice President/Principal

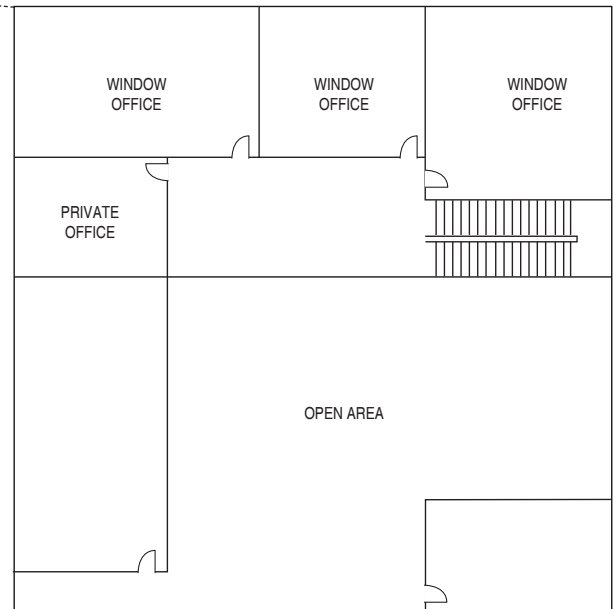
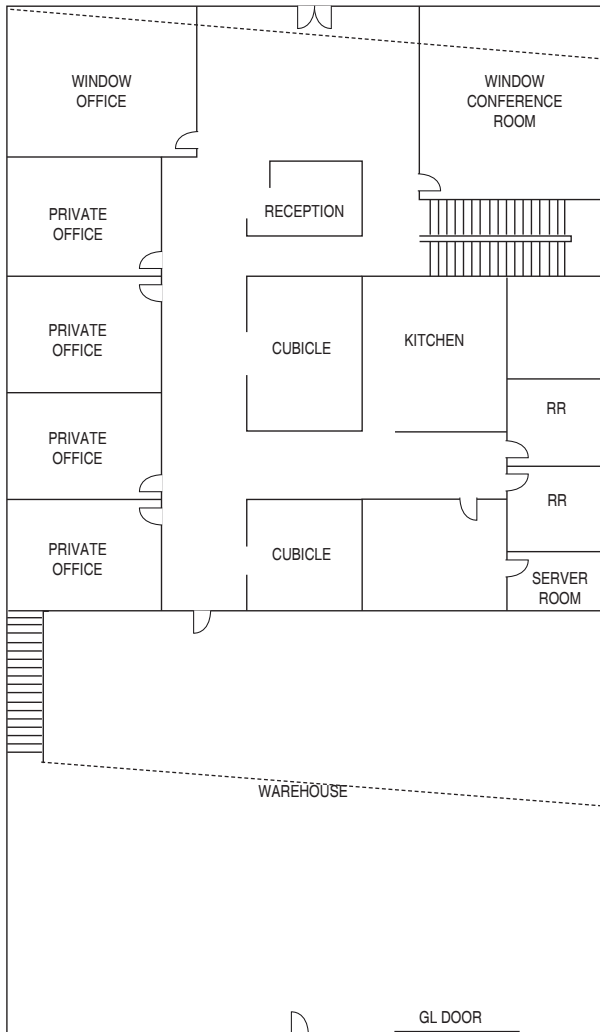
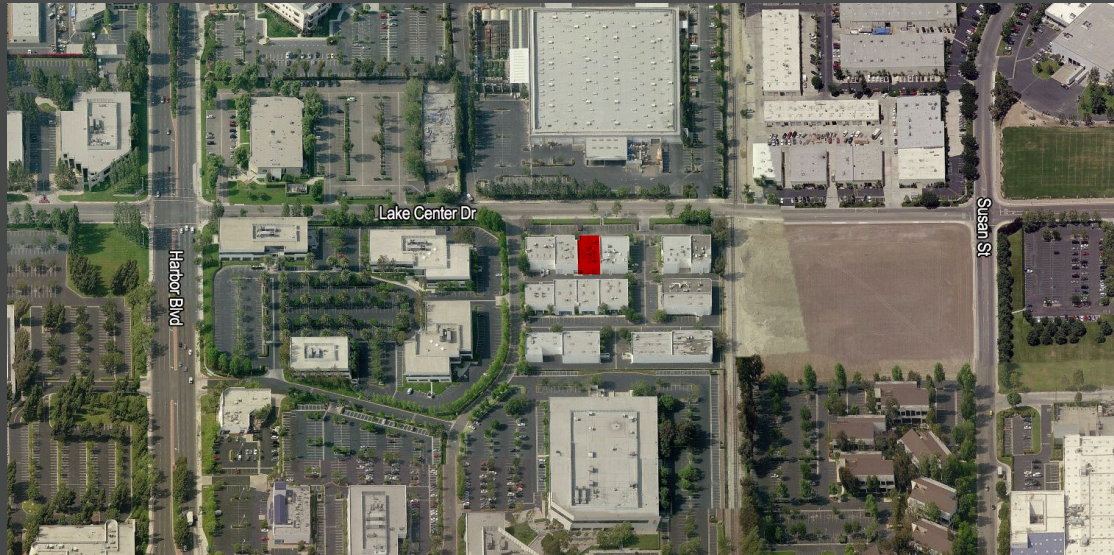
(949) 724-4750

targuello@lee-associates.com

BRE# 01055859



COMMERCIAL REAL ESTATE SERVICES
NEWPORT BEACH



NOT TO SCALE. NOT AS BUILT.

For more information, please contact:



TIM ARGUELLO
Senior Vice President/Principal
(949) 724-4750
targuello@lee-associates.com
Lic.# 01055859



MATTHEW ARGUELLO
Executive Assistant
714.215-0363
assist4timarguello@lee-associates.com

LEE & ASSOCIATES® - NEWPORT BEACH | Corporate ID#01197433
100 Bayview Circle, Suite 600, Newport Beach, California 92660
☎ 949.724.1000 | 📠 949.862.9048 | www.lee-associates.com

DISCLAIMER: The information contained herein has been obtained from the property owner or other third party and is provided to you without verification as to accuracy. We (Lee & Associates, its brokers, employees, agents, principals, officers, directors and affiliates) make no warranty or representation regarding the information, property, or transaction. You and your attorneys, advisors and consultants should conduct your own investigation of the property and transaction.