



285 HUDSON

New Development

HUDSON SQUARE | NEW YORK

Southwest Corner of Spring Street

RETAIL SPACE
AVAILABLE
FOR LEASE

 LEE &
ASSOCIATES

SPACE DESCRIPTION

Size

Ground Floor _____ 1,305 SF

Mezzanine _____ 435 SF

Lower Level _____ 594 SF

Frontage

Hudson Street _____ 48 feet

Spring Street _____ 20 feet

Possession _____ Q3 2026

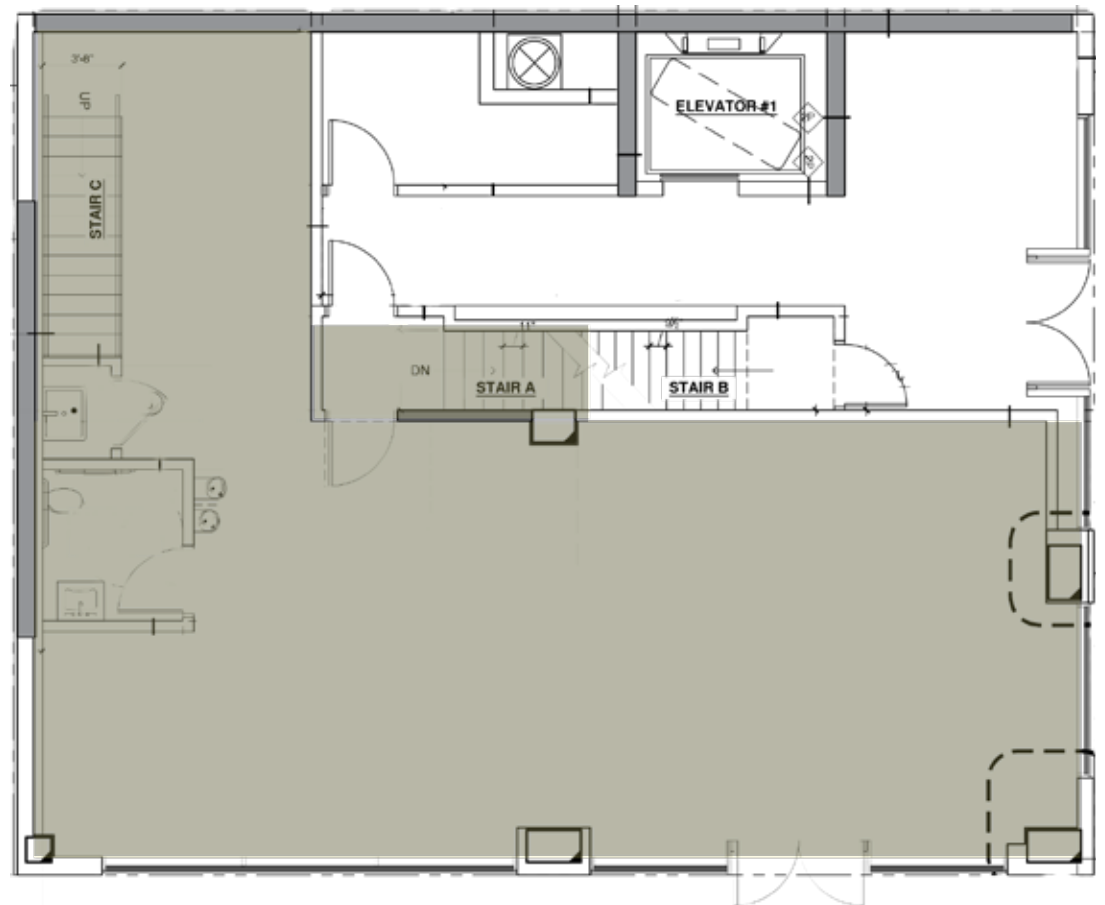
Delivery Condition

- White-Box
- Black-Iron Venting
- Gas & Waste lines stubbed
- HVAC
- Grease Trap

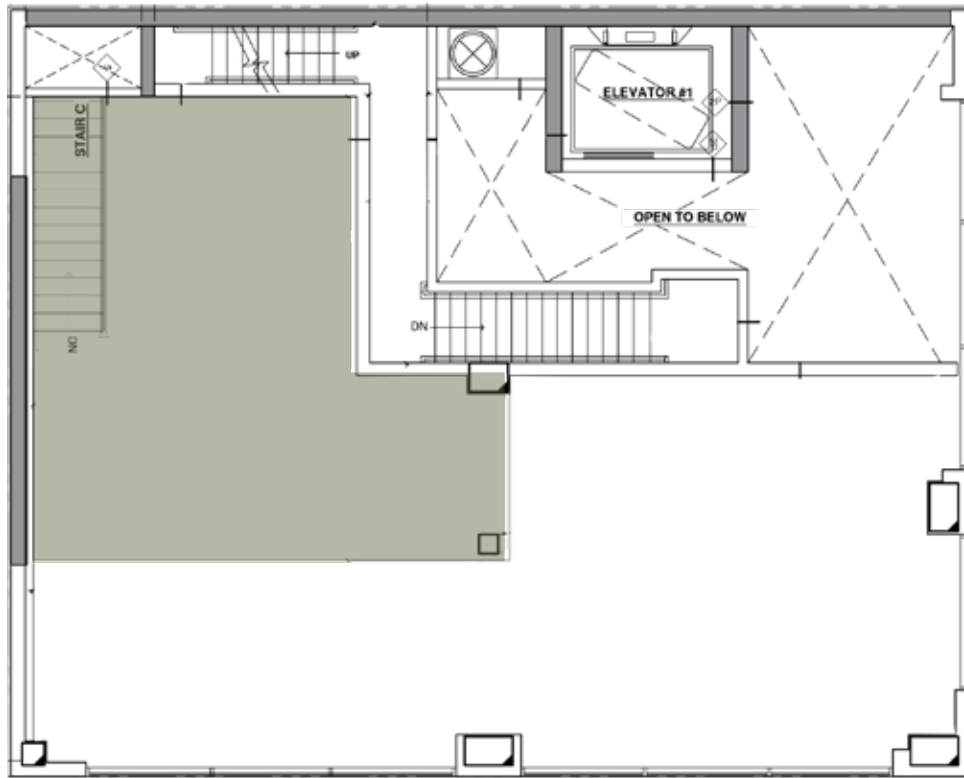
Comments

- Across the street from Disney's 1.2M SF HQ, 7 Hudson Sq - 5,000 employees
- Down the street from Google's 1.3M SF St John's Terminal - 3,000 employees

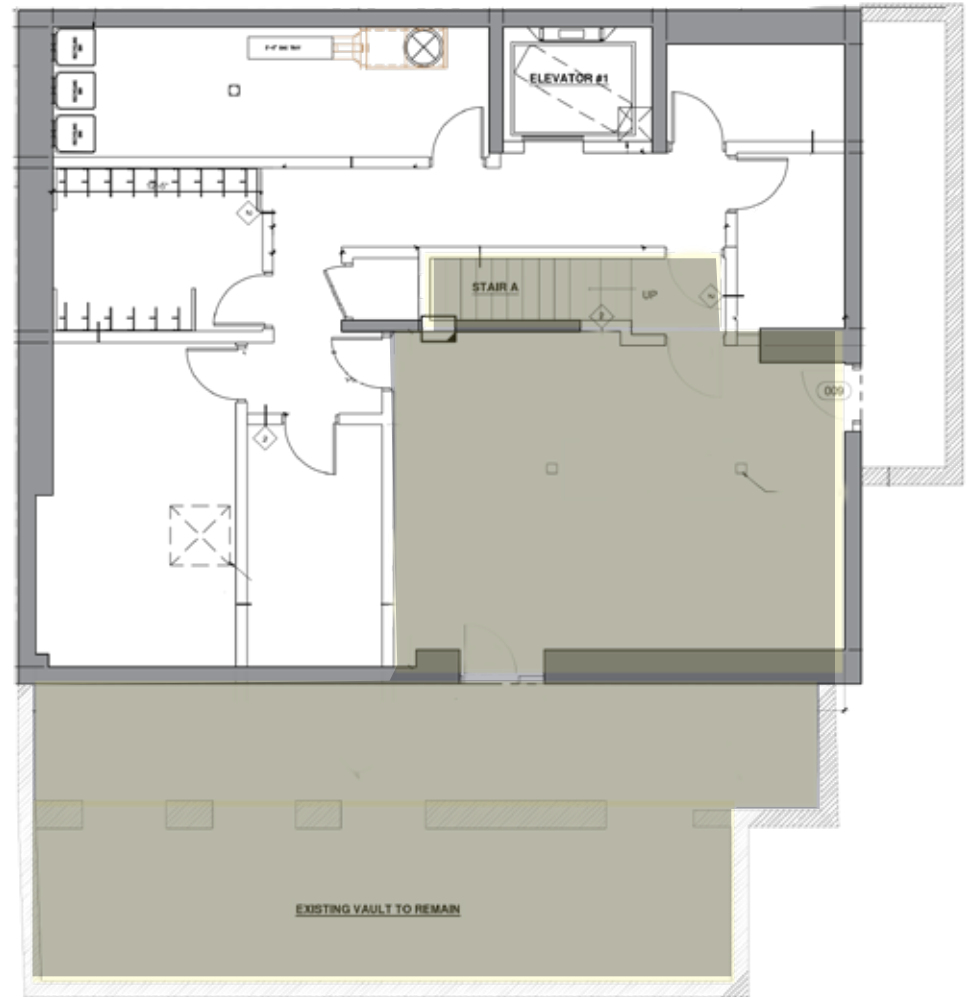
GROUND FLOOR



MEZZANINE



LOWER LEVEL





MORRIS DWECK
 Managing Director
 212.776.1246
 mdweck@lee-associates.com

ANNIE SQUIER
 Director
 646.723.4719
 asquier@lee-associates.com

All information supplied is from sources deemed reliable and is furnished subject to errors, omissions, modifications, removal of the listing for sale or lease, and to any listing conditions, including the rates and manner of payment of commissions for particular offerings imposed by principals or agreed by this Company, the terms of which are available to principals or duly licensed brokers. Any square footage dimensions set forth are approximate.

