

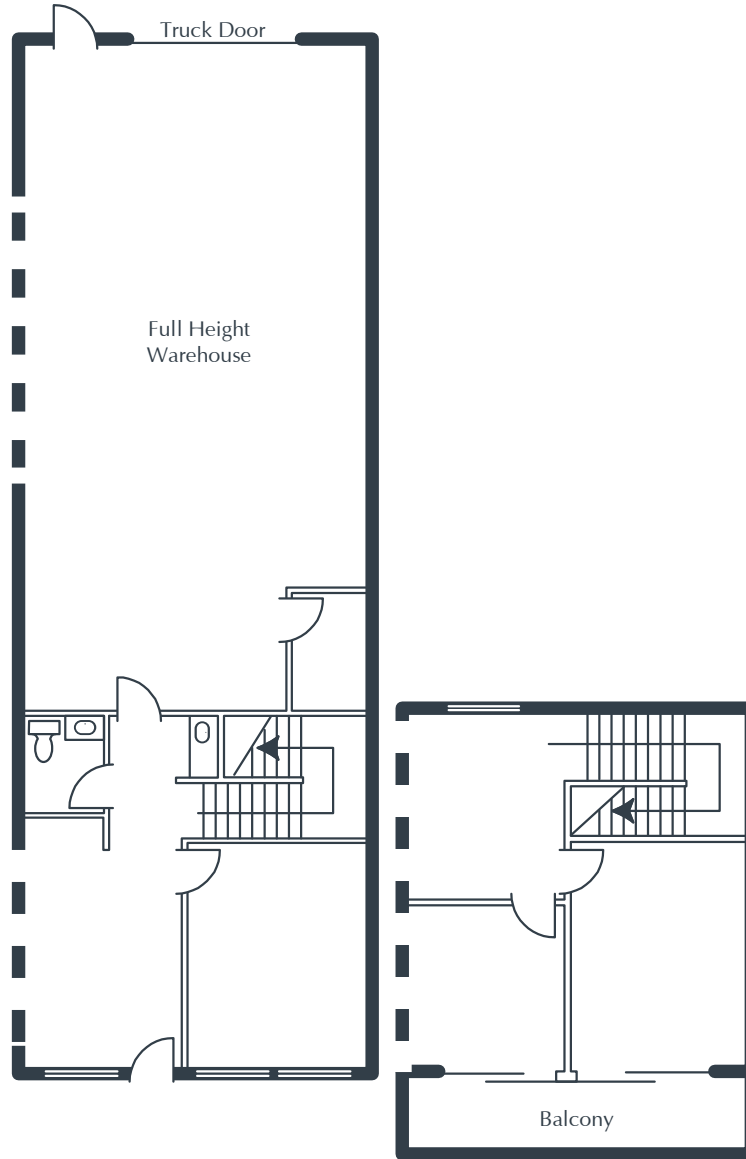
JAMBOREE BUSINESS CENTER

2691 Richter Avenue, Suite 117
Irvine, CA

2,156 Square Feet

\$1.79 SF/MO

Triple Net



NOTES

- Reception
- 3 Window Offices
- Restroom
- Coffee Bar
- Storage Room
- Ground-Level Truck Door
- Approximately 984 sq. ft. of Full-Height Warehouse
- Part of a Professionally Managed Business Park

Created by Olen Commercial Realty Corp., 2022.
Information is not to be published or copied without
written approval. Square footage and floor plans are
estimates and should be separately verified. All rates,
terms, floor plans, and building facts are subject to
change without notice.

ea 02.26.2026

MARIA MEYER

Senior Leasing Director
949.719.7215
mmeyer@olen.com



Seven Corporate Plaza
Newport Beach, CA
949.644.6536
www.olen.com