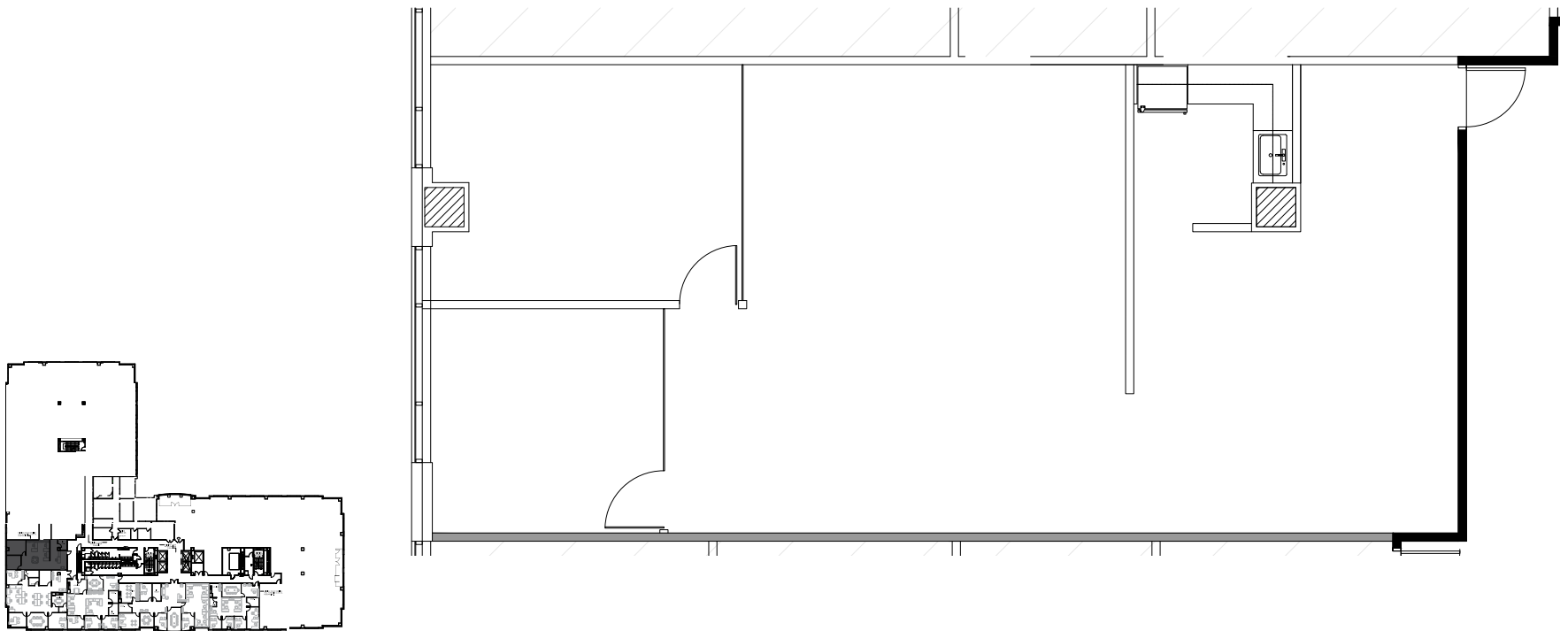


SPEC SUITE 370 — 1,516 SF



DORAL CONCOURSE

8400 NW 36TH ST. DORAL, FL 33166



LEASING

TERE BLANCA | 305.577.8851  
tere.blanca@blancacre.com

GRANT GASSMAN | 305.319.0127  
grant.gassman@blancacre.com



BLANCA COMMERCIAL REAL ESTATE, INC.  
LICENSED REAL ESTATE BROKER | BLANCACRE.COM